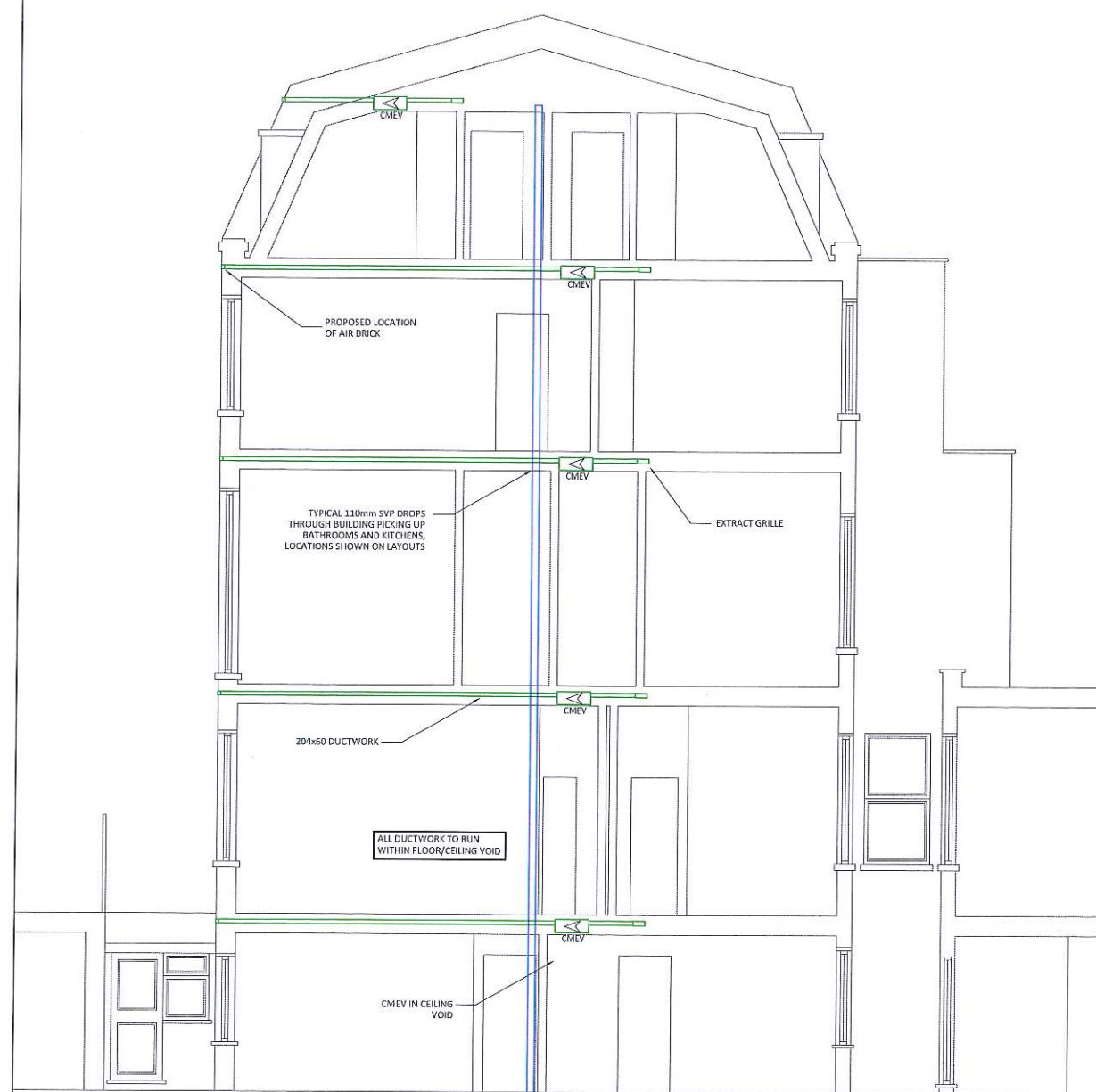
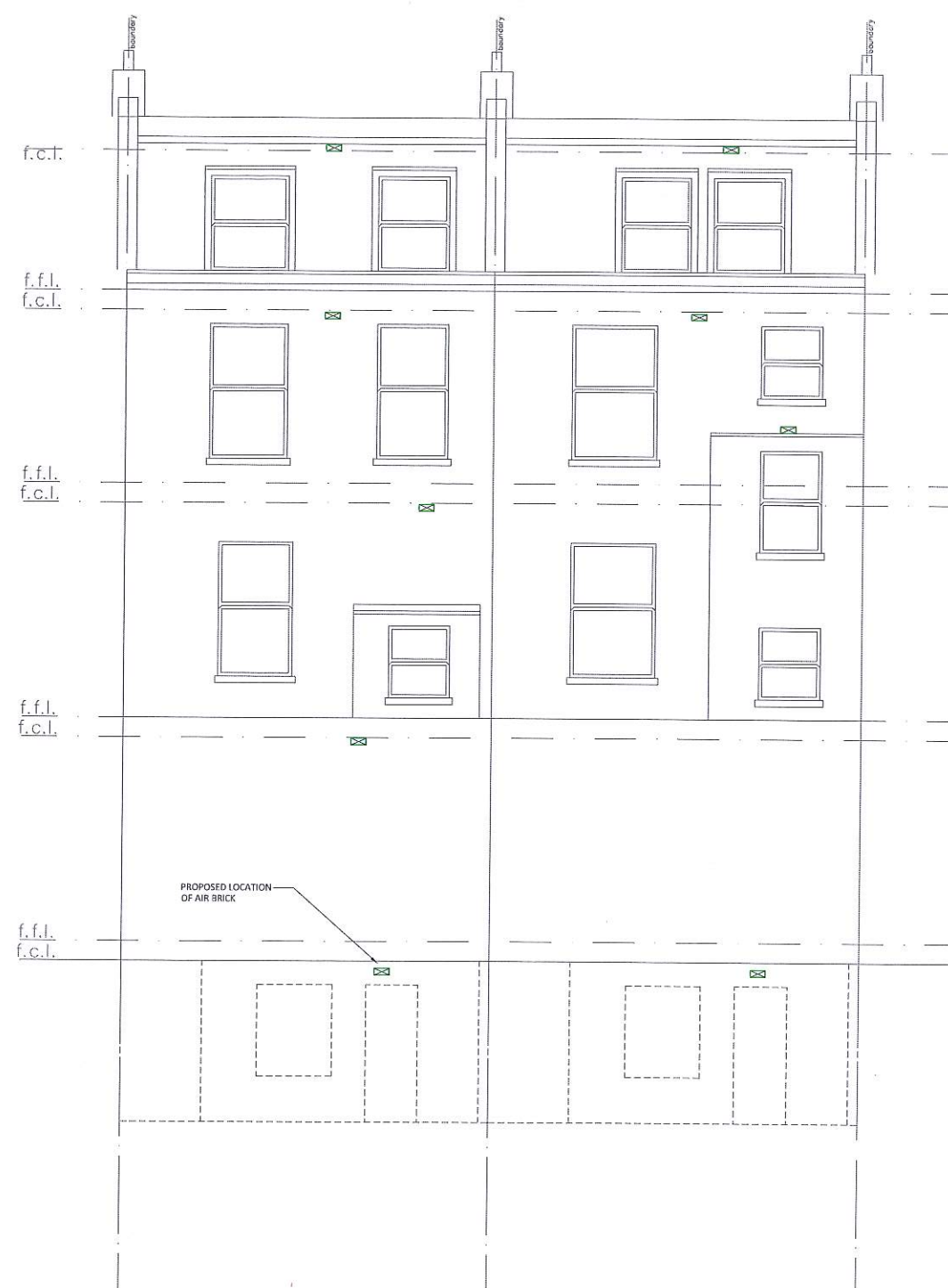


Rev	Date	By	Description
P1	11.08.18	JSO	Preliminary Issue
P2	29.08.18	JSO	Preliminary Issue



SECTION AA - 109 GUILFORD STREET



PROPOSED REAR
ELEVATION



1. DO NOT SCALE FROM THIS DRAWING. ALL DIMENSIONS ARE NOMINAL AND MUST BE CHECKED ON SITE.
2. TO BE READ IN CONJUNCTION WITH ARCHITECTS AND ENGINEERING DRAWINGS, SPECIFICATIONS & SCHEDULES.
3. THESE DRAWINGS ARE FOR INITIAL INFORMATION ONLY AND ARE SUBJECT TO CHANGE DURING FINAL DESIGN STAGE.
4. THESE DRAWINGS ARE COPYRIGHT OF OAKLEY M&E. PLEASE OBTAIN PERMISSION BEFORE COPYING. THESE DRAWINGS MUST NOT BE MODIFIED OTHER THAN BY OAKLEY M&E.



99 Wey Hill, Haslemere, Surrey, GU27 1HT
Email Us - info@oakleymed.co.uk
Visit Us - www.oakleymed.co.uk
Call Us - 01403 785426

Client:
Oceanic Jewellers

Project:
109 & 110 Guilford Street
London

Title:
Mechanical Services
Extract Ventilation & SVP Layout
Elevation and Typical Section

Date:	10.08.2018	Drawn:	HH	Checked:	JSO	Scale @ A1:	1:50
Xref:	Xref GuilfordSt-10-08-2018						
Drawing Status:	Preliminary						
Drawing Number:	P1110-M-102						Rev:
							P2