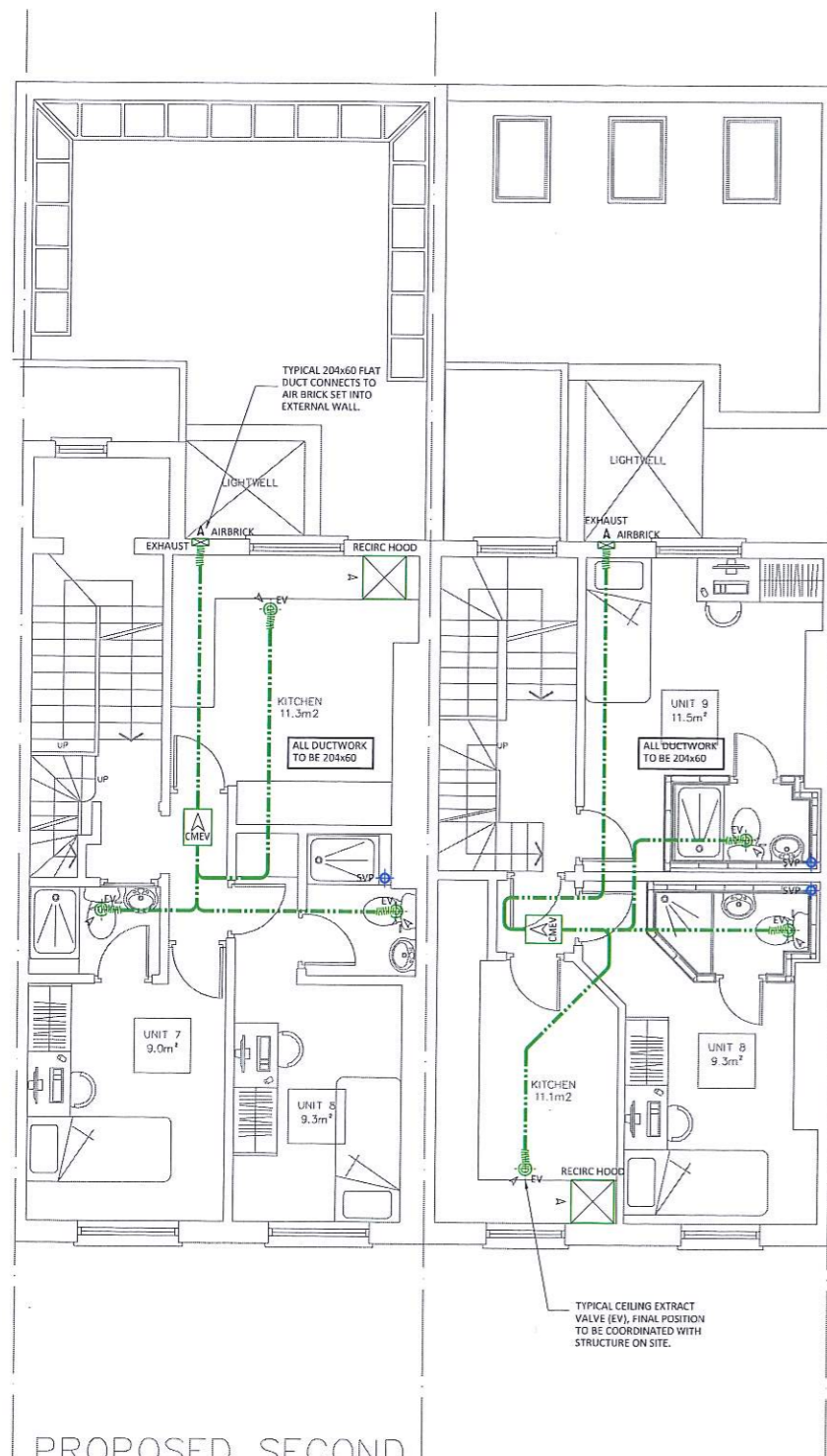
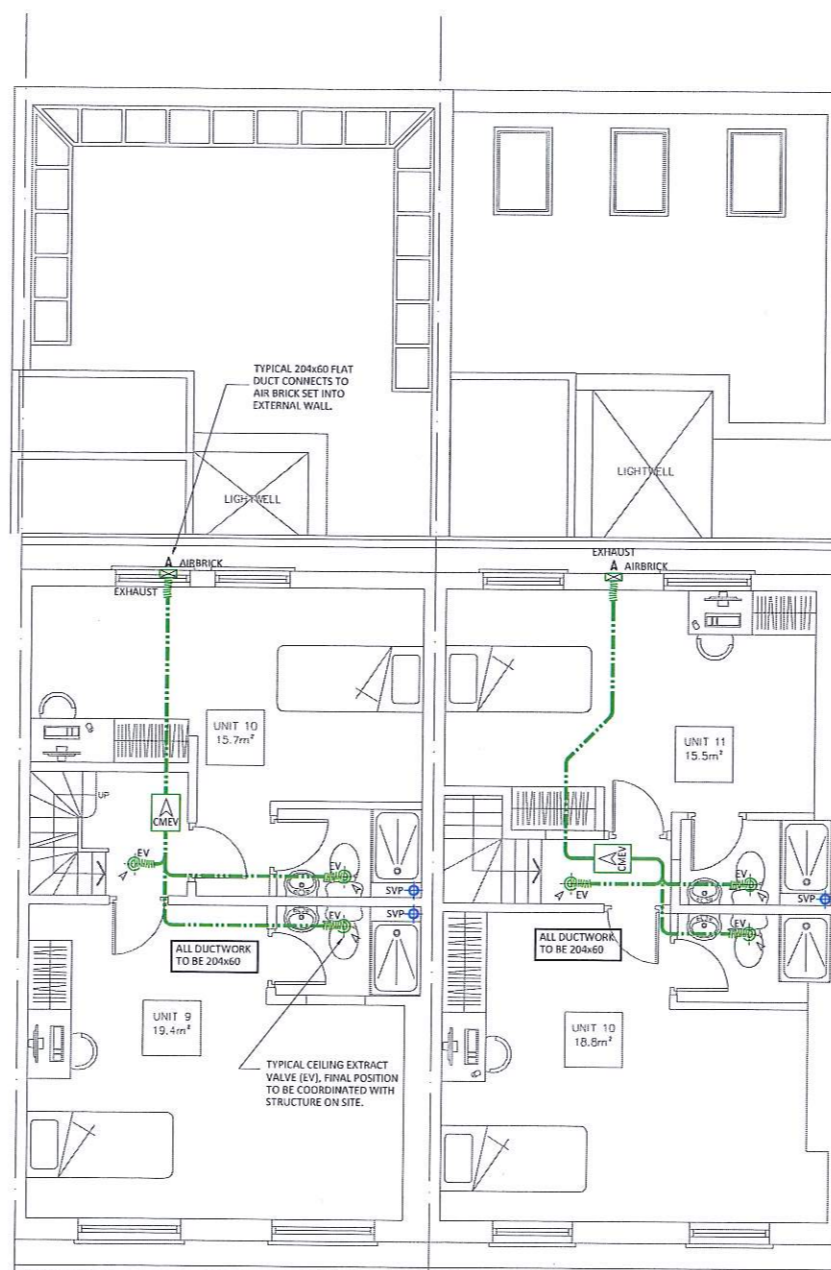


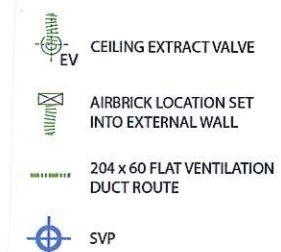
Rev	Date	By	Description
P1	11.08.18	JSO	Preliminary Issue
P2	29.08.18	JSO	Preliminary Issue



PROPOSED SECOND FLOOR PLAN



PROPOSED THIRD FLOOR PLAN



- DO NOT SCALE FROM THIS DRAWING. ALL DIMENSIONS ARE NOMINAL AND MUST BE CHECKED ON SITE.
- TO BE READ IN CONJUNCTION WITH ARCHITECTS AND ENGINEERING DRAWINGS, SPECIFICATIONS & SCHEDULES.
- THESE DRAWINGS ARE FOR INITIAL INFORMATION ONLY AND ARE SUBJECT TO CHANGE DURING FINAL DESIGN STAGE.
- THESE DRAWINGS ARE COPYRIGHT OF OAKLEY M&E. PLEASE OBTAIN PERMISSION BEFORE COPYING. THESE DRAWINGS MUST NOT BE MODIFIED OTHER THAN BY OAKLEY M&E.



99 Wey Hill, Haslemere, Surrey, GU27 1HT
 Email Us - info@oakleymed.co.uk
 Visit Us - www.oakleymed.co.uk
 Call Us - 01403 785426

Client:
 Oceanic Jewellers

Project:
 109 & 110 Guilford Street
 London

Title:
 Mechanical Services
 Extract Ventilation & SVP Layout
 Second & Third Floor

Date: 10.08.2018 Drawn: HH Checked: JSO Scale @ A1: 1:50

Xref:
 Xref-GuilfordSt-10-08-2018

Drawing Status:
 Preliminary

Drawing Number: P1110-M-101 Rev: P2