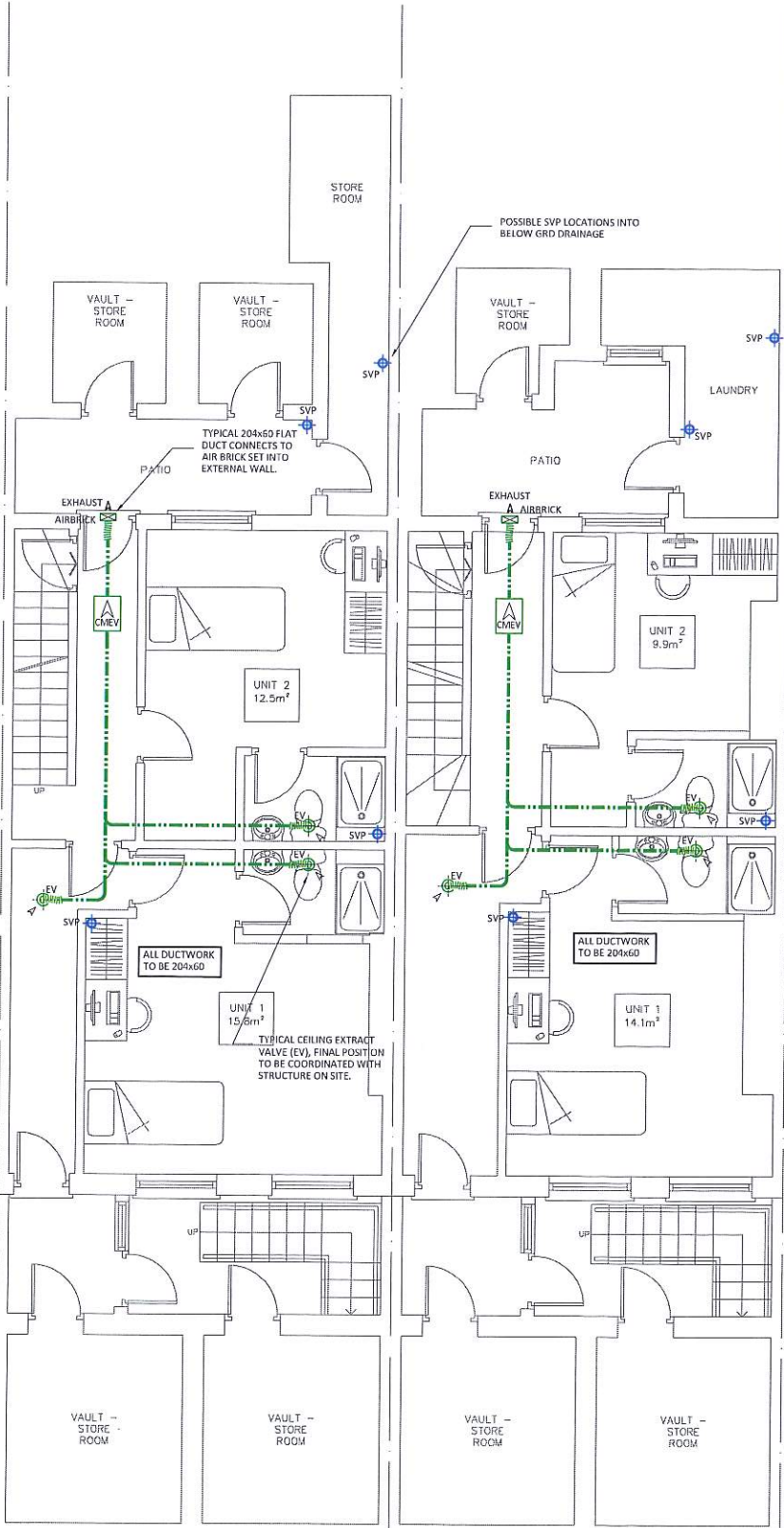
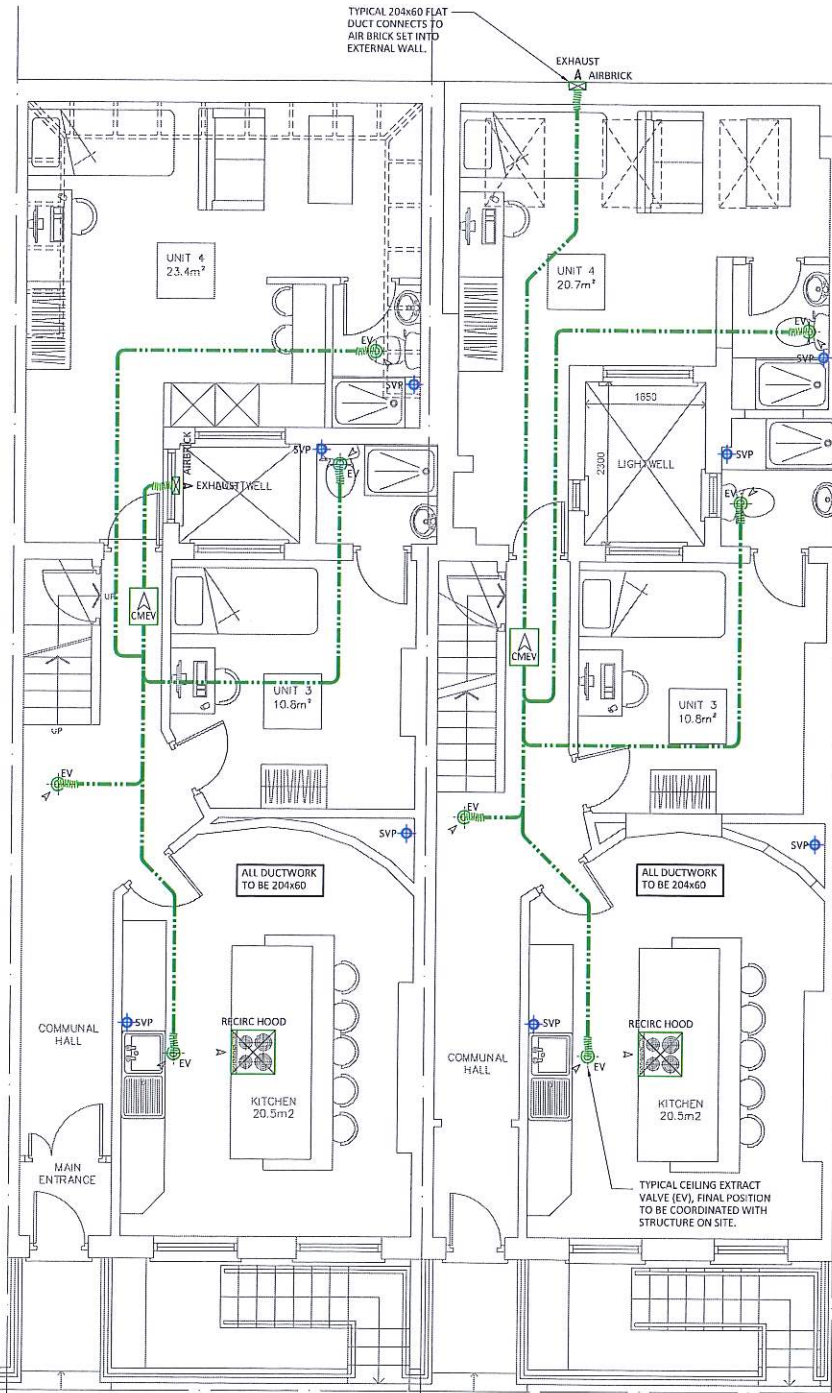


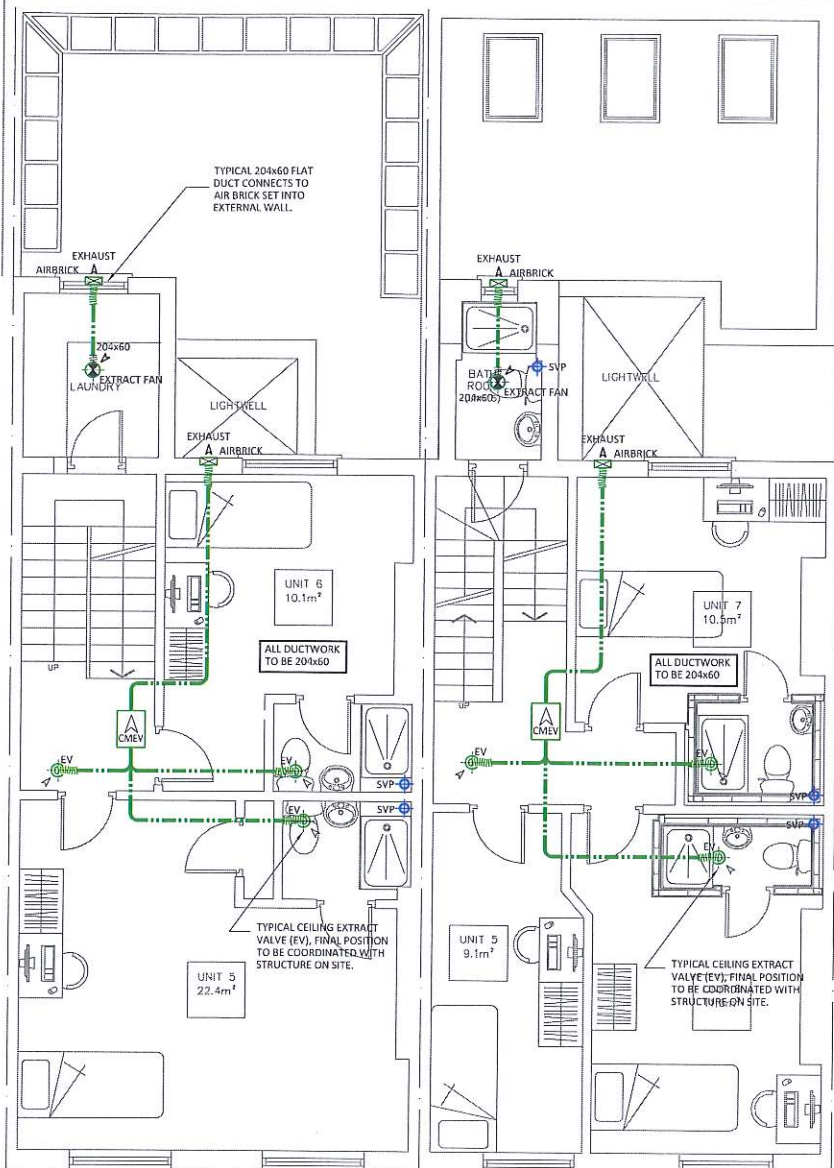
| Rev | Date | By | Description |
|-----|----------|-----|-------------------|
| P1 | 11.08.18 | JSO | Preliminary Issue |
| P2 | 29.08.18 | JSO | Preliminary Issue |
| | | | |







PROPOSED BASEMENT FLOOR PLAN



PROPOSED GROUND FLOOR PLAN



PROPOSED FIRST FLOOR PLAN

-  CEILING EXTRACT VALVE
-  AIRBRICK LOCATION SET INTO EXTERNAL WALL
-  204 x 60 FLAT VENTILATION DUCT ROUTE
-  SVP

- DO NOT SCALE FROM THIS DRAWING. ALL DIMENSIONS ARE NOMINAL AND MUST BE CHECKED ON SITE.
- TO BE READ IN CONJUNCTION WITH ARCHITECTS AND ENGINEERING DRAWINGS, SPECIFICATIONS & SCHEDULES.
- THESE DRAWINGS ARE FOR INITIAL INFORMATION ONLY AND ARE SUBJECT TO CHANGE DURING FINAL DESIGN STAGE.
- THESE DRAWINGS ARE COPYRIGHT OF OAKLEY M&E. PLEASE OBTAIN PERMISSION BEFORE COPYING. THESE DRAWINGS MUST NOT BE MODIFIED OTHER THAN BY OAKLEY M&E.

Oakley M&E DESIGN

99 Wey Hill, Haslemere, Surrey, GU27 1HT
 Email Us - info@oakleymed.co.uk
 Visit Us - www.oakleymed.co.uk
 Call Us - 01403 785426

Client:
Oceanic Jewellers

Project:
109 & 110 Guilford Street
London

Title:
Mechanical Services
Extract Ventilation & SVP Layout
Basement, Ground & First Floor

| | | | |
|-------------------------------------|--------------------------------|-----------------|---------------------|
| Date: 10.08.2018 | Drawn: HH | Checked: JSO | Scale @ A1: 1:50 |
| Xref: Xref-GuilfordSt-10-08-2018 | Drawing Status: Preliminary | | |
| Drawing Number: P1110-M-100 | Rev: P2 | | |