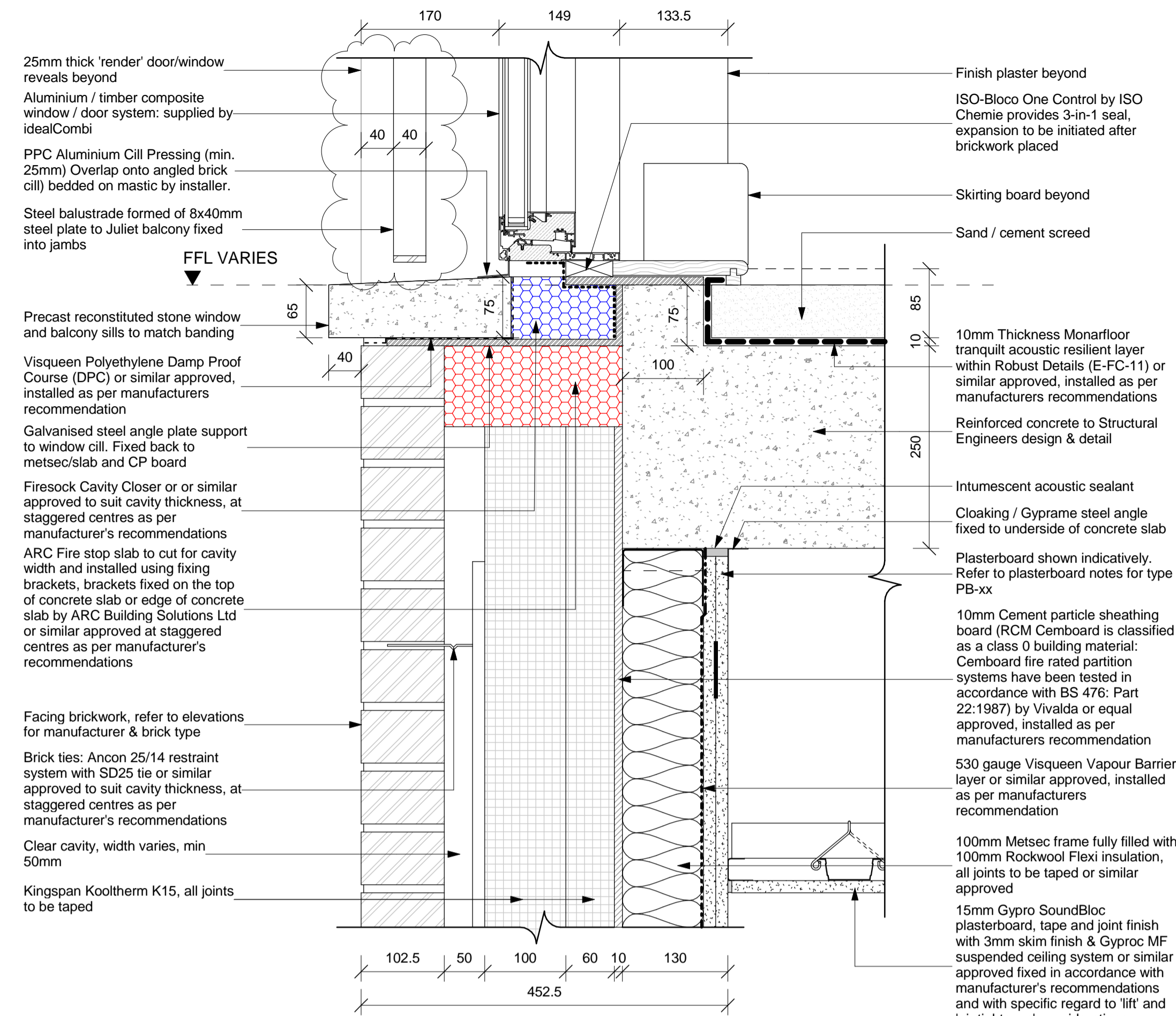
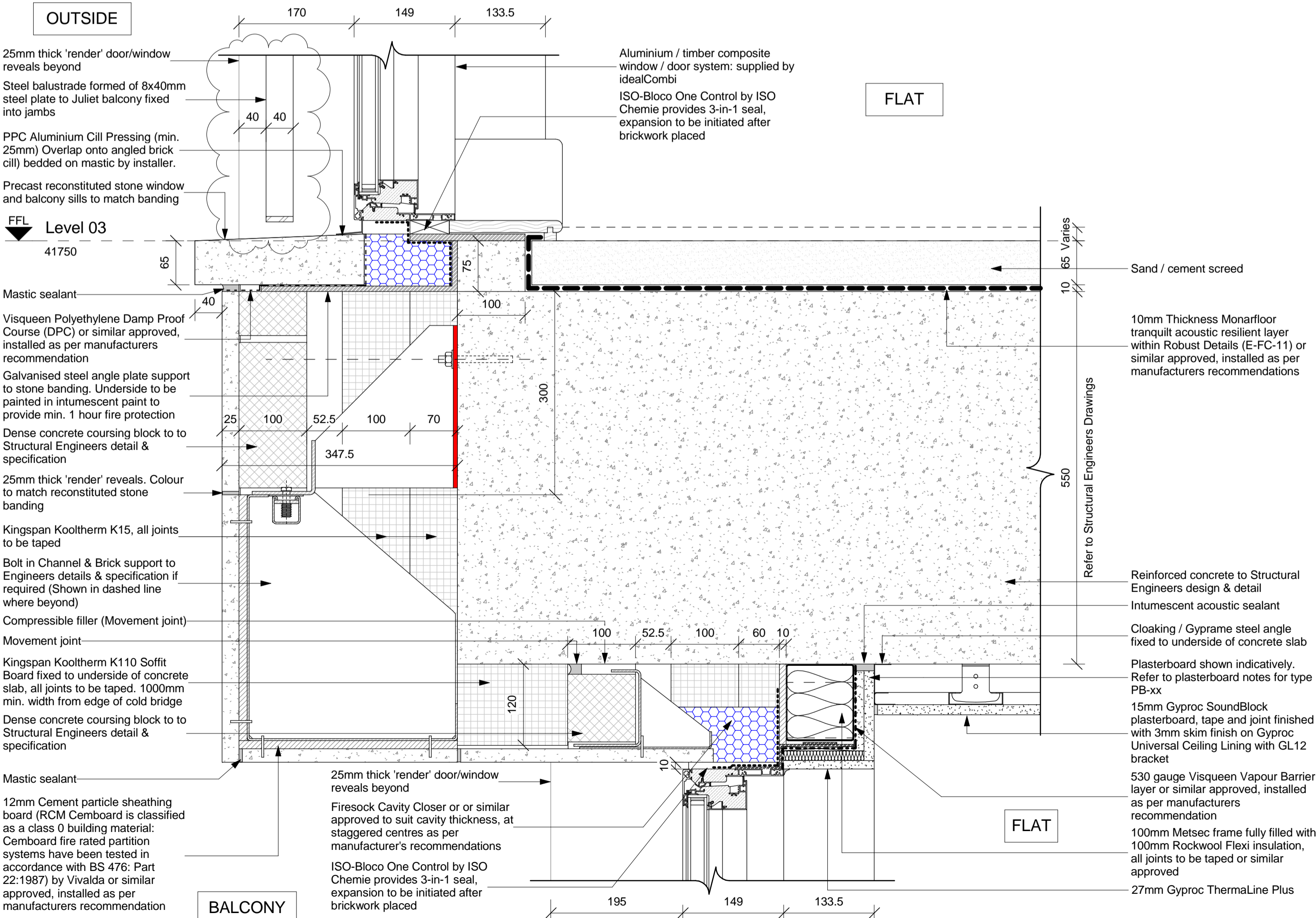


1 Typical Flat Window Head, Cill and Slab Detail
16.02 1:5



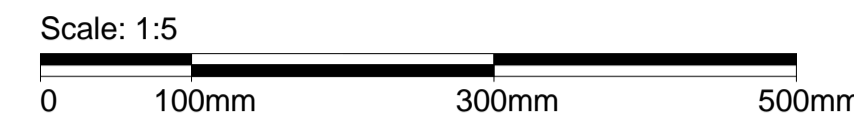
2 Typical Juliet Balcony Opening with Balustrade
16.03 1:5



3 External Window, Wall and Tapered GRC Soffit Detail
16.03 1:5

All dimensions to be verified on site by Main Contractor before the start of any shop drawings or work whatsoever either on their own behalf or that of sub-contractors.
Report any discrepancies to the Contract Administrator at once.
This drawing is to be read with all relevant Architect's and Engineer's drawings and other relevant information.
© Ingleton Wood LLP

LEGEND: DO NOT SCALE



Rev	Date	Description	Chk	Apr
F	27.07.18	Balustrade Amended	ET	JR
E	06.03.18	Cill Overhang and Window Reveal Amended	ET	JR
D	31.01.18	Wall bulging amended as per Lovell request, MSA and Firestop slab amended	ET	JR
C	06.12.17	Construction Issue	ET	JR
B	10.11.17	Reveal Depth amended to suit Lovell comments	ET	JR
A	30.06.17	First Issue	ET	JR

Scale @ A1: 1:5
Issuing Office: London
Project No: 84923

Status: S4
Purpose of Issue: For Construction

Ingleton Wood
Vision, form and function
London
1 Alle Street
London E1 8DE
T: 020 7680 4400
www.ingletonwood.co.uk

Billericay Cambridge Colchester London Norwich

Project: Regents Park Estate
Dick Collins Hall

Drawing Title: External Window & Door Details

Clien: Lovell Partnership Ltd.