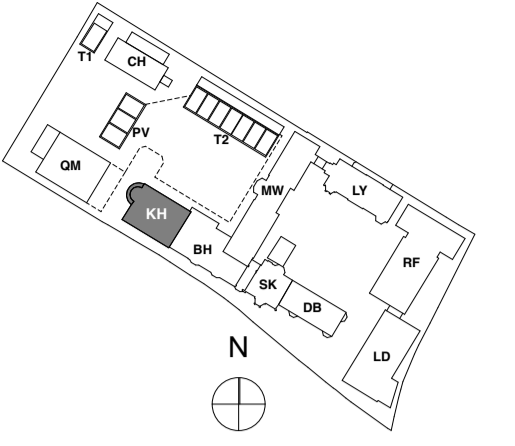


Contractors must check all dimensions on site. Only figured dimensions are to be worked from. Discrepancies must be reported to the Architect before proceeding. © This Drawing is Copyright



KEY PLAN

NOTE: ALL INFORMATION SHOWN ON THIS DRAWING IS SUBJECT TO DESIGN DEVELOPMENT BY SPECIALIST

- GENERAL KEY
- ① LIGHT STAINED OAK FINISH
 - ② DARK STAINED OAK FINISH
 - (M) MIRROR
 - (V) FCU VENTS
- (LED) INCORPORATED LED STRIP LIGHTING
 TO UNDERSIDE OF SHELVING/HANGING RAILS

Additional Info:
 MFC Carcass with veneer external panels
 Internal Joinery Carcass in laminate Finish
 Door Handles to be Routed into doors/panels
 Hanging rails LED to be sensor operated

Integrated Vanity Units with Mirrors are subject to Interior Designer input.
Drawings to be read in conjunction with Finishes Schedule
Drawings show design intent only and should be developed further by specialist.
 All dims to be checked and confirmed on site prior manufacture.

Fan-coil enclosure drawings to be read in conjunction with drwg no: 08KH-DE008

TENDER

REVISION	DRN	CHKD	DATE
T1	K/C	KC	20/12/2018



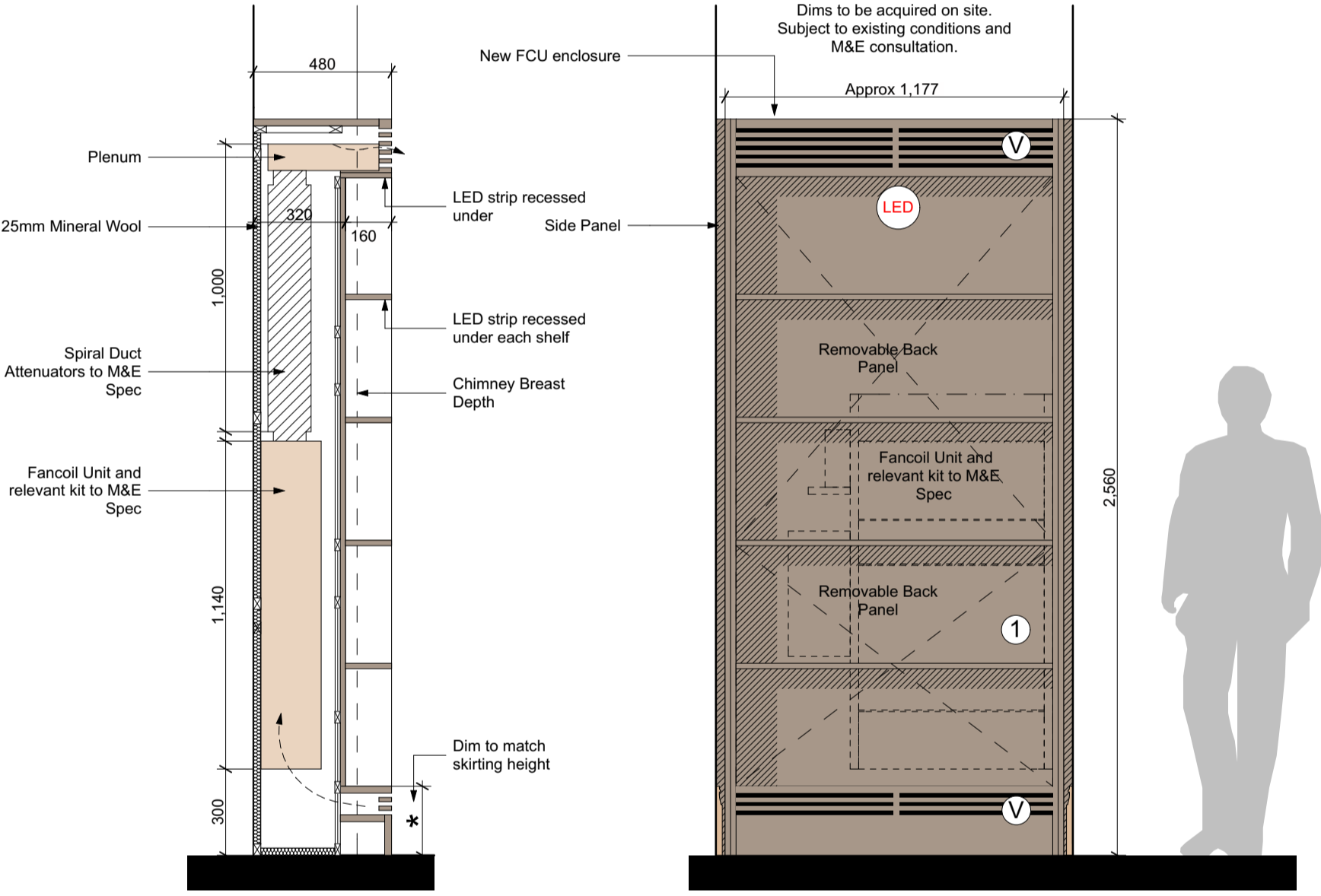
CLIENT
 MOUNT ANVIL LTD

PROJECT
 KIDDERPORE AVENUE

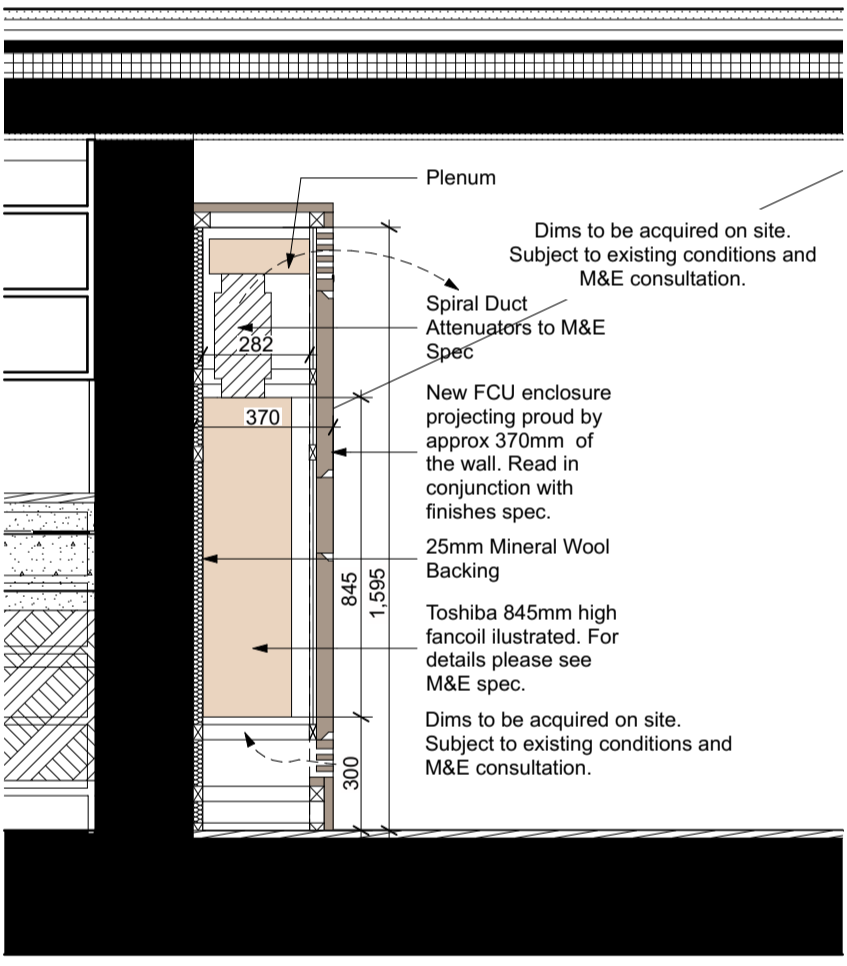
DRAWING
 Kidderpore Hall
 KH-01 Joinery Sheet 7

SCALE 1:20, 1:200, 1:22 @ A1 DATE 20/12/2018

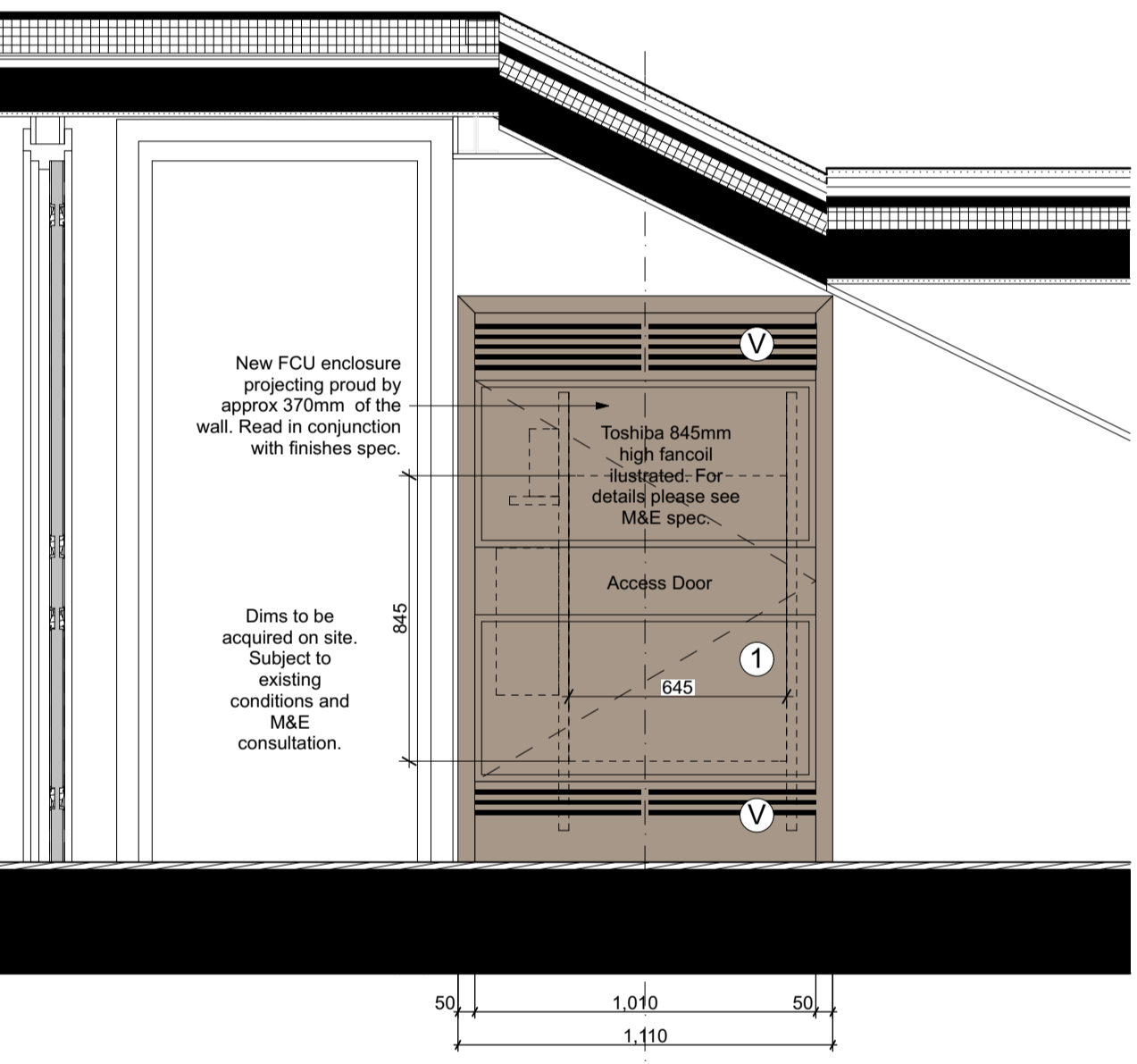
DRAWING No. 15 230
 9000-DRG-08KH- DE016
 DRAWN BY K/C
 REV T1
A & Q PARTNERSHIP (LONDON) LTD
 THE LUX BUILDING, 2-4 HOXTON SQUARE, LONDON N1 6 NU
 Tel: 020 7613 2244 Fax: 020 7613 2642 Email: london@aqp.co.uk
 ARCHITECTURE DESIGN MASTERPLANNING INTERIORS



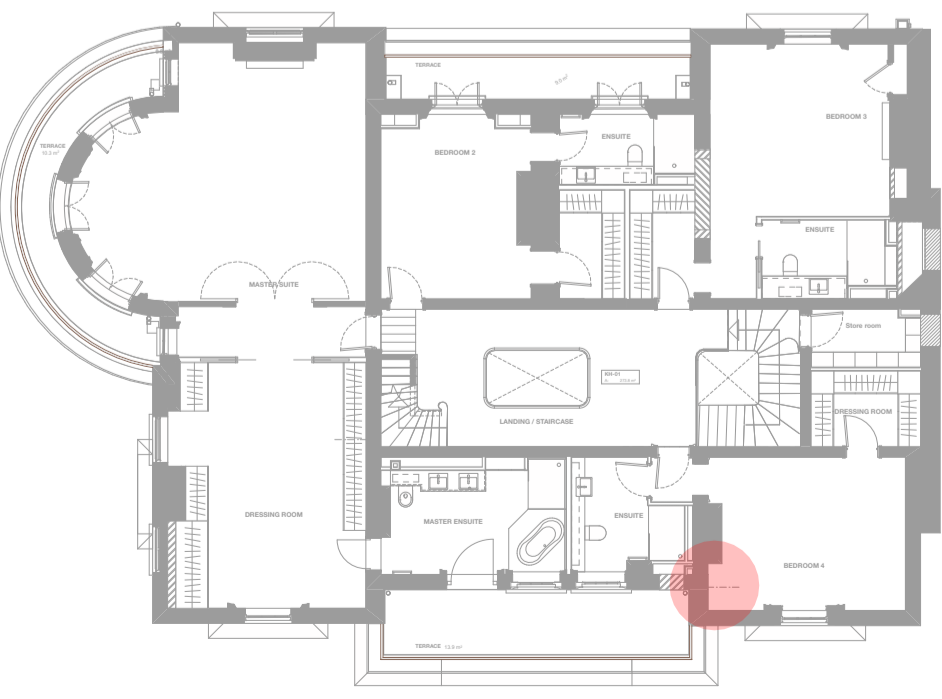
S01 - Level LG Typical FCU Enclosure Section 1:20@A1 E01 - Level LG Typical FCU Enclosure Elevation 1:20@A1



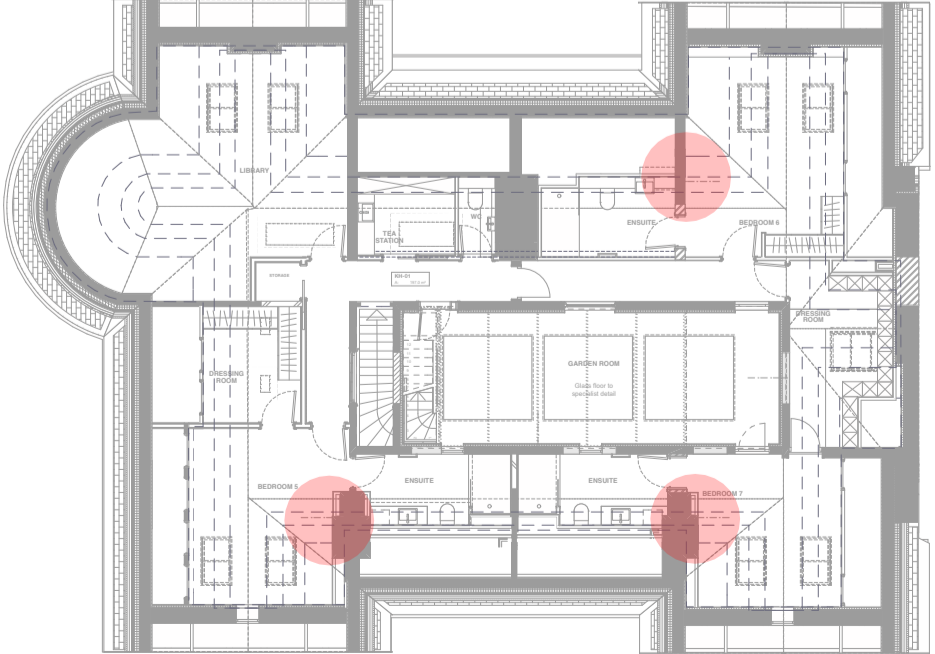
S02 - Level 02 Typical FCU Enclosure Section 1:20@A1



E02 - Level 02 Typical FCU Enclosure Elevation 1:20@A1



Kidderpore Hall - First Floor Key



Kidderpore Hall - Second Floor Key