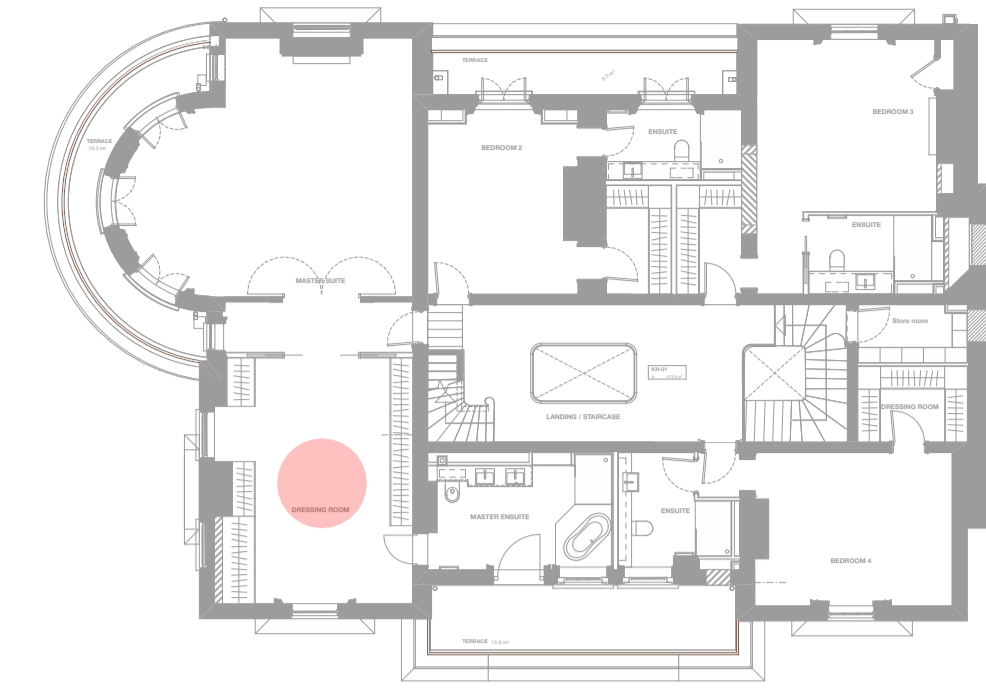


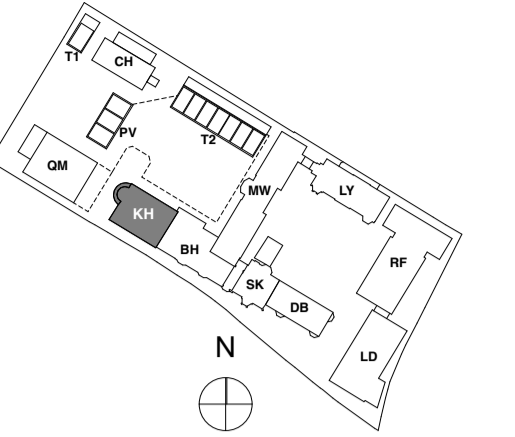


P01 - Level 01 Master Bedroom Wardrobe Plan
1:20@A1



Kidderpore Hall - First Floor Key

DIMENSION AT ORIGINAL SHEET SIZE
Contractors must check all dimensions on site. Only figured dimensions are to be worked from. Discrepancies must be reported to the Architect before proceeding. © This drawing is Copyright



KEY PLAN
NOTE:
ALL INFORMATION SHOWN ON THIS DRAWING IS SUBJECT TO DESIGN DEVELOPMENT BY SPECIALIST

- GENERAL KEY**
- ① LIGHT STAINED OAK FINISH
 - ② DARK STAINED OAK FINISH
 - (M) MIRROR
 - (V) FCU VENTS
 - (LED) INCORPORATED LED STRIP LIGHTING TO UNDERSIDE OF SHELVING/HANGING RAILS

Additional Info:
MFC Carcass with veneer external panels
Internal Joinery Carcass in laminate Finish
Door Handles to be Routed into doors/panels
Hanging rails LED to be sensor operated

Integrated Vanity Units with Mirrors are subject to Interior Designer input.

Drawings to be read in conjunction with Finishes Schedule
Drawings show design intent only and should be developed further by specialist.
All dims to be checked and confirmed on site prior manufacture.

TENDER

REVISION	DRN	CHKD	DATE
T1 First Issue	K/C	K/C	20/12/2018



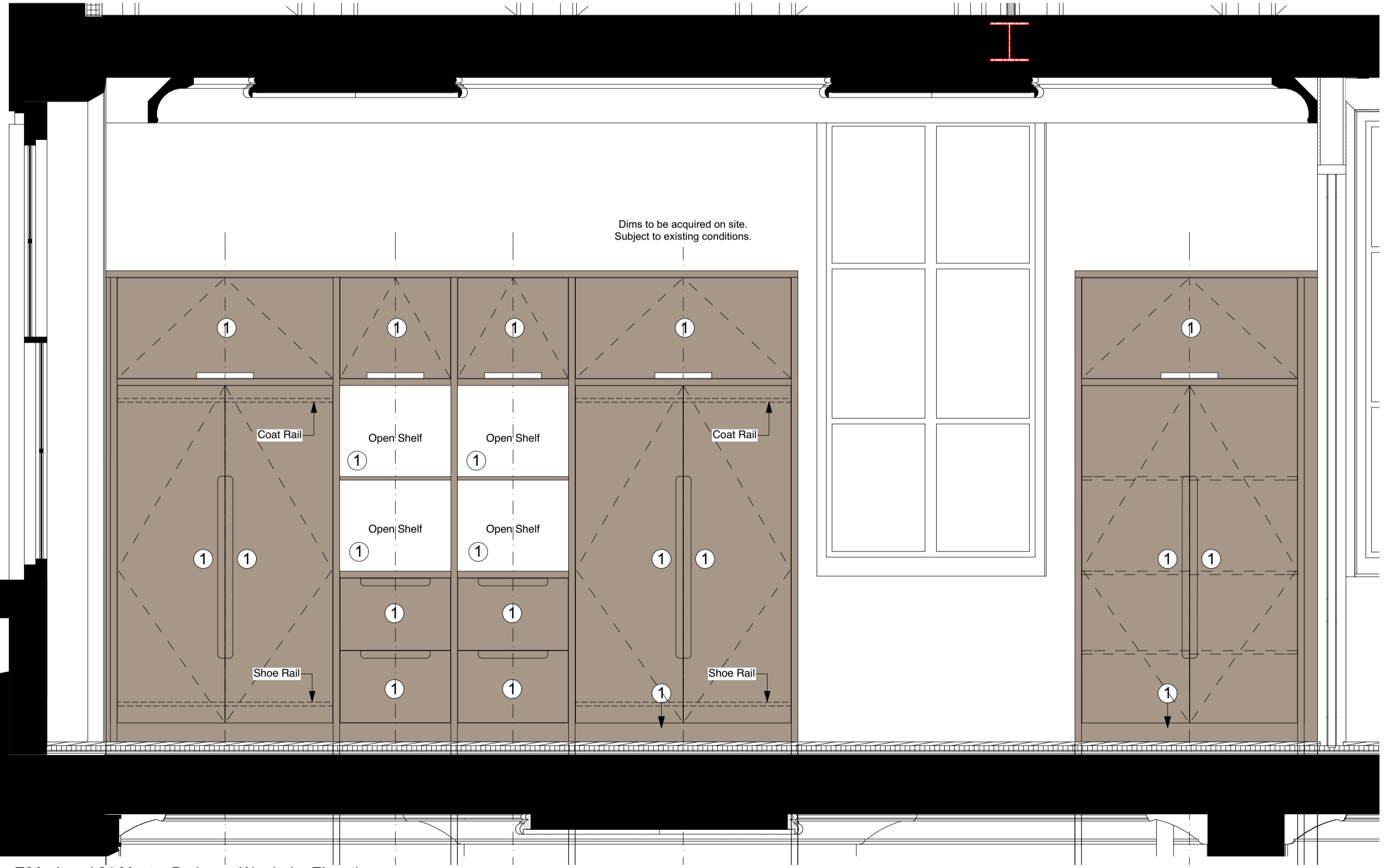
PROJECT
KIDDERPORE AVENUE

DRAWING
Kidderpore Hall
KH-01 Joinery Sheet 3

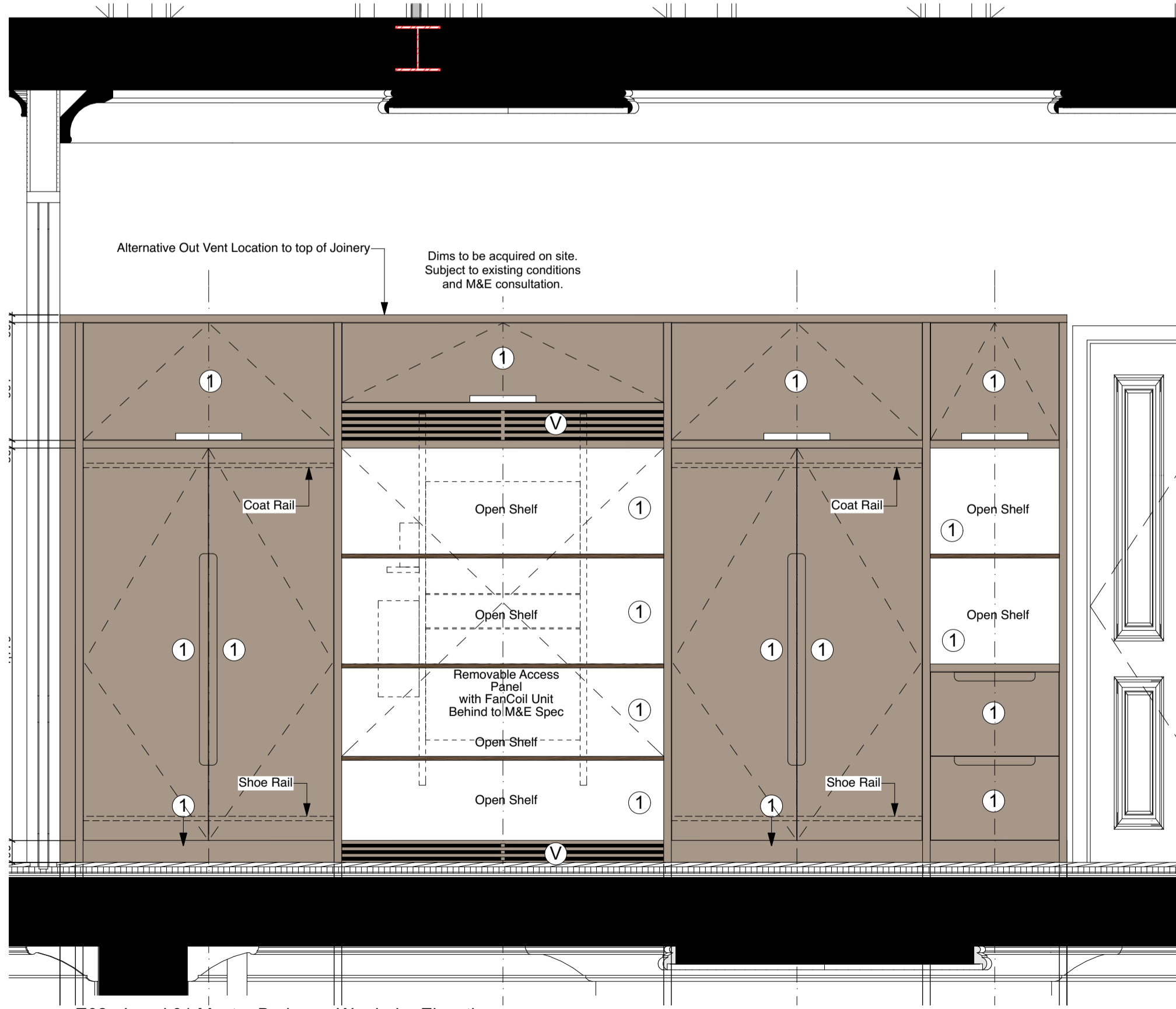
SCALE 1:20, 1:200, 1:22 @ A1 DATE 20/12/2018

DRAWING No. 15 230
9000-DRG-08KH- DE012
DRAWN BY K/C
REV T1

A & Q PARTNERSHIP (LONDON) LTD
THE LUX BUILDING, 2-4 HOXTON SQUARE, LONDON N1 6 NU
Tel: 020 7613 2244 Fax: 020 7613 2642 Email: london@aqp.co.uk
ARCHITECTURE DESIGN MASTERPLANNING INTERIORS



E01 - Level 01 Master Bedroom Wardrobe Elevation
1:20@A1



E02 - Level 01 Master Bedroom Wardrobe Elevation
1:20@A1