

Plan taken from S.C.Green's 'Phase 4' (Drg No. 4013/A1/05G).

Project: 190 Goldhurst Terrace, London, NW6 3HN

Title: Layout of Zones used for PDISP Analyses (Rev.R4)

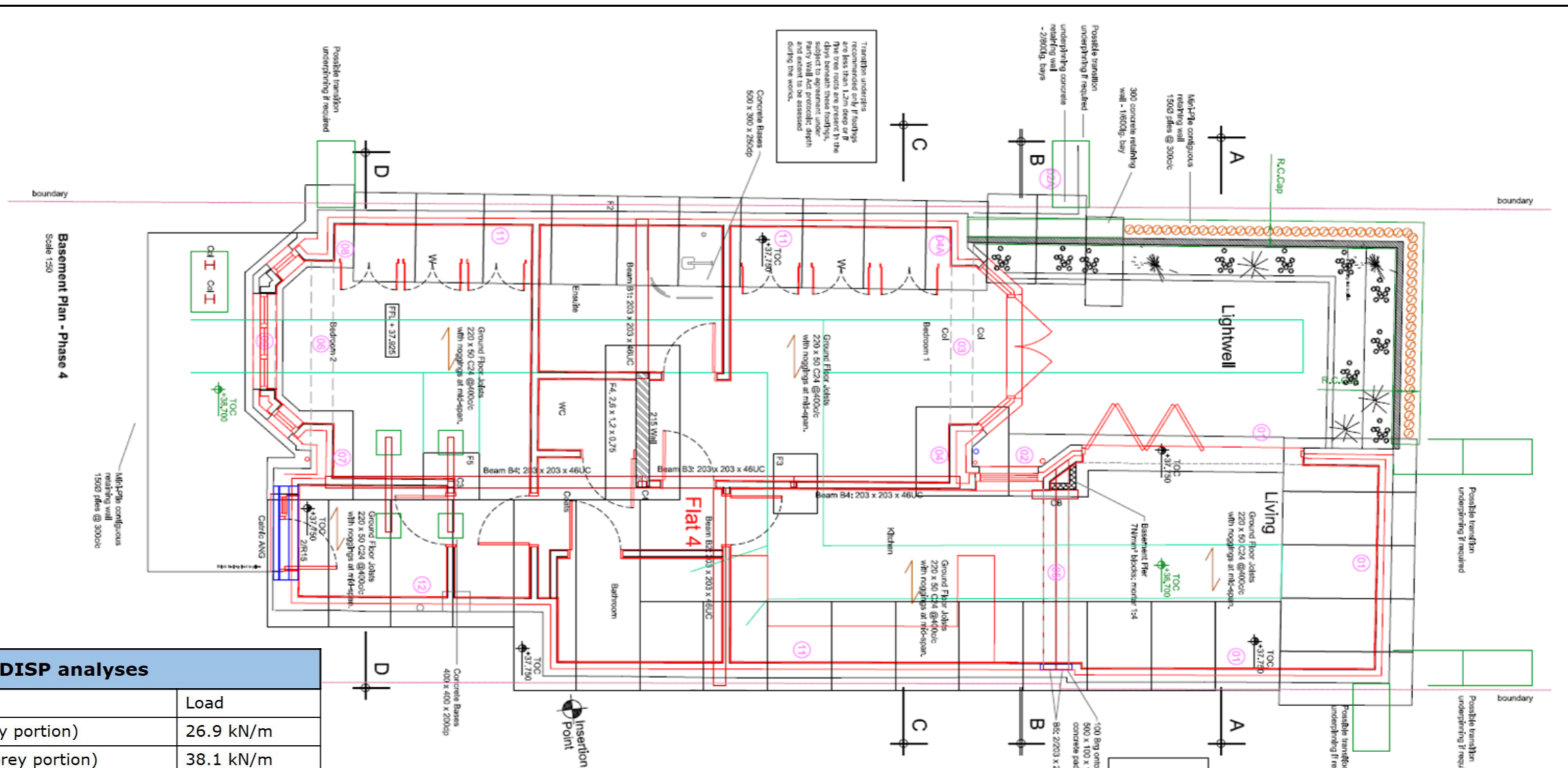
Figure: D1

Date: April 2018

Checked: AG

Approved: KRG

Scale: NTS



Loads used for PDISP analyses	
Foundation	Load
01 Rear Flank Wall – rear part (two storey portion)	26.9 kN/m
02 Rear Flank Wall – front part (three storey portion)	38.1 kN/m
02A Rear Flank Wall – to No.192	38.1 kN/m
03 Rear Wall – main building	57.8 kN/m
04 Load on central pier (rear wall)	157.5 kN
04A Load on left pier (rear wall)	86.6 kN
05 Rear Wall – over rear projection	49.8 kN/m
06 Front Wall	42.8 kN/m
07 Load on central pier	117.4 kN
08 Load on left pier	47.4 kN
09 Bay Wall	32.1 kN/m
10 Load on corner piers	57.7 kN
11 Party Wall	42.8 kN/m
12 Right Flank Wall	40.5 kN/m
Foundation F3	91 kNm ²
Foundation F4	115 kNm ²
Foundation F5	91 kNm ²

Plan taken from S.C.Green's 'Phase 4' (Drg No. 4013/A1/05G).

Project: 190 Goldhurst Terrace, London, NW6 3HN

Title: Load Takedown by S.C.Green Ltd

Figure: D2

Date: April 2018

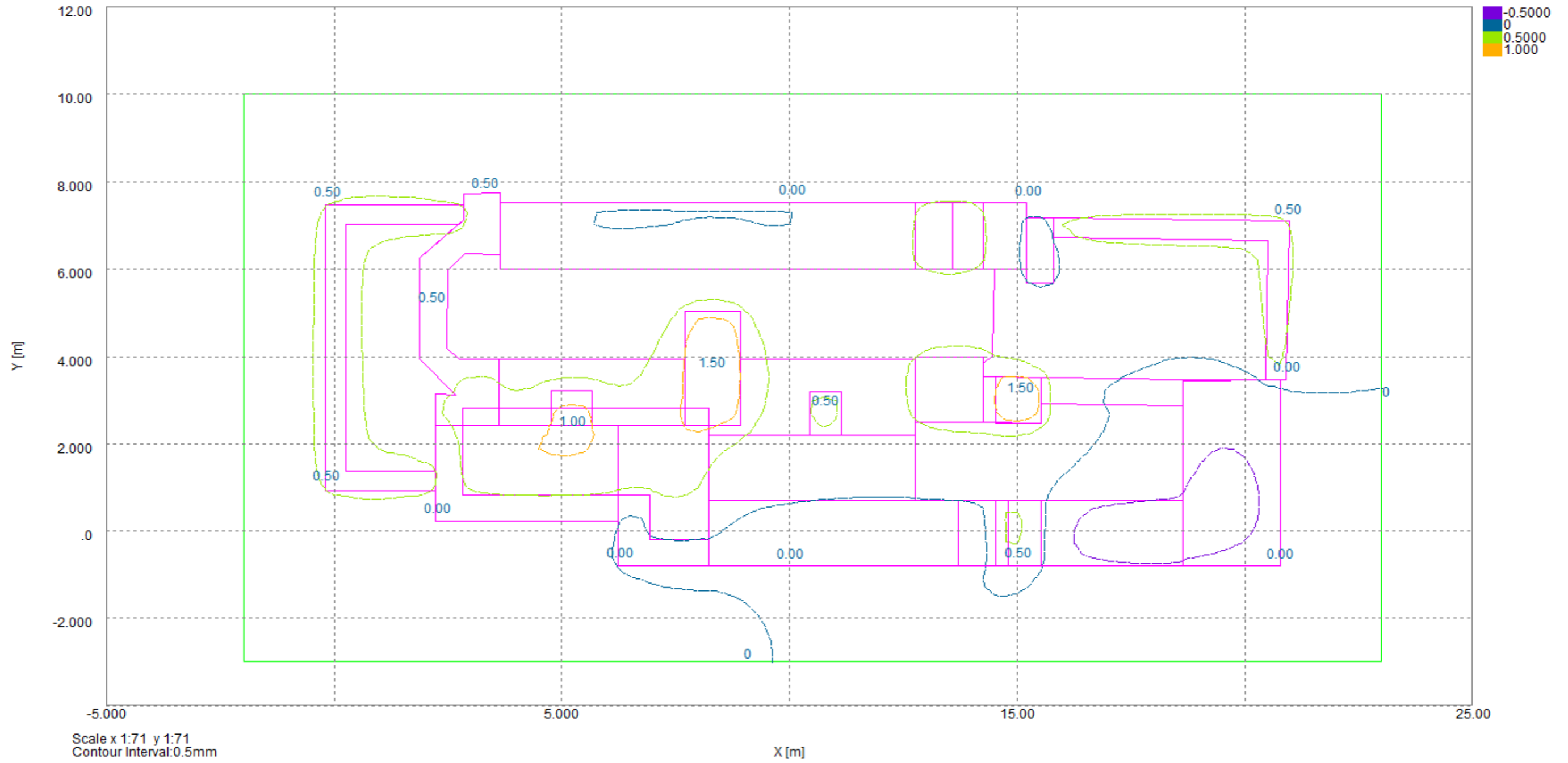
Checked: AG

Approved: KRG

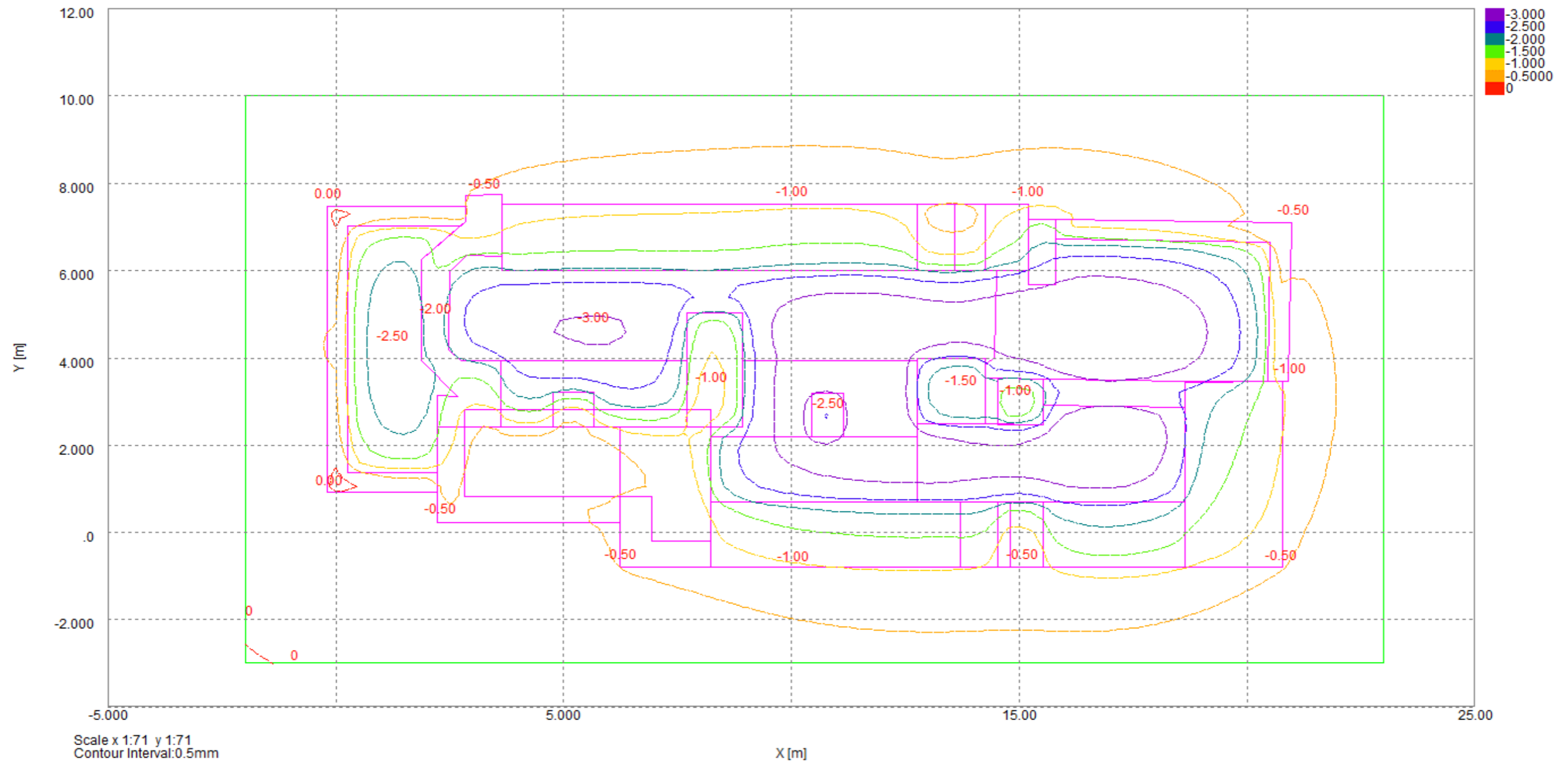
Scale: NTS



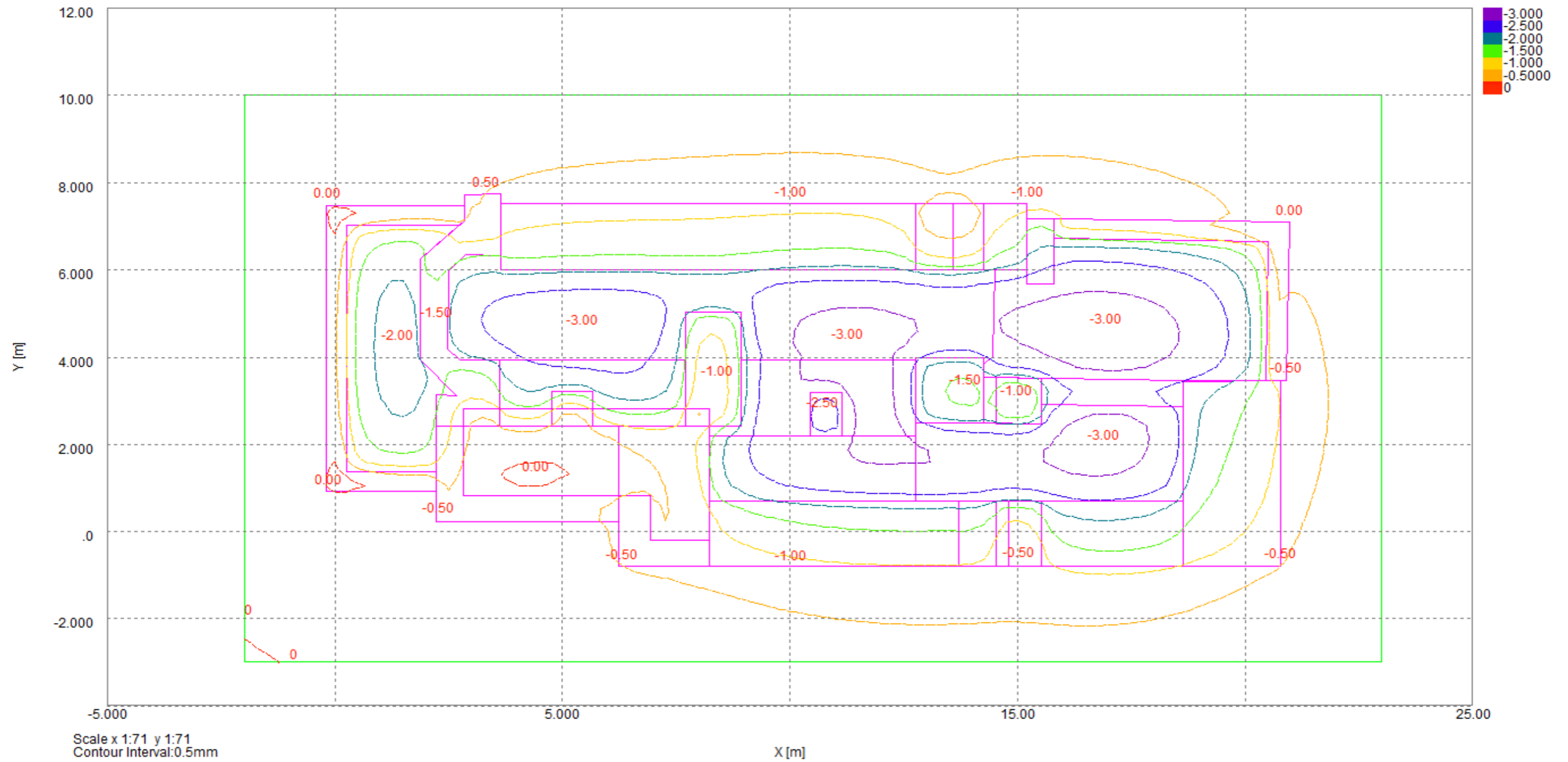
Settlement Contours : Grid 1 at 37.4500m



Settlement Contours : Grid 1 at 37.4500m



Settlement Contours : Grid 1 at 37.4500m



Settlement Contours : Grid 1 at 37.4500m

