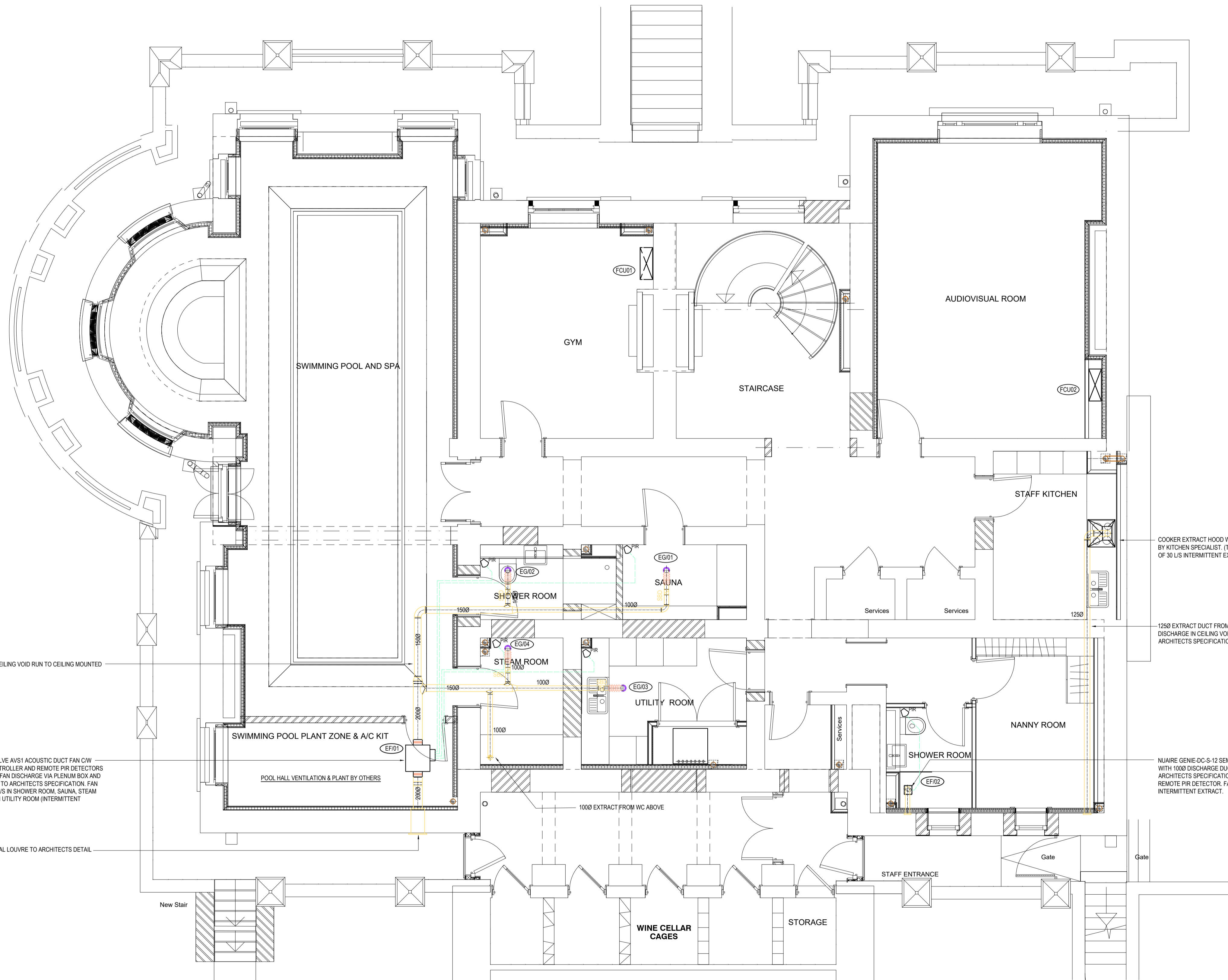


Legend

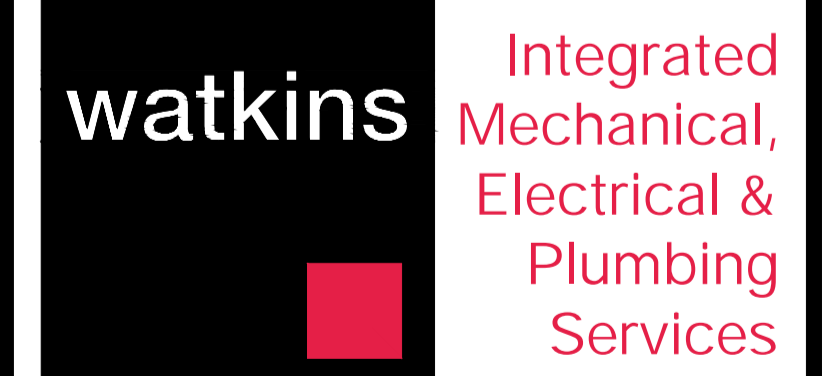
ATT	-	Attenuator
EG	-	Extract grille
EF	-	Extract fan
EL	-	Extract louvre
FCU	-	Fan coil unit
MVHR	-	Mechanical ventilation heat recovery unit
LSCG	-	Linear slot grille
SD	-	Set down
SG	-	Supply grille
SL	-	Supply louvre
SU	-	Set up
SU	-	Set up
HUI	-	Heat interface unit
MVHR	-	Mechanical ventilation heat recovery

Notes

- This drawing shall be read in conjunction with all Mechanical and Electrical drawings, Schedules and Specification.
- Contractor to allow for on site co-ordination with the structure and other services and the production of fully dimensioned working drawings prior to installation.
- All equipment to be installed in accordance with the manufacturers instructions.
- All Apartment ventilation installations shall be installed in accordance with the building regulation (in particular Parts B, F&L1A), NHBC, BS5588, BS 5925, BS EN 13465.
- All Apartment ventilation ductwork shall comprise white coloured rigid PVC flat ducting and components in standard sizes of 220x90mm or 204x60mm which correspond to 150mmØ and 100mmØ respectively. Flat duct systems shall be interchangeable with white coloured rigid PVC circular ducting via appropriate adaptors.
- All changes of direction shall utilize 45° bends wherever possible in order to reduce system resistance and noise due to turbulence. If 90° bends are utilized they shall not be installed in close proximity to each other and double bend sets shall be avoided. All ductwork shall be secured to the structure via the appropriate channel clips or brackets.
- Connections to external louvres shall be via bespoke transition pieces shall be via bespoke transition pieces manufactured from either rigid PVC sections or galvanised sheet steel, ensuring angle of taper is not greater than 30° and includes at least one internal splitter to even air flow across full face of louvre. All louvre transitions must be thermally insulated and vapour sealed.
- All ductwork component joints shall be solvent welded socket & spigot arrangements using a suitable PVC solvent adhesive, being sealed completely air tight with white coloured silicone duct sealant and having duct tape applied around the full joint / seam upon completion. All ductwork must be installed to "Class A" pressure classification as stipulated in HVCA Specification DW144 and achieve an "Intermediate Level" cleanliness standard as defined in HVCA Specification DW/TM2, being tested upon completion and prior to commissioning.
- Ensure that any rectangular or circular rigid PVC duct passing through a designed fire barrier is provided with an intumescent "Fire Wrap" sleeve having metal collar, capable of fully compressing the ductwork to completely seal the opening and prevent the passage of air. Fire sleeves/collars shall be installed within the opening using the surrounding structure to provide lateral support on all side in operation. All openings for fire sleeves & collars shall be made good with intumescent duct sealant ensuring gaps are completely filled to their full depth or thickness.
- Kitchen specialist to supply and fit kitchen extract canopy with sufficient duty to meet Part F Building Regulations.
- FCU plenum and supply ductwork to be internally acoustically treated with pyro foam in accordance with the requirements of the acoustic consultant.
- All supply & extract ductwork from the MVHR unit to atmosphere shall be insulated.
- All penetrations through FCU return air plenum are to be hermetically sealed.
- Duct / transition from extract fan / MVHR unit to attenuators to be acoustically insulated.



FOR PLANNING



Watkins House, Leigh Road
Haine Business Park,
Ramsgate, Kent, CT12 5EU
TEL : 01843 852 277
info@watkins.co.uk, watkins.co.uk

COPYRIGHT ©
This drawing is copyright and may not be altered, reproduced, copied, lent borrowed or sold without the express permission of C Watkins Plumbing Ltd.

RELATED DOCUMENTS
This drawing should be read with the appropriate Specification (s) and Schedule (s) and all other standard documentation.

WARNING
Do Not Scale from this drawing. Verify all dimensions, levels and structural details on site.

REVISIONS	CLIENT	CONSULTING ENGINEER	CONTRACT	DRAWING TITLE
P01 19/12/18 Background updated. Issued for Planning submission	Mount Anvil 140 Aldersgate Street London	C Watkins	Kidderpore Hall Kidderpore Avenue London NW3	Lower Ground Floor Ventilation Layout

DATE 29/10/18	DRAWN KN
SCALE 1:50 @ A1	APP. CW
DRG No. 6003-DRG-39KH-LG01	Rev P01