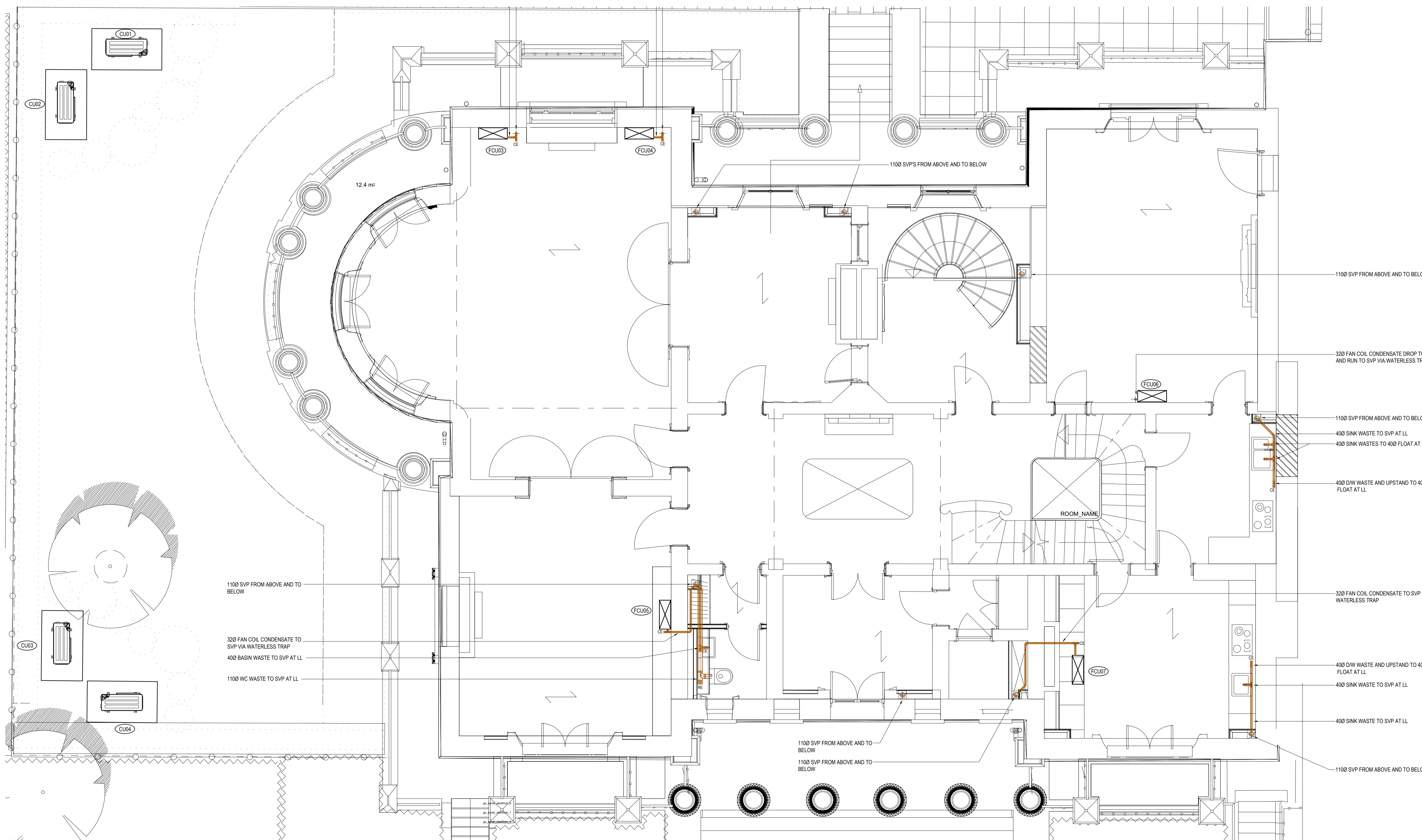
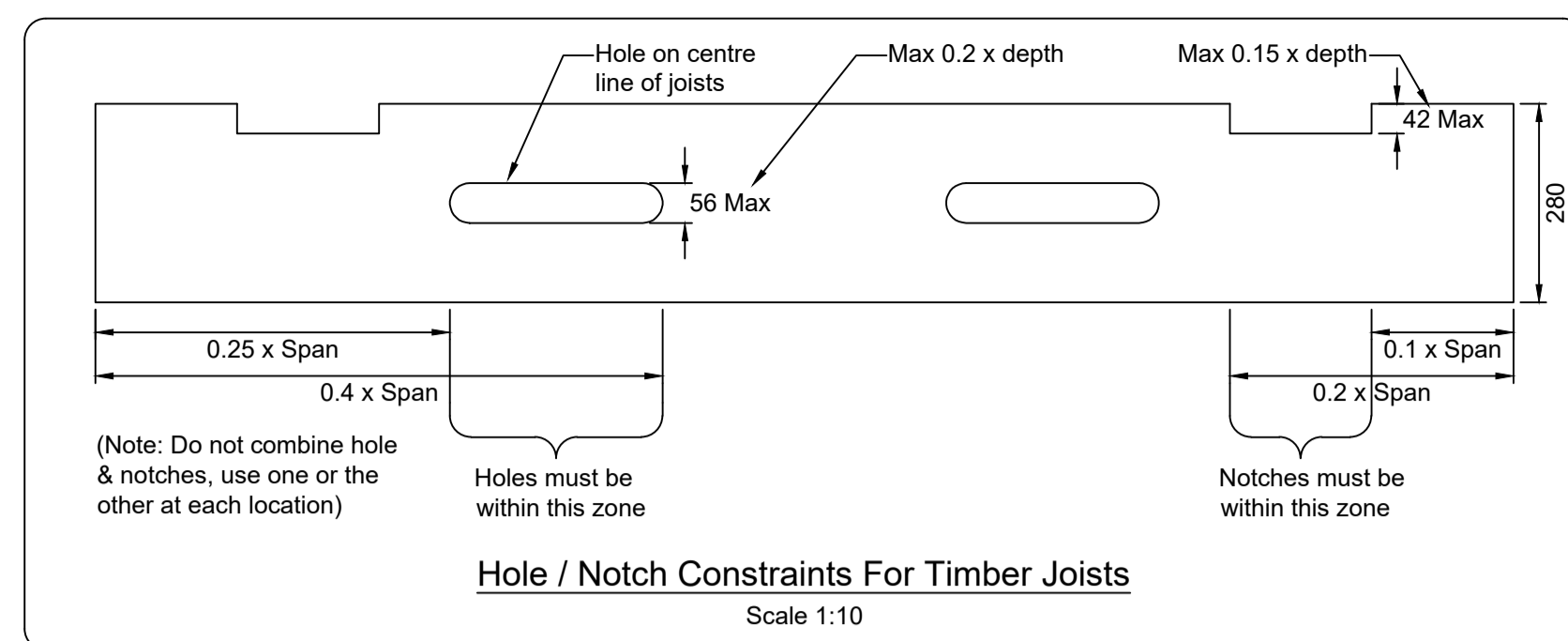


**Notes**

1. This drawing shall be read in conjunction with all Mechanical and Electrical drawings, Schedules and Specification.
2. Contractor to allow for on site co-ordination with the structure and other services and the production of fully dimensioned working drawings prior to installation.
3. All equipment to be installed in accordance with the manufacturers instructions.
4. All works associated with the public health services shall conform to the manufacturers instructions and Building Regulations Approved Document Part H, and BSEN 12056 & BSEN 752.
5. All installation works associated with the public health services shall be carried out by competent installers qualified to the standards required by the Institute of Plumbing & BESA.
6. It is the responsibility of the public health services contractor to check the positions and suitability of each drain point and to report any discrepancies to the engineer before commencing any work.
7. All materials required for the installation of the public health services shall conform to the requirements of the project specification.
8. All works shall be carried out in accordance with all current Health & Safety legislation and requirements.
9. Access door to be provided typically 1.6m to centre above FFL on all SVP's.
10. Intumescent collars to be fitted to all SVP's where they pass through floors & fire walls.
11. Overflows from all WC's & urinal cisterns to discharge into flush pipes.
12. All SVP's to be acoustically insulated within builderswork package in accordance with architects and acoustic engineers specification.
13. All branches & bends on SVP's to be complete with access doors & rodding eyes.
14. Expansion in pipework to be allowed for in accordance with manufacturers requirements.
15. Condense connection to SVP's via waterless traps.
16. Cleaning eyes to be installed on all waste pipework where there is a change in direction.
17. Discharge waste for safety valves to be capable of high temperature discharge applications.
18. All above ground drainage to be installed in solvent weld UPVC.
19. Cleaning eyes to be provided at all change of direction of condensate pipework.
20. BBA approved air admittance valve to be fitted above the floor level of appliance. If fitted within boxing, the builder shall provide ventilation opening to the duct and access for maintenance.
21. Please see architects drawings & acoustic engineers specification for detail on acoustic treatment of soil & waste pipework
22. All penetrations through FCU return air plenum are to be hermetically sealed



**Legend**

- SVP - Soil Vent Pipe
  - S/S - Stub Stack
  - AAV - Air Admittance Valve
  - LL - Low Level
  - HL - High Level
  - CE - Cleaning Eye
  - RE - Rodding Eye
  - FCU - Fan Coil Unit
- — — — — Pipework within ceiling void
  - — — — — Pipework at high level
  - — — — — Pipework at low level
  - — — — — Pipework within floor void

**FOR PLANNING**

**watkins** Integrated Mechanical, Electrical & Plumbing Services

Watkins House, Leigh Road  
Haine Business Park,  
Ramsgate, Kent, CT12 5EU  
TEL : 01843 852 277  
info@watkins.co.uk, watkins.co.uk

**COPYRIGHT** ©  
This drawing is copyright and may not be altered, reproduced, copied, lent borrowed or sold without the express permission of C Watkins Plumbing Ltd.

**RELATED DOCUMENTS**  
This drawing should be read with the appropriate Specification (a) and Schedule (a) and all other standard documentation.

**WARNING**  
Do Not Scale from this drawing. Verify all dimensions, levels and structural details on site.

REVISIONS	CLIENT	CONSULTING ENGINEER	CONTRACT	DRAWING TITLE
P01 29/10/18 Preliminary issue for discussion/comment	Mount Anvil 140 Aldersgate Street London	C Watkins	Kidderpore Hall Kidderpore Avenue London NW3	Upper Ground Floor Above ground Drainage Layout
A01 23/11/18 Background updated. Issued for Approval/Comment				
P02 14/12/18 Updated to Architects comments. Background updated. Issued for planning submission.				

DATE	29/10/18	DRAWN	KN
SCALE	1:50 @ A1	APP.	CW
DRG No.	6003-DRG-34KH-UG01	Rev	P02