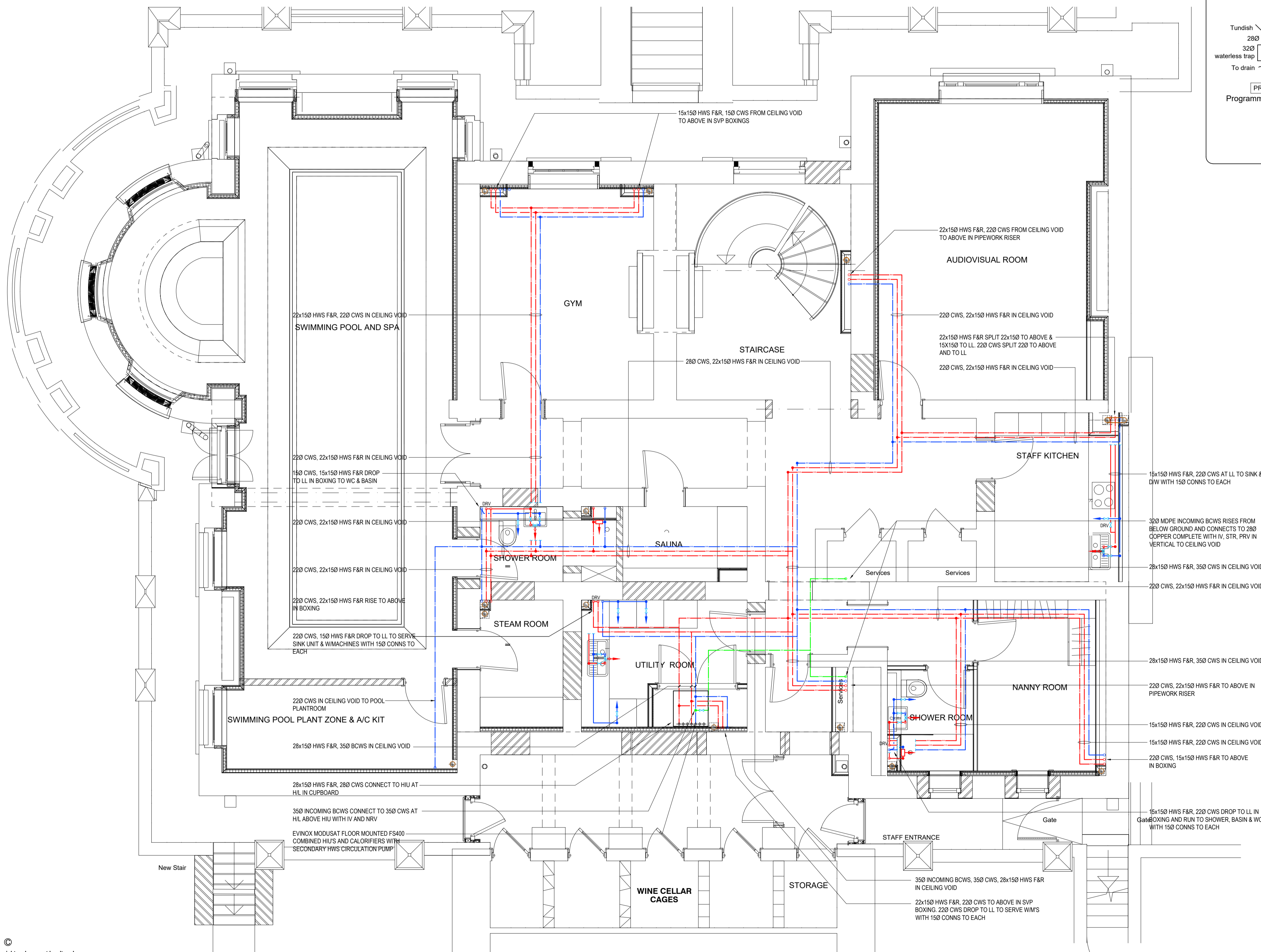
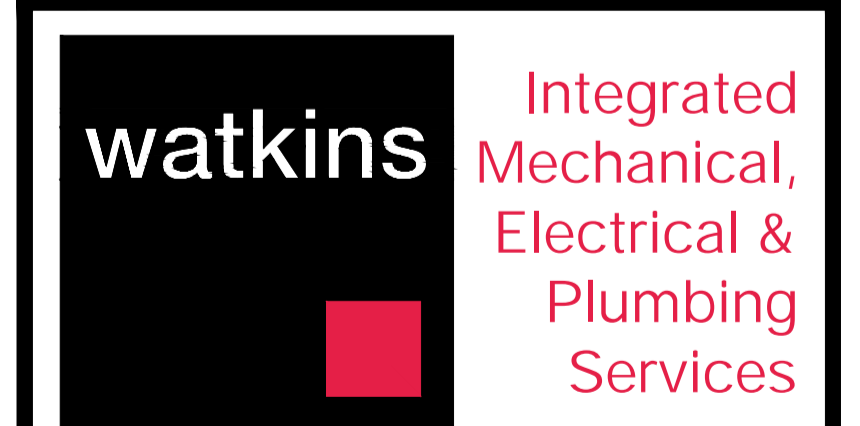


- ### Notes
- This drawing shall be read in conjunction with all Mechanical and Electrical drawings, Schedules and Specification.
 - Contractor to allow for on site co-ordination with the structure and other services and the production of fully dimensioned working drawings prior to installation.
 - All equipment to be installed in accordance with the manufacturers instructions.
 - All notched joists will be wrapped with hair felt lagging and the top of the notch to be mechanically protected.
 - Refer to schematic drawings for further details of pipework & valve arrangements.
 - Domestic Water Services shall be installed in accordance with Water Supply (Water Fittings) Regulations 1999
 - All draw off's to be fitted with ballofix valve.
 - All pipework to be pressure tested prior to filling.
 - All domestic hot & cold water pipework to be copper tube to BSEN 1057 R250 with capillary fittings to BSEN 1254 Part 1.
 - Pipework to be concealed in ceiling voids wherever possible with drops to low level boxed-in also All exposed pipework to be boxed in by main contractor.
 - All pipework to be thermally insulated in accordance with BS 5422 except final connections exposed to view where it shall be painted by others to Architect's detail.
 - All low points to be provided with drain cocks.
 - All pipework penetrations through any structure to be sleeved with oversized tube of same material.
 - The hot & cold final connections to every appliance shall be provided with flow regulation type serving valves with pre-set flow rates.
 - Access panels to be installed by main contractor to allow access to all valves.
 - All pipework to be earth bonded.
 - All gaps between pipework & sleeves to be fitted with fire resistant sealant.

- ### Legend
- adj PRV - Adjustable pressure reducing valve
 - BCWS - Boosted cold water services
 - DCV - Double check valve
 - F&R - Flow & return
 - HIU - Heat interface unit
 - HWSF - Hot water services flow
 - HWSR - Hot water services return
 - IV - Isolation valve
 - STR - Strainer
 - TBV - Thermal balancing valve
 - DRV - Double regulating valve
 - - - - - Hot water service pipework
 - - - - - Incoming boosted cold water pipework
 - - - - - Cold water service pipework
 - - - - - Pipework within ceiling void
 - - - - - Pipework at high level
 - - - - - Pipework at low level
 - - - - - Pipework within floor void



FOR PLANNING



Watkins House, Leigh Road
Haine Business Park,
Ramsgate, Kent, CT12 5EU
TEL : 01843 852 277
info@watkins.co.uk, watkins.co.uk

COPYRIGHT ©
This drawing is copyright and may not be altered, reproduced, copied, lent borrowed or sold without the express permission of C Watkins Plumbing Ltd.

RELATED DOCUMENTS
This drawing should be read with the appropriate Specification (a) and Schedule (a) and all other standard documentation.

WARNING
Do Not Scale from this drawing. Verify all dimensions, levels and structural details on site.

REVISIONS			CLIENT	CONSULTING ENGINEER	CONTRACT	DRAWING TITLE
P01	23/1/18	PRELIMINARY FOR DISCUSSION/COMMENT	Mount Anvil 140 Aldersgate Street London	C Watkins	Kidderpore Hall Kidderpore Avenue London NW3	Lower Ground Floor Domestic Services Layout
P02	17/12/18	Updated to Architects comments. Background updated. Shared for Planning submission.				

DATE	29/10/18	DRAWN	KN
SCALE	1:50 @ A1	APP.	CW
DRG No.	6003-DRG-28KH-LG01		Rev P02