




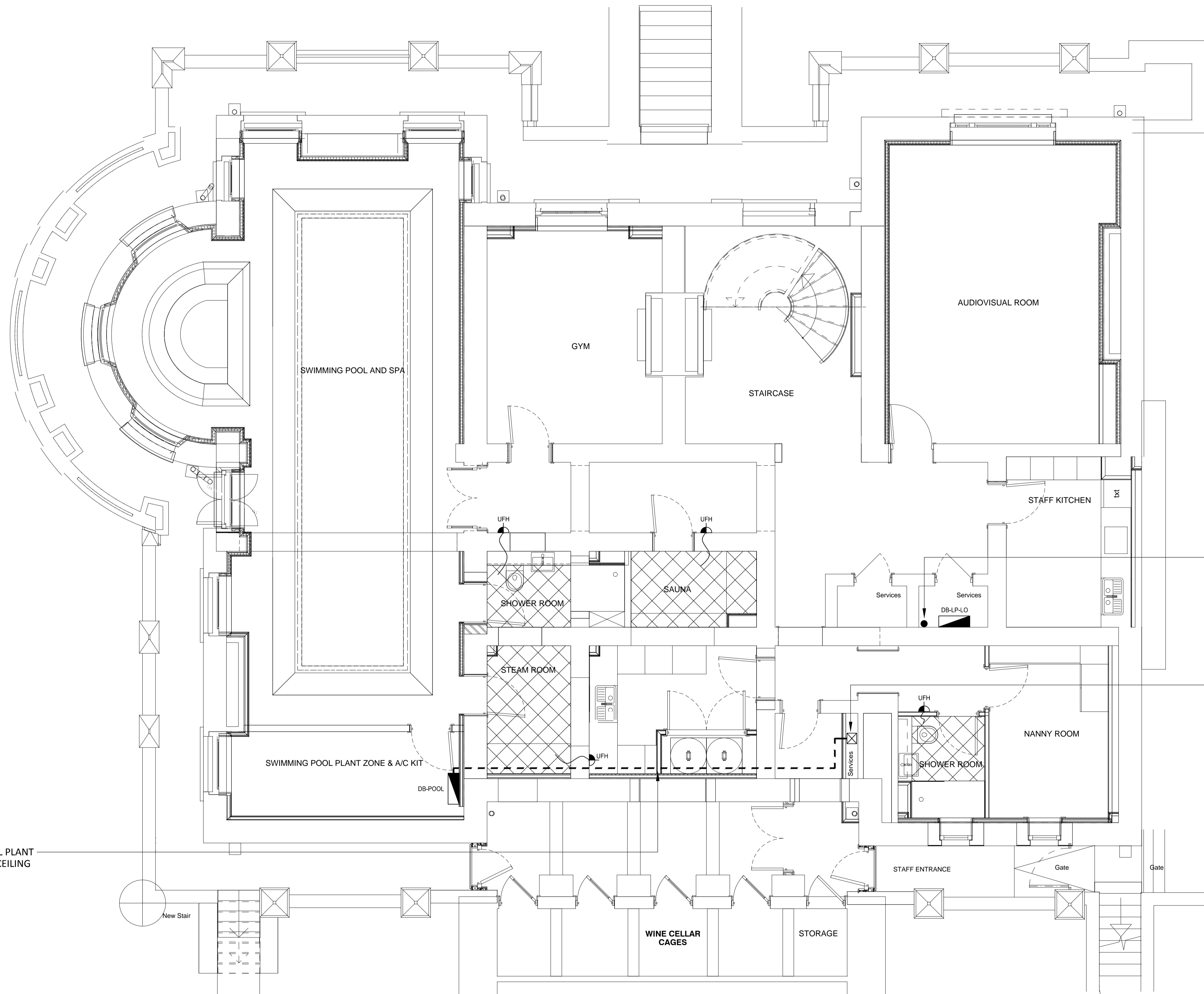


**LEGEND**

-  DISTRIBUTION BOARD
-  SWITCHED FUSED CONNECTION UNIT
-  UNDERFLOOR HEATING
-  SUB-MAIN CABLE ROUTE
-  DENOTES ELECTRIC UNDERFLOOR HEATING AREA



SUB-MAIN CABLE TO POOL PLANT DISTRIBUTION BOARD IN CEILING VOID.

SUB-MAIN CABLE TO DB-LP-L1 & DB-LP-L2 RISES TO FLOOR VOID ABOVE.

SUPPLY ISOLATOR.

**FOR APPROVAL**

**watkins** Integrated Mechanical, Electrical & Plumbing Services

Watkins House, Leigh Road  
Haine Business Park,  
Ramsgate, Kent, CT12 5EU  
TEL : 01843 852 277  
info@watkins.co.uk, watkins.co.uk

**COPYRIGHT ©**  
This drawing is copyright and may not be altered, reproduced, copied, lent, borrowed or sold without the express permission of C Watkins Plumbing Ltd.

**RELATED DOCUMENTS**  
This drawing should be read with the appropriate Specification (s) and Schedule (s) and all other standard documentation.

**WARNING**  
Do Not Scale from this drawing. Verify all dimensions, levels and structural details on site.

REVISIONS	CLIENT	CONSULTING ENGINEER	CONTRACT	DRAWING TITLE
	Mount Anvil 140 Aldersgate Street London	C Watkins	Kidderpore Hall Kidderpore Avenue London NW3	Lower Ground Floor Electric Underfloor Heating & Distribution Layout

DATE 21.12.2018	DRAWN JS
SCALE 1:50 @ A1	APP. AG
DRG No. 6001-DRG-26-LG001	Rev