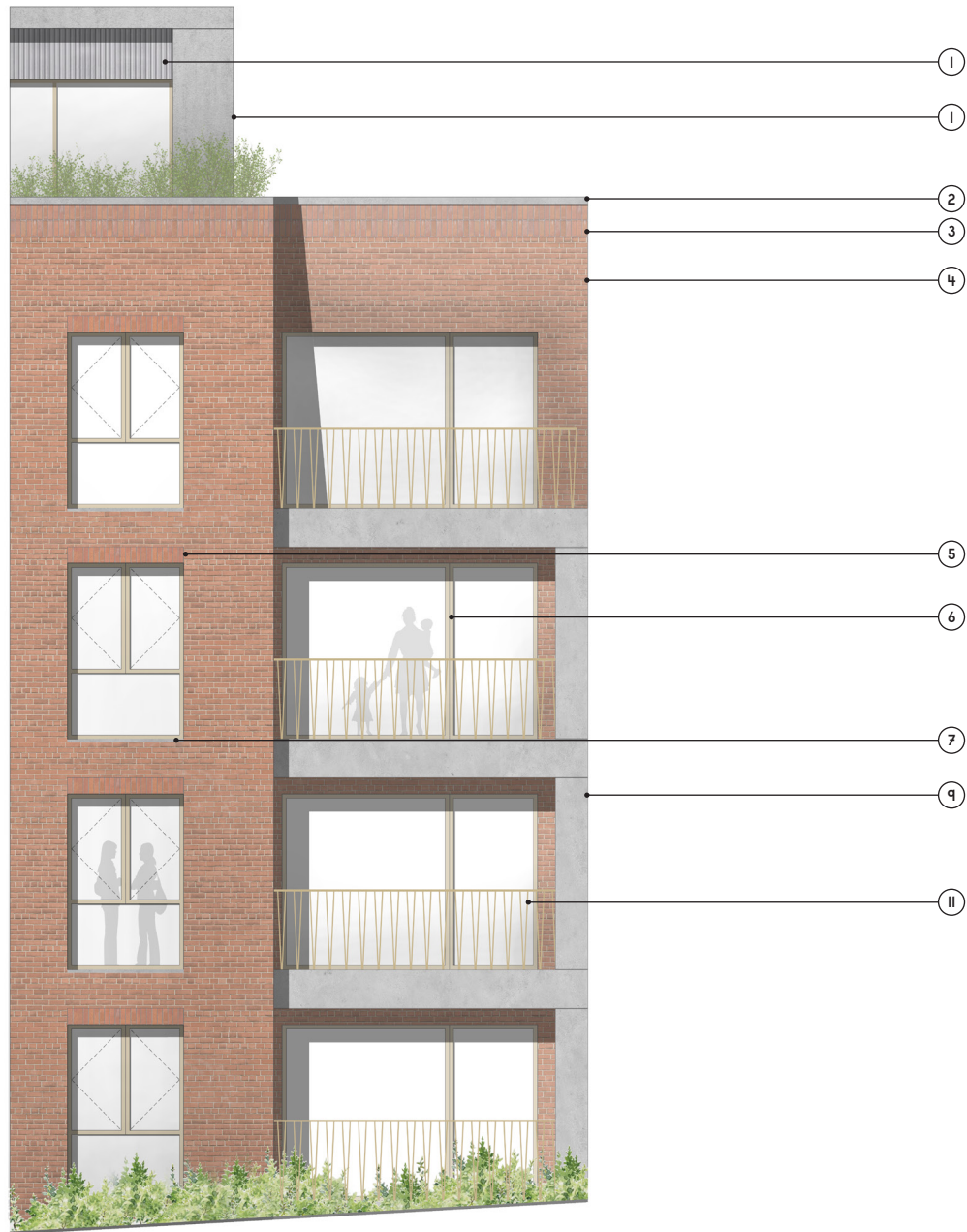
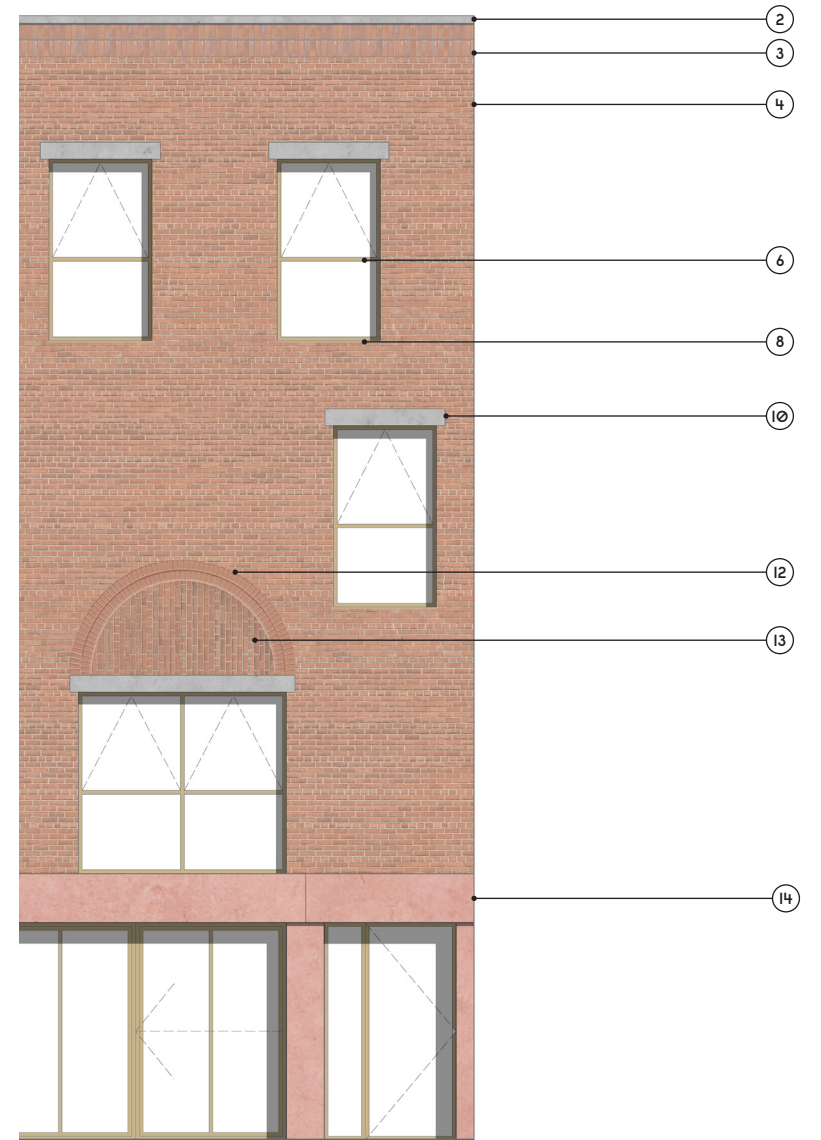


### Material Key

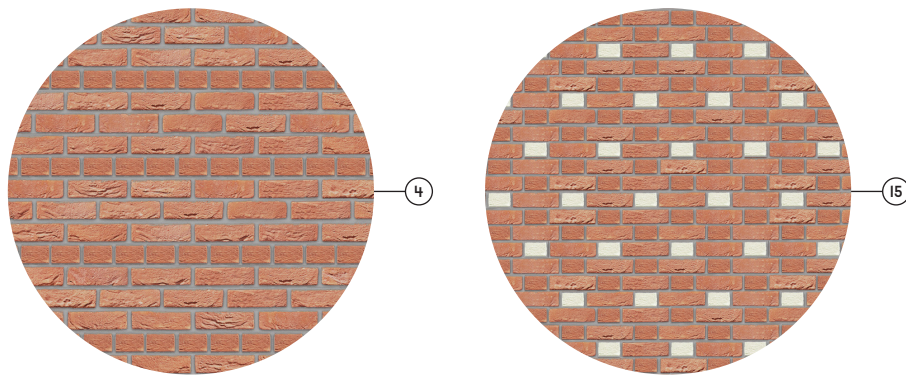
1. Profiled cementitious board
2. Concrete coping stone
3. Soldier course parapet
4. Red english garden wall bond brickwork
5. Soldier course window headers
6. Metal window frames
7. Concrete window sill
8. Metal window sill
9. Concrete balconies
10. Concrete lintels
11. Metal balustrade
12. Brick feature arch
13. Brick infill to arch
14. Pigmented concrete
15. Feature brickwork to courtyard elevations- Refer to key plan above



Building A - Bay Study



Building B - Bay Study



Planning

Scale 1:50  
0 0.5m 1m 2m 3m 5m

First Issue	11.01.19	AB	-
Revision description	Date	Init	Rev
<b>rcka</b>			
29-31 Cowper Street London EC2A 4AT		T +44 (0) 20 7381 7042 F +44 (0) 20 7382 1040 W <a href="http://www.rcka.co.uk">www.rcka.co.uk</a>	
Title Bay Study As Proposed Building A & B			
Project Camden HNCC		Client Camden Council	
Date 11.01.2018	Drawn by CS	Checked AB	Scale 1:100 @ A3
Job No 1415	Dwg No PL-E-104	Revision -	
©2018 RCKA. This drawing is not to be scaled - use written dimensions only. Any discrepancies to be reported to the architect. All dimensions to be checked on site.			