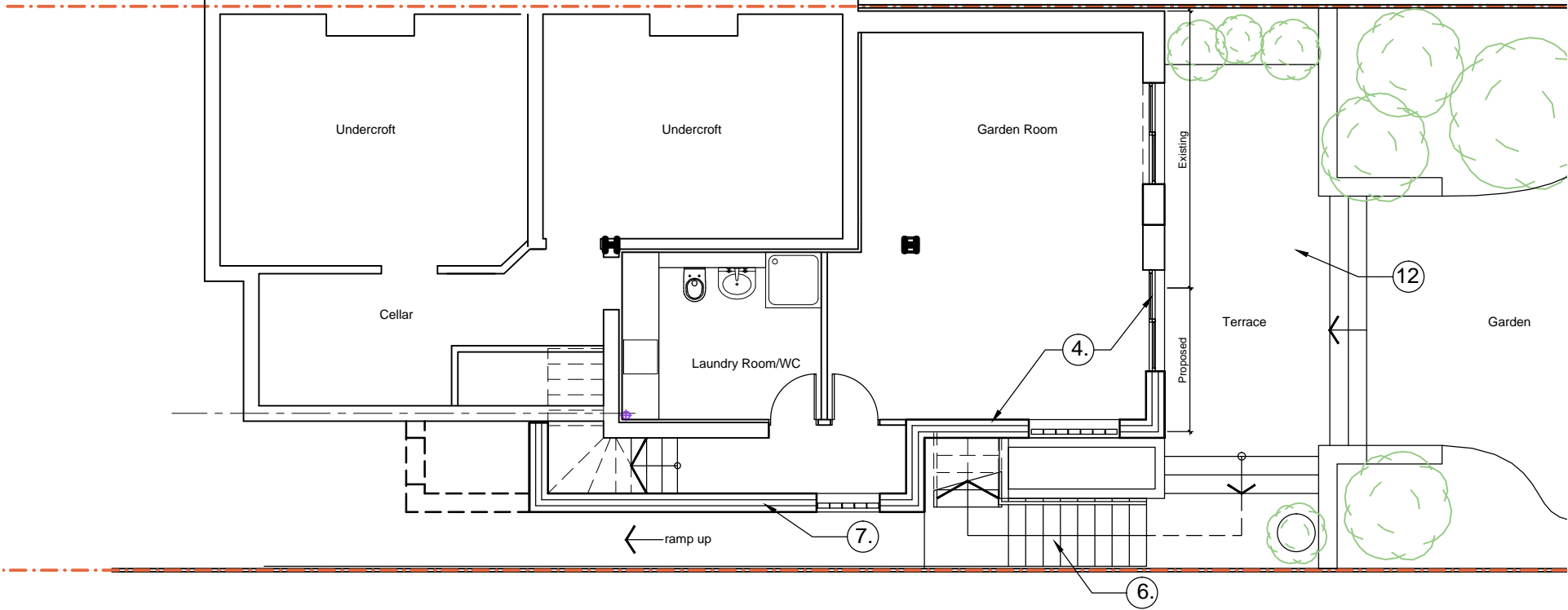


PROPOSED LOWER GROUND FLOOR



PROPOSED WORKS

- 4. Extension to garden room and access route to garden level. Built in line with existing rear of house. Finished in painted render to match existing with dark gray metal capping to parapet. Metal framed dark gray painted glass doors to garden elevation and high level glass block window to side.
- 6. New stairs from side passageway to rear door and garden
- 7. Side extension to accommodate kitchen, store room and stair to lower ground floor. Built in line with existing rear of house and set back from the street elevation. Finished in painted render to match existing with dark gray metal capping to parapet.
- 12. New terrace and planters at garden level

Scale line@ 1:100



| Revisions | | Project | | Drawing | |
|--|--|--------------|--|--|----------|
| <div>1. This drawing and all the designs herein are the sole property of HAT and may not be used without written authorisation.</div> <div>2. These drawings are not for construction and the contractor must verify all site dimensions and must notify h&dd of any discrepancies.</div> <div>3. Do not scale from this drawing all dimensions shown to be confirmed on site prior to construction</div> <div>4. All measurements in metric</div> | | <div>N</div> | | 14 Makepeace Avenue | |
| | | | | Holly Lodge Estate | |
| | | | | PROPOSED PLANS | |
| Scale | | Date | | Drawing No | Revision |
| 1:100@A3 | | Dec 2018 | | 226_GA-01 | - |
| | | | | <div>HNT</div> <div>ARCHITECTURE / INTERIORS</div> <div>22A Iliffe Yard London SE17 3QA tel: +44(0)207 703 2270 info@hatarch.co.uk www.hatarch.co.uk</div> | |