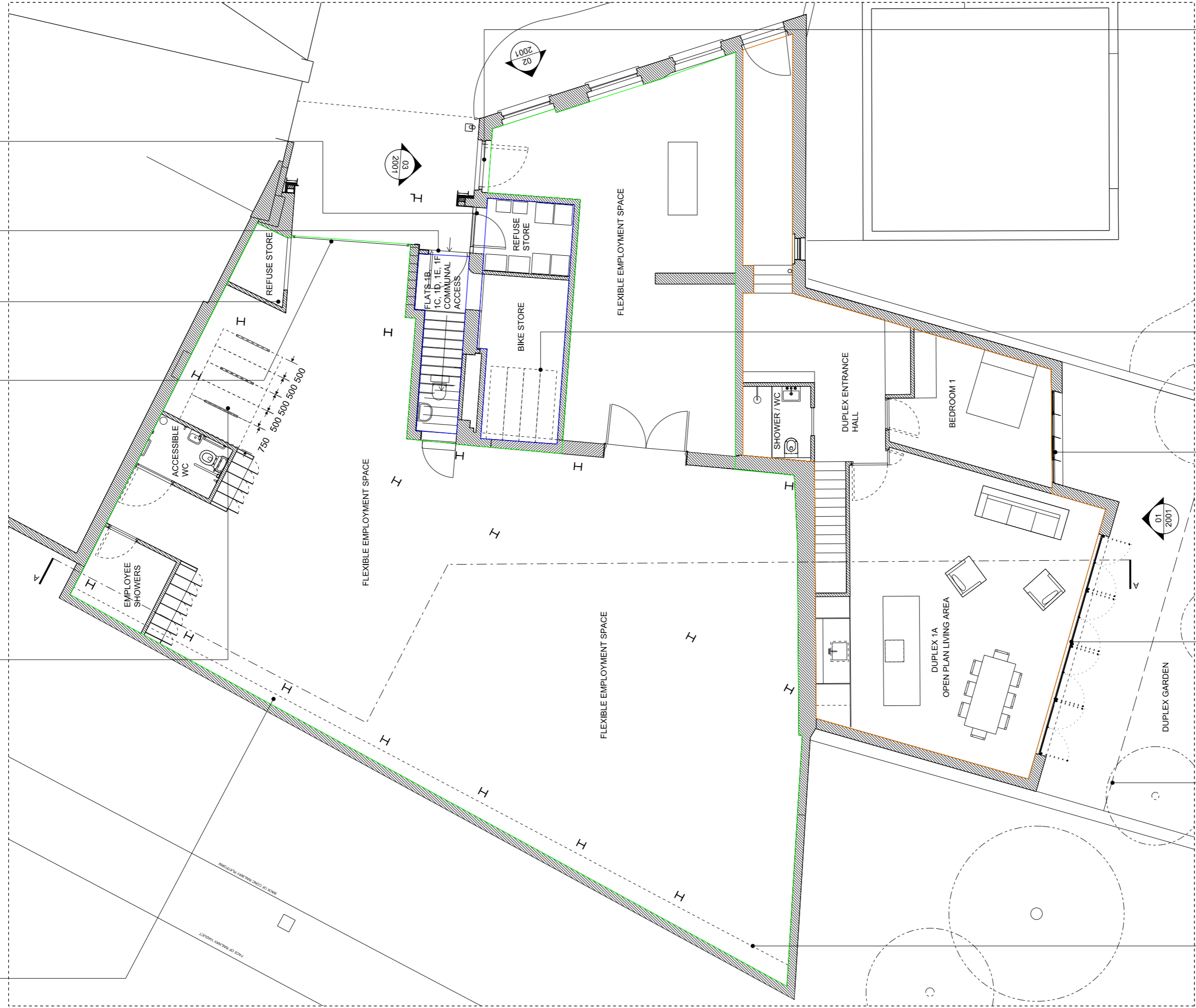


DOTTED LINE INDICATES EXISTING OVERHEAD GLAZING  
 EMPLOYMENT SPACE WITH CYCLE STORE WITH PROVISION FOR 5 CYCLES  
 RELOCATED ROLLER SHUTTERS  
 FLEXIBLE EMPLOYMENT SPACE ENCLOSED CONTROL REFUSE STORE  
 RESIDENTIAL ACCESS 4 NO. 140 LITRE WHEELIE BINS 6 NO. 55 LITRE GREEN BOXES 6 NO. 27 LITRE ORGANIC WASTE RECEPTACLES  
 PROPOSED NEW REFUSE STORE CONTAINING:



DOTTED LINE INDICATES EXISTING OVERHEAD GLAZING  
 DOTTED LINE SHOWS BOTH EXISTING HARDSTANDING TO SOFT LANDSCAPING TRANSITION AND PROPOSED PERMEABLE BRICK PAVING TO SOFT LANDSCAPING TRANSITION  
 METAL FRAMED GLAZED DOORS SIMILAR IN MATERIAL AND STYLE TO EXISTING  
 METAL FRAMED WINDOWS SIMILAR IN MATERIAL AND STYLE TO EXISTING WINDOWS WITH METAL LOUVRES  
 PROPOSED CYCLE STORE WITH 3M HIGH CEILINGS TO CONTAIN PROVISION FOR 8 CYCLES ON A TWO TIER JOSTA CYCLE STAND  
 PROPOSED FLEXIBLE EMPLOYMENT SPACE ENTRANCE  
 DUPLEX 1A  
 OPEN PLAN LIVING AREA  
 BEDROOM 1  
 DUPLEX ENTRANCE HALL  
 SHOWER / WC  
 BIKE STORE  
 REFUSE STORE  
 FLATS 1B, 1C, 1D, 1E, 1F COMMUNAL ACCESS  
 ACCESSIBLE WC  
 EMPLOYEE SHOWERS  
 REFUSE STORE  
 FLEXIBLE EMPLOYMENT SPACE  
 DUPLEX GARDEN

01 PROPOSED GROUND FLOOR PLAN  
A1025 1:100 @ A3

DATE:	REVISION:	DATE:	REVISION:	JOB NO.:	PROJECT:	DRAWING:	SCALE:	DATE:	MOSLEY THOROLD ARCHITECTS LTD
05.06.2018	D1	07.01.2019	FP-3	013	1A PERREN STREET	Proposed Ground Floor Plan	1:100 @ A3	07.01.2019	Studio 2.7 Winkley Street, London, E2 8PY
07.06.2018	D2							DRN / CHD:	+44 (0)20 7739 9380
07.09.2018	FP-D							NM / HT	info@moseleythorold.com
12.09.2018	FP				PLANNING	1APS_A1025	REV.: FP-3		

This drawing to be read in conjunction with the specification and all other contract documents. Drawing not to be scaled and used for construction. Drawing is for information only and is not to be used for any other purpose. No liability is accepted for any errors or omissions. All rights reserved. Copyright and Intellectual Property of all drawings is owned by Mosley Thorold Architects Ltd. All rights reserved.