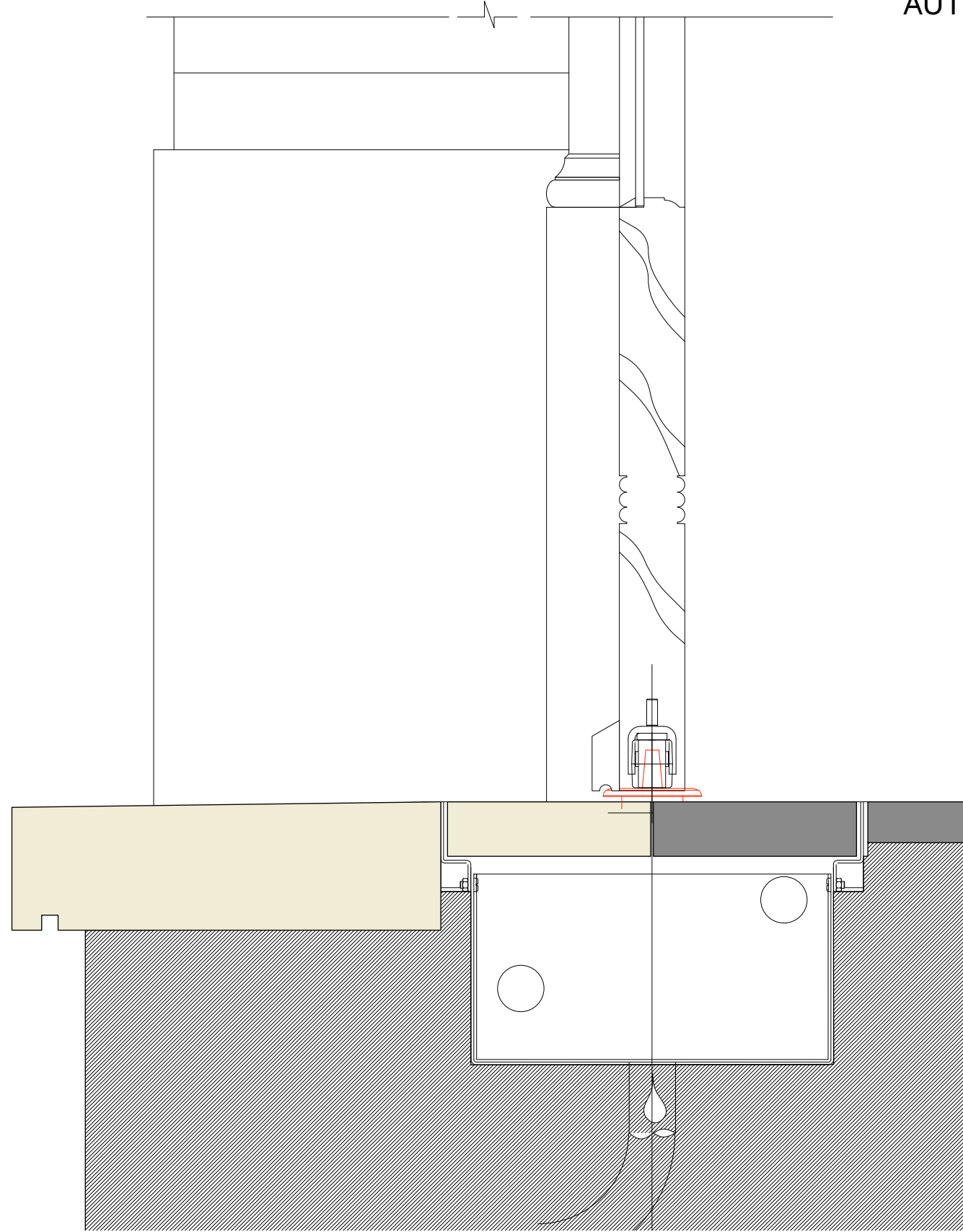
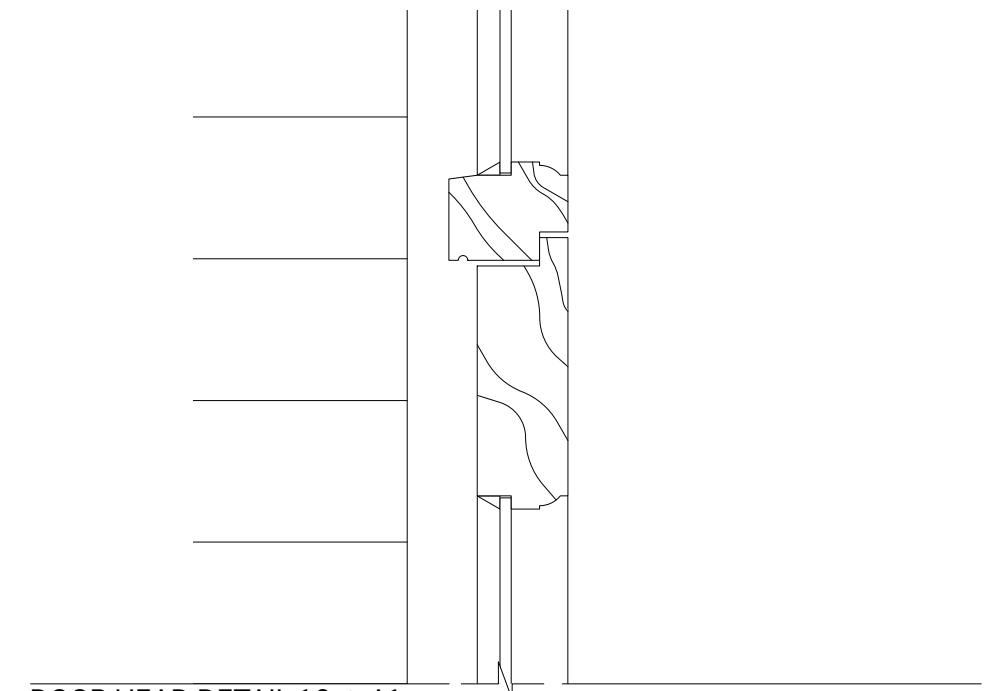


AUTOMATED DOORS - HEAD & SILL DETAILS SCALE 1:2 @ A1 Half actual size

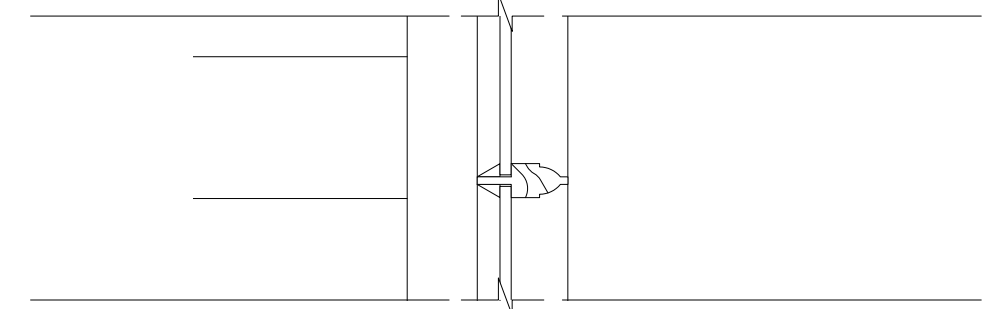


THRESHOLD DETAIL 1:2 @ A1

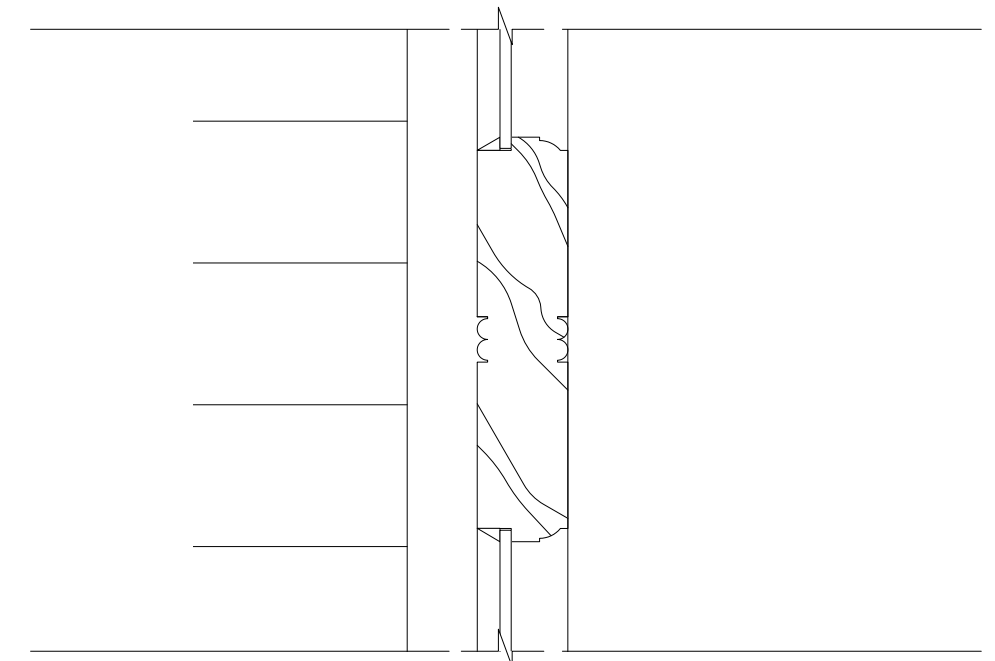
NB: NEW TIMBER PROFILES TO MATCH EXISTING



DOOR HEAD DETAIL 1:2 @ A1



TRANSOM DETAIL 1:2 @ A1



CENTRAL RAIL DETAIL 1:2 @ A1

| Revision | Date | Amendment | Notes | | | | | | | | | | | Client | Project | Drawing | Scale | Date | Drawn | Revision | Burwell Deakins | | |
|----------|------------|----------------|-------|--|--|--|--|--|--|--|------------|------------|----------|---------------------------|--|-------------------------|----------|---------------|-------|----------|-----------------|----------------------------|---------------------------|
| P1 | 13.12.2018 | Planning Issue | | | | | | | | | | | | University College London | Wilkins Building Core Areas - Link Bridges | Door Details - Sheet 02 | 1:2 @ A1 | December 2018 | CL | | | info@burwellarchitects.com | www.burwellarchitects.com |
| | | | | | | | | | | | Project N° | Drawing N° | Revision | Unit 001 | First Floor | | | | | | | | |
| | | | | | | | | | | | 791 | 791/PL/132 | P1 | California Building | 6 Southernhay | | | | | | | | |
| | | | | | | | | | | | | | | London SE13 7SF | West Exeter EX1 1JG | | | | | | | | |
| | | | | | | | | | | | | | | +44 (0) 2083 056010 | +44 (0) 1392 423981 | | | | | | | | |

NO DIMENSIONS ARE TO BE SCALED FROM THIS DRAWING. THE CONTRACTOR/MANUFACTURER IS RESPONSIBLE FOR CHECKING ALL DIMENSIONS AND QUERING ANY DISCREPANCIES. THIS DRAWING IS THE PROPERTY OF BDA ARCHITECTS LTD. COPYRIGHT IS RESERVED BY THEM AND THE DRAWING IS ISSUED ON CONDITION THAT IT IS NOT COPIED, REPRODUCED, RETAINED OR DISCLOSED TO ANY UNAUTHORISED PERSON, EITHER WHOLLY OR IN PART, WITHOUT WRITTEN CONSENT.