
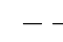
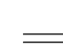
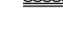
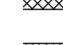
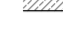


Issue:

# Planning

Drawings for approval.

### Key

-  Existing Structure
-  To be demolished
-  External Wall Construction with Metal Cladding / Render
-  Lift Shaft Structure
-  Compartment Wall
-  Infill Existing Opening With Structure to match Existing

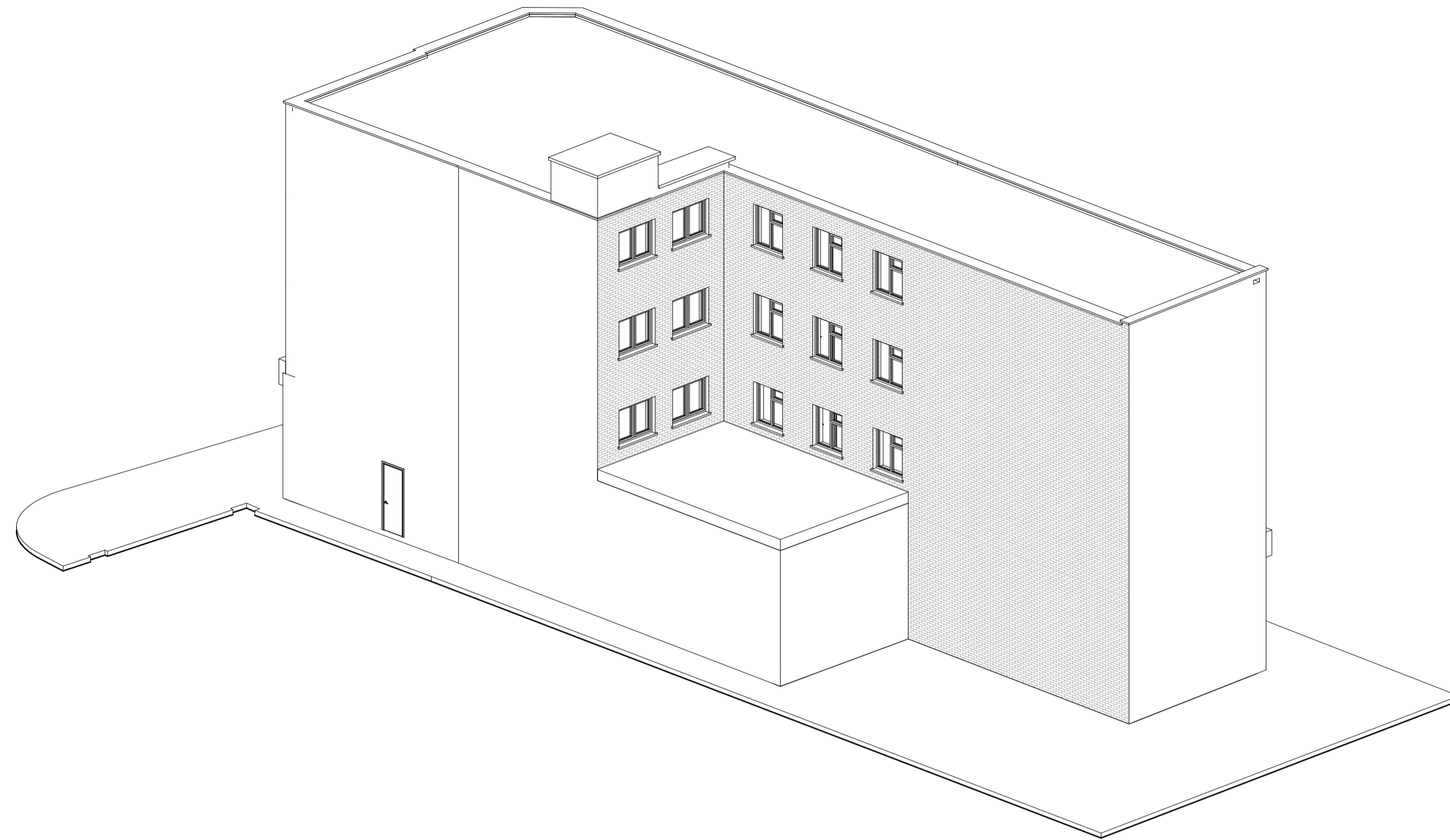
1. New Aluminium power coated (colour grey) Shop Front
2. New Aluminium power coated (colour grey) windows
3. Aluminium projecting feature (colour grey)
4. Composite Metal Cladding (colour grey)
5. Grey Render
6. Composite Metal Cladding to Fascia (colour Grey)
7. Metal hand rail mechanically fixed to inner side of parapet wall.
8. Lift Overrun
9. A.O.V (Automatic Opening Vent)

### General Notes

1. Lift /8 persons / 630kg  
Car: 1100x1400  
Shaft: 2000x1750
2. All Existing Windows to be replaced with new windows



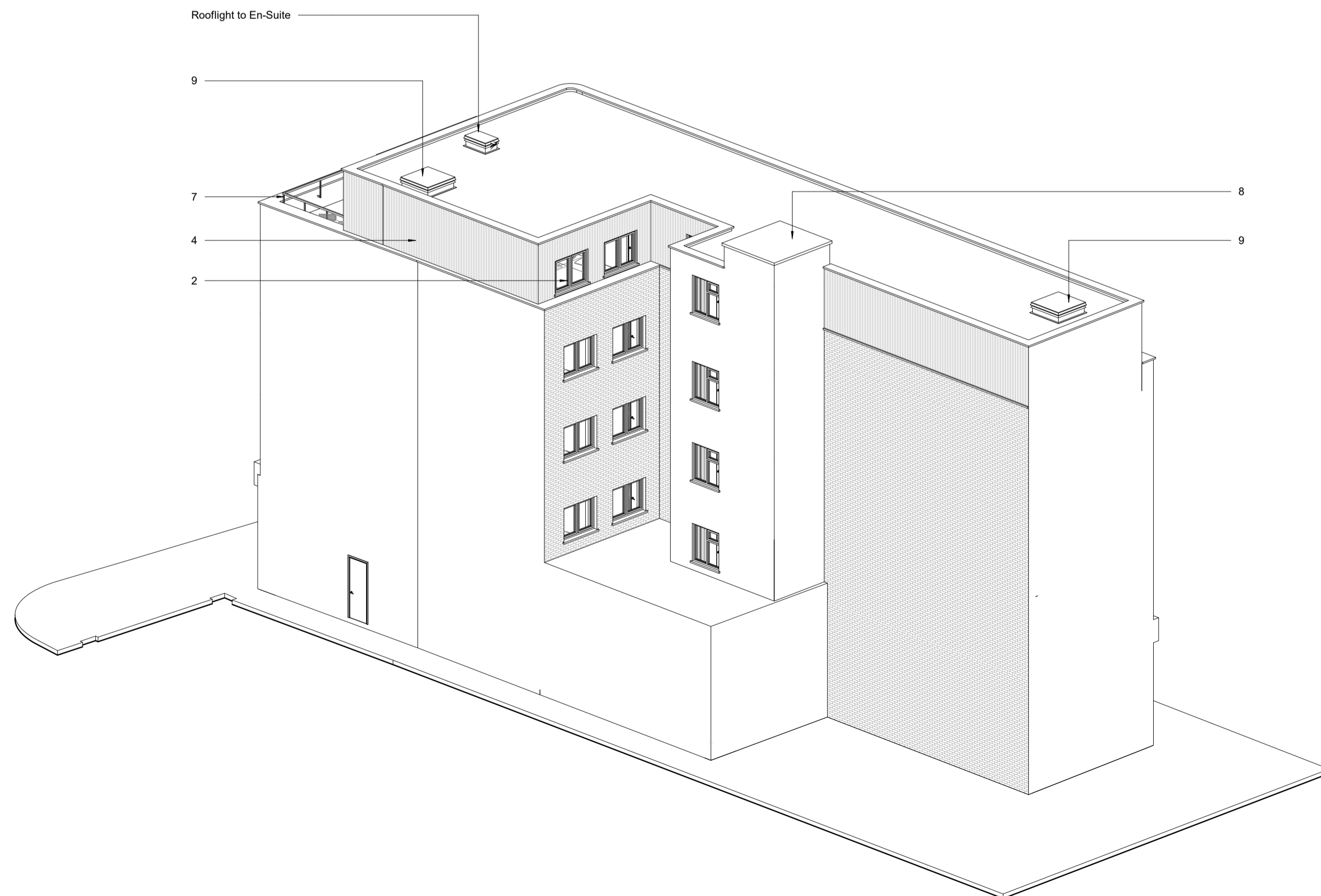
Axonometric Projection as Existing



Axonometric Projection as Existing

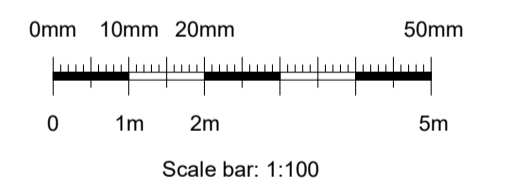


Axonometric Projection as Proposed



Axonometric Projection as Proposed

### DRAWINGS FOR APPROVAL



No scaled dimensions to be taken from this drawings. All dimensions to be site checked.

### Revisions

Rev	Description	Drawn by	Date
A	Consulted metal cladding to roof extension, curved corner on the south west most corner	SH	20.11.2018
B	New Entrance with glass canopy General Amendments, Windows and terrace arrangement	SH	13.12.2018

### CG ARCHITECTS

221 East Barnet Road, Barnet, Herts EN4 8QS  
Tel: 020 8449 5100 Fax: 020 8449 5170

Client:  
Labtech Investments  
limited Ltd

Site:  
Camden Lock Hotel  
89 Chalk Farm Road  
London NW1 8AR

Title:  
Axonometric Projections

Scale: 1 : 1 (@ A1)	Drawn: SH	Checked: CG
Date: December 2018	REV	B
Dwg No 1263/29		