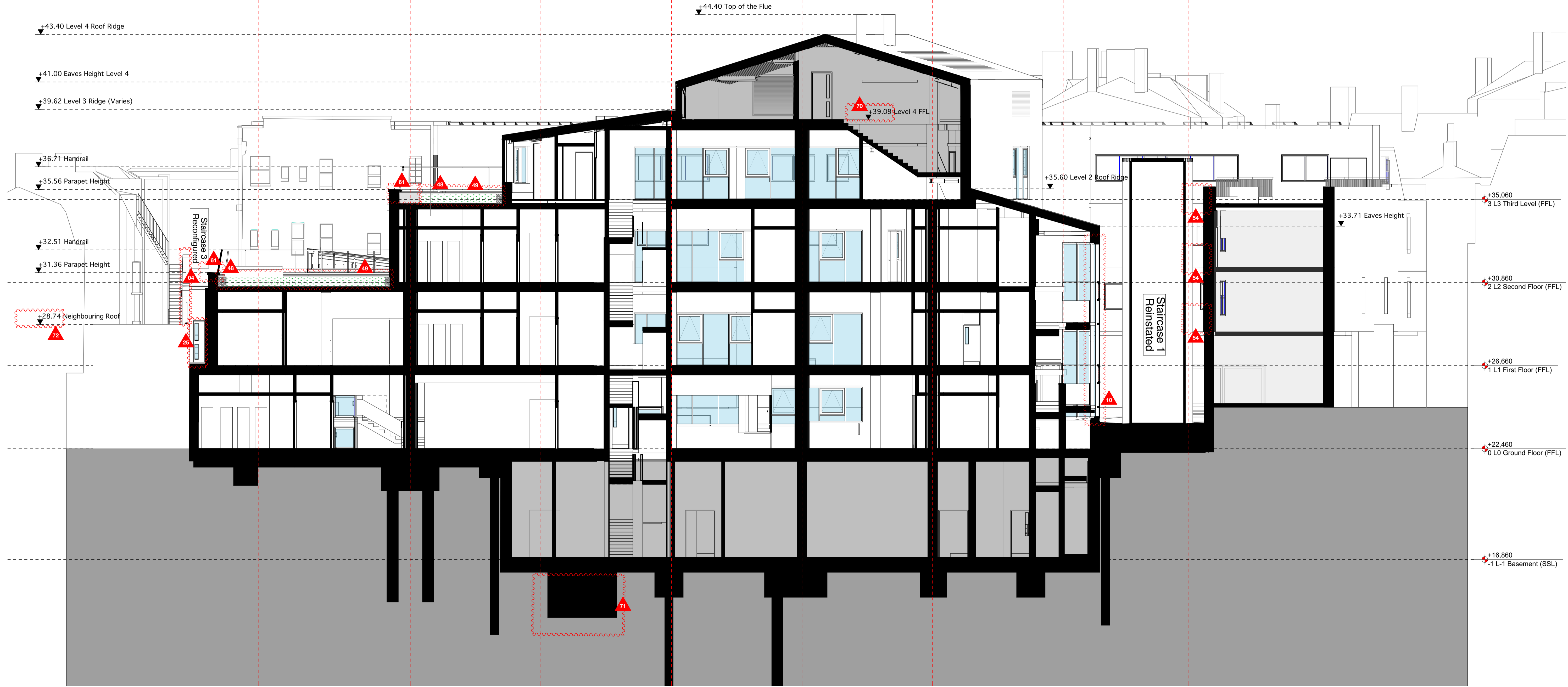


TP2
London School of Hygiene & Tropical Medicine



LEGEND (ALL CHANGES TO ALL LEVELS)

- | | | | | | | | |
|--|---|---|--|---|---|---|---|
| <ul style="list-style-type: none"> 01 Stair 2 omitted, and glazed entrance enclosure enlarged 02 Window added 03 New steps to base of external spiral stair 04 Stair 3 roof and gable end arrangement revised. 05 Level 3 accommodation mansarded 06 Roof light size, height and position adjusted, and smoke vents added. 07 Louvres omitted. 08 Roof light size, height and position adjusted. | <ul style="list-style-type: none"> 09 External ramp adjusted, and railings added. 10 West stair core glazing fenestration adjusted to suit amended stair landing levels. 11 External paving levels in courtyard raised to achieve required paving falls. 12 Low brick plinth added to base of external walls to TP2. 13 Brick plinth added to base of existing buildings within courtyard. 14 New steps and landing outside room G1. 15 Bin store enlarged and repositioned. 16 Gallery passageway to TP2: finishes revised. 17 Gallery passageway; entrance gates design revised. | <ul style="list-style-type: none"> 18 Window on north elevation of TP2 reduced in length. 19 Revised turn-table size and position 20 Entrance ramp gradient and levels adjusted. 21 External levels adjusted 22 TP1 west door ramp omitted 23 Fall restraint added 24 Gates removed 25 Maintenance access door added 26 Parapet revised 27 Roof/wall shape adjusted 28 TP1 reception relocated | <ul style="list-style-type: none"> 29 Revised door design 30 Modifications to windows, doors and facades facing into courtyard. 31 Gate details revised 32 Revised proposal for bike storage replacing existing bike racks in Dairy shed. 33 Gate retained and modified 34 Bike canopy detail revised (typical condition highlighted) 35 Sub-station doors revised 36 Steps adjusted 37 Cladding changed to brass finish 38 Wall mounted planters revised (typical condition highlighted) 39 Steel posts added to boundary wall (typical condition highlighted) | <ul style="list-style-type: none"> 40 Height of glazed entrance roof increased to suit required pitch. 41 Glazed entrance roof and canopy revised 42 New roof guarding to existing flat roof 43 Screening fins and cladding added 44 Louvres added 45 Ramp omitted 46 Door removed and infilled 47 Access hatch adjusted. 48 Depth of green/blue roof build-up adjusted. 49 Blue roof incorporated into green roof and gravel margins added. 50 Cladding build-up adjusted | <ul style="list-style-type: none"> 51 Orientation of brass seams adjusted 52 Roof gutters revised. 53 Means of escape revisited and exit door added to TP1 54 Spiral staircase landings added at each floor 55 Door modified 56 Basement louvers to external metal staircase landings 57 Revised proposal for mean of escape in TP1 58 Revised proposal for window and door 59 Revised proposal for door to be left as current 60 Gate to be removed 61 Capping width adjusted and roof planters shown indicatively. | <ul style="list-style-type: none"> 62 Door to be replaced 63 Revised proposal for the entrance 64 Gates and Entrance door in TP1 to be replaced 65 Existing stair to be demolished 66 Existing window and door to be replaced 67 New reconfiguration for new spiral stair and WC 68 Staircase partially demolished 69 Level adjusted 70 Lift pit adjusted 71 Level updated 72 Red line extended to include South Crescent Mews | <ul style="list-style-type: none"> 73 Red line extended to include new ramp and frontage 74 Ladder added 75 Works to Mews paving/kerbs added 76 Minor adjustment to ridge, and eaves line, (not affecting ridge level noted on consented drawings). |
|--|---|---|--|---|---|---|---|

0m 2 4 6 8 10 20m