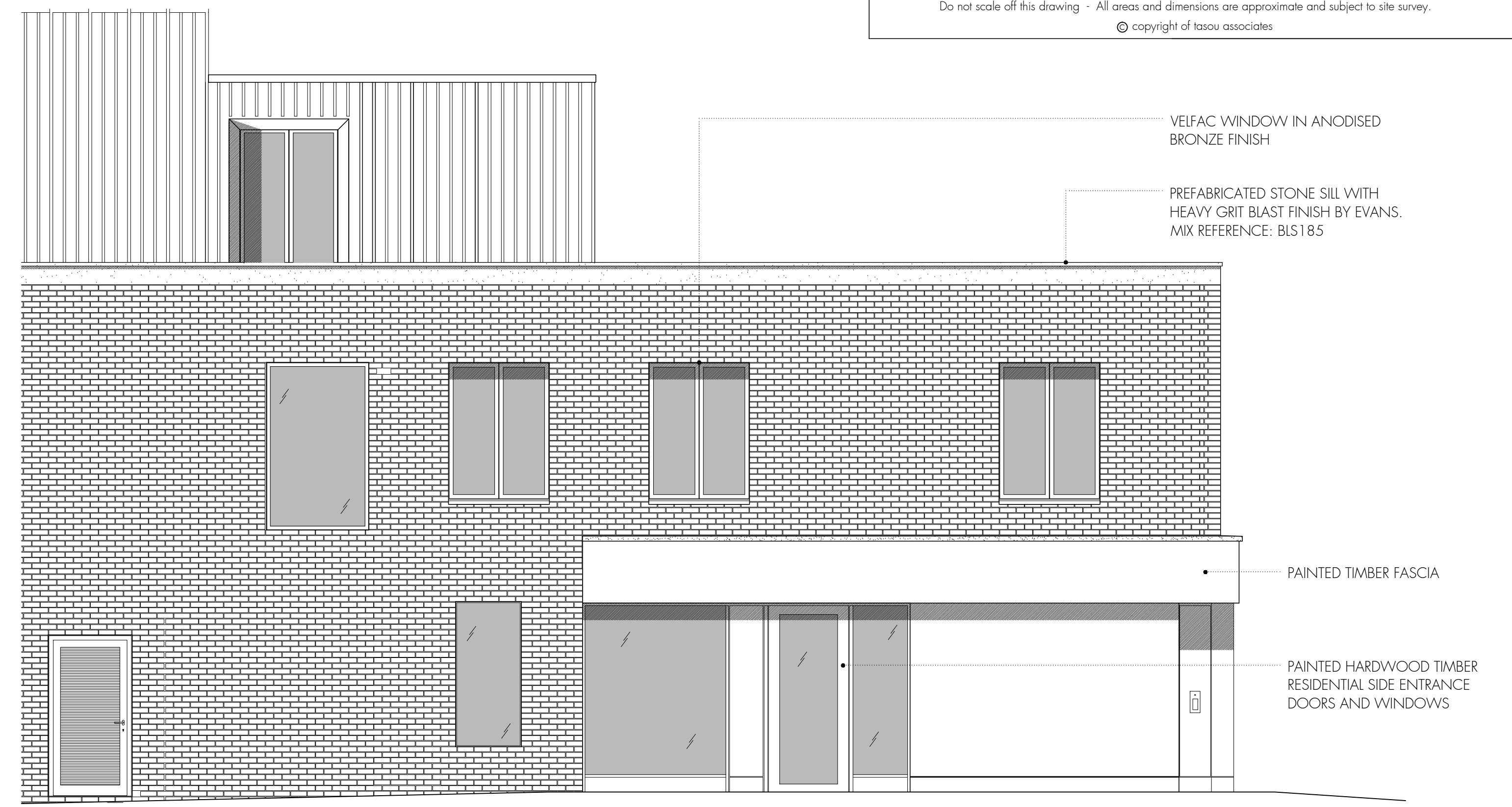
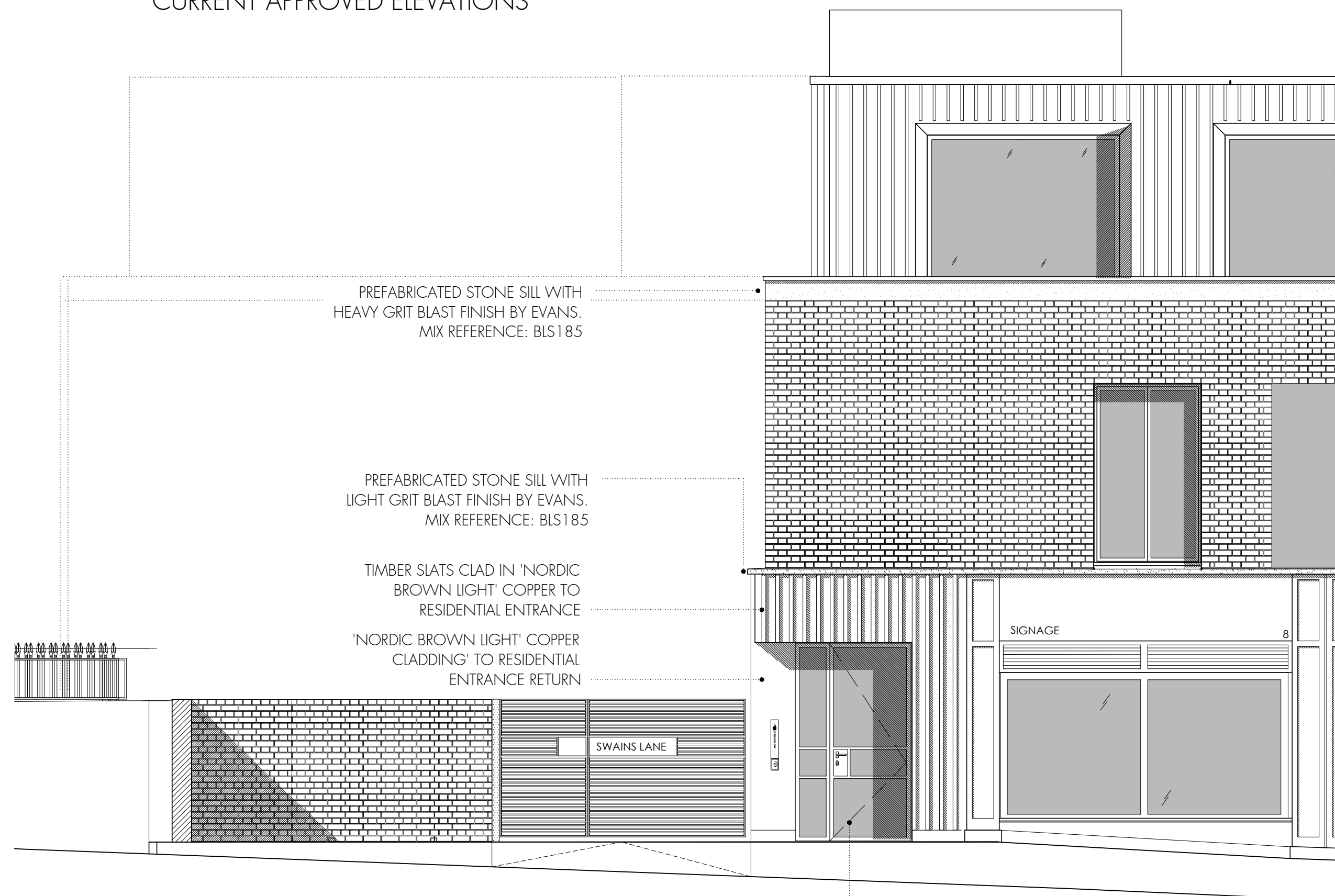




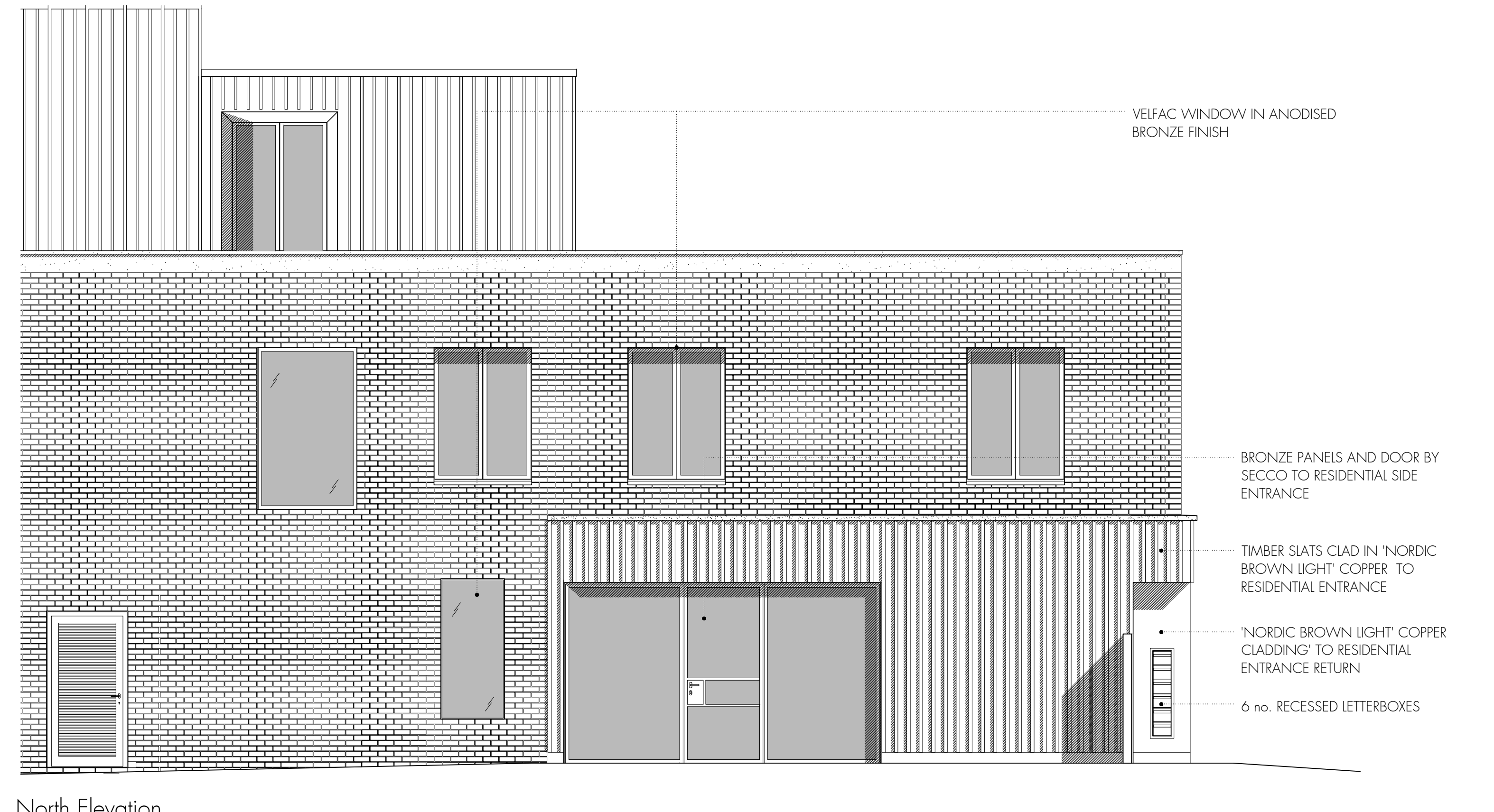
West Elevation
CURRENT APPROVED ELEVATIONS



North Elevation



West Elevation
PROPOSED ELEVATIONS



North Elevation

tasou
associates architects + structural engineers

4 Amwell Street, London. EC1R 1UG T:020 7713 7070 F:020 7713 7071 E:tasou@tasou.co.uk

project	Swains Lane, London, N6 6QX		
drwg title	West Building Residential Entrance Comparisons		
job no.	1658	drwg no.	SK-001
date	Aug. 2018	scale @ A1	1:50
		rev.	A

A 19.11.2018 West residential entrance revised to slats clad in copper with Bronze doors.



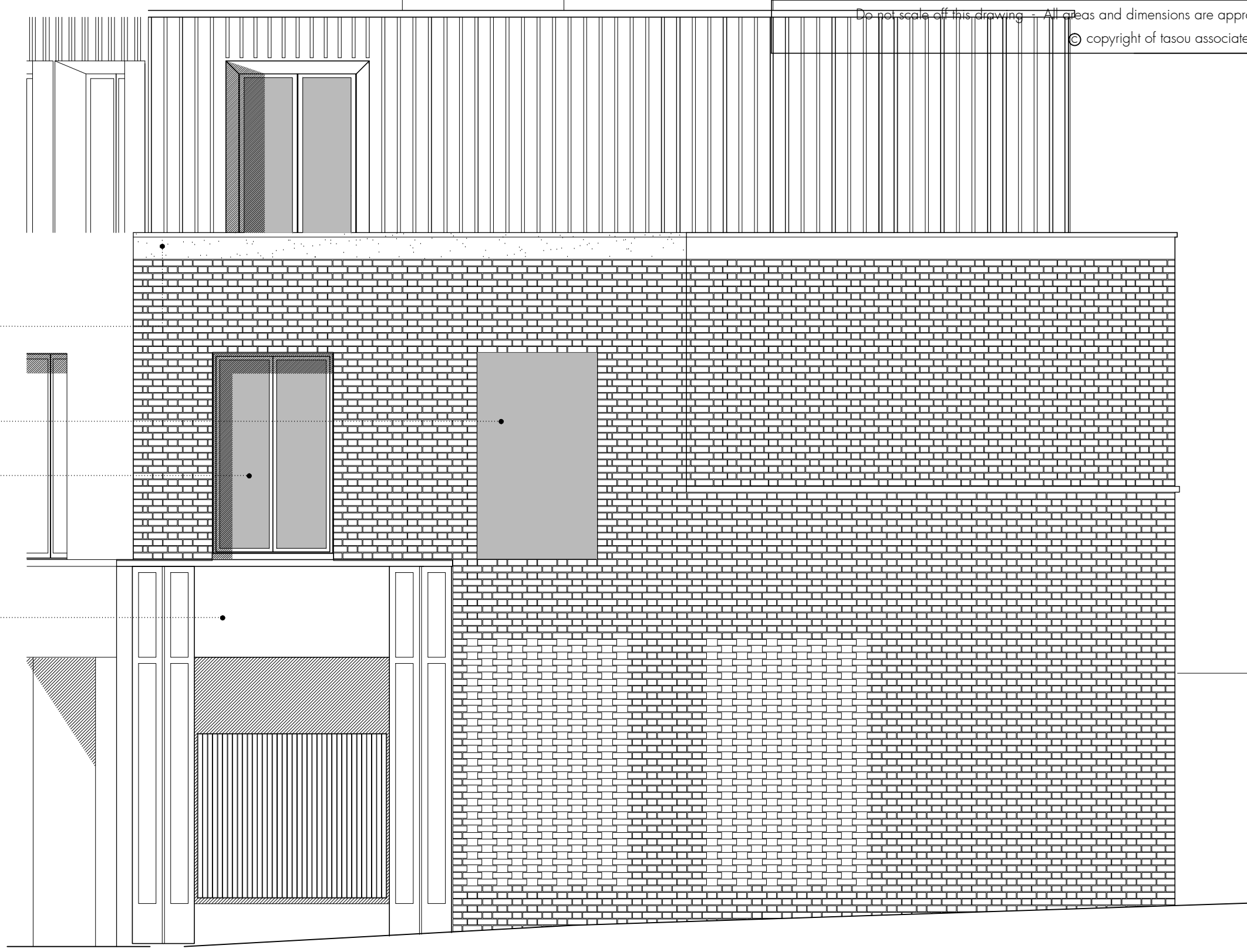
West Elevation
CURRENT APPROVED ELEVATIONS



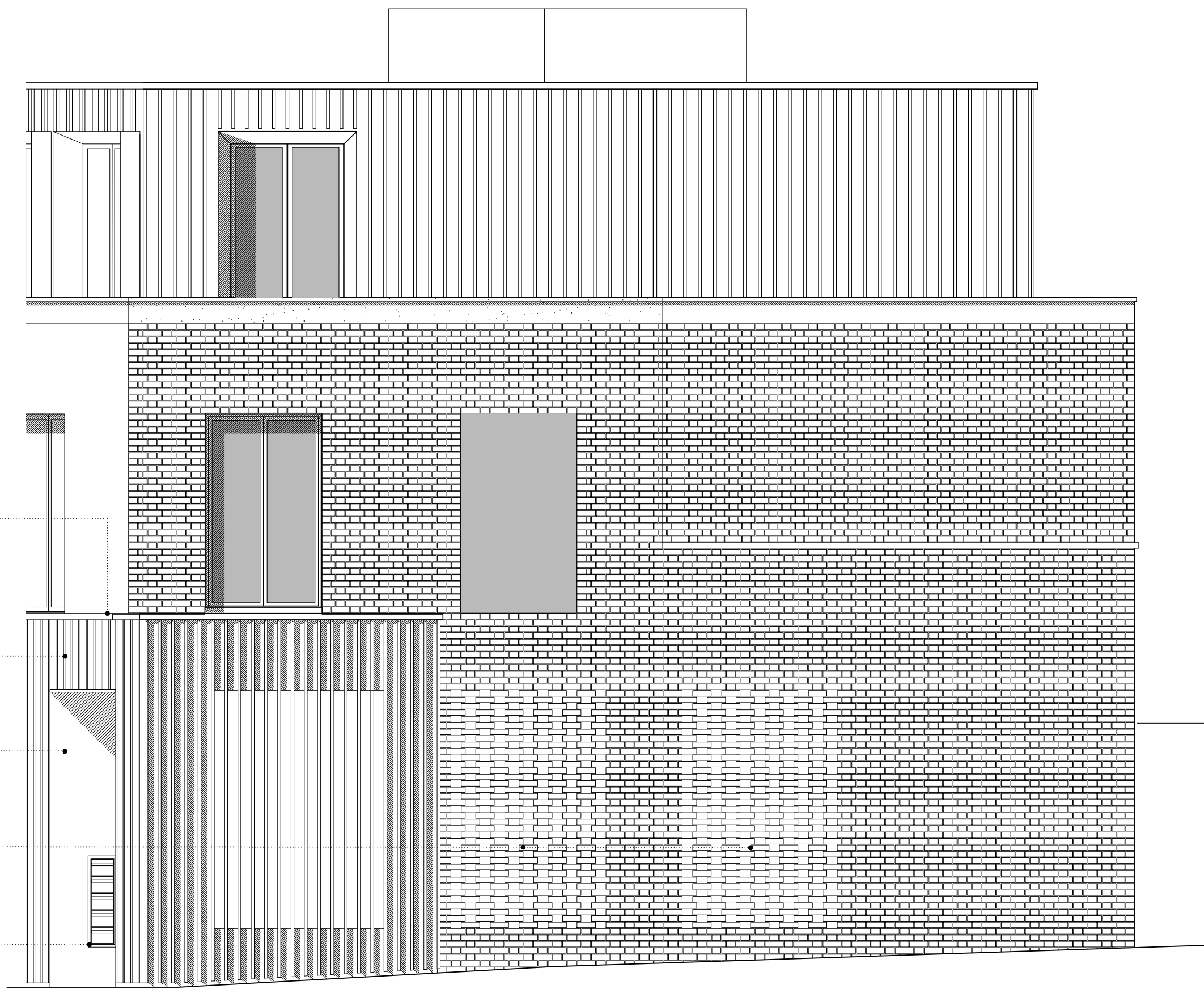
South Elevation
PROPOSED ELEVATIONS

- PREFABRICATED STONE SILL WITH HEAVY GRIT BLAST FINISH BY EVANS. MIX REFERENCE: BLS185
- FIXED FLUSH WINDOW
- RECESSED BRONZE WINDOW BY SECCO
- TIMBER SHOP FRONT DESIGN RETURNED TO CHURCH WALK

- PREFABRICATED STONE SILL WITH LIGHT GRIT BLAST FINISH BY EVANS. MIX REFERENCE: BLS185
- TIMBER SLATS CLAD IN 'NORDIC BROWN LIGHT' COPPER TO RESIDENTIAL ENTRANCE
- 'NORDIC BROWN LIGHT' COPPER CLADDING' TO RESIDENTIAL ENTRANCE RETURN
- 'HIT-AND-MISS' BRICKWORK AND TIMBER SLATS CLAD IN 'NORDIC BROWN LIGHT' COPPER TO SCREEN THE OPENINGS ALONG CHURCH WALK
- 5 no. RECESSED LETTERBOXES
- GATE FINISH TO MATCH ENTRANCE, INFILLED WITH 30 X 65MM WESTERN RED CEDAR BATTENS SECRET FIXED TO FRAME



East Elevation



East Elevation

Do not scale off this drawing. All areas and dimensions are approximate and subject to site survey.
© copyright of tasou associates

tasou
associates
architects + structural engineers

4 Amwell Street, London. EC1R 1UG T:020 7713 7070 F:020 7713 7071 E:tasou@tasou.co.uk

project	Swains Lane, London, N6 6QX		
drwg title	East Building Residential Entrance Comparisons		
job no.	1658	drwg no.	SK-002
date	Oct. 2018	scale @ A1	1:50
		rev.	A

A 19.11.2018 Annotation to stone coping corrected.