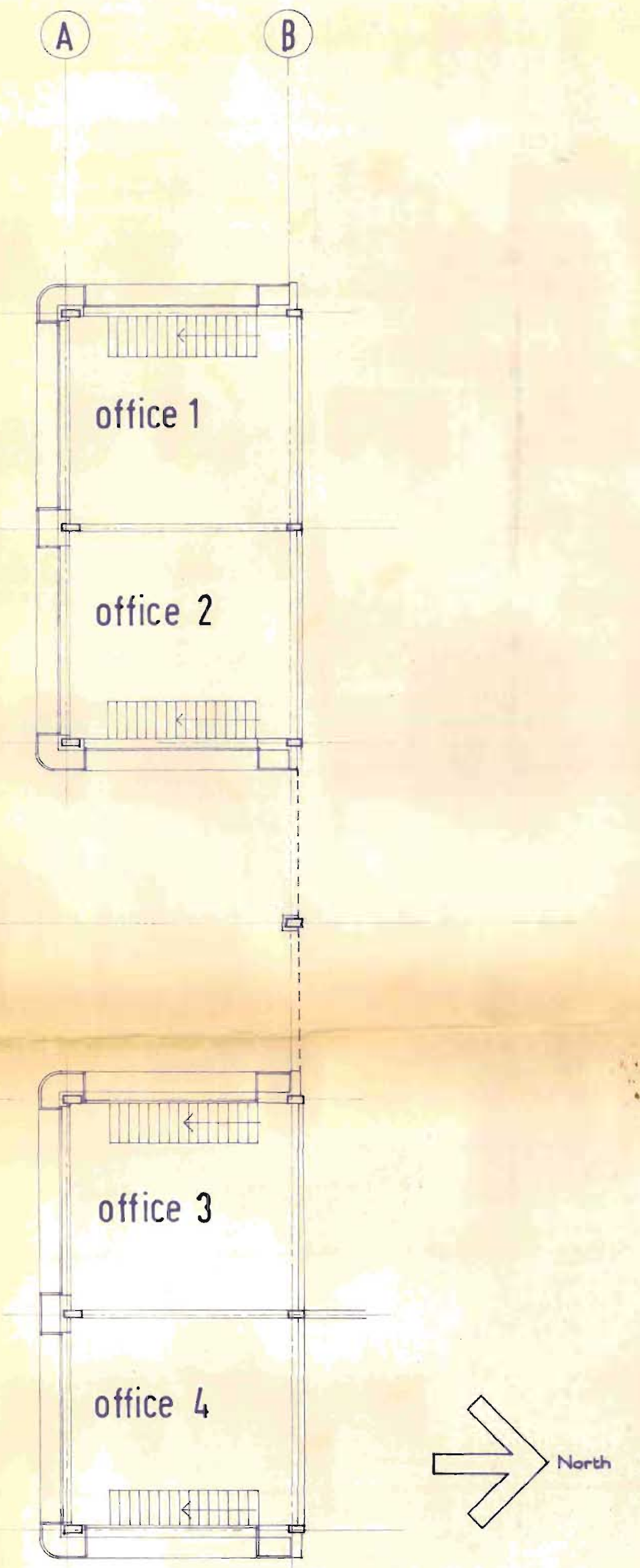
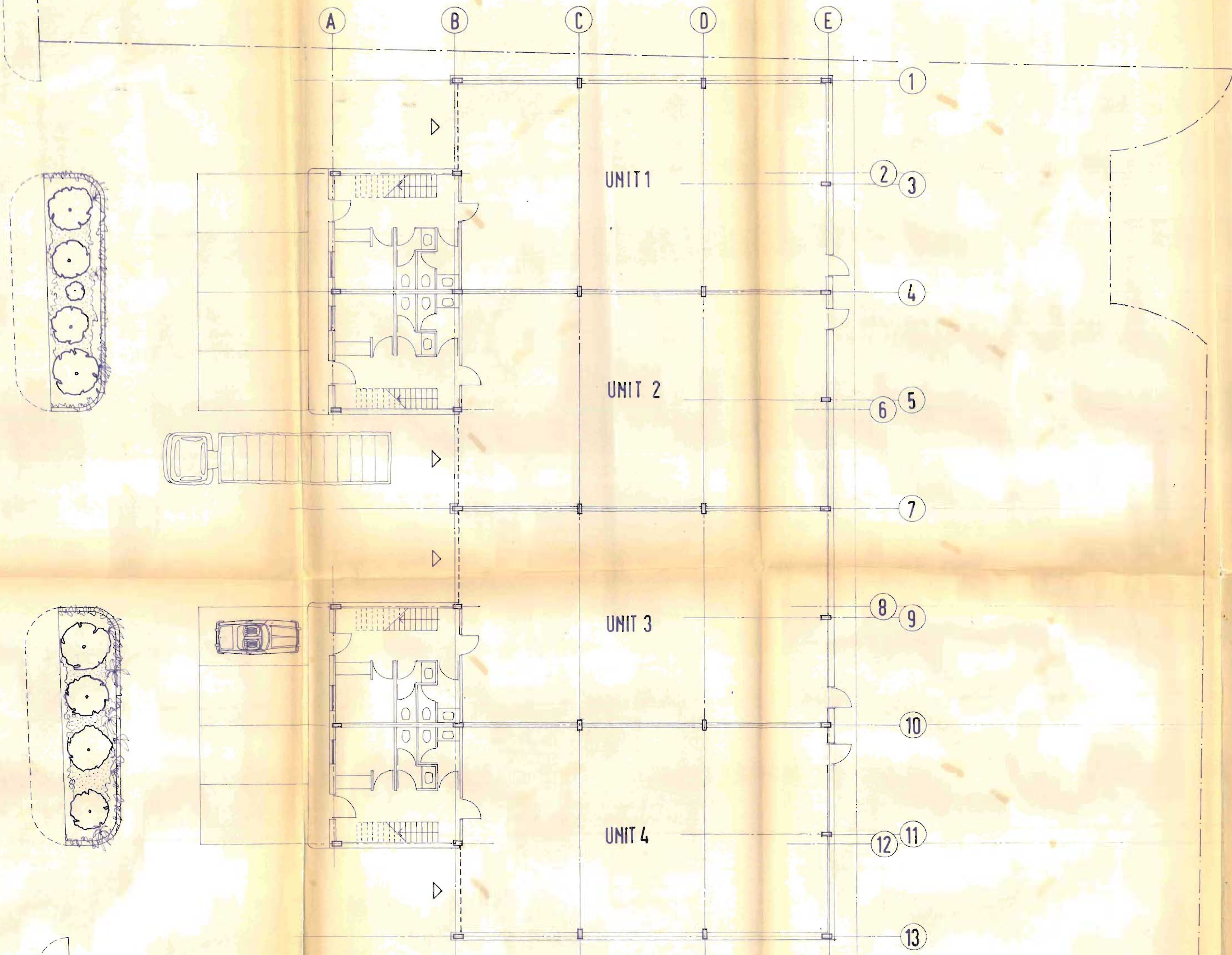


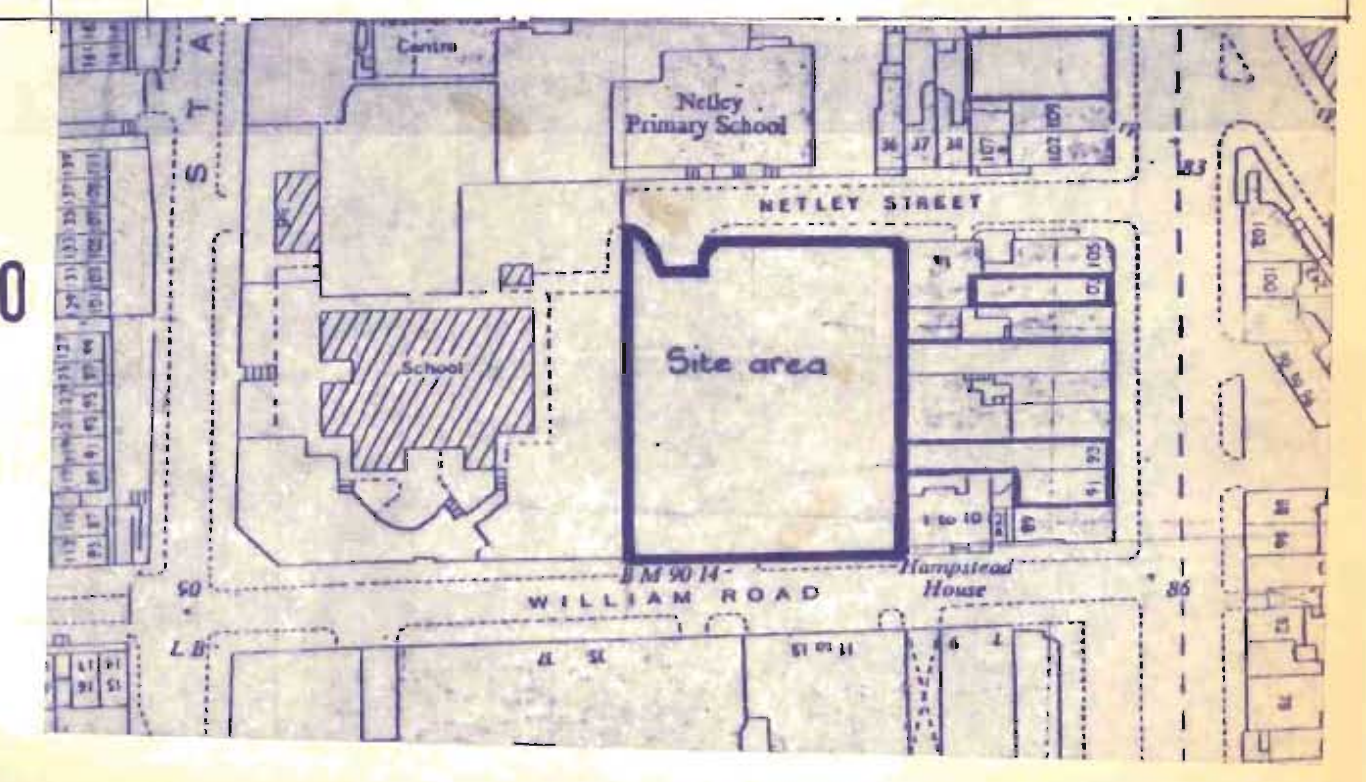
WILLIAM ROAD



FIRST FLOOR PLAN  
 CT 1/12/9/B/3232/

Schedule of areas		
4 No. Industrial units of 1872.5 sq.ft.	7490	
4 No. Offices of 683.75 sq.ft.	2735	
<b>Total</b>	<b>10225 sq.ft.</b>	

Location  
 Plan 1:1250



WILLIAM ROAD AND  
 NETLEY STREET  
 N.W.1.

Date **4.81**  
 Drawn by **R.B.**  
 Checked

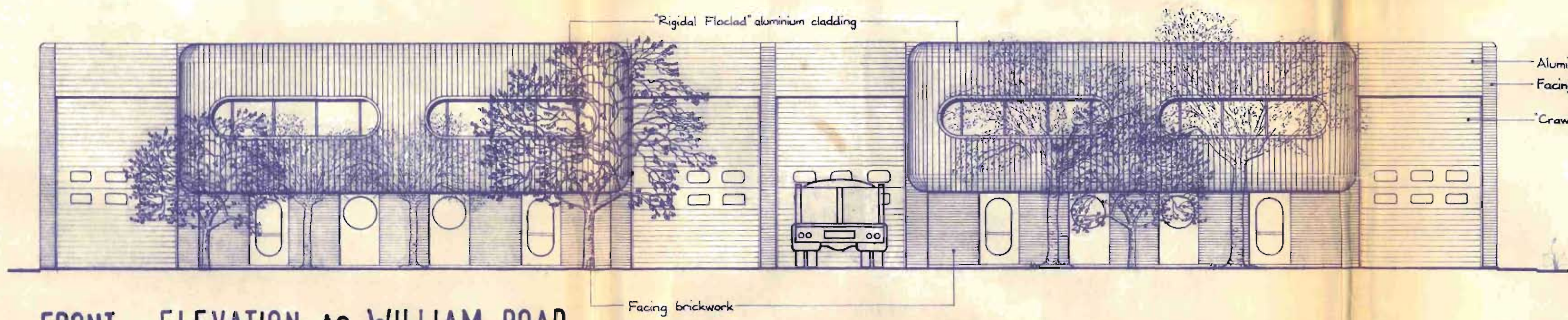
PLAN *scheme B.* Scale **1:100**

**Gf** GROGAN ASSOCIATES  
 Consultants

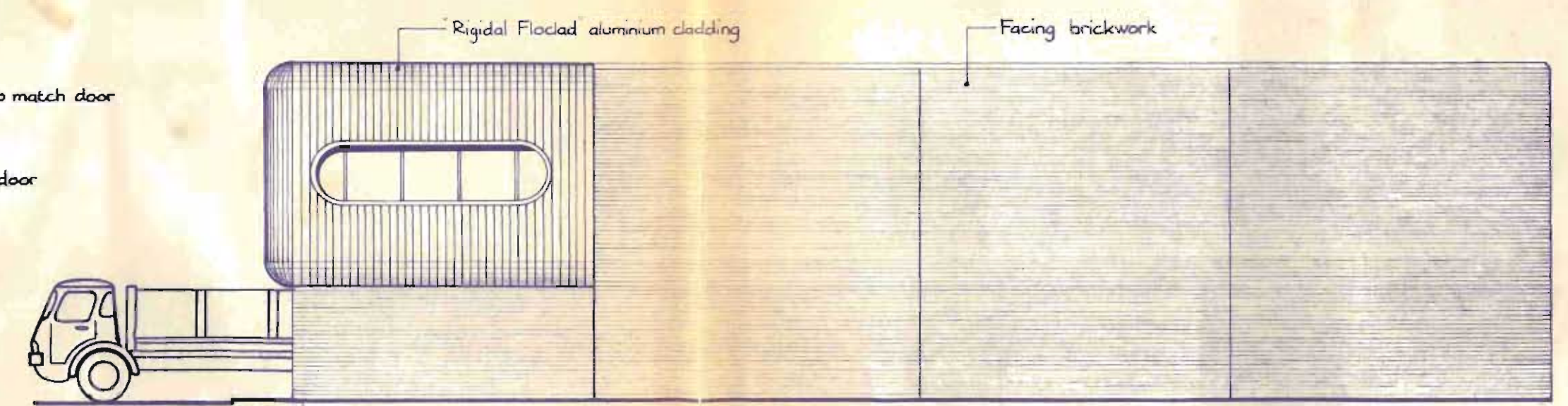
93:5  
 Job No. Draw No.

3a George Street Richmond Surrey TW9 1JY  
 01940 0106 (4lines)

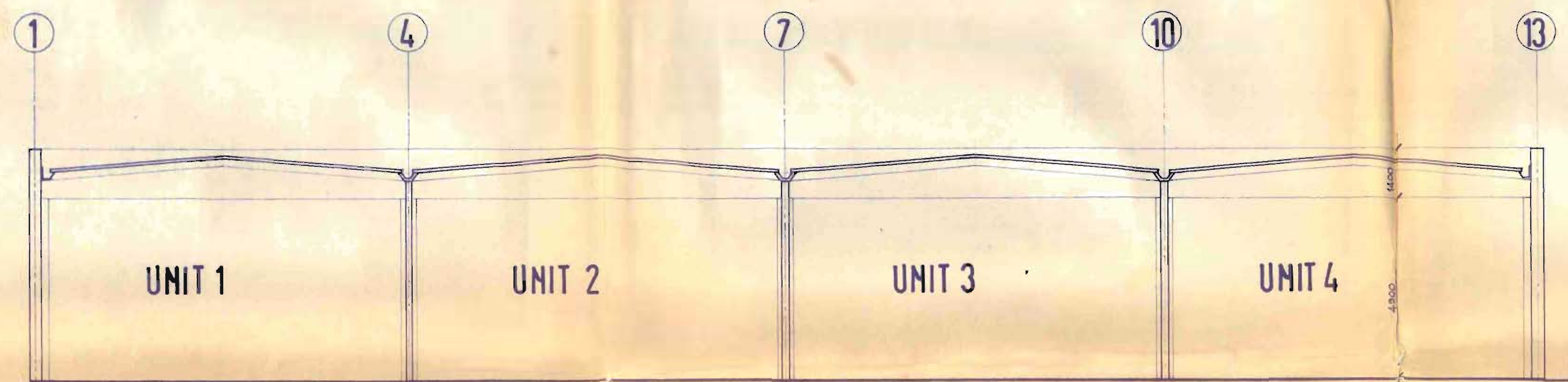




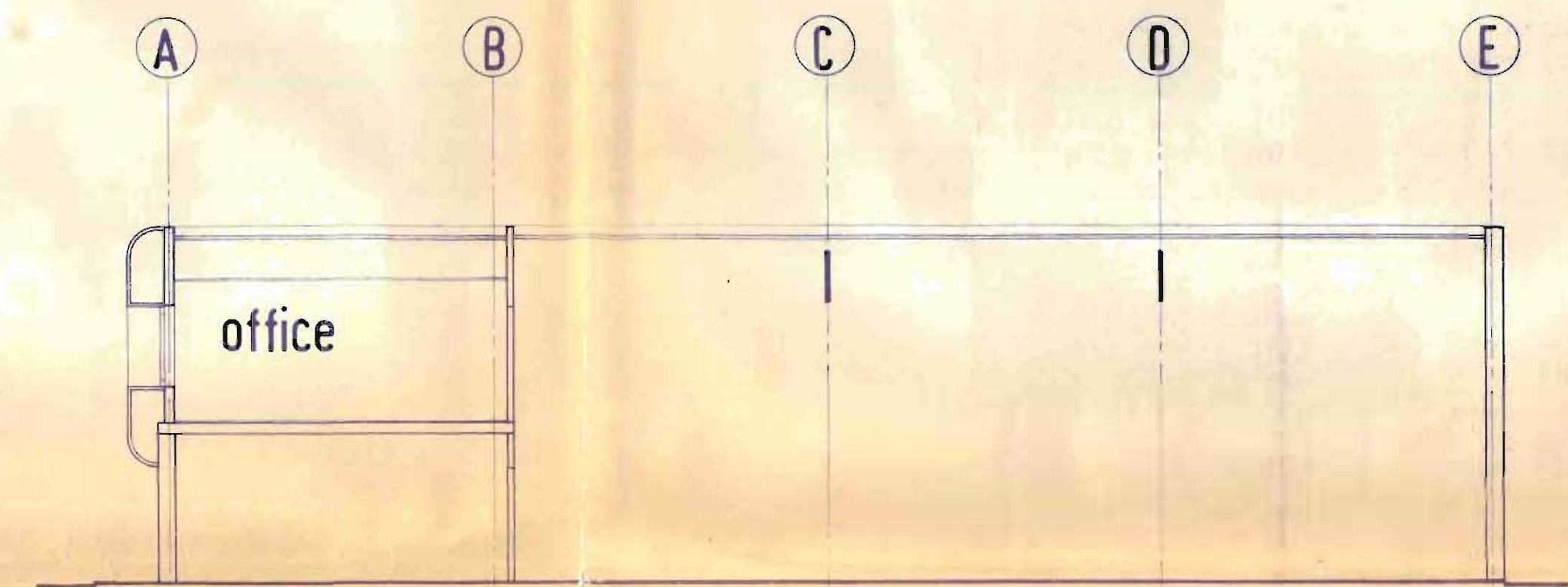
FRONT ELEVATION to WILLIAM ROAD



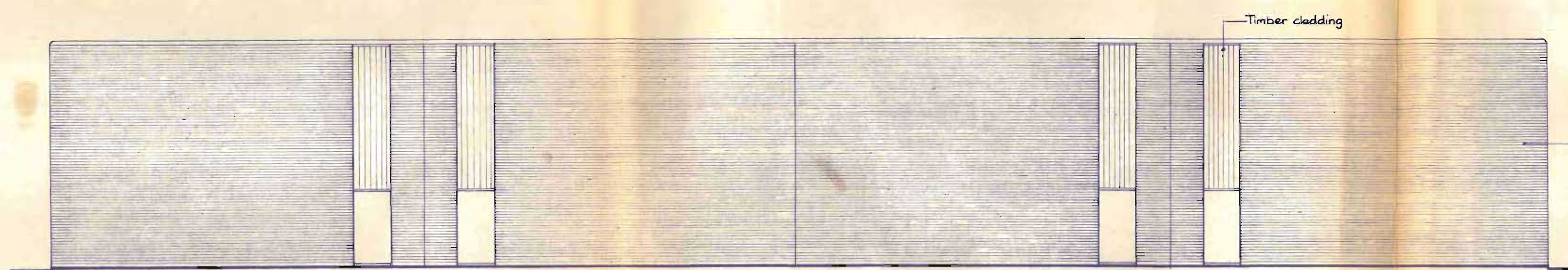
EAST ELEVATION



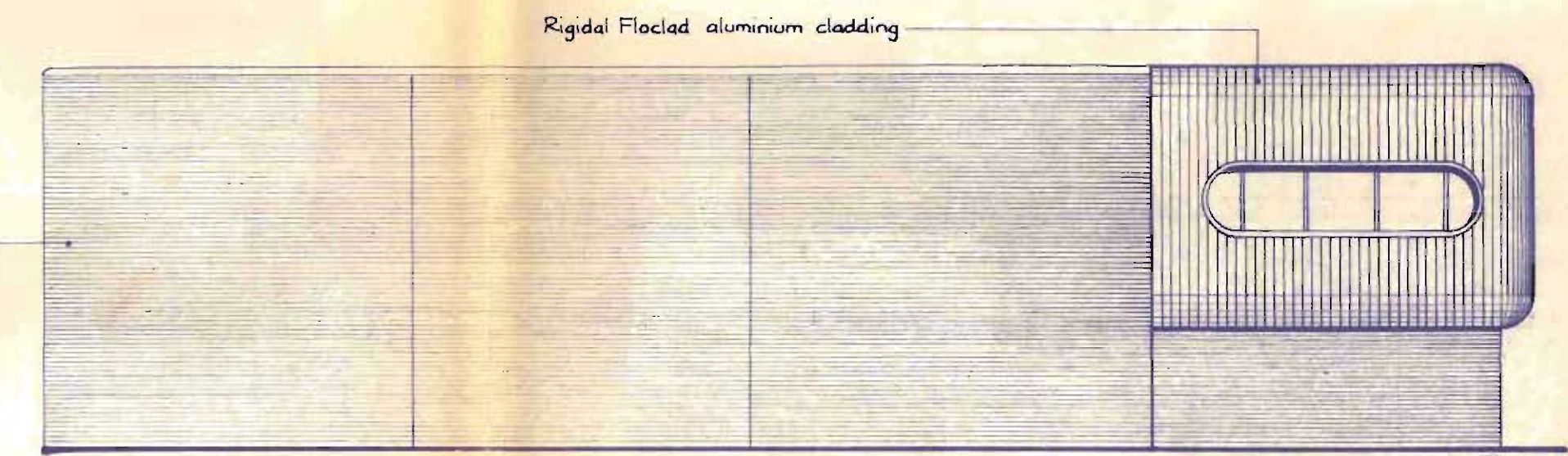
SECTION A A



SECTION B B



NORTH ELEVATION



WEST ELEVATION

CTP/42/9/B/32321

WILLIAM ROAD AND NETLEY STREET N.W.1  
 LONDON BOROUGH OF CAMDEN  
 TOWN AND COUNTRY PLANNING ACTS  
 14 JUL 1981  
 PLANS APPROVED  
 ON BEHALF OF THE COUNCIL

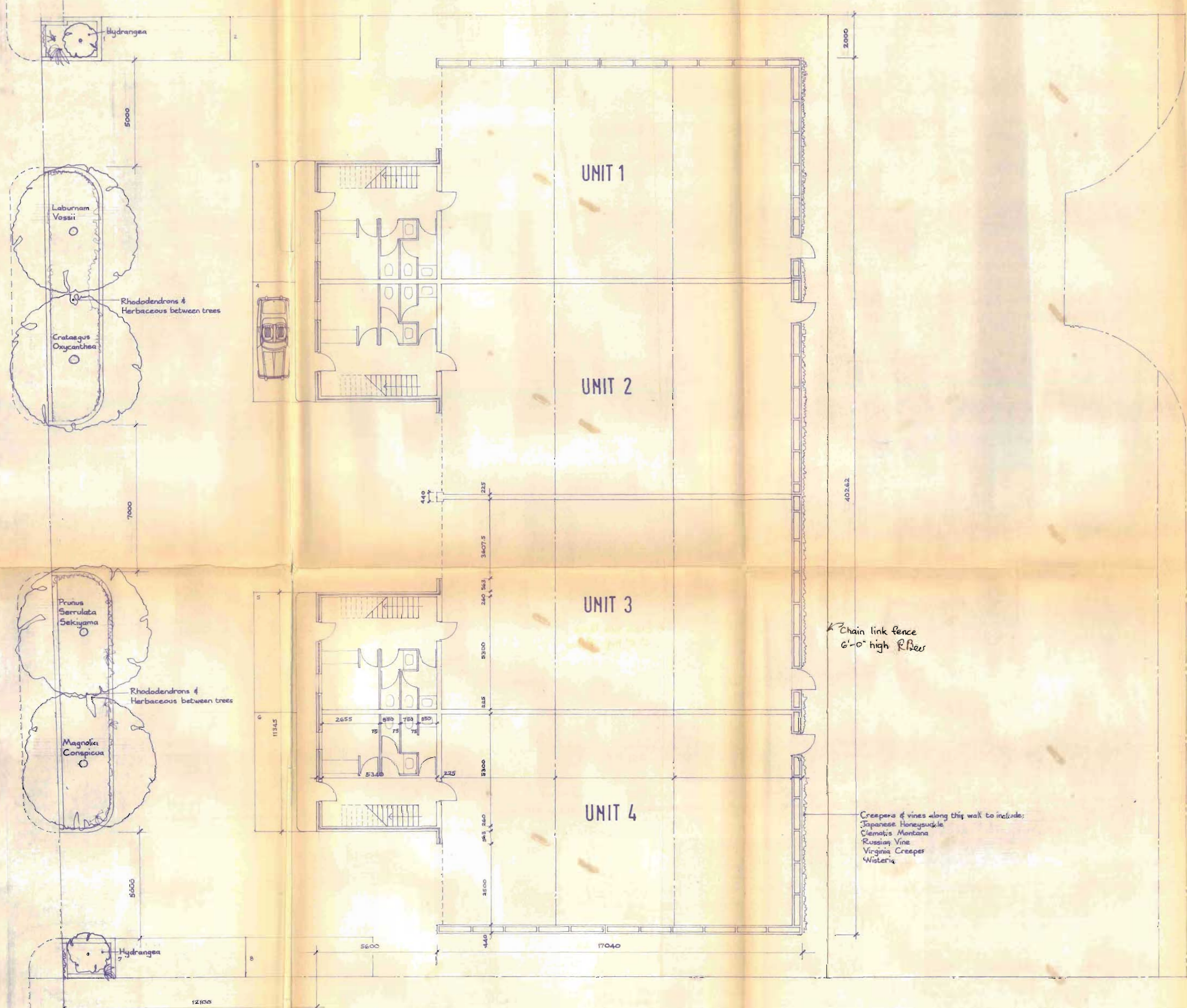
DATE 4.81  
 DRAWN BY RB  
 SCALE 1:100

GROGAN ASSOCIATES  
 Consultants  
 3a George Street Richmond Surrey TW9 1JY  
 01-940 0106 (4 lines)

GA93 8  
 Job No. Drwg No.



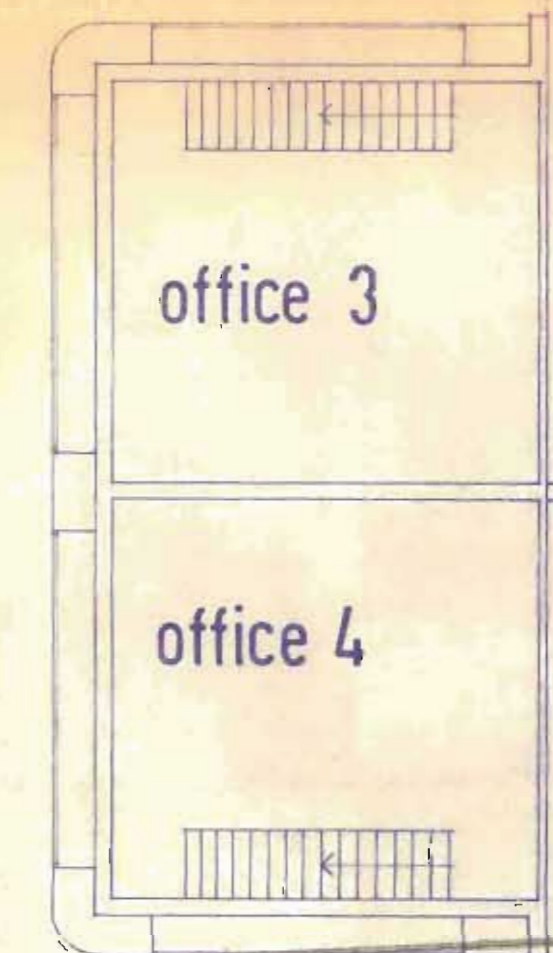
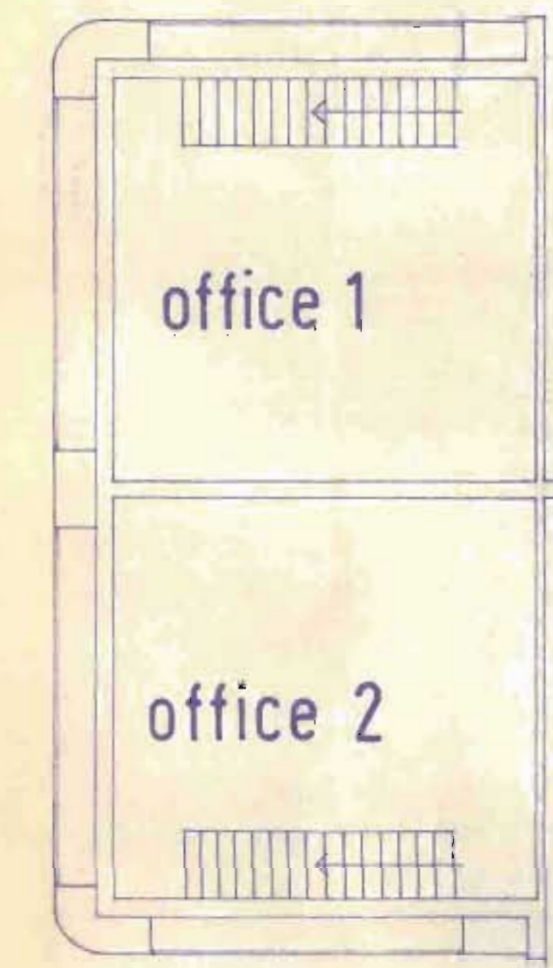
WILLIAM ROAD



Schedule of areas	
Industrial/warehouse	7383 sq ft
Ancillary offices	2735 sq ft
<b>Total Area</b>	<b>10118 sq ft</b>

Location plan  
1:1250

Site Area



PLANNING AND COMMUNICATIONS  
DEPARTMENT  
CAMDEN  
16 JUN 1981

CTP/12/9/B/32321(R2)  
FIRST FLOOR PLAN

C. Building re-sited. Planting shown	6.81	R.B.
B. Schedule of areas shown	5.81	R.B.
A. Re-drawn	5.81	R.B.

WILLIAM ROAD AND  
NETLEY STREET  
Date 5.81  
R.B.

LONDON BOROUGH OF CAMDEN  
TOWN AND COUNTRY PLANNING ACTS  
14 JUL 1981  
Checked  
PLANS APPROVED  
ON BEHALF OF THE COUNCIL  
1:100

Gf Grogan Associates  
Consultants  
3a George Street, Richmond, Surrey TW9 1JY  
01940 01064 (lines)

GA93:7  
Job No. Drawg No.  
A B C