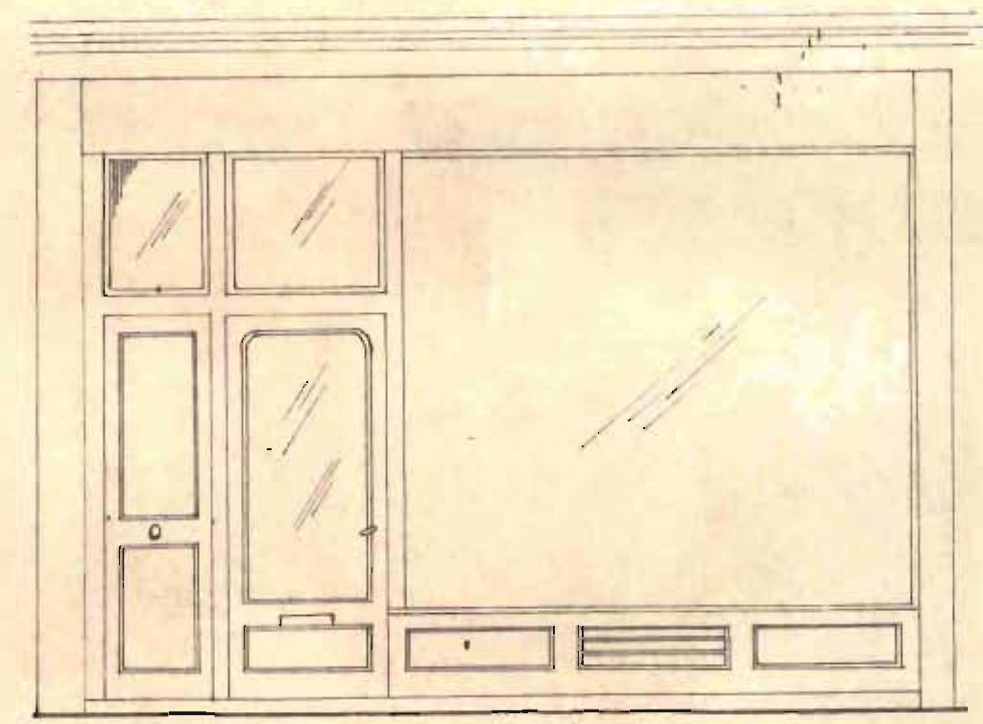
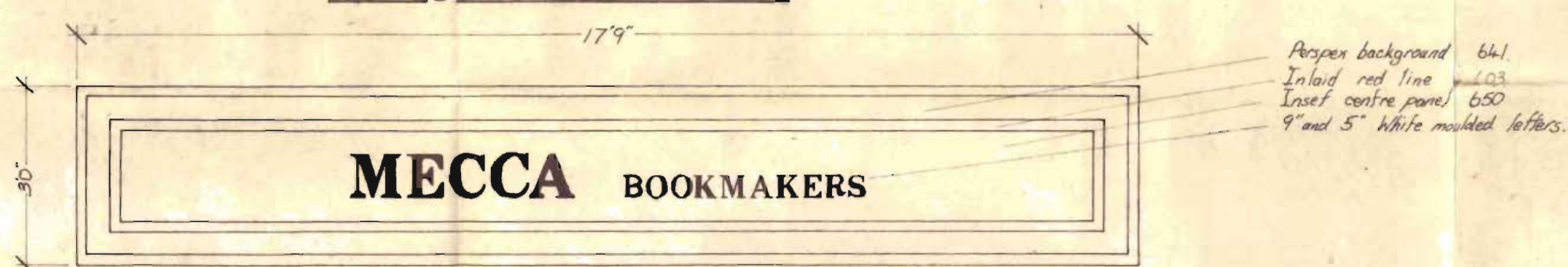
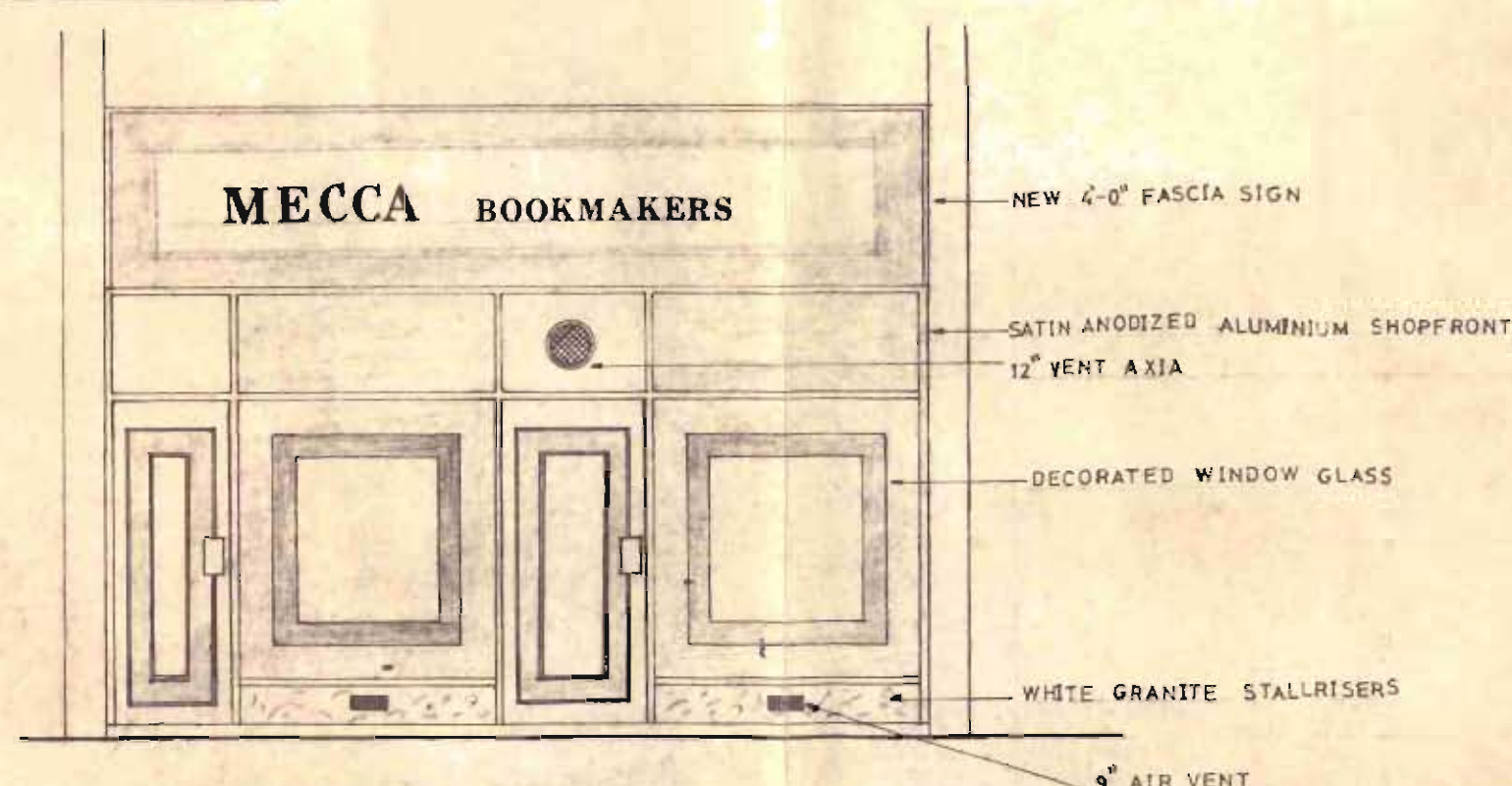
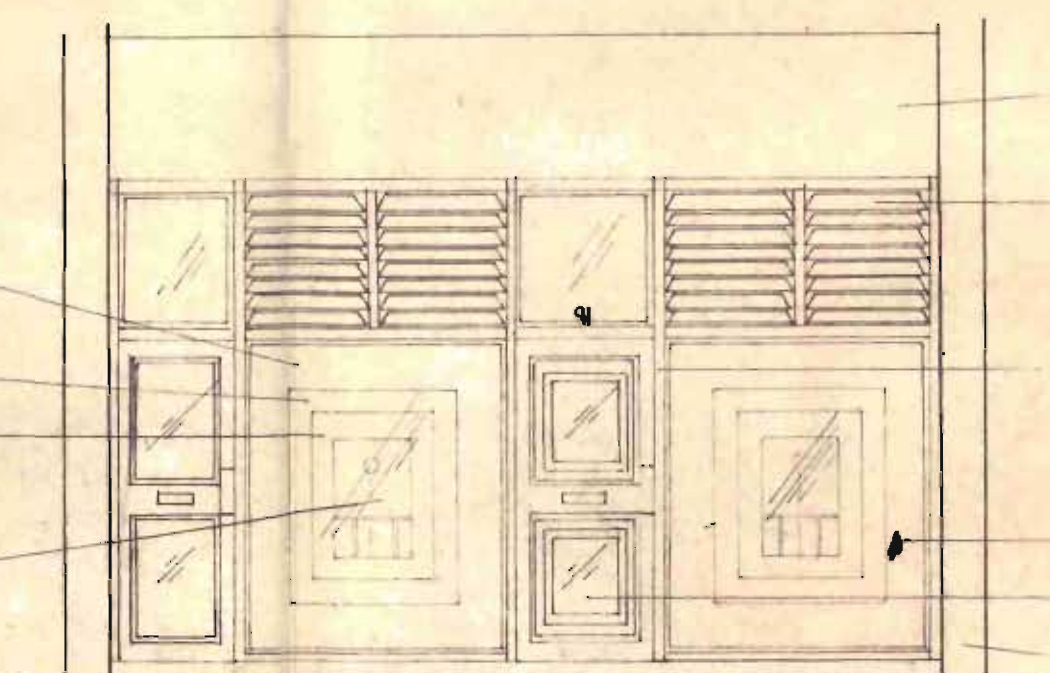


enlargement of fascia. SCALE 1/2 to 1/10"



existing front elevation

Glass painted internally with Dark Green band Dulux "Hollybush"  
 Perspex 650 (dark green)  
 Perspex 403 (red)  
 Background panel Perspex 650 with "Winning Post" motif

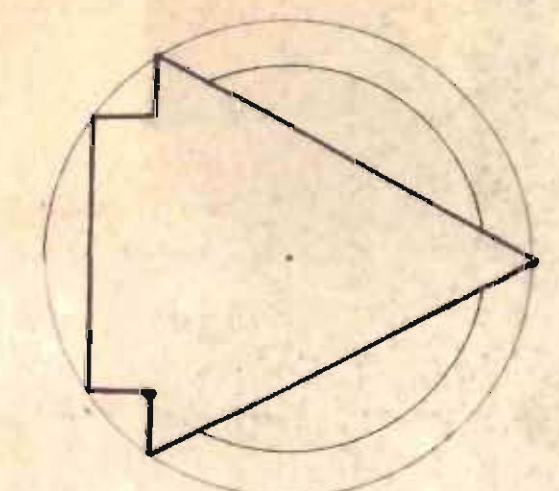


proposed shopfront elevation

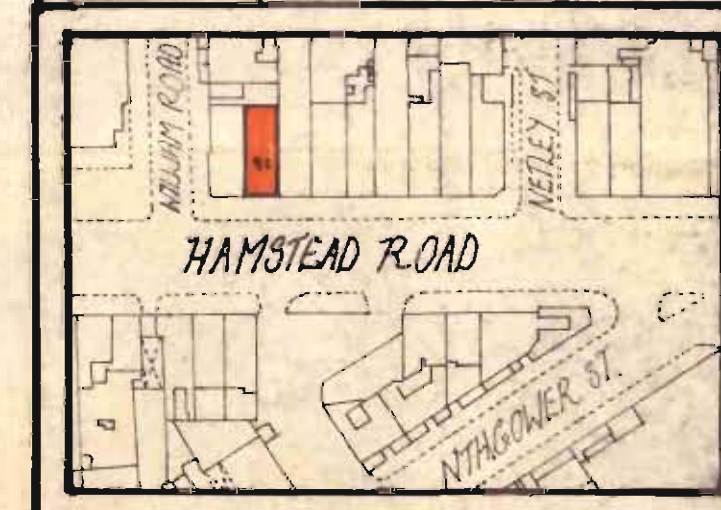
Notes and Revisions

- 1) recessed modular lighting fitting
- 2) dimplex heater
- 3) globe light fitting
- 4) recessed spotlight
- 5) light switch
- 6) 13 amp socket
- 7) 13 amp twin socket outlet
- 8) emergency lighting
- 9) telephone

CTP/114 9/2/26071



block plan 1:1250

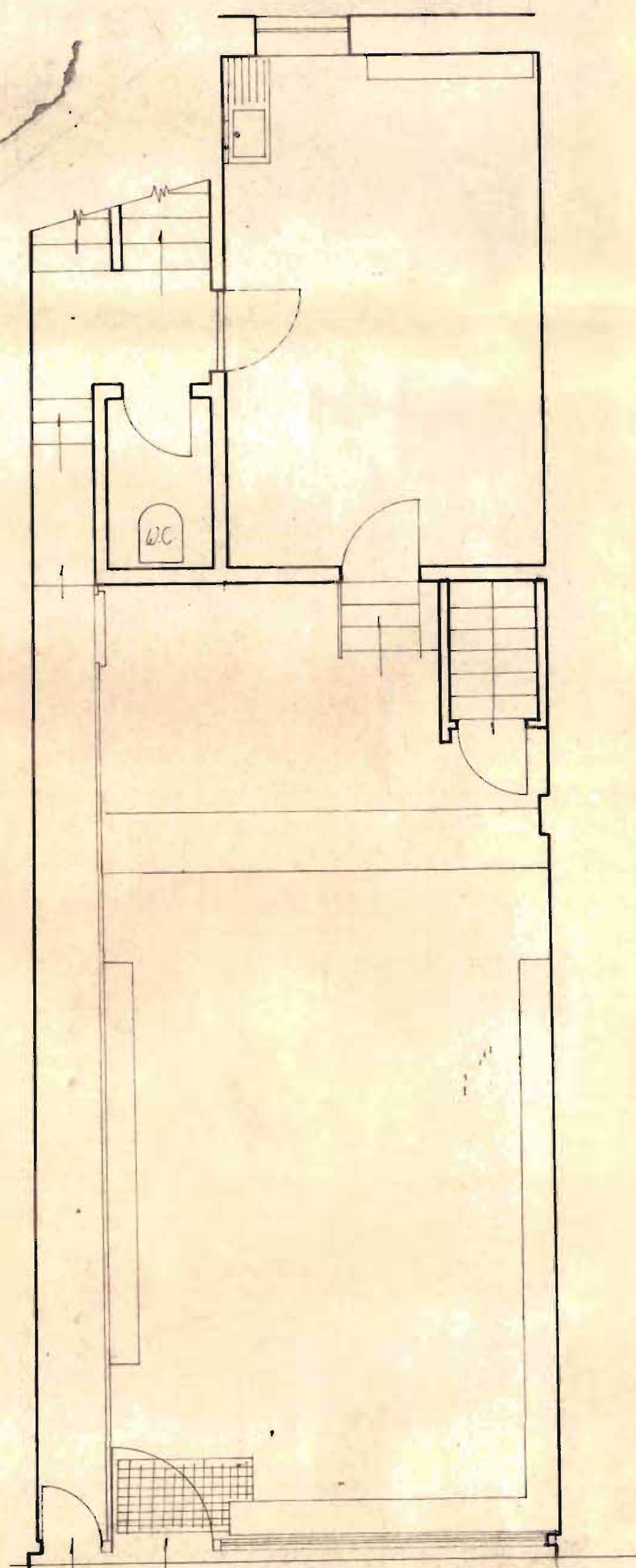


Betting Office .at,  
 91, HAMPSTEAD RD,  
 N.W.1.  
 for, Mecca  
 Bookmakers Ltd.

Date 10<sup>th</sup> October 1973  
 Scale 1-50 Metres  
 Drawing No. BO-HR-1-73

Mecca Bookmakers Ltd.,  
 Estates Department,  
 70-74, City Road,  
 London, E.C.1.

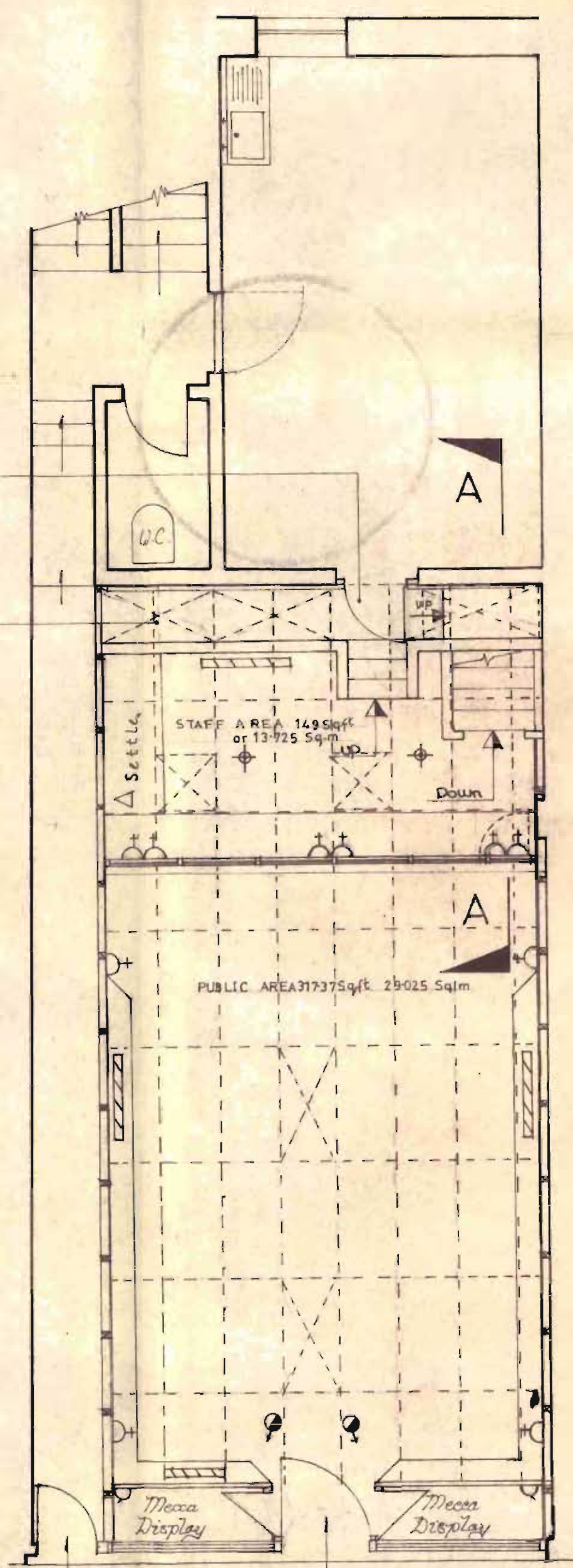
LONDON BOROUGH OF CAMDEN  
 TOWN AND COUNTRY PLANNING ACTS  
 23 MAY 1978  
 PLANS APPROVED  
 ON BEHALF OF THE COUNCIL



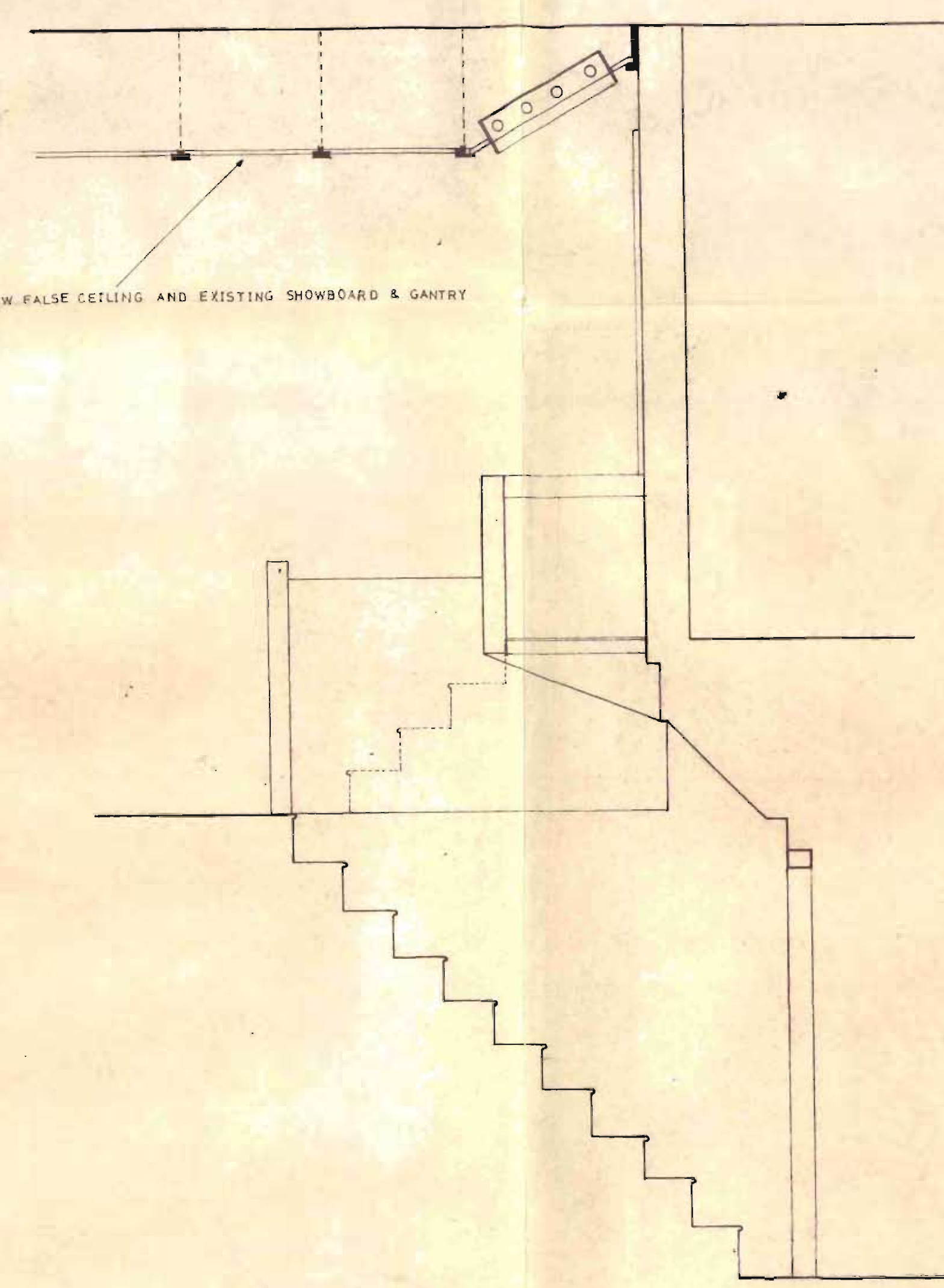
existing ground floor plan

Door made the same width as  
 section of Showboard.

Showboard & Gantry



proposed ground floor plan



section A-A

*J. Hindle 17/1/78*