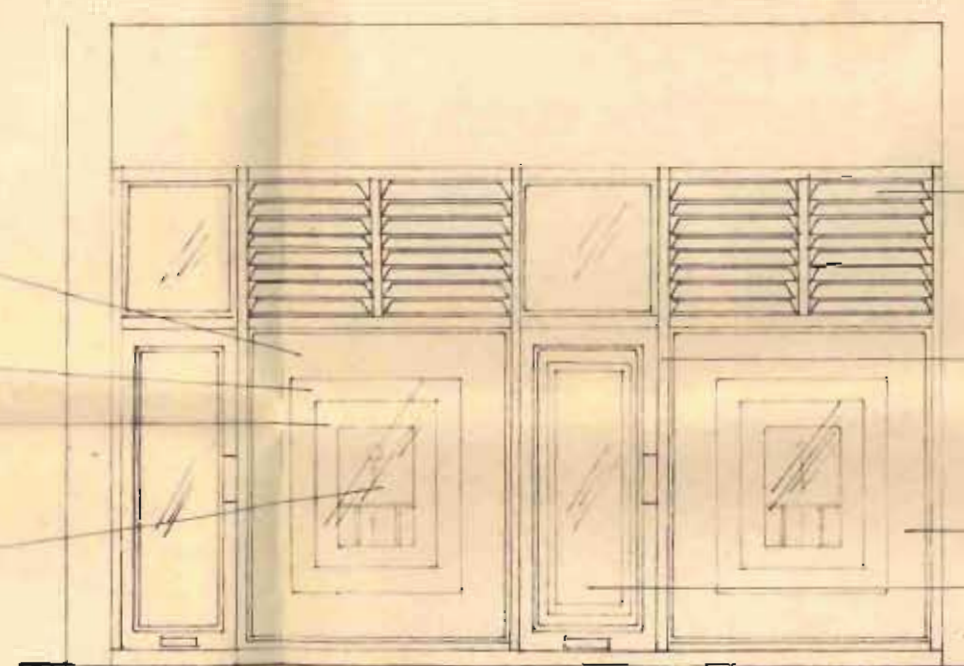




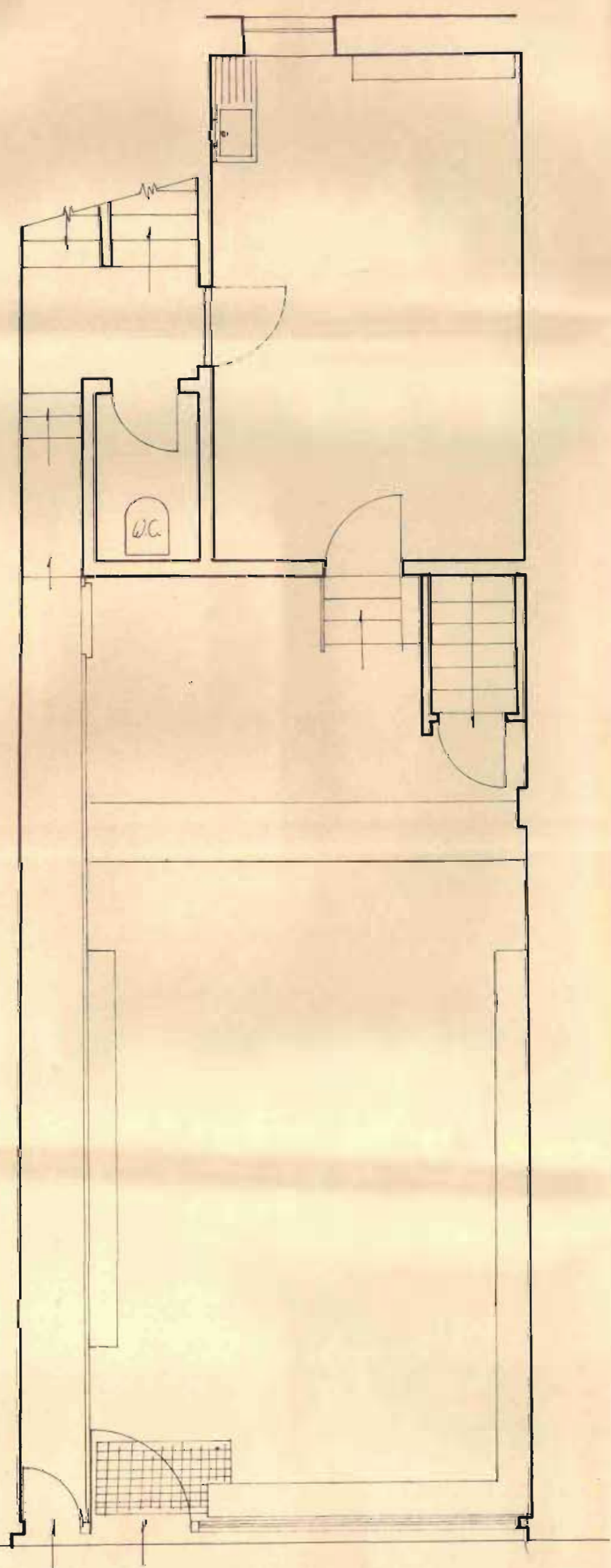
existing front elevation

Glass painted internally with Dark Green band
Dulux "Hollybush"
Perspex 650 (dark green)
Perspex 403 (red)
Background panel Perspex 650 with
"Winning Post" motif

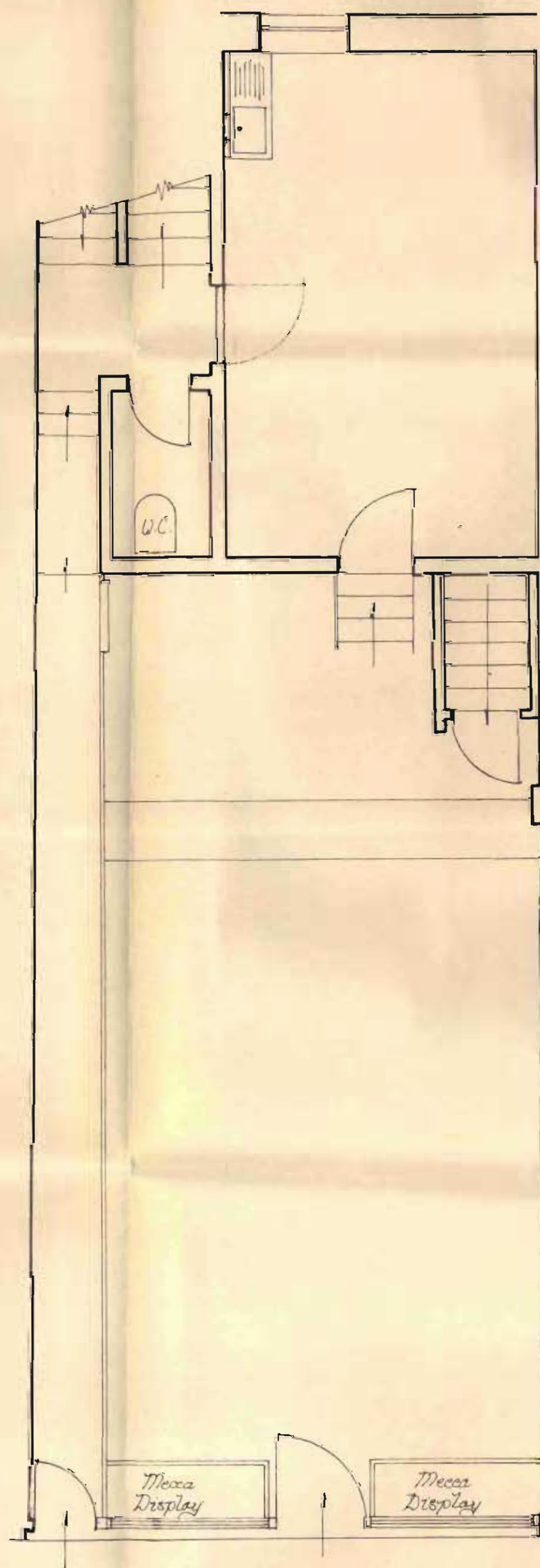


proposed front elevation

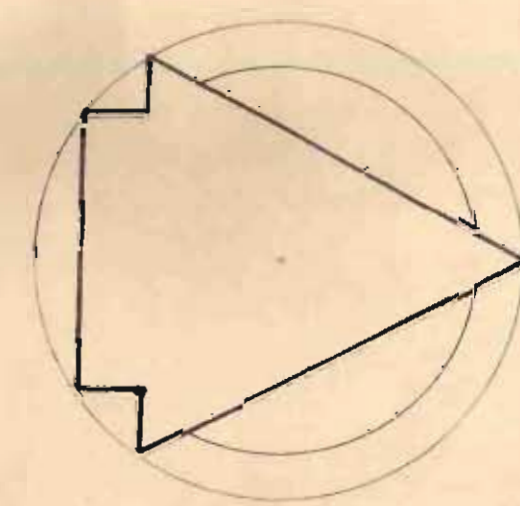
Panels of "Naco" louvers
Shopfront to be constructed in 100x45mm
extruded salu anodized aluminium box sections
as manufactured by "Aluminium Systems Ltd"
securely screwed to existing frame
6mm clear glass with display behind
Doors obscured with stippled green panel & 1/4" dark green & red band
between white marble panels



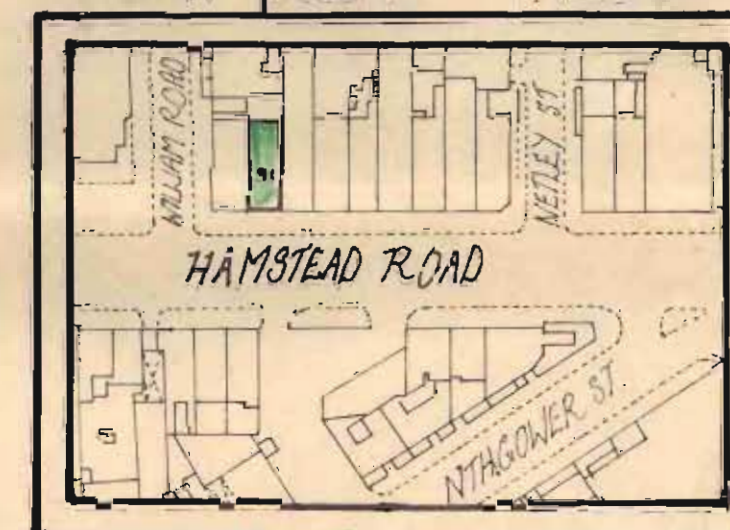
existing ground floor plan



proposed ground floor plan



block plan 1:1250



R. L. House 12/10/73

LONDON BOROUGH OF CAMDEN
PLANS APPROVED
13 NOV 1973
ON BEHALF OF THE COUNCIL

Good Copy

Betting Office at,
91, HAMPSTEAD RD,
N.W.1.
for, Mecca
Bookmakers Ltd.

Date : 10th October 1973
Scale : 1:50 Metre
Drawing No. BO-HR-173

Mecca Bookmakers Ltd,
Estates Department,
70-74, City Road,
London, E.C.1.

GTP/W2/a/2/17572.