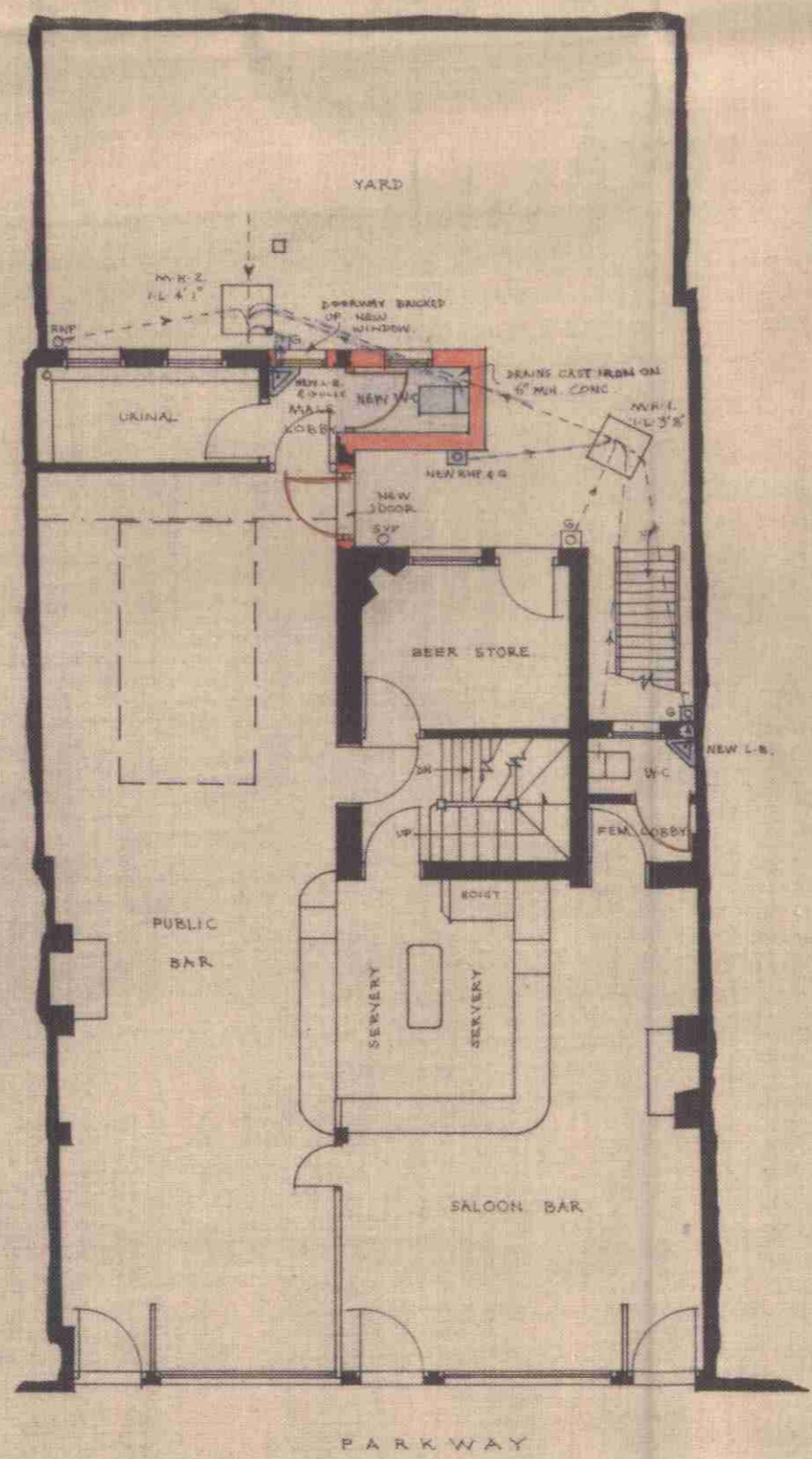
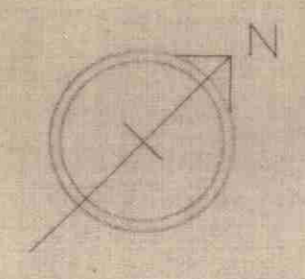
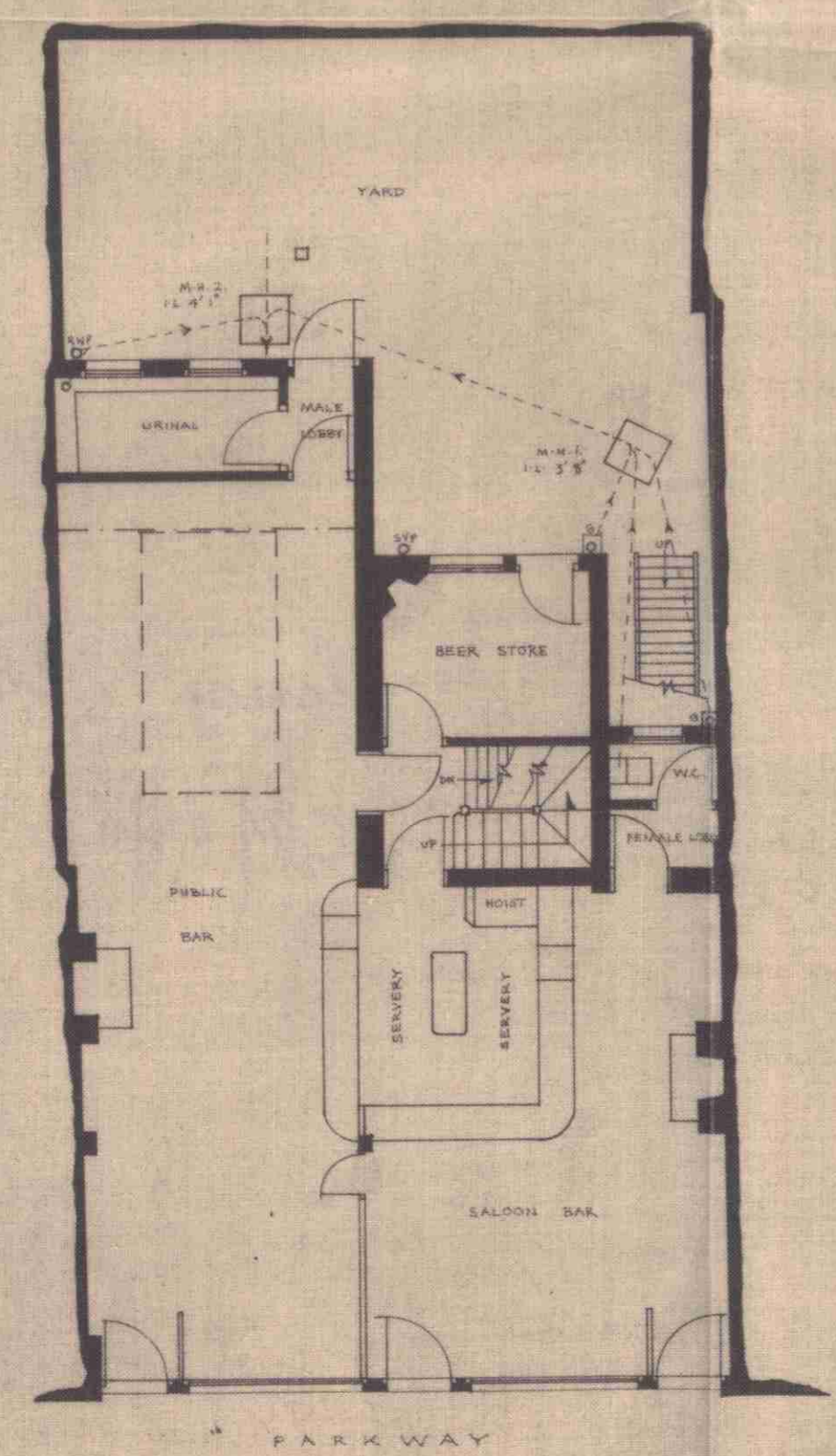
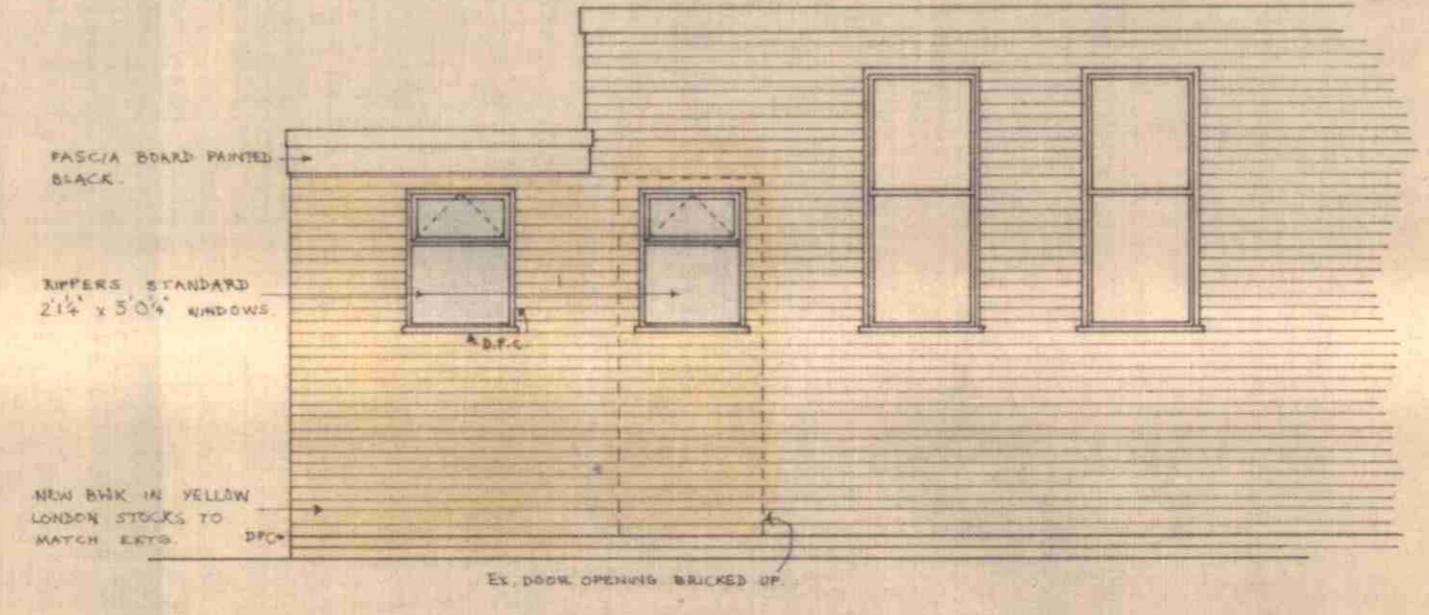
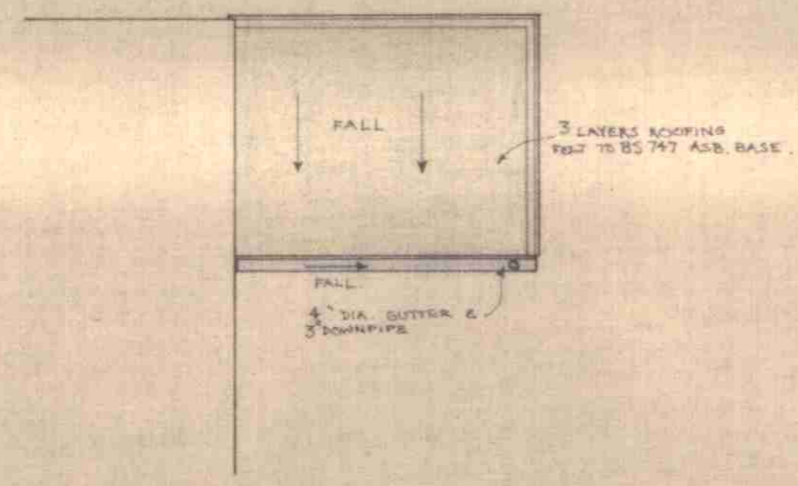
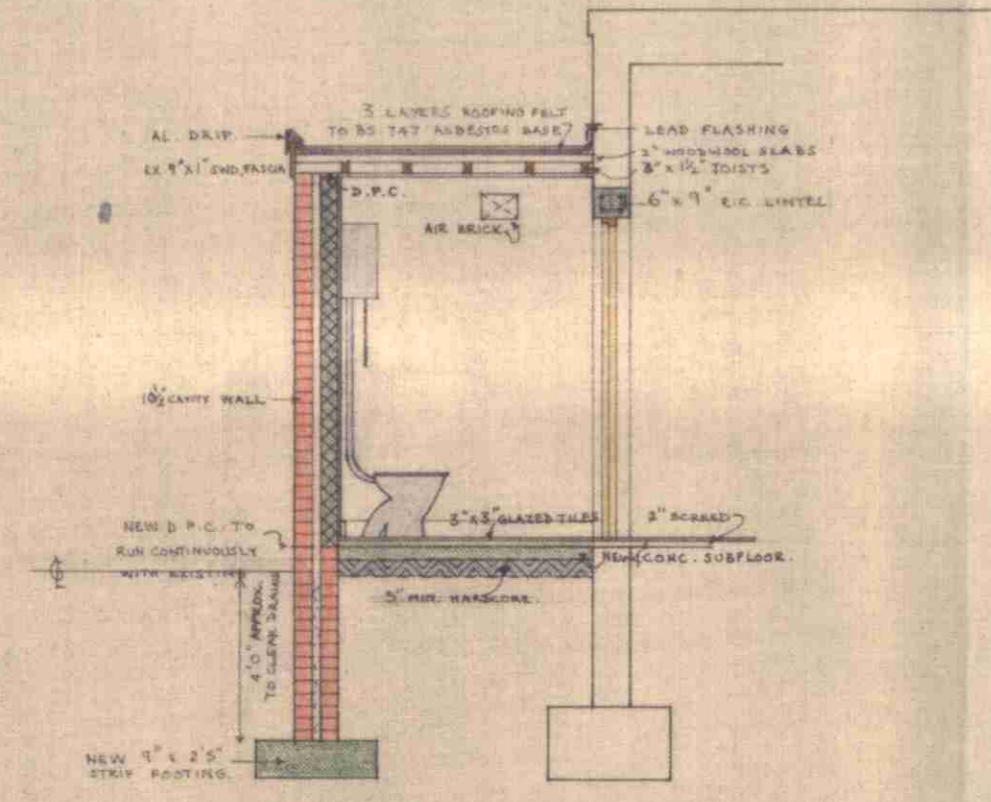


NOTES.
 1. LINTELS TO BE PROVIDED WHERE DRAINS PASS THROUGH FOUNDATION WALLS.



REVISIONS
 1. General amendments 5-12-1966.

LONDON BOROUGH OF CAMDEN
 PRESENTED TO THE PLANNING AND
 DEVELOPMENT COMMITTEE APPLICATIONS
 SUB-COMMITTEE ON 1.8 JAN 1967

GTP/J11/11/11/2984

SMITH & WILSON-SMITH E/ARIBA, AMTP.,
 86, MILE END ROAD, LONDON E.1.

"WINDSOR CASTLE" P.H.
 32, PARKWAY, CAMDEN TOWN, N.W.1.

DWG: PROPOSED ALTERATIONS.

SCALE	1/8" & 1/4" = 1'0"	DWG. NO:
DATE	28-11-1966	1029/1 R.1
DRAWN	EF	