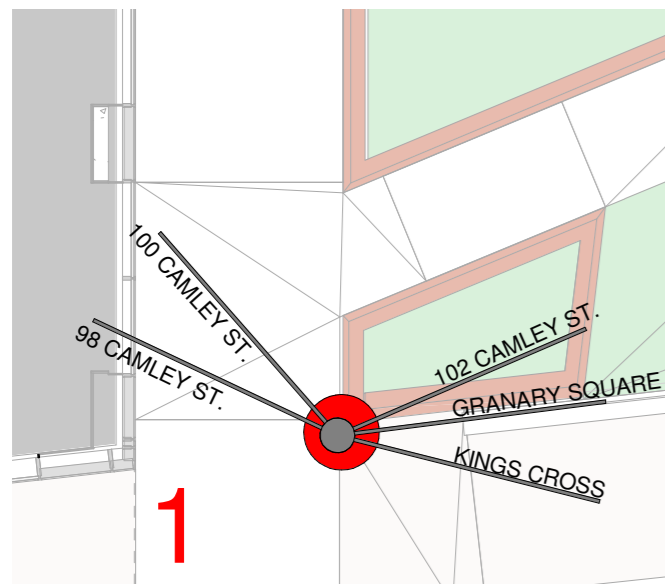


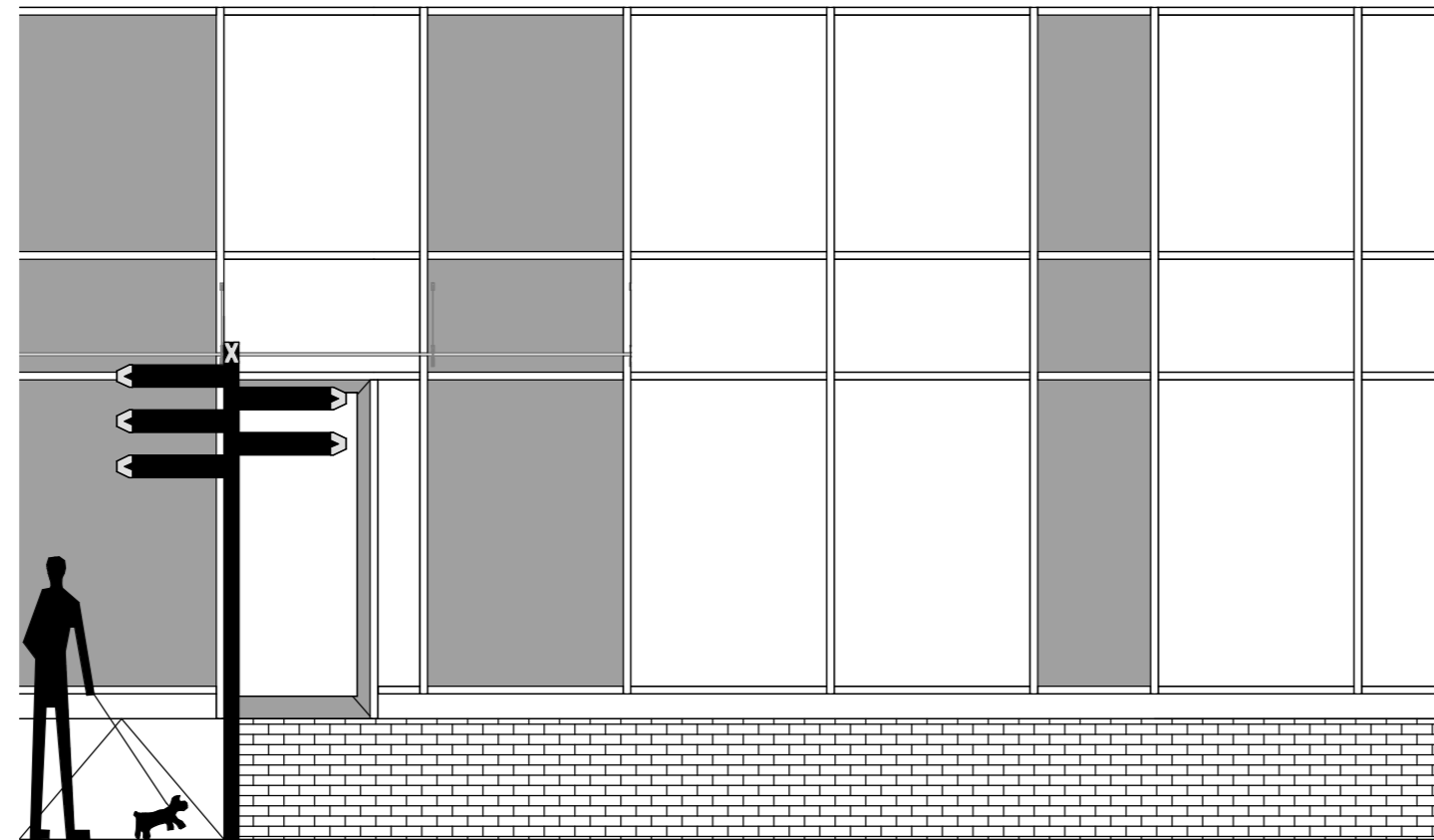
Sign 1 Plan

1 : 100



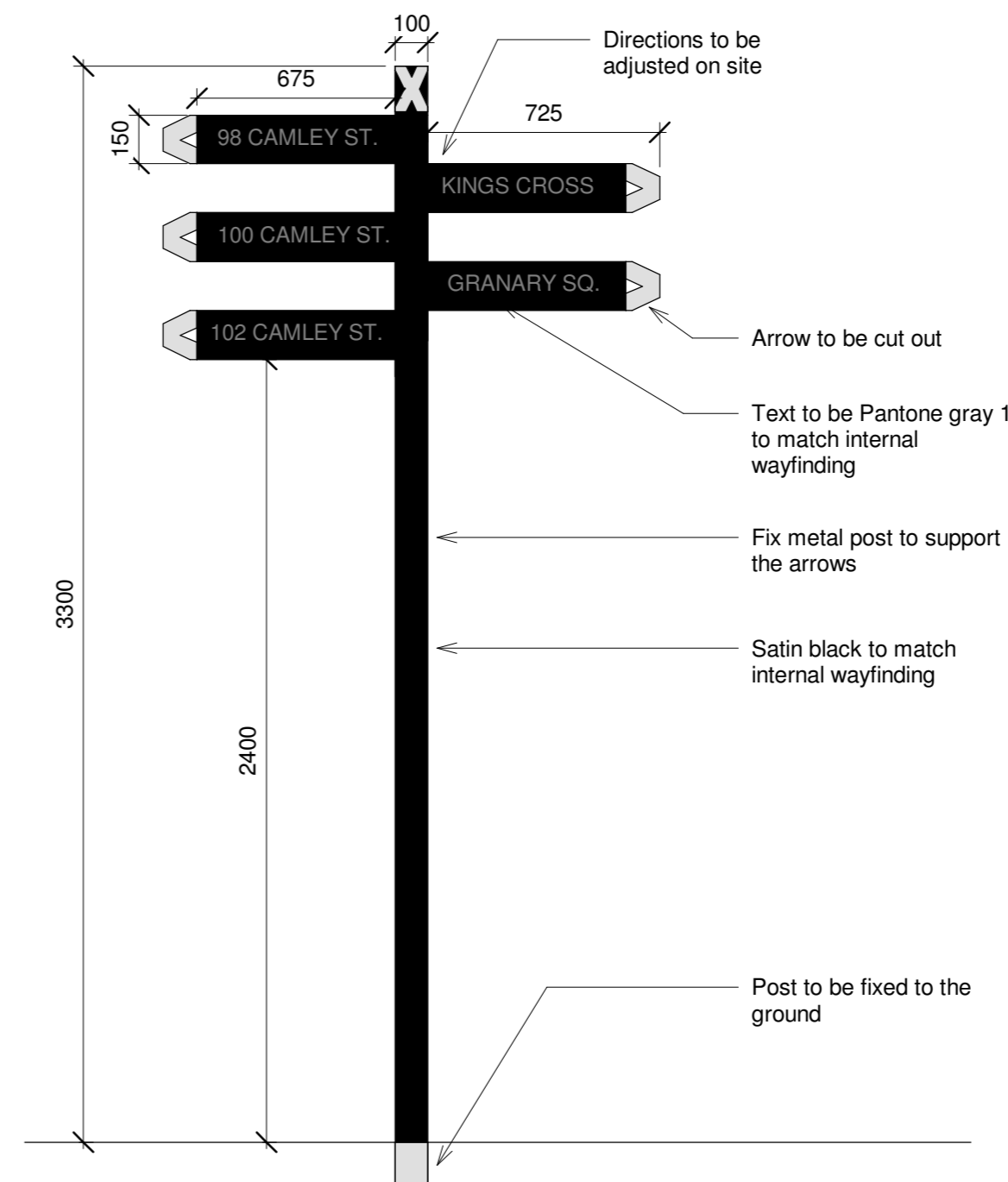
Sign 1 Elevation

1 : 50



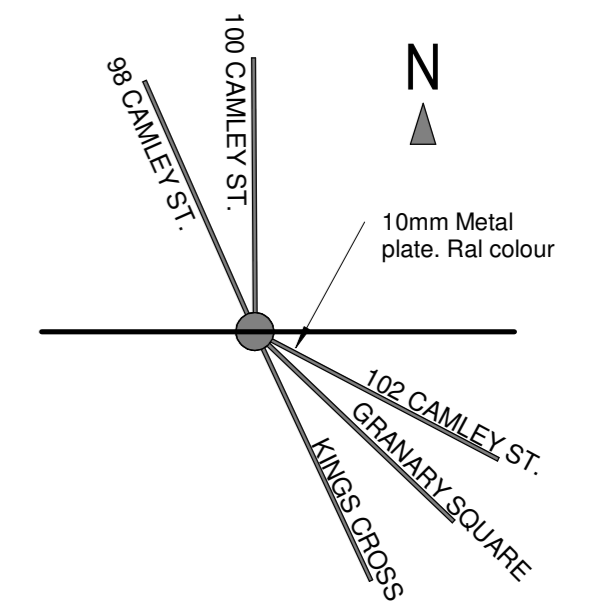
Sign Elevation Detail

1 : 20



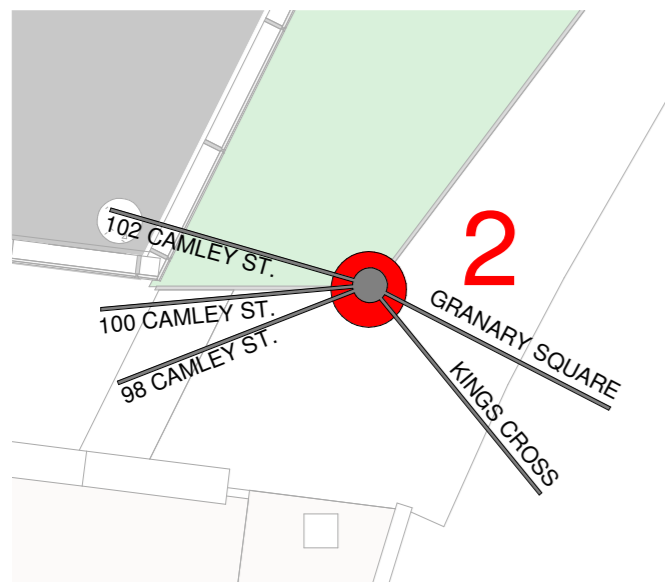
Sign 1 Plan Detail

1 : 20



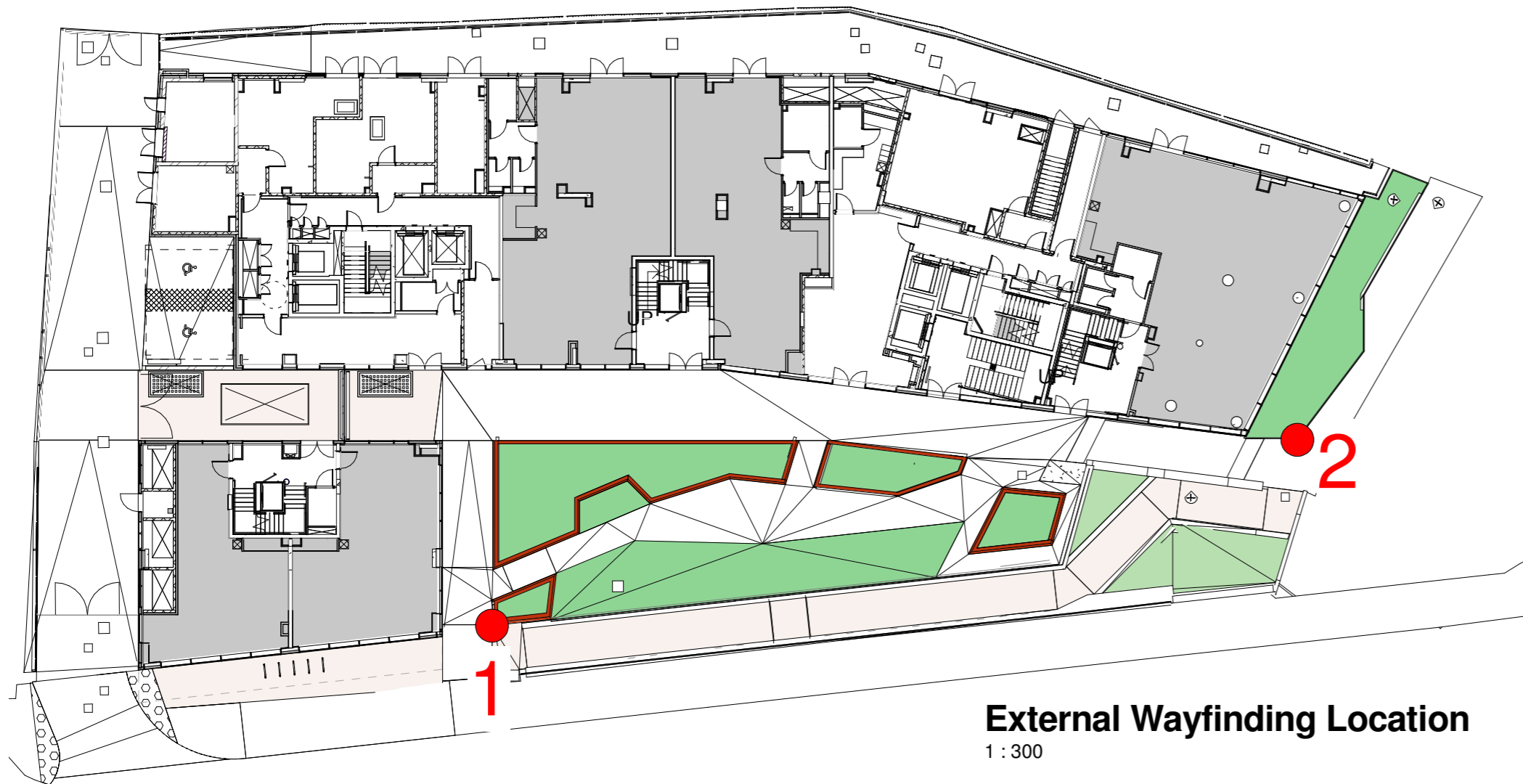
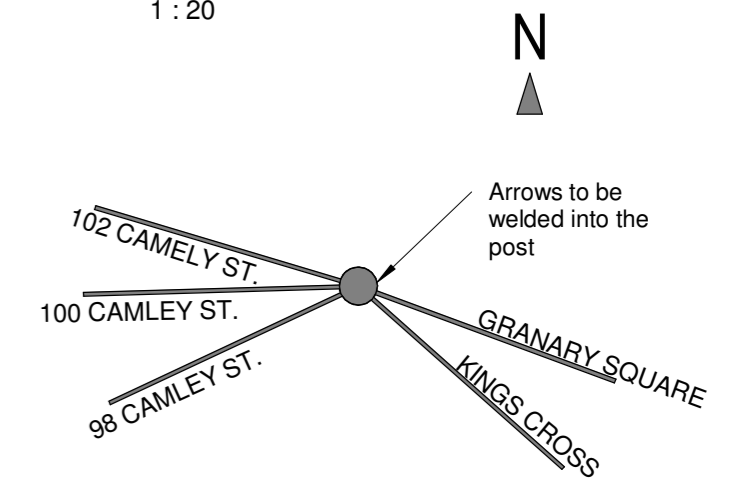
Sign 2 Plan

1 : 100



Sign 2 Plan Detail

1 : 20



External Wayfinding Location

1 : 300



This drawing must not be scaled. Figured dimensions and levels to be used. Any inaccuracies must be notified to the architect. Detail drawings and large scale drawings take precedence over smaller drawings. A2

Rev: C1 Issue for Construction

07.08.18

THIS DRAWINGS IS COPYRIGHT

Registered Office: Powell Dobson Ltd. Charterhouse, Links Business Park, St Mellons, Cardiff CF3 0LT. Powell Dobson is a trading name of Powell Dobson Ltd a company registered in England and Wales No 3873802.

PRELIMINARY	
PLANNING	
DESIGN	
TENDER	
CONSTRUCTION	✓

powelldobson
ARCHITECTS

London Office: Sherwood House, Forest Road, Kew, TW9 3BY
Tel: +44 (0)208 3322 831 email: london@powelldobson.com

Contract: 102 Camley Street
Taylor Wimpey Central London
Title: External Wayfinding Design

PDA Job No:	DRG NO.	REV
16071	LI 00 A (71)216	C1
VOLUME	LEVEL	DR TYPE

Scale: As indicated@A2
Date: 08/02/18
Drawn: GS
Checked: