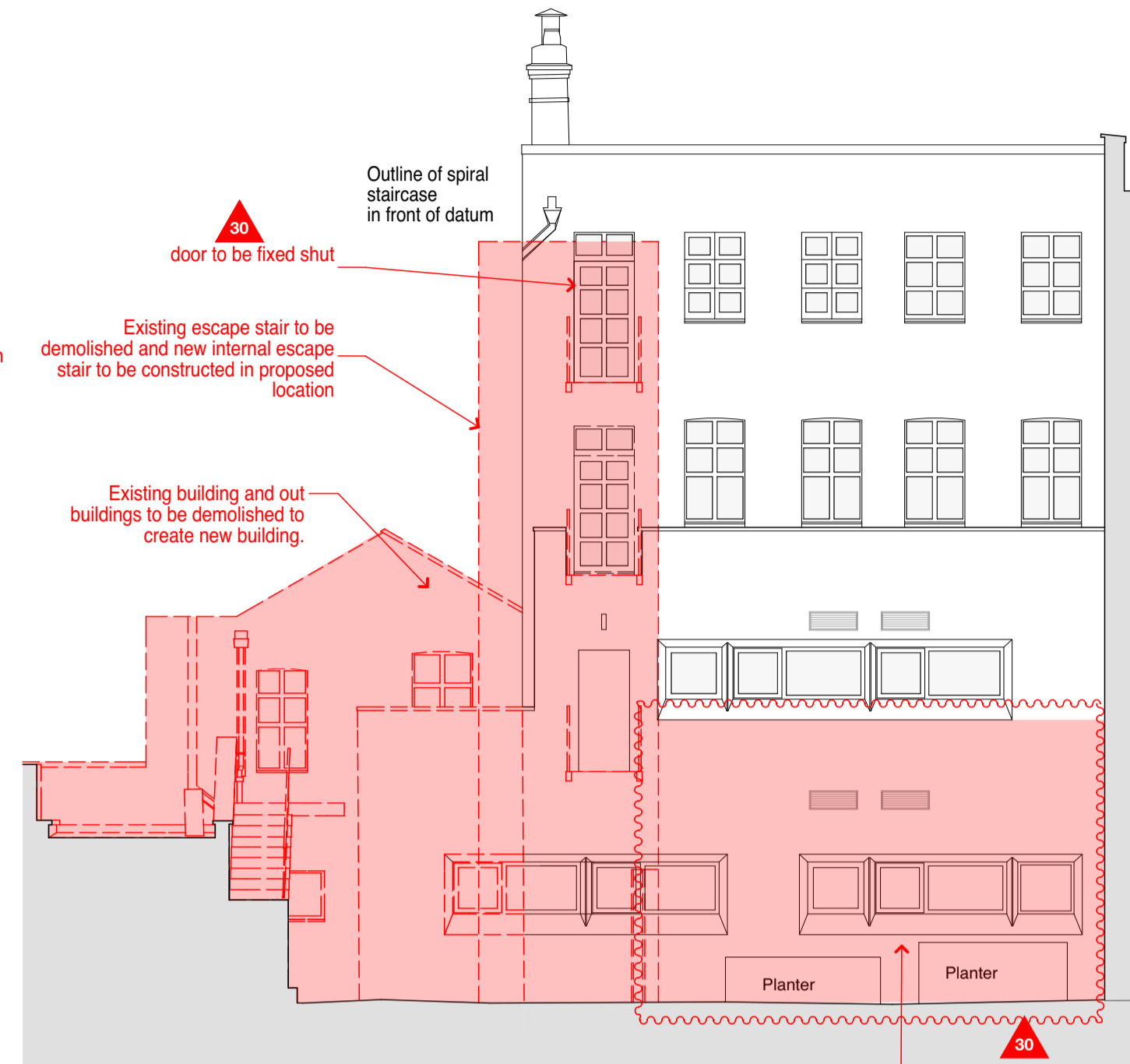
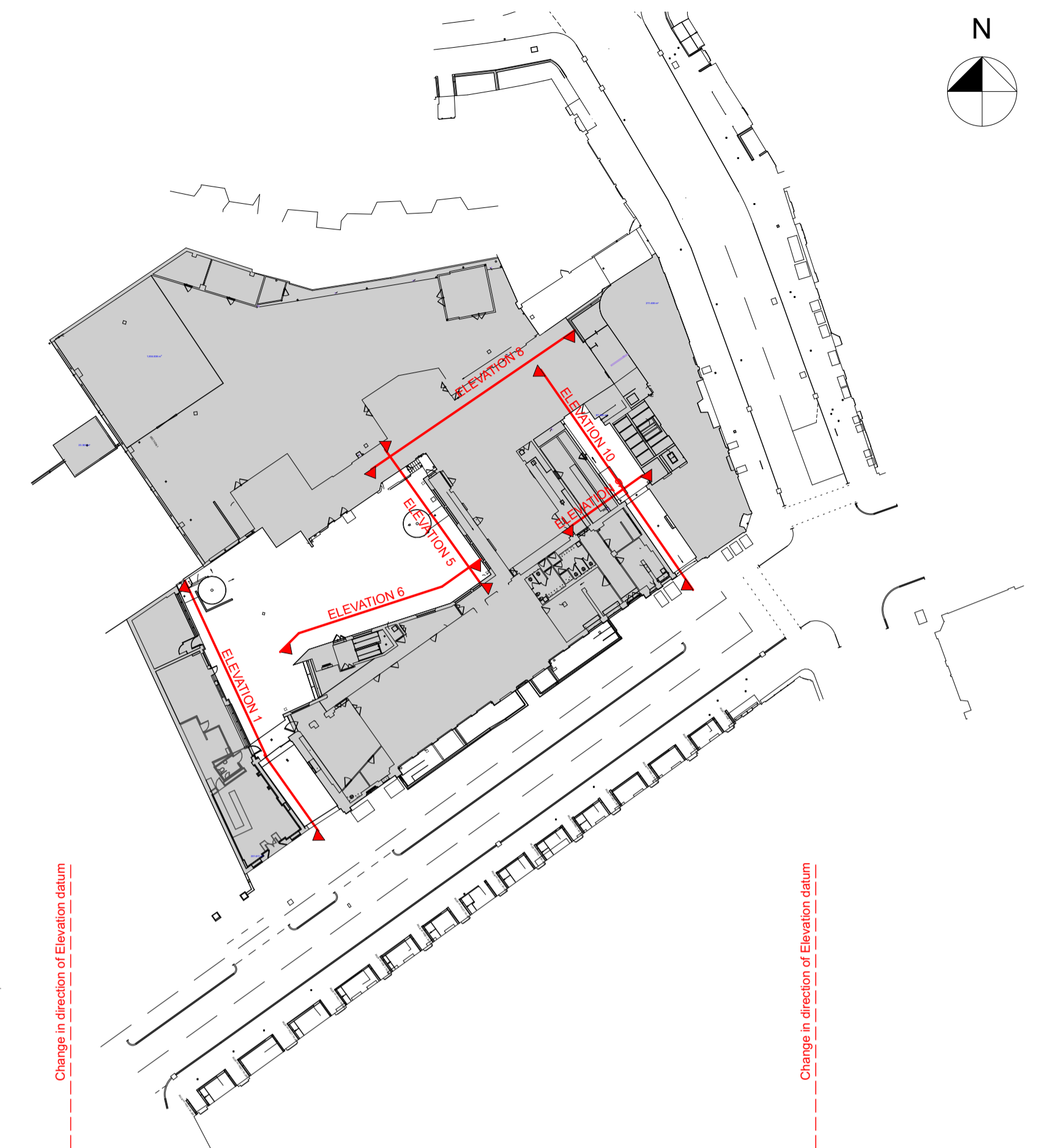


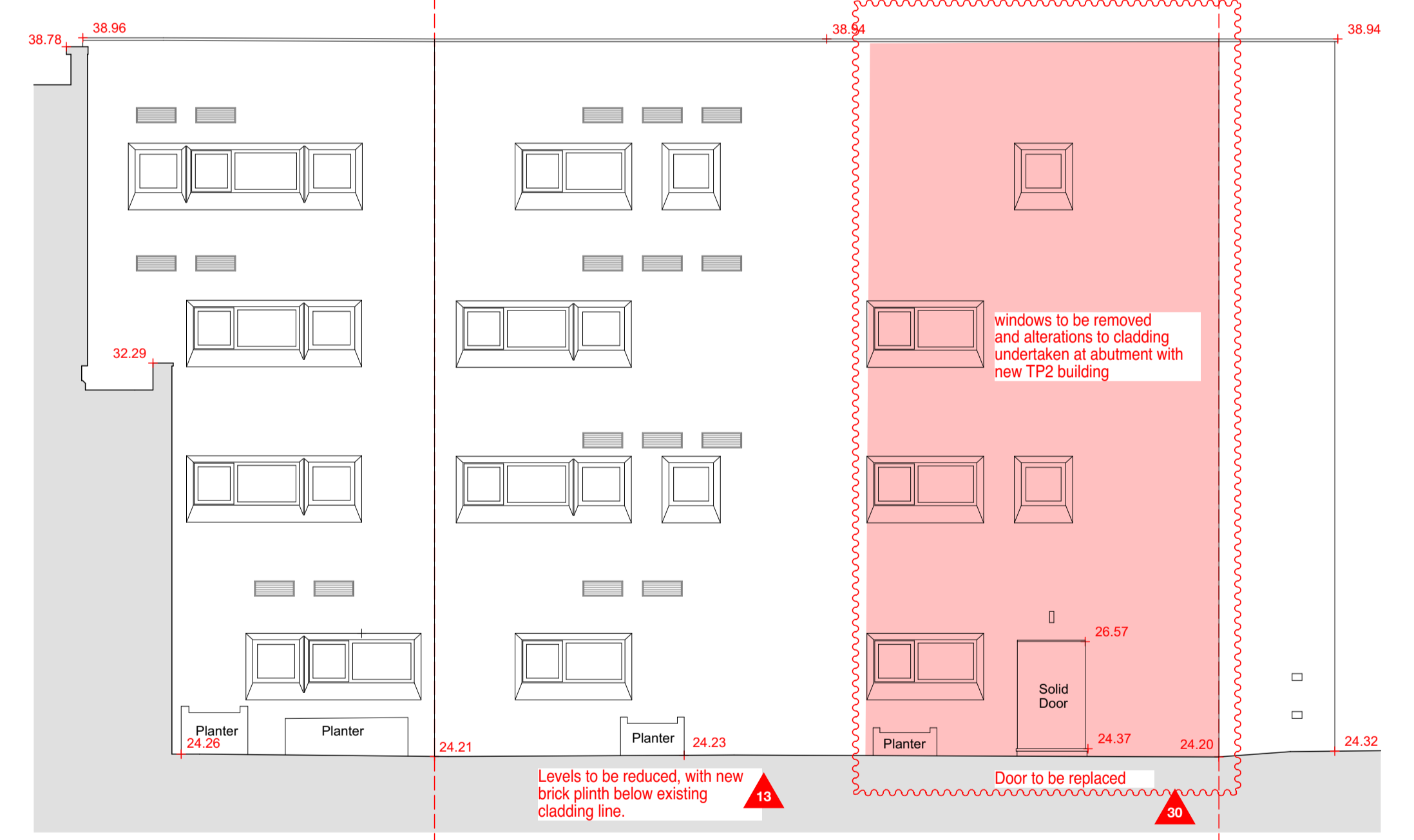
Elevation 1



Elevation 5



Elevation 10



DATUM 20.00m AOD
ELEVATION 6

LEGEND (ALL CHANGES TO ALL LEVELS)

- ▲1 Stair 2 omitted, and glazed entrance enclosure enlarged
- ▲2 Window added
- ▲3 New steps to base of external spiral stair
- ▲4 Stair 3 roof and gable end arrangement revised.
- ▲5 Level 3 accommodation mansarded
- ▲6 Roof light size, height and position adjusted, and smoke vents added.
- ▲7 Louvres omitted.
- ▲8 Roof light size, height and position adjusted.
- ▲9 External ramp adjusted, and railings added.
- ▲10 West stair core glazing fenestration adjusted to suit amended stair landing levels.
- ▲11 External paving levels in courtyard raised to achieve required paving falls.
- ▲12 Low brick plinth added to base of external walls to TP2.
- ▲13 Brick plinth added to base of existing buildings within courtyard.
- ▲14 New steps and landing outside room G1.
- ▲15 Bin store enlarged and repositioned.
- ▲16 Gallery passageway to TP2: finishes revised.
- ▲17 Gallery passageway; entrance gates design revised.
- ▲18 Window on north elevation of TP2 reduced in length.
- ▲19 Revised turn-table size and position
- ▲20 Entrance ramp gradient and levels adjusted.
- ▲21 External levels adjusted
- ▲22 TP1 west door ramp omitted
- ▲23 Fall restraint added
- ▲24 Gates removed
- ▲25 Maintenance access door added
- ▲26 Parapet revised
- ▲27 Roof/wall shape adjusted
- ▲28 TP1 reception relocated
- ▲29 Revised door design
- ▲30 Modifications to windows, doors and facades facing into courtyard.
- ▲31 Gate details revised
- ▲32 Revised proposal for bike storage replacing existing bike racks in Dairy shed.
- ▲33 Gate retained and modified
- ▲34 Bike canopy detail revised (typical condition highlighted)
- ▲35 Sub-station doors revised
- ▲36 Steps adjusted
- ▲37 Cladding changed to brass finish
- ▲38 Wall mounted planters revised (typical condition highlighted)
- ▲39 Steel posts added to boundary wall (typical condition highlighted)
- ▲40 Height of glazed entrance roof increased to suit required pitch.
- ▲41 Glazed entrance roof and canopy revised
- ▲42 New roof guarding to existing flat roof
- ▲43 Screening fins and cladding added
- ▲44 Louvres added
- ▲45 Ramp omitted
- ▲46 Door removed and infilled
- ▲47 Access hatch adjusted.
- ▲48 Depth of green/blue roof build-up adjusted.
- ▲49 Blue roof incorporated into green roof and gravel margins added.
- ▲50 Cladding build-up adjusted
- ▲51 Orientation of brass seams adjusted
- ▲52 Roof gutters revised.
- ▲53 Means of escape revisited and exit door added to TP1
- ▲54 Spiral staircase landings added at each floor
- ▲55 Door modified
- ▲56 Basement louvers to external metal staircase landings
- ▲57 Revised proposal for mean of escape in TP1
- ▲58 Revised proposal for window and door
- ▲59 Revised proposal for door to be left as current
- ▲60 Gate to be removed
- ▲61 Capping width adjusted and roof planters shown indicatively.
- ▲62 Door to be replaced
- ▲63 Revised proposal for the entrance
- ▲64 Gates and Entrance door in TP1 to be replaced
- ▲65 Existing stair to be demolished
- ▲66 Existing window and door to be replaced
- ▲67 New reconfiguration for new spiral stair and WC
- ▲68 Staircase partially demolished
- ▲69 Level adjusted
- ▲70 Lift pit adjusted
- ▲71 Level updated
- ▲72 Red line extended to include South Crescent Mews
- ▲73 Red line extended to include new ramp and frontage
- ▲74 Ladder added
- ▲75 Works to Mews paving/kerbs added
- ▲76 Minor adjustment to ridge, and eaves line, (not affecting ridge level noted on consented drawings).

