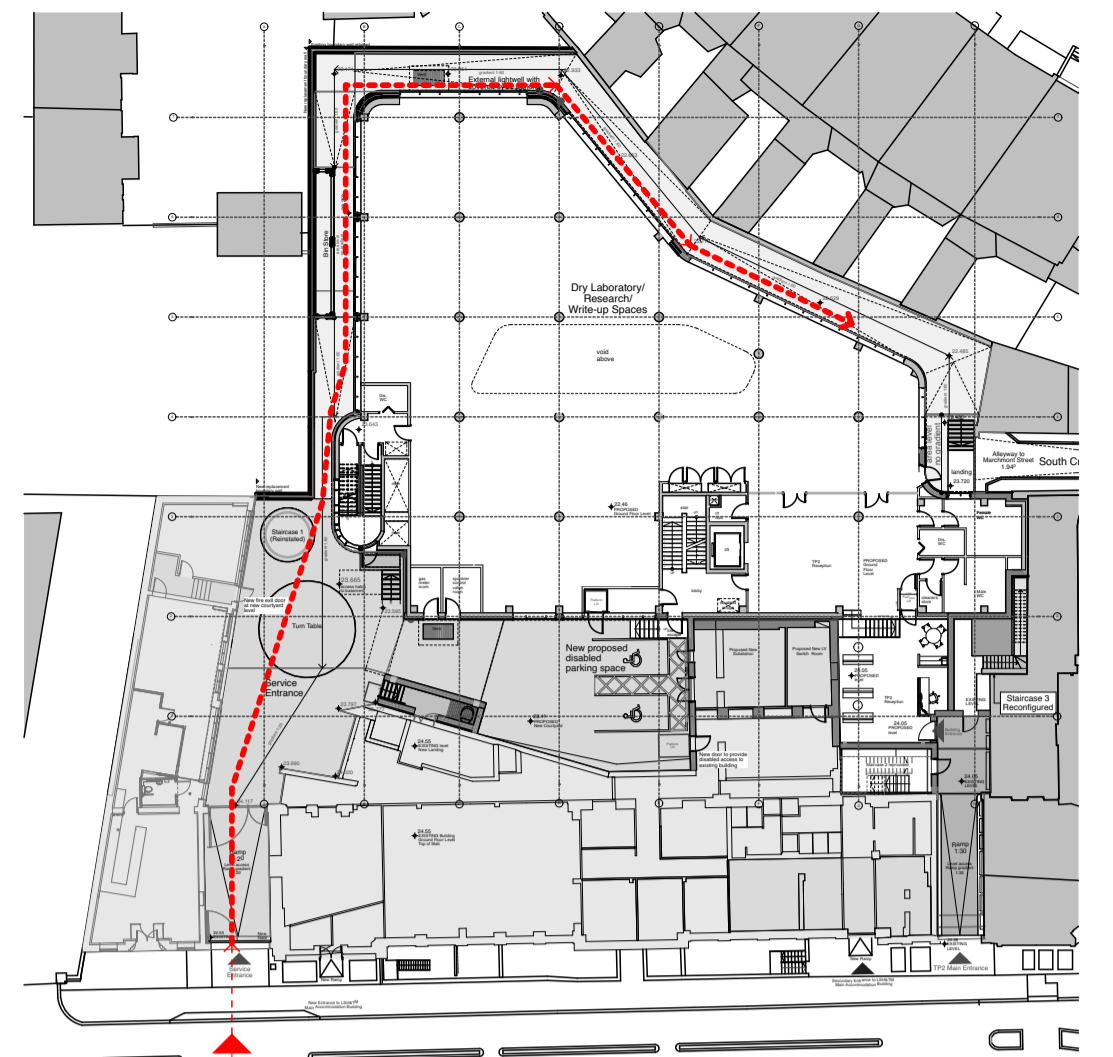
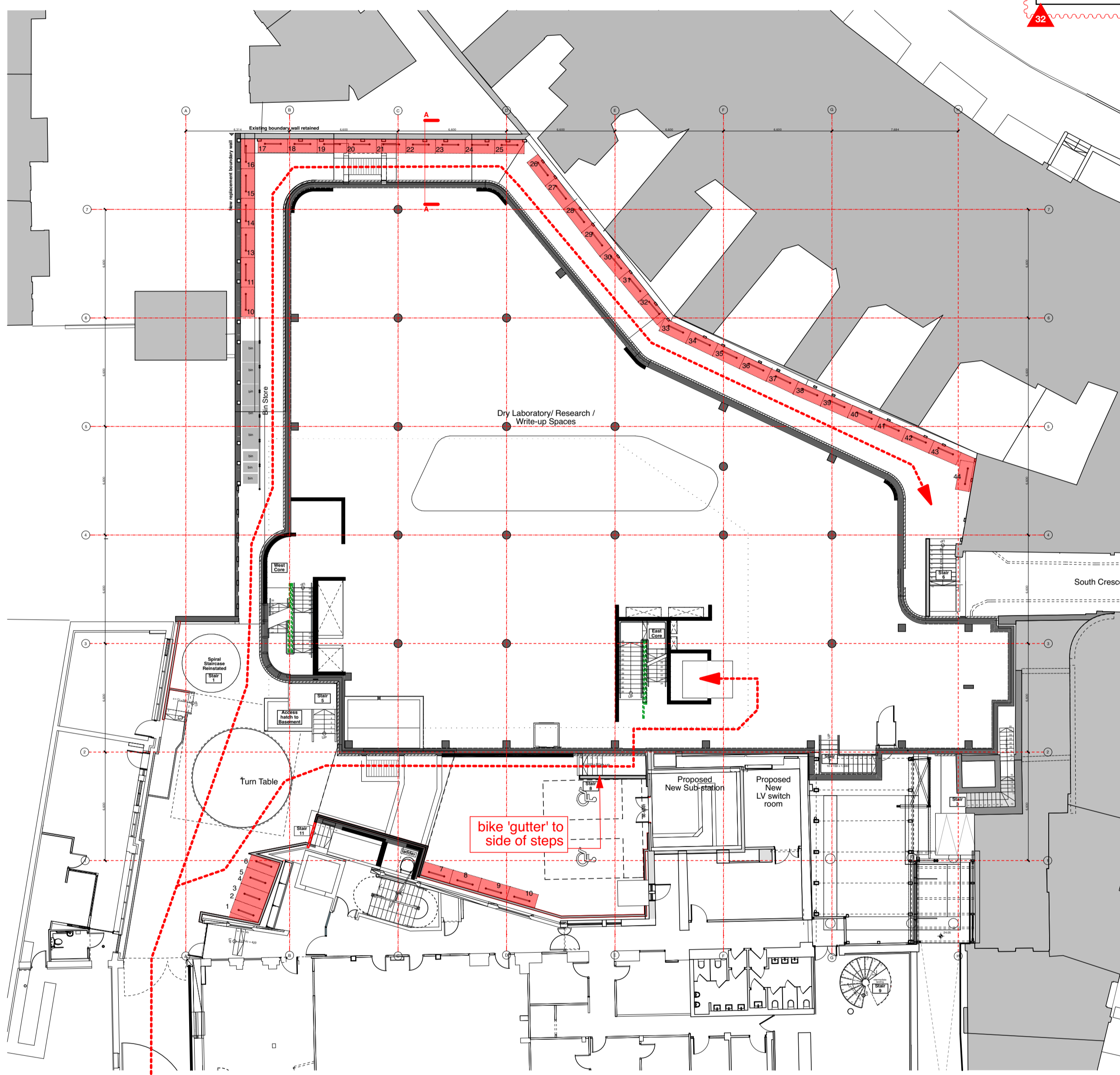


Cycle Storage Legend

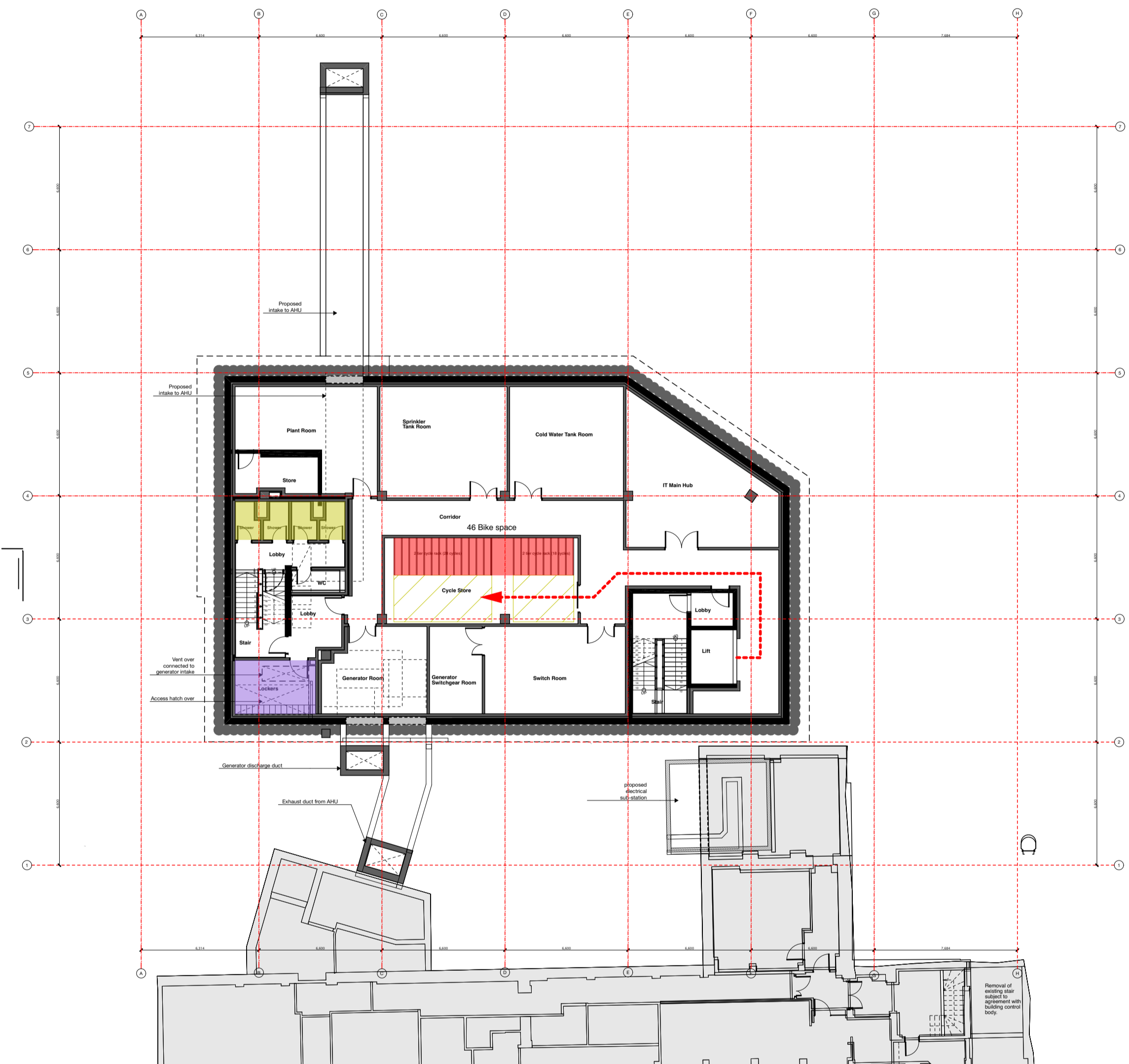
CYCLE SPACES REQUIRED	CYCLE SPACES PROPOSED	
<p>New Building (TP2) Cycle spaces required Occupancy: 317 Staff/student ratio: 1 out of 6 occupants are staff / 5 out of 6 occupants are students. Cycle parking requirement for new build (TP2): 1 long stay space per 4 staff + 1 long stay space per 20 FTE students, + 1 short stay space per 7 FTE students. Long stay provision for staff = 13.2 spaces Long stay students = 13.2 Short stay for students = 37.7 TOTAL = 64 spaces required</p> <p>Existing Building (TP1) cycle storage required (see drawing PL(00)39) TOTAL = 24 spaces required.</p> <p>Total of TP2 + TP1 cycle spaces required TOTAL = 24 + 64 = 88 spaces required.</p>	<p>Ground floor level external areas 'Sheffield' Hoop racks: 42 racks, providing 44 spaces.</p> <p>Basement Level internal racks 'Josta' type 2 tier racks: 46 spaces.</p> <p>Total of internal and external spaces TOTAL = 90 spaces proposed.</p>	<p> Cycle rack (Note: all external racks are 'Sheffield' Hoop type. Internal racks are 2 tier 'Josta' type racks).</p> <p> Lockers</p> <p> Showers</p>



Proposed Cycle Entrance through the existing pond and route around the Proposed TP2 Ground Floor Level 1:500



Ground floor level plan



Basement level plan

LEGEND (ALL CHANGES TO ALL LEVELS)

- | | | | | | | | |
|--|---|--|--|---|---|---|---|
| <ul style="list-style-type: none"> ▲1. Stair 2 omitted, and glazed entrance enclosure enlarged ▲2. Window added ▲3. New steps to base of external spiral stair ▲4. Stair 3 roof and gable end arrangement revised. ▲5. Level 3 accommodation mansarded ▲6. Roof light size, height and position adjusted, and smoke vents added. ▲7. Louvres omitted. ▲8. Roof light size, height and position adjusted. | <ul style="list-style-type: none"> ▲9. External ramp adjusted, and railings added. ▲10. West stair core glazing fenestration adjusted to suit amended stair landing levels. ▲11. External paving levels in courtyard raised to achieve required paving falls. ▲12. Low brick plinth added to base of external walls to TP2. ▲13. External levels adjusted ▲14. Brick plinth added to base of existing buildings within courtyard. ▲15. New steps and landing outside room G1. ▲16. Bin store enlarged and repositioned. ▲17. Gallery passageway to TP2: finishes revised. ▲18. Gallery passageway; entrance gates design revised. | <ul style="list-style-type: none"> ▲19. Window on north elevation of TP2 reduced in length. ▲20. Revised turn-table size and position ▲21. Entrance ramp gradient and levels adjusted. ▲22. TP1 west door ramp omitted ▲23. Fall restraint added ▲24. Gates removed ▲25. Maintenance access door added ▲26. Parapet revised ▲27. Roof/wall shape adjusted ▲28. TP1 reception relocated | <ul style="list-style-type: none"> ▲29. Revised door design ▲30. Modifications to windows, doors and facades facing into courtyard. ▲31. Gate details revised ▲32. Revised proposal for bike storage replacing existing bike racks in Dairy shed. ▲33. Gate retained and modified ▲34. Bike canopy detail revised (typical condition highlighted) ▲35. Sub-station doors revised ▲36. Steps adjusted ▲37. Cladding changed to brass finish ▲38. Wall mounted planters revised (typical condition highlighted) ▲39. Steel posts added to boundary wall (typical condition highlighted) | <ul style="list-style-type: none"> ▲40. Height of glazed entrance roof increased to suit required pitch. ▲41. Glazed entrance roof and canopy revised ▲42. New roof guarding to existing flat roof ▲43. Screening fins and cladding added ▲44. Louvres added ▲45. Ramp omitted ▲46. Door removed and infilled ▲47. Access hatch adjusted. ▲48. Depth of green/blue roof build-up adjusted. ▲49. Blue roof incorporated into green roof and gravel margins added. ▲50. Cladding build-up adjusted | <ul style="list-style-type: none"> ▲51. Orientation of brass seams adjusted ▲52. Roof gutters revised. ▲53. Means of escape revisited and exit door added to TP1 ▲54. Spiral staircase landings added at each floor ▲55. Door modified ▲56. Basement louvers to external metal staircase landings ▲57. Revised proposal for mean of escape in TP1 ▲58. Revised proposal for window and door ▲59. Revised proposal for door to be left as current ▲60. Gate to be removed ▲61. Capping width adjusted and roof planters shown indicatively. | <ul style="list-style-type: none"> ▲62. Door to be replaced ▲63. Revised proposal for the entrance ▲64. Gates and Entrance door in TP1 to be replaced ▲65. Existing stair to be demolished ▲66. Existing window and door to be replaced ▲67. New reconfiguration for new spiral stair and WC ▲68. Staircase partially demolished ▲69. Level adjusted ▲70. Lift pit adjusted ▲71. Level updated ▲72. Red line extended to include South Crescent Mews | <ul style="list-style-type: none"> ▲73. Red line extended to include new ramp and frontage ▲74. Ladder added ▲75. Works to Mews paving/kerbs added ▲76. Minor adjustment to ridge, and eaves line, (not affecting ridge level noted on consented drawings). |
|--|---|--|--|---|---|---|---|