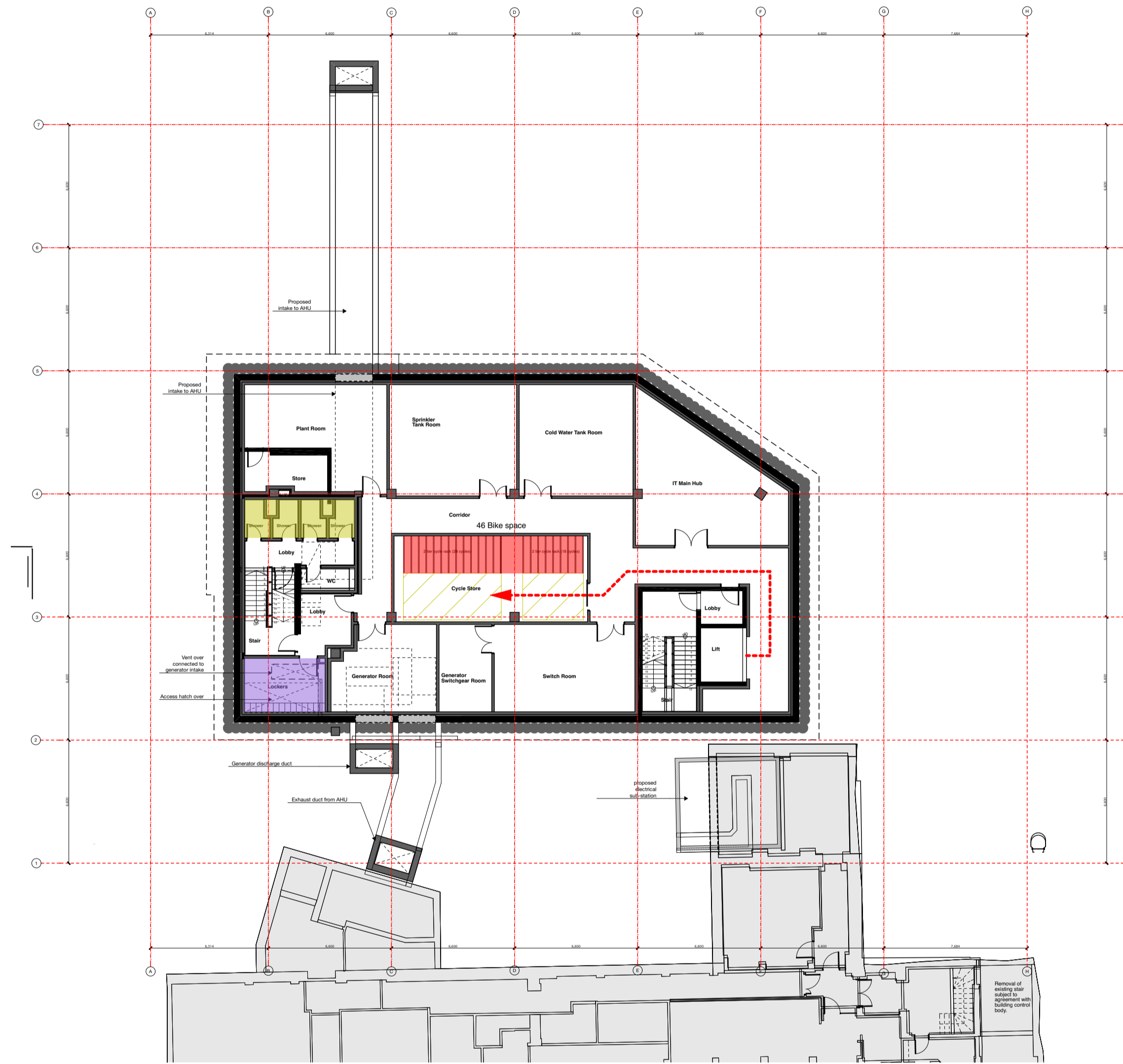
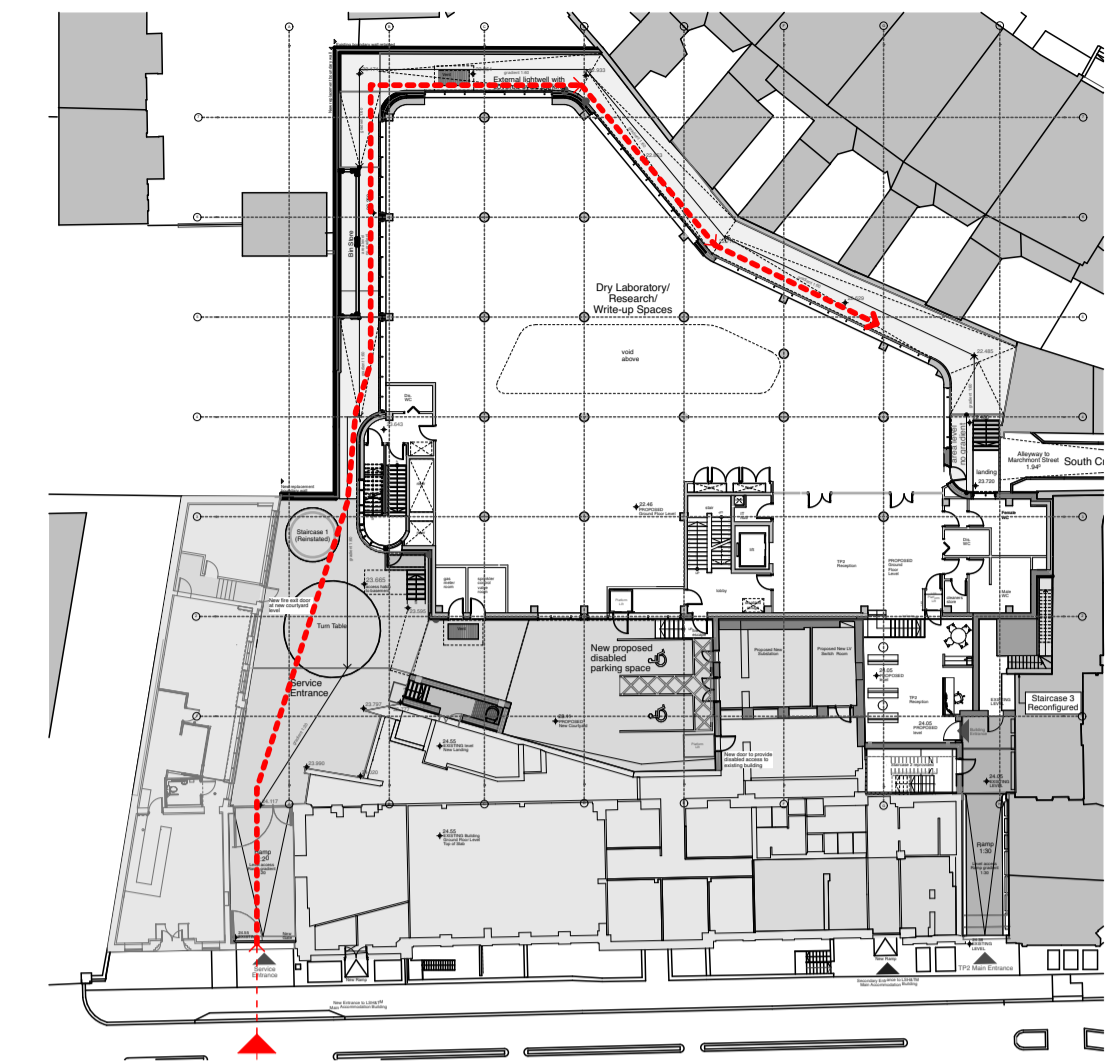


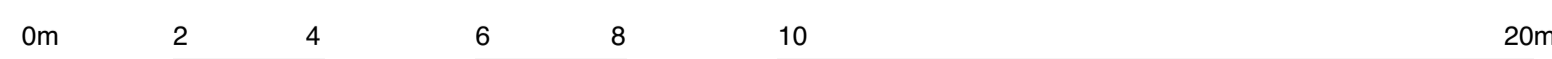
Ground floor level plan






Basement level plan



Proposed Cycle Entrance through the existing pend and route around the Proposed TP2 Ground Floor Level 1:500



Cycle Storage Legend

<p>CYCLE SPACES REQUIRED</p> <p>New Building (TP2) Cycle spaces required Occupancy: 317 Staff/student ratio: 1 out of 6 occupants are staff / 5 out of 6 occupants are students. Cycle parking requirement for new build (TP2): 1 long stay space per 4 staff + 1 long stay space per 20 FTE students, + 1 short stay space per 7 FTE students. Long stay provision for staff = 13.2 spaces Long stay students = 13.2 Short stay for students = 37.7 TOTAL = 64 spaces required</p> <p>Existing Building (TP1) cycle storage required (see drawing PL(00)39: TOTAL = 24 spaces required.</p> <p>Total of TP2 + TP1 cycle spaces required TOTAL = 24 + 64 = 88 spaces required.</p>	<p>CYCLE SPACES PROPOSED</p> <p>Ground floor level external areas 'Sheffield' Hoop racks: 42 racks, providing 44 spaces.</p> <p>Basement Level internal racks 'Josta' type 2 tier racks: 46 spaces.</p> <p>Total of internal and external spaces TOTAL = 90 spaces proposed.</p>	<p> Cycle rack (Note: all external racks are 'Sheffield' Hoop type. Internal racks are 2 tier 'Josta' type racks).</p> <p> Lockers</p> <p> Showers</p>
--	--	---

