

**RAL 9005**  
Paint - Jet Black

**MT0011**  
Metal - Hot rolled steel

SIGNAGE SCHEDULE - "S"				
DESIGN ID	COUNT	DESCRIPTION	RESP.	COMMENTS
BUILDING SIGNAGE				
13159	1	SIGN - DISK DF ILLUMINATED WITH BRACKET WALL MOUNTED EVOLVED - 24IN 610MM	SIGNAGE SUPP	
XS001	1	SIGN - WORDMARK - WHITE INTERNALLY ILLUMINATED - SIZE: 1852MM X 200MM HEIGHT	SIGNAGE SUPP	MOUNTED SECURELY VIA FIXING PLATE TO STOREFRONT FRAMEWORK



EXISTING SHOPFRONT

**SHEET NOTES**

- WHITE INTERNALLY ILLUMINATED WORDMARK TO BE CENTRED OVER DOORWAY. WORDMARK TO BE SECURELY MOUNTED TO BACK SUPPORT FRAME.
- WD0054 TIMBER LOUVRES BEHIND WORDMARK.  
ALL TIMBER TO BE TREATED SO IT DOES NOT DISCOLOUR/ROT IN EXTERNAL CONDITIONS.
- NOT USED-
- STOREFRONT TO BE CONSTRUCTED OF BLACK METAL WITH GLASS, TIMBER LOUVRES, SOLID METAL INFILLS.
- WINDOWS TO LEFT HAND SIDE OF DOOR TO BI-FOLD BACK TO LEFT HAND SIDE WALL INTERNALLY.
- BLADE SIGN TO BE INTERNALLY ILLUMINATED.
- CURRENT FACADE BOXING OUT (YELLOW IN PHOTO LEFT) TO BE CLAD IN METAL FINISHED MT0011 AND TO BE MADE FLUSH WITH CLADDING ABOVE SHOPFRONT TO ACHIEVE GOAL POST DESIGN INTENT.
- DOOR TO BE SAME STYLE AND PROPORTIONS AS REST OF STOREFRONT AND OPEN INWARDS ONTO ENTRANCE MATTING.
- BOTTOM ROW OF SHOPFRONT GLAZING TO BE FLUTED GLASS TO ACT AS MODESTY GLAZING. SUPPLIED BY SHOPFRONT CONTRACTOR.
- RAL 9005 METAL PANELS AT BASE OF SHOPFRONT SUPPLIED BY SHOPFRONT CONTRACTOR

**EXTERIOR ELEVATION NOTES**

- GENERAL CONTRACTOR TO COORDINATE AND SCHEDULE SIGNAGE INSTALLATION WITH THE SIGNAGE CONTRACTOR.
- GENERAL CONTRACTOR SHALL COORDINATE WITH ELECTRICAL CONTRACTOR TO FURNISH AND INSTALL ELECTRICAL CIRCUITS INCLUDING ALL CONDUIT, CABLING, CONNECTIONS, AND BREAKER AT PANEL BOARD NECESSARY TO SERVE SIGNAGE.
- UNLESS OTHERWISE STATED, GENERAL CONTRACTOR WILL SUPPLY AND INSTALL ALL SIGNAGE SUPPORT FRAMES, BACKING PANELS, STUDWORK, ETC. IN LINE WITH SIGNAGE CONTRACTOR'S DRAWINGS.
- ON REQUEST, SIGNAGE CONTRACTOR WILL SUPPLY SHOP DRAWINGS PRIOR TO FABRICATION TO STARBUCKS CONSTRUCTION MANAGER/PROJECT MANAGER.
- SIGNAGE CONTRACTOR TO INSTALL SIGNAGE IN COMPLIANCE WITH APPROVED PROJECT DRAWINGS AND/OR LOCAL APPLICABLE REGULATIONS.
- GENERAL CONTRACTOR TO NOTIFY STARBUCKS CONSTRUCTION MANAGER IMMEDIATELY IF SHOP DRAWINGS OR INSTALLATION IS IN DISCREPANCY WITH STARBUCKS ARCHITECTURAL DRAWINGS.
- GENERAL CONTRACTOR TO CLEAN, PATCH AND REPAIR EXISTING EXTERIOR AS REQUIRED.

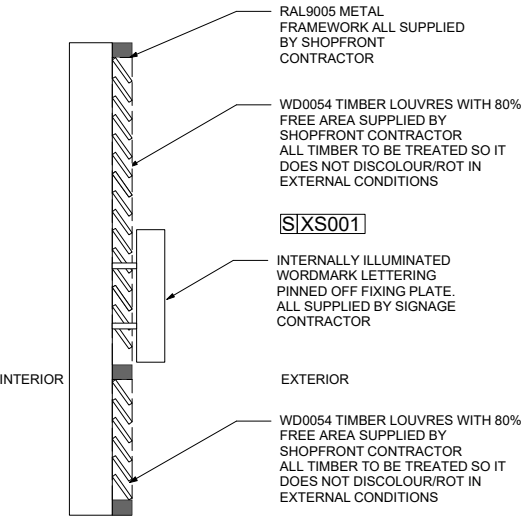


**Starbucks Coffee Company**  
Building 4, Chiswick Park  
566 Chiswick High Road  
London, W4 5YE

These Drawings and Specifications are confidential and shall remain the sole property of Starbucks Corporation, which is the owner of the copyright in this work. They shall not be reproduced (in whole or in part), shared with third parties or used in any manner on other projects or extensions to this project without the prior written consent of Starbucks Corporation. These drawings and specifications are intended to express Design Intent for a prototypical Starbucks store (which is subject to change at anytime) and do not reflect actual site conditions. Neither party shall have any obligation nor liability to the other (except as stated above) until a written agreement is fully executed by both parties.

Architect of Record

Revision Schedule			
Rev	Date	By	Description
A	20.11.18	EV	SHOP FRONT FINISH
B	03.12.18	EV	REVISED SHOPFRONT
C	19.12.18	EV	REVISED SHOPFRONT

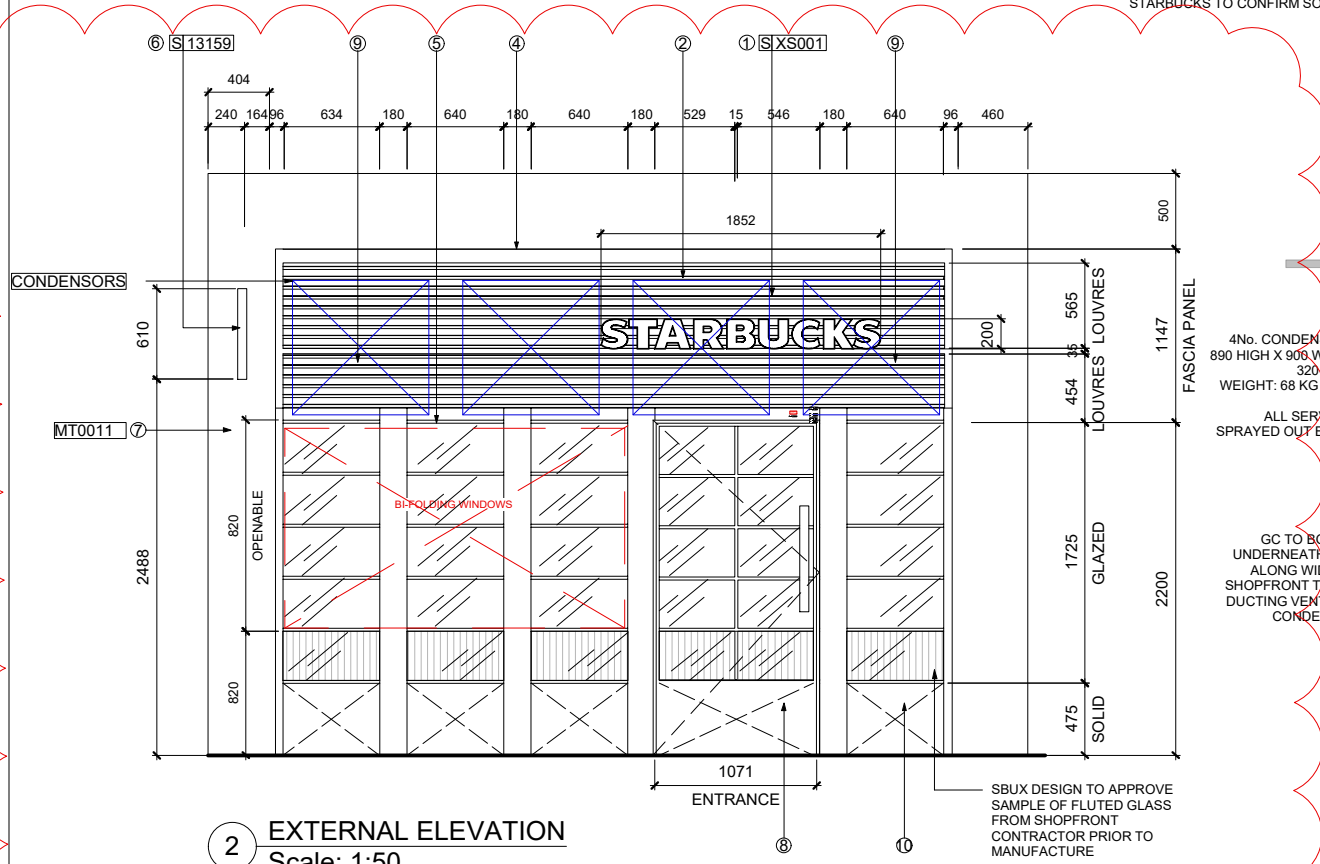


**1 SECTION - DETAIL 1**  
Scale: 1:10

**GC TO CONFIRM ALL DIMENSIONS ON SITE AND ADVISE STARBUCKS OF ANY CHANGES.**

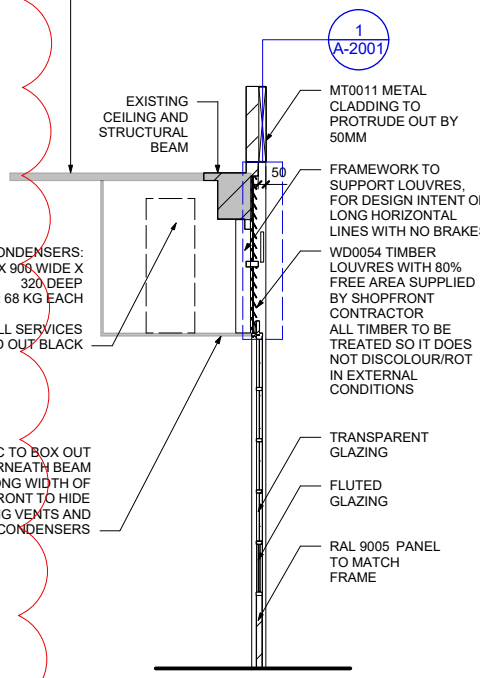
**SHOPFRONT CONTRACTOR TO ACCURATELY MEASURE ON SITE PRIOR TO MANUFACTURE**

**DRAWINGS ARE DESIGN INTENT ONLY. SHOPFRONT CONTRACTOR TO SUPPLY SHOPDRAWINGS FOR SBUX DESIGN TO APPROVE PRIOR TO MANUFACTURE**

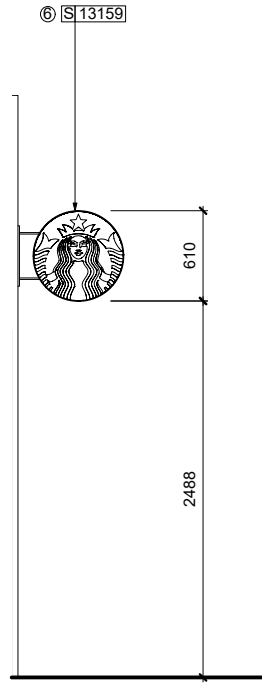


**2 EXTERNAL ELEVATION**  
Scale: 1:50

GC TO SUPPLY ACOUSTIC LINING TO INTERNAL BULKHEAD SUCH AS ROCKWOOL RWA45 NON-WOVEN GLASS WOOL HELD IN PLACE BY CHICKEN WIRE WITH ANTI-VIBRATION MOUNTINGS.  
STARBUCKS TO CONFIRM SOLUTION PRIOR TO CONSTRUCTION



**3 SECTION**  
Scale: 1:50



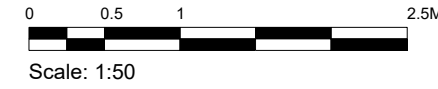
**4 SIDE ELEVATION**  
Scale: 1:50



**5 EXTERIOR VIEW**  
BI-FOLD WINDOWS CLOSED



**6 EXTERIOR VIEW**  
BI-FOLD WINDOWS OPEN



CONSTRUCTION DRAWING SET

Project Name:  
Kentish Town

Project Address:  
325 Kentish Town Road  
Kentish Town London  
NW5 2TJ

Store #: 55927  
Project #: 81634-001  
Concept:  
Palette:  
Issue Date: 30.07.18  
Design Manager: Adrienne Cooper  
Project Designer: Phil Parkin  
Production Designer: EVOLVE  
Checked by: NP/SA (EV)

Sheet Title:  
**Exterior Elevations**

Scale: As indicated

Sheet Number:  
A-2001