

Notes

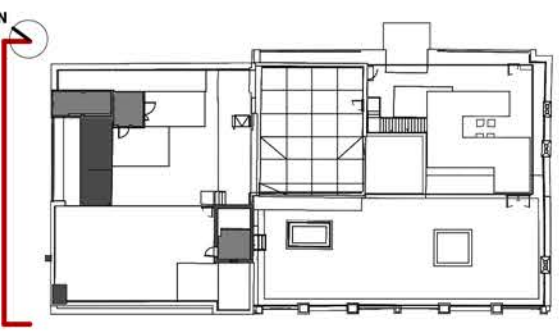
Materials - key

- (A) Louvred screen  
(B) Louvred screen  
(C) Louvred door/ screen  
(D) New door  
(E) New door  
(F) New cladding  
(G) Windows to north riser  
(H) Balustrade  
(I) New stair to access roof

P 10	17.12.18	Planning - for DVD comments
P 9	18.01.18	Material Charges for Facade
P 8	15.01.18	Planning - reviewed for DVD comments
P 7	12.01.18	Planning - reviewed drawings
P 6	08.01.18	Planning - Louvre heights reduced
P 5	22.12.17	Employer's Requirements
P 4	20.12.17	Planning drawings - new elements to be highlighted
P 3	30.10.17	Planning - Windows to North west elevation
P 2	09.10.17	Issue for planning - amendments as per DVD comments
P 1	18.09.17	Planning

Date Description

Key Plan



DO NOT SCALE THIS DRAWING. ALL DIMENSIONS TO BE VERIFIED ON SITE. THIS DRAWING IS TO BE READ IN CONJUNCTION WITH ALL RELATED ARCHITECTURAL AND ENGINEERING DRAWINGS/DETAILS AND OTHER RELEVANT TENDER INFORMATION. ANY DISCREPANCIES BETWEEN THIS DRAWING AND ANY OTHER INFORMATION SHOULD BE REPORTED TO THE PROJECT CONTRACTOR. CONTRACTORS ARE TO VERIFY ALL SITE DIMENSIONS AND CONDITIONS BEFORE MANUFACTURE.

Stage 03

**ARCHITECTS** **sha**

45 Gee Street  
Fifth Floor  
London  
EC1V 3RS  
United Kingdom  
T 0207 549 4050  
www.steffian.co.uk

Project Number	Scale
8239.00	As indicated A0

Client

HSL

Project

60 Whitfield Street

Title

Proposed Elevation -  
North West face

Drawing No Revisions

60WS-A-SBA-DR-XX-4010-P10

Drawn	Checked	Approved
EL	AI	RC

1:50

