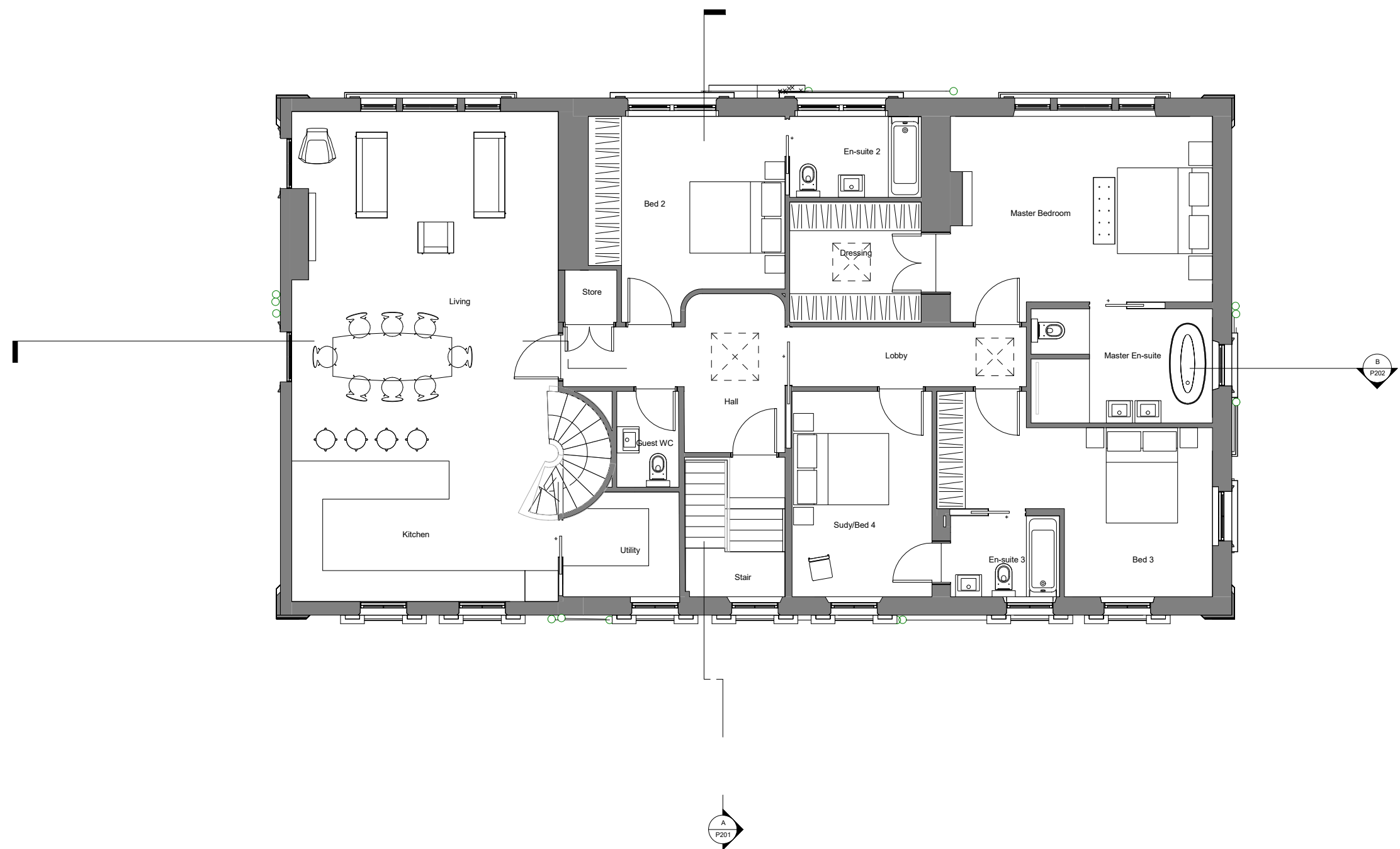
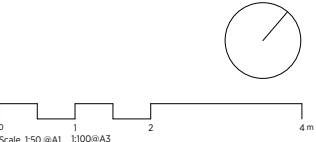


GENERAL NOTES:
This drawing is copyright of KSR architects. This drawing must be read in conjunction with the Designer's Risk Assessment, specification and all other relevant documentation and drawings. KSR architects accept no liability for any expense, loss or damage of whatsoever nature and however arising from any variation made to this drawing or in the execution of the work to which it relates which has not been referred to them and their approval obtained.
Areas are based on unchecked survey and are approximate only. Do not scale from this drawing or the digital data, only figured dimensions are to be used. Refer to linear scale for guidance. Check all dimensions on site prior to carrying out any works and advise any discrepancy



1 02a Second Floor (Proposed)
1:50

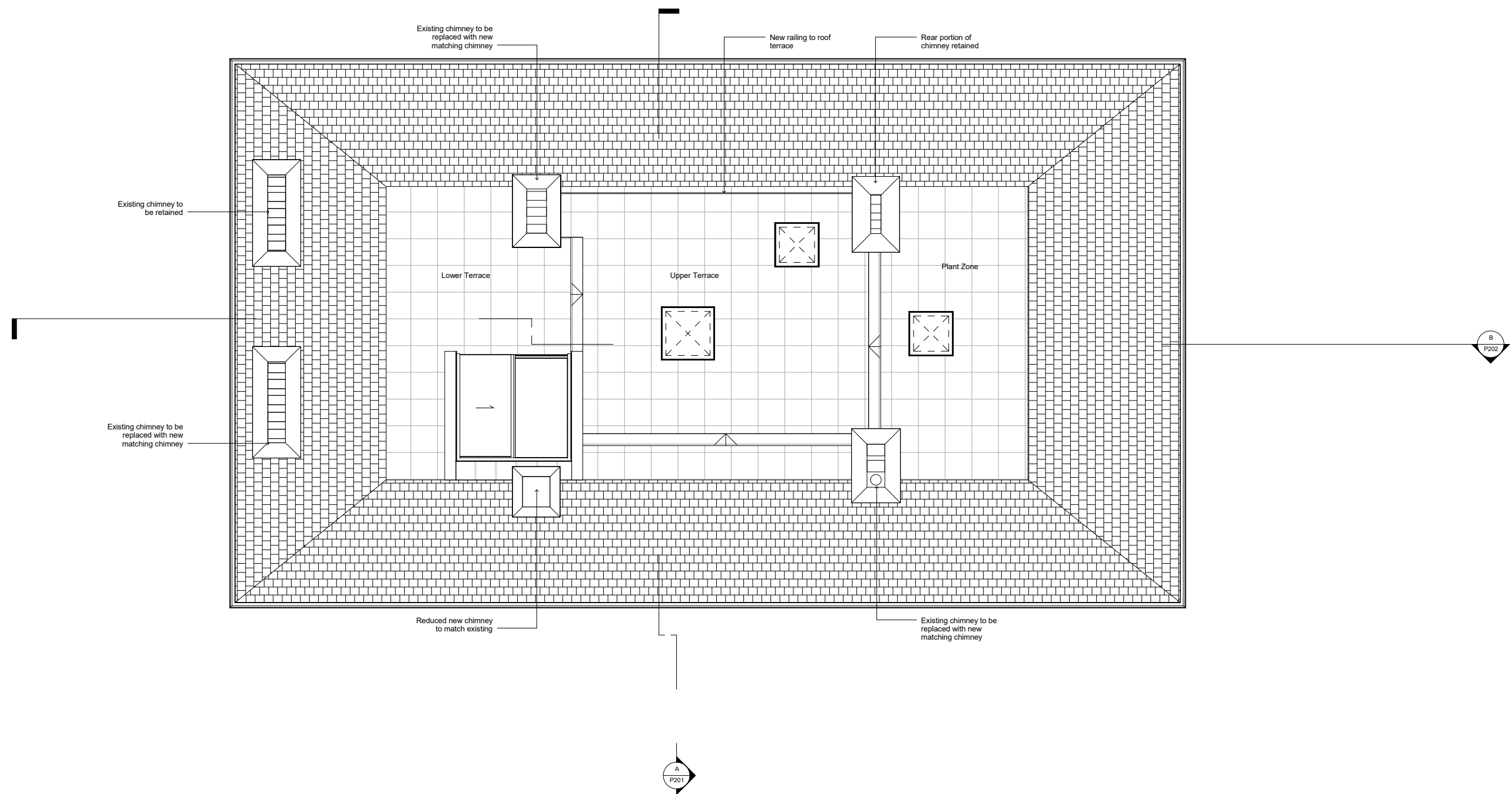


KSRARCHITECTS
KSR Architects LLP mail@ksrarchitects.com
14 Greenland Street t: +44 (0)20 7592 5000
London NW1 0ND www.ksrarchitects.com

Oak Hill House
Second Floor Plan

Date: Nov 2018	Status: Planning
Scale: 1:50 @A1	© KSR Architects
Project Ref: 18018	Drawing No: P102 Revision:

GENERAL NOTES:
This drawing is copyright of KSR architects. This drawing must be read in conjunction with the Designer's Risk Assessment, specification and all other relevant documentation and drawings. KSR architects accept no liability for any expense, loss or damage of whatsoever nature and however arising from any variation made to this drawing or in the execution of the work to which it relates which has not been referred to them and their approval obtained.
Areas are based on unchecked survey and are approximate only. Do not scale from this drawing or the digital data, only figured dimensions are to be used. Refer to linear scale for guidance. Check all dimensions on site prior to carrying out any works and advise any discrepancy



1 03 Roof Plan
1:50

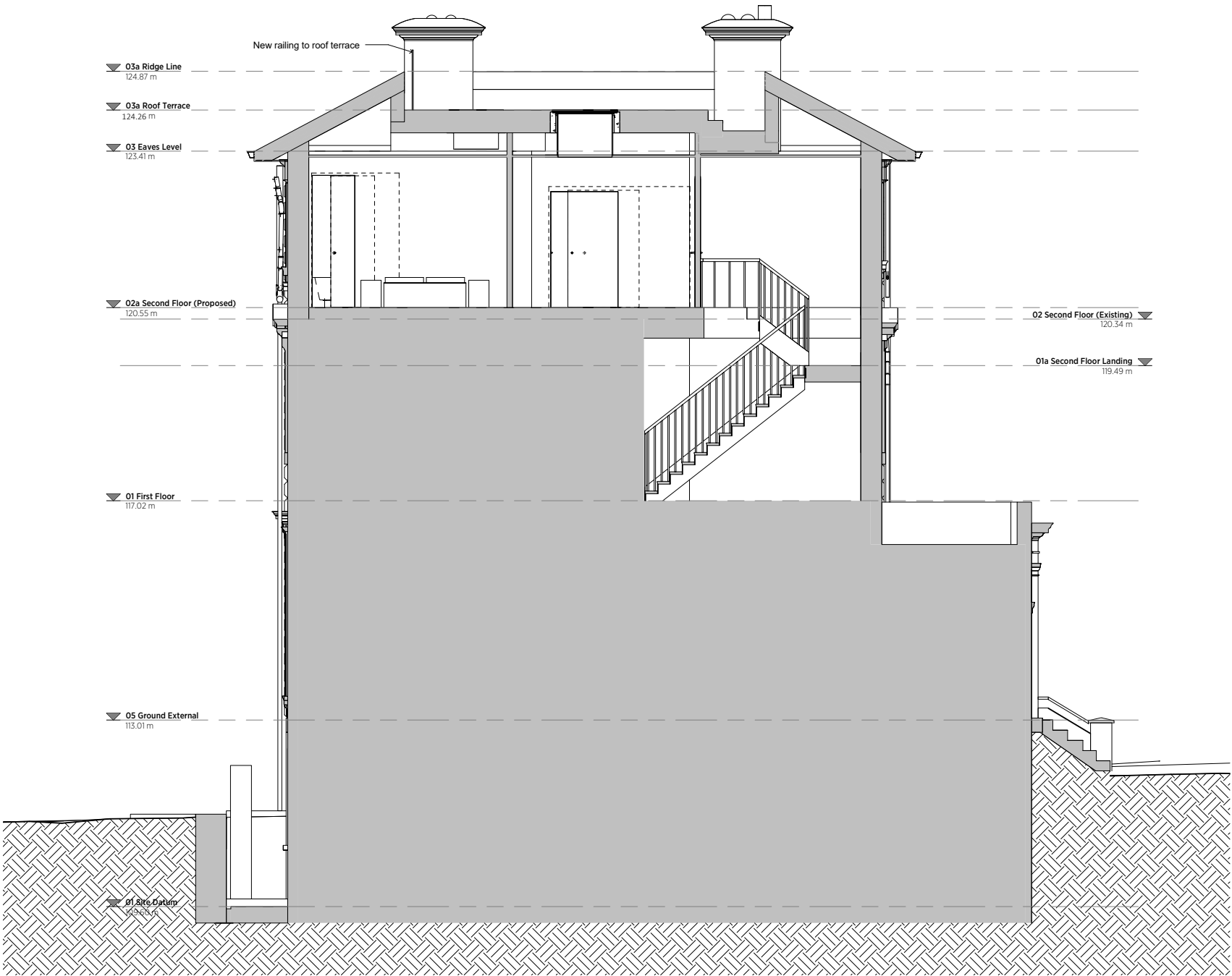
0 1 2 4m
Scale 1:50 @A1 1:100 @A3

KSRARCHITECTS
KSR Architects LLP
14 Greenland Street
London NW1 0ND
email@ksrarchitects.com
t: +44 (0)20 7592 5000
www.ksrarchitects.com

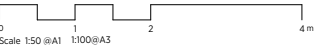
Oak Hill House
Roof Plan

Date: Nov 2018	Status: Planning
Scale: 1:50 @A1	© KSR Architects
Project Ref: 18018	Drawing No: P103

GENERAL NOTES:
This drawing is copyright of KSR architects. This drawing must be read in conjunction with the Designer's Risk Assessment, specification and all other relevant documentation and drawings. KSR architects accept no liability for any expense, loss or damage of whatsoever nature and however arising from any variation made to this drawing or in the execution of the work to which it relates which has not been referred to them and their approval obtained.
Areas are based on unchecked survey and are approximate only. Do not scale from this drawing or the digital data, only figured dimensions are to be used. Refer to linear scale for guidance. Check all dimensions on site prior to carrying out any works and advise any discrepancy



A Section AA
1:50

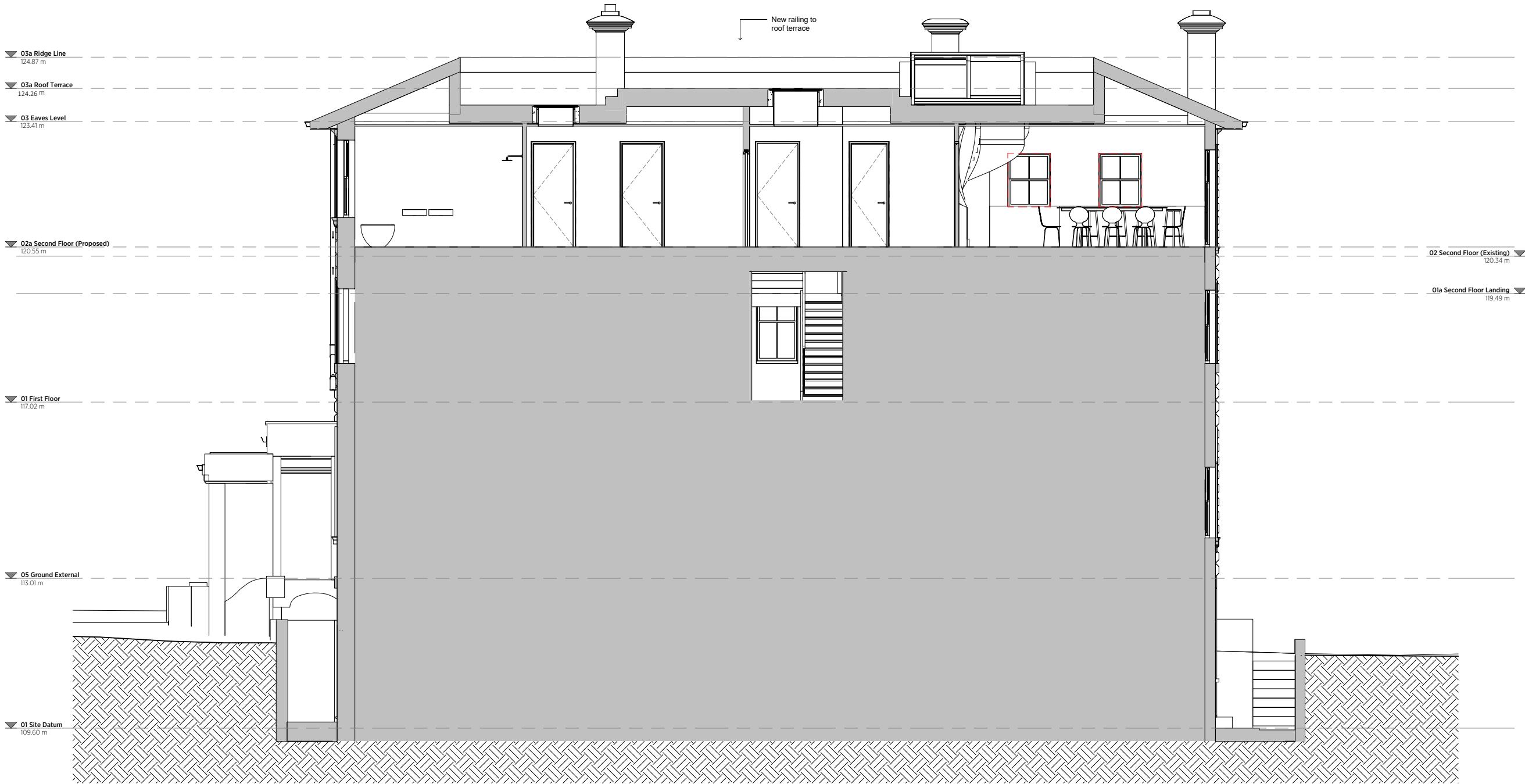


KSRARCHITECTS
KSR Architects LLP
14 Greenland Street
London NW1 0ND
mail@ksrarchitects.com
t: +44 (0)20 7592 2500
www.ksrarchitects.com

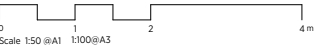
Oak Hill House
Section AA

Date: Nov 2018	Status: Planning
Scale: 1:50 @A1	© KSR Architects
Project Ref: 18018	Drawing No: P201

GENERAL NOTES:
This drawing is copyright of KSR architects. This drawing must be read in conjunction with the Designer's Risk Assessment, specification and all other relevant documentation and drawings. KSR architects accept no liability for any expense, loss or damage of whatsoever nature and however arising from any variation made to this drawing or in the execution of the work to which it relates which has not been referred to them and their approval obtained.
Areas are based on unchecked survey and are approximate only. Do not scale from this drawing or the digital data, only figured dimensions are to be used. Refer to linear scale for guidance. Check all dimensions on site prior to carrying out any works and advise any discrepancy



B Section BB
1:50



KSRARCHITECTS
KSR Architects LLP
14 Greenland Street
London NW1 0ND
mail@ksrarchitects.com
t: +44 (0)20 7692 2000
www.ksrarchitects.com

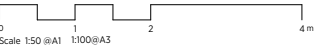
Oak Hill House
Section BB

Date:	Nov 2018	Status:	Planning
Scale:	1:50 @A1	©:	KSR Architects
Project Ref:	18018	Drawing No:	P202

GENERAL NOTES:
This drawing is copyright of KSR architects. This drawing must be read in conjunction with the Designer's Risk Assessment, specification and all other relevant documentation and drawings. KSR architects accept no liability for any expense, loss or damage of whatsoever nature and however arising from any variation made to this drawing or in the execution of the work to which it relates which has not been referred to them and their approval obtained.
Areas are based on unchecked survey and are approximate only. Do not scale from this drawing or the digital data, only figured dimensions are to be used. Refer to linear scale for guidance. Check all dimensions on site prior to carrying out any works and advise any discrepancy



1 Elevation 1
1:50



KSRARCHITECTS
KSR Architects LLP
14 Greenland Street
London NW1 0ND
mail@ksrarchitects.com
t: +44 (0)20 7592 2000
www.ksrarchitects.com

Oak Hill House
Elevation 1 (SE)

Date:	Nov 2018	Status:	Planning
Scale:	1:50 @A1	©:	KSR Architects
Project Ref:	18018	Drawing No:	P301
Revision:			

GENERAL NOTES:
This drawing is copyright of KSR architects. This drawing must be read in conjunction with the Designer's Risk Assessment, specification and all other relevant documentation and drawings. KSR architects accept no liability for any expense, loss or damage of whatsoever nature and however arising from any variation made to this drawing or in the execution of the work to which it relates which has not been referred to them and their approval obtained.
Areas are based on unchecked survey and are approximate only. Do not scale from this drawing or the digital data, only figured dimensions are to be used. Refer to linear scale for guidance. Check all dimensions on site prior to carrying out any works and advise any discrepancy



1 Elevation 2
1:50



KSRARCHITECTS
KSR Architects LLP
14 Greenland Street
London NW1 0ND
mail@ksrarchitects.com
t: +44 (0)20 7592 5500
www.ksrarchitects.com

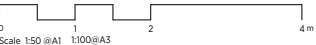
Oak Hill House
Elevation 2 (NE)

Date: Nov 2018	Status: Planning
Scale: 1:50 @A1	© KSR Architects
Project Ref: 18018	Drawing No: P302

GENERAL NOTES:
This drawing is copyright of KSR architects. This drawing must be read in conjunction with the Designer's Risk Assessment, specification and all other relevant documentation and drawings. KSR architects accept no liability for any expense, loss or damage of whatever nature and however arising from any variation made to this drawing or in the execution of the work to which it relates which has not been referred to them and their approval obtained.
Areas are based on unchecked survey and are approximate only. Do not scale from this drawing or the digital data, only figured dimensions are to be used. Refer to linear scale for guidance. Check all dimensions on site prior to carrying out any works and advise any discrepancy



1 Elevation 3
1:50



KSRARCHITECTS
KSR Architects LLP mail@ksrarchitects.com
14 Greenland Street t: +44 (0)20 7692 5000
London NW1 0ND www.ksrarchitects.com

Oak Hill House
Elevation 3 (NW)

Date: Nov 2018	Status: Planning
Scale: 1:50 @A1	© KSR Architects
Project Ref: 18018	Drawing No: P303

GENERAL NOTES:
This drawing is copyright of KSR architects. This drawing must be read in conjunction with the Designer's Risk Assessment, specification and all other relevant documentation and drawings. KSR architects accept no liability for any expense, loss or damage of whatsoever nature and however arising from any variation made to this drawing or in the execution of the work to which it relates which has not been referred to them and their approval obtained.
Areas are based on unchecked survey and are approximate only. Do not scale from this drawing or the digital data, only figured dimensions are to be used. Refer to linear scale for guidance. Check all dimensions on site prior to carrying out any works and advise any discrepancy



1 Elevation 4
1:50



KSRARCHITECTS
KSR Architects LLP
14 Greenland Street
London NW1 0ND
mail@ksrarchitects.com
t: +44 (0)20 7692 5000
www.ksrarchitects.com

Oak Hill House
Elevation 4 (SW)

Date:	Nov 2018	Status:	Planning
Scale:	1:50 @A1	©:	KSR Architects
Project Ref:	18018	Drawing No:	P304
Revision:			