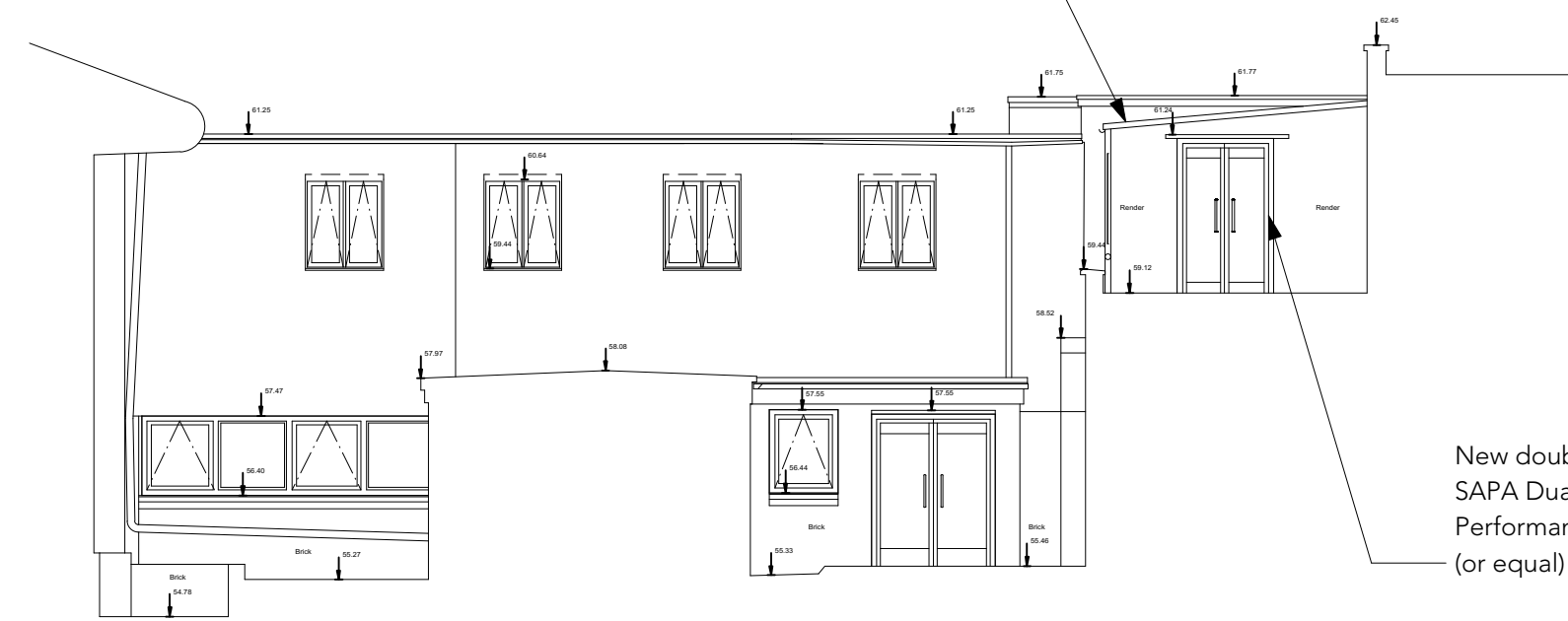


REVISION HISTORY

REV	DATE	DESCRIPTION

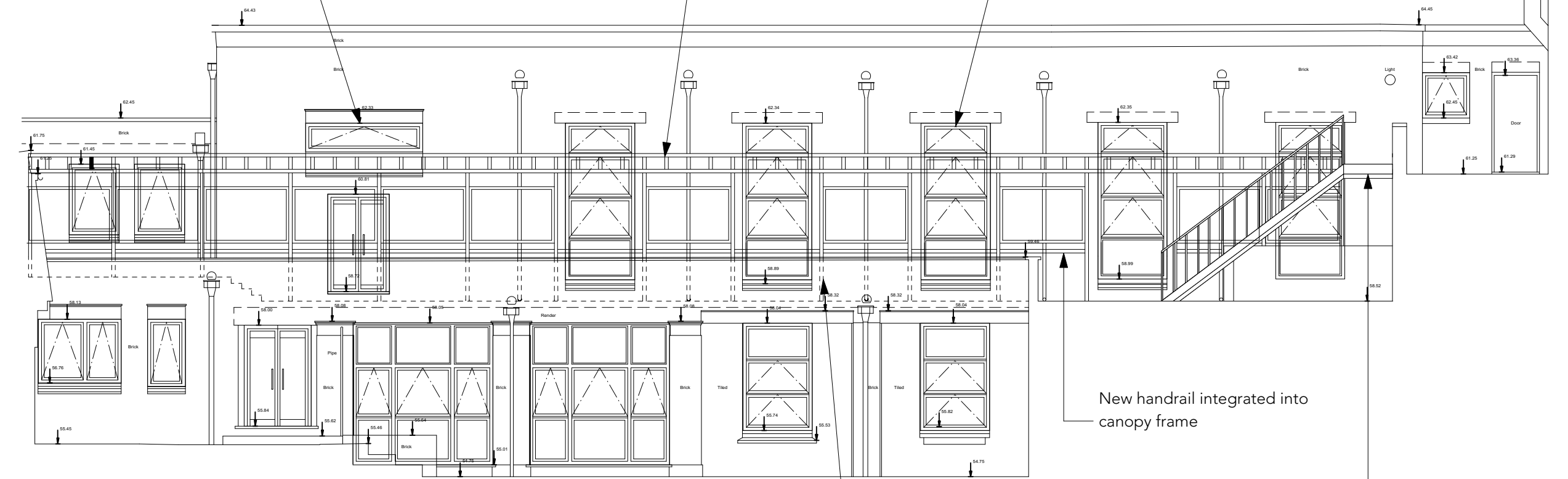
New aluminium frame to external walkway. Solar reduction quality, single glazed roof and wall panels for weather protection. Opening to top and bottom of glazed side panels for ventilation. Final design to be confirmed. Side panels to sit in line with hall windows



1 Existing Internal South Elevation (8)

Datum 50.000m A.O.D

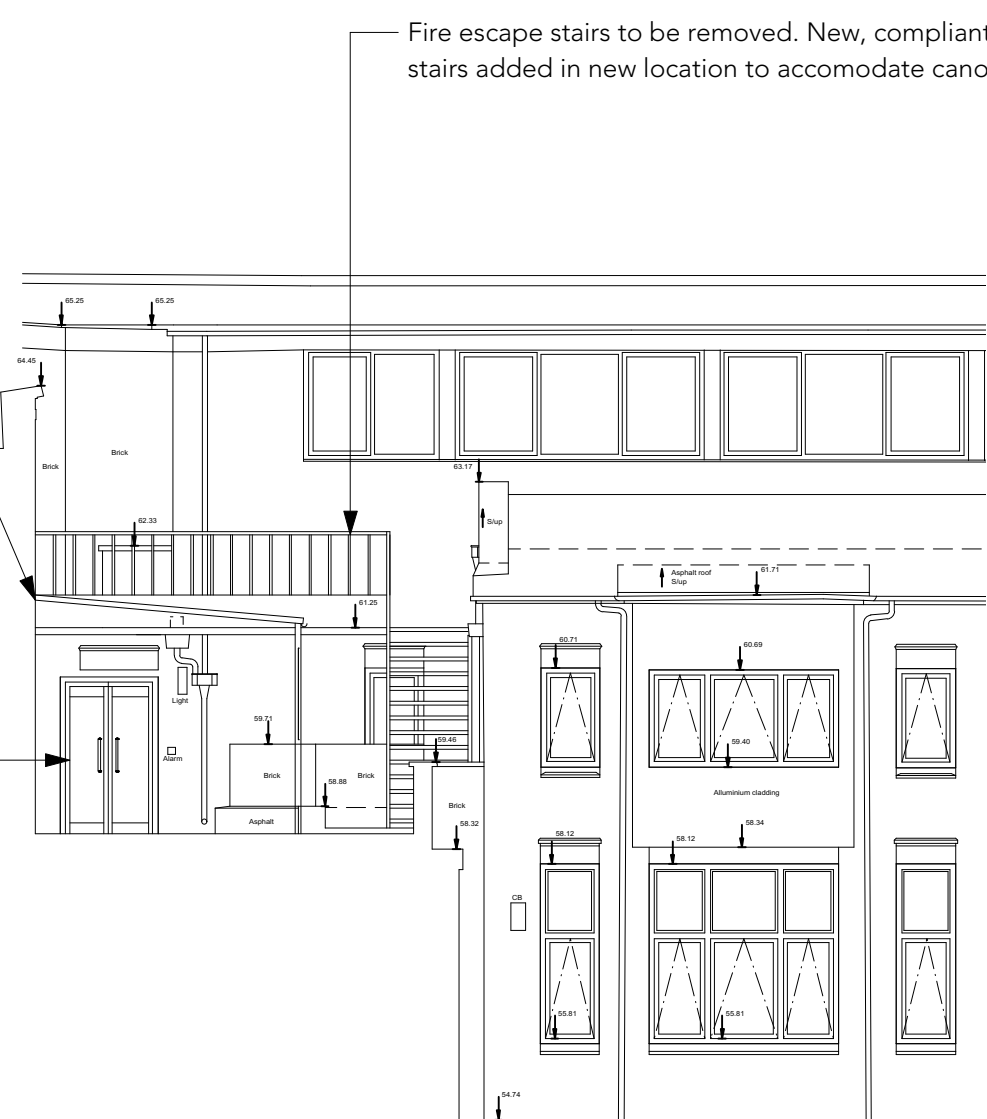
Brick infill to structural opening to accommodate canopy fixing plate. Proposed replacement window. Double Glazed, single aluminium unit SAPA DualFrame 75mm Si System (or equal) in RAL 7009 Grüngrau. Top-hung projecting casement windows with standard beading



2 Existing Internal South-East Elevation (13)

Datum 50.000m A.O.D

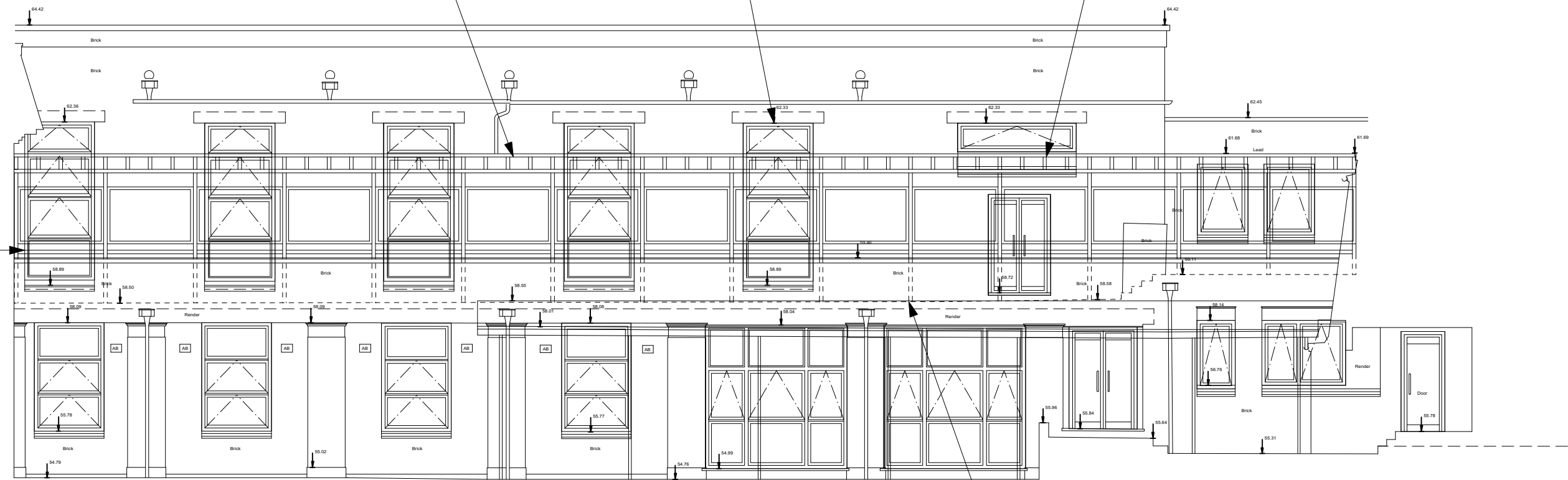
New aluminium frame to external walkway. Solar reduction quality, single glazed roof and wall panels for weather protection. Opening to top and bottom of glazed side panels for ventilation. Final design to be confirmed. Side panels to sit in line with hall windows



3 Existing Internal North Elevation (14)

Datum 50.000m A.O.D

Proposed replacement window. Double Glazed, single aluminium unit SAPA DualFrame 75mm Si System (or equal) in RAL 7009 Grüngrau. Top-hung projecting casement windows with standard beading



4 Existing Internal North-East Elevation (12)

Datum 50.000m A.O.D

Do not scale from drawings
Confirm all dimensions on site prior to manufacture
Confirm discrepancies with Architect prior to proceeding
Refer to all Engineers' documentation

job no	William Ellis School Highgate	notes
598		
date	Proposed Hall Elevations	dwg. title
28/11/18		
Client:	William Ellis School	
Scale:	1:100 @ A1 / 1:200 @ A3	
Scale: 1:100 @ A1 / 1:200 @ A3		
dwg. no	598_P118	rev. no.
PLANNING		
© Sarah Wigglesworth Architects		
T +44 (0)20 7607 9200 F +44 (0)20 7607 5800		
E mail@swarch.co.uk W www.swarch.co.uk		