



4 Chalcot Crescent, NW1

Landscape Statement

11th December 2018

*Project Agent :
Amelia Hunter
Architect (BSc/MA/arb)*

*Studio Weave | Architecture 00
amelia.hunter@studioweave.com
020 7099 1922*

I. Landscaping Statement

a. Existing Garden

i. Summary of works

The garden at 4 Chalcot Crescent consists of established perennial plants, climbers, some bushes and a small maple tree. The garden has a 'romantic' atmosphere and the climbing plants elegantly frame the house apertures and the garden walls. The garden is paved in flag stones that have become loose in places and are very slippery in damp and/or wet weather.

The proposal is to maintain the verdant foliage as much as possible, with protection to the tree & plant life during the building works. The garden level in front of the house is proposed to be lowered to match the permissioned basement level and therefore encourage a seamless blend from inside to outside spaces. The garden will be peppered with potted plants and a perimeter bed to encourage a biodiverse and green landscape.

ii. Tree & Plant Audit

T1 - 'Acer triflorum'
3 flowered maple

T2 - 'Laurus nobilis'
Laurel Tree

~ Perennials : bushes and climbing plants.

iii. Proposed Earthworks

Lowering the garden level in front of the house, applying a retaining wall and full width steps - at single and double increments to allow the access to the upper garden and to act as platforms for sitting and potted plants. The steps are to continue to paving surface applied to the ground level and are to be adorned with gazed, decorative tiles highlighting stair nosing.

iv. Long -Term Maintenance

The new pavings will be slip and algae resistant and therefore will require brushing and washing periodically. All necessary plants will require pruning.

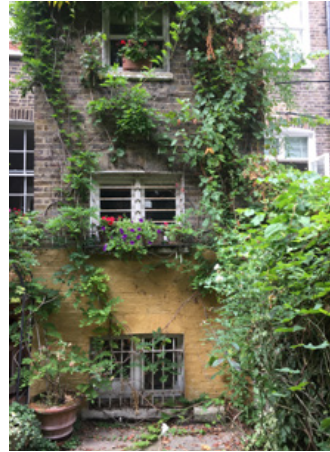


Figure 51 : Looking back towards the rear elevation of the closet wing extension.



Figure 52 : Cracks & damage to party wall between no. 4 & no. 2 Chalcot has

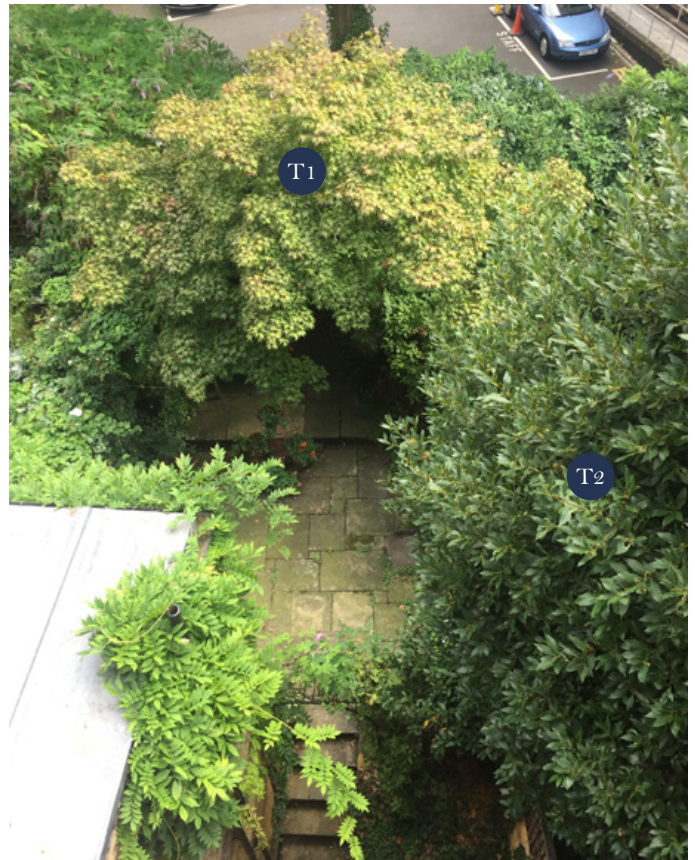
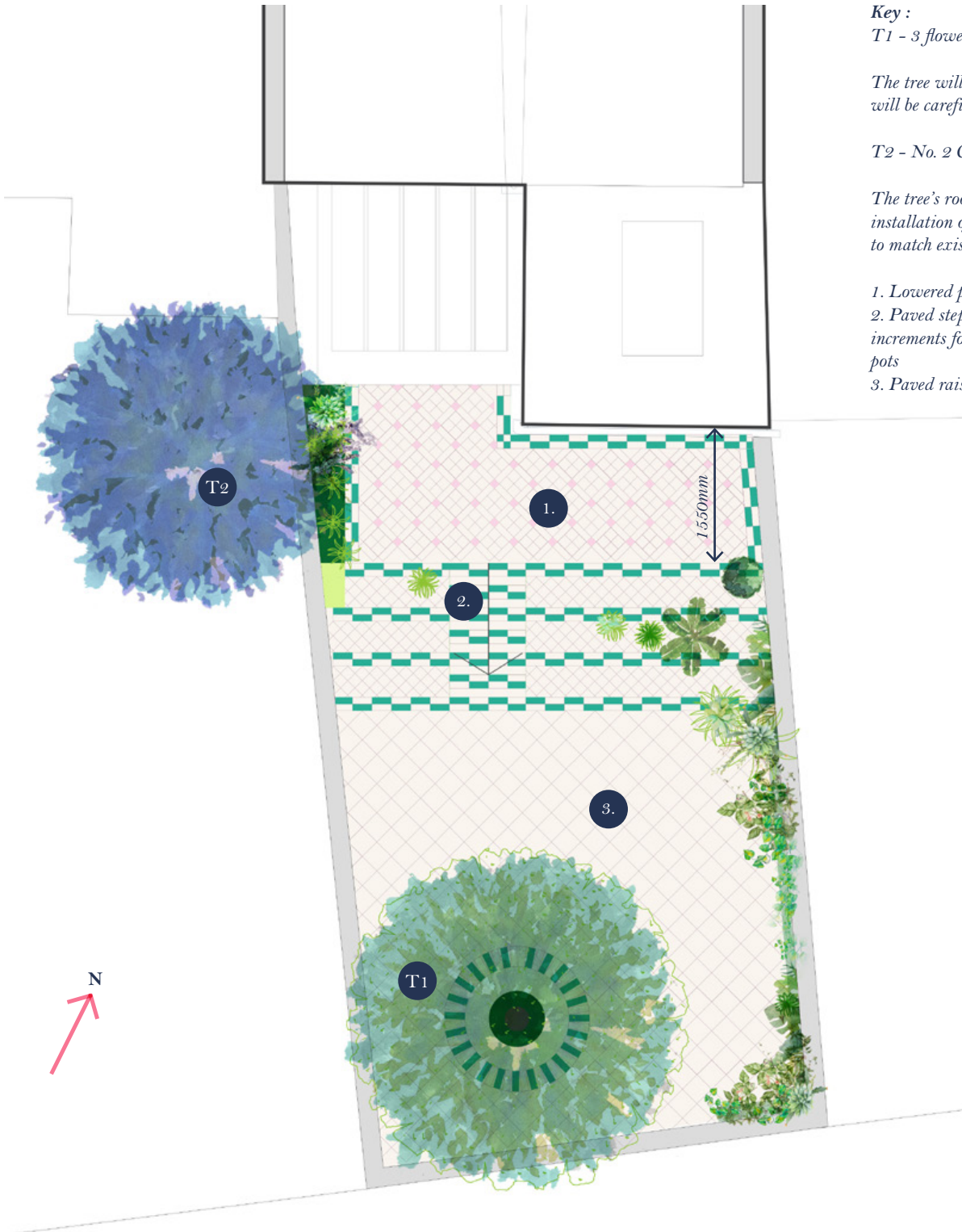


Figure 53 : 4 Chalcot Crescent garden, from above.

I. Landscaping Statement

b. Landscape Proposal



Key :

T1 - 3 flowered maple

The tree will be protected and new pavings will be carefully laid circling its trunk.

T2 - No. 2 Chalcot Crescent laurel tree

The tree's roots will be protected on the installation of a new party wall boundary to match existing.

1. Lowered paved garden

2. Paved steps - single and double increments for sitting on and placing plant pots

3. Paved raised garden



Figure 55 :
Precedent images
of the of the
paving materiality

Figure 54 : Artists impression of landscape scheme in plan