

THIS DRAWING IS PROTECTED BY COPYRIGHT - FIGURED DIMENSIONS ONLY TO BE TAKEN FROM THIS DRAWING. DIMENSIONS TO BE CHECKED ON SITE AND ANY DISCREPANCIES REPORTED TO THE ARCHITECT IMMEDIATELY.				
PURPOSE OF ISSUE - A = FOR COMMENT/ CO-ORDINATION B = FOR INFORMATION C = FOR APPROVAL D = FOR TENDER E = FOR CONSTRUCTION F = FINAL DESIGN DRAWING				
Rev	Rev Date	Revision Description	Drawn/ Checked	Purpose of Issue
A	22/03/2017	General Update	VS/MH	C
B	31/03/2017	General Update	VS/MH	C
C	11/04/2017	General Issue	VS/MH	A
D	13/04/2017	General Update	VS/MH	A
E	28/04/2017	Pricing Issue	VS/MH	P
F	12/05/2017	For Planning	VS/MH	C
G	25/05/2017	For Planning	VS/MH	P
H	01/12/2017	For Planning	FY/MH	P
J	15/03/2018	Issued for Information	FY/MH	B
K	20/06/2018	Updated to show VE changes	FY/MH	A
L	06/07/2018	Update to show modified external wall thickness	FY/MH	A
M	18/07/2018	Updated to show Raico Framing systems and Kalwall panels new dimensions	FY/MH	A
N	24/10/2018	Issued for construction	FY/MH	E
P	19/11/2018	For Planning	FY/MH	P

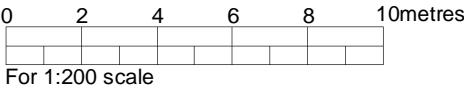
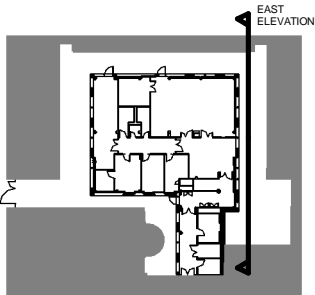
Provisional Suppliers:

MACAI: SFS, TRESPA panel and linings, Wetherby render panels, associated cappings and Flashings and Kingspan insulated Panels

STRUCTURA: kalwall, louvres, windows, external doors*, ironmongery*, associated flashings and infill panels

- 01 Brickwall
- 02 Kalwall
- 03 Aluminium PPC windows
- 04 PPC insulated metal panels
- 05 Aluminium Polyester Powder Coated doors
- 06 Self-colored Render
- 07 Steel PPC louvres
- 08 Galvanised railings & Stairs by Hillcrest
- 09 Removable panel behind screen for MRI replacement
- 10 Quench pipe & MRI Emergency extract
- 11 Ducts intake/outake behind the louvres
- 12 Penthouses
- 13 Steel PPC Flash surface
- 14 Isolation Panel between mullions
- 15 Trespa panel

NOTE: Tobe read in conjunction with 16021(02)033- (02)036, 016021(04)031 & 16021(04)032



FOR PLANNING

Proposed East Elevation	16021	(02)019	P
	JOB NUMBER	DRAWING NUMBER	REV
Great Ormond Street Hospital for Children - NHS Foundation Trust	14/12/2016	As indicated	
	DATE	SCALE @ A3	

Ansell & Bailey Ltd Chartered Architects . 17 Bowling Green Ln . London . EC1R 0QB . 020 73870141 . architects@ansellandbailey.com

ANSELL + BAILEY