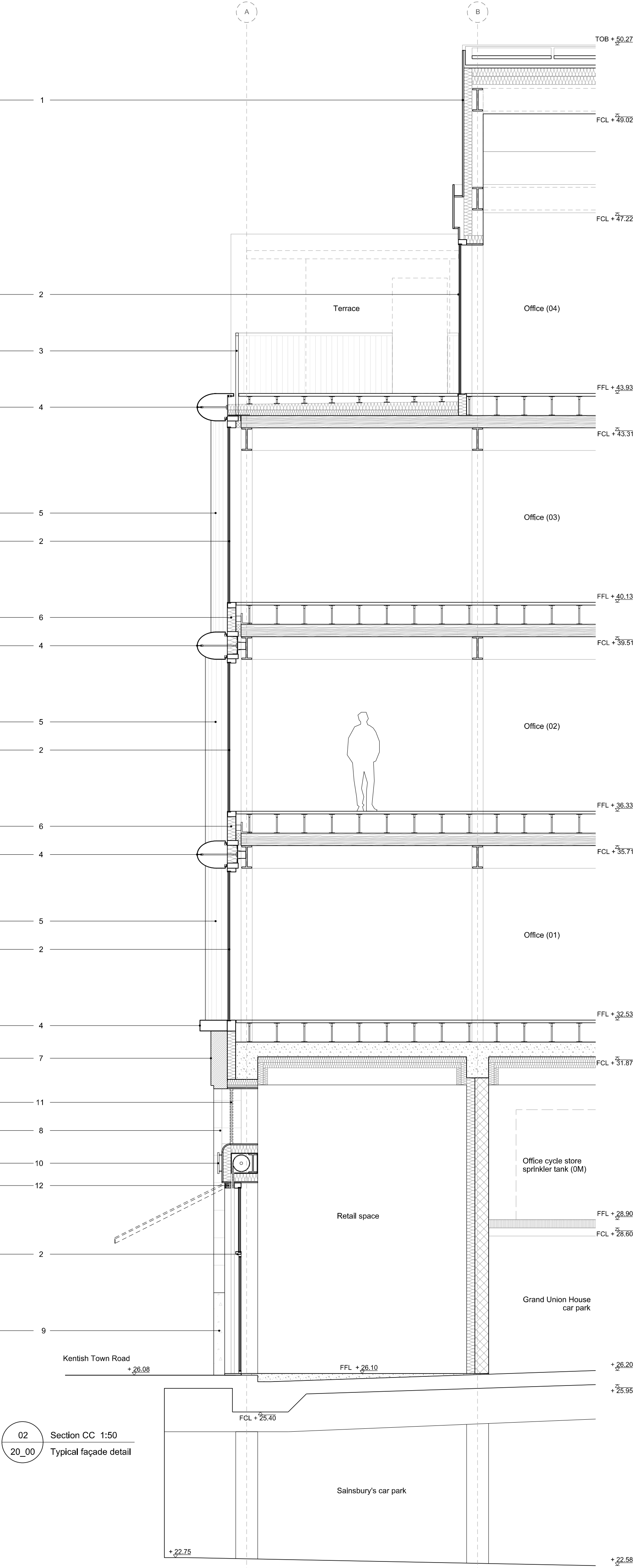


01 East elevation 1:50
20_00 Typical façade detail



02 Section CC 1:50
20_00 Typical façade detail

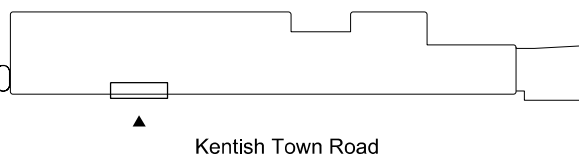
Notes

Do not scale from drawings
Discrepancies to be reported immediately to the Architect
To be read in conjunction with all relevant Architects',
Landscape Architects', and Structural Engineers' drawings.
All existing site, tree and building information has been
compiled from different sources.
All dimensions to be checked on site.

Key:

- 1 Powder coated aluminium cladding
- 2 Powder coated aluminium glazing frame
- 3 Powder coated metal balustrade
- 4 Extruded anodised aluminium cill fascia
- 5 Corrugated extruded anodised aluminium fascia
- 6 Patterned anodised aluminium spandrel
- 7 Corrugated glazed ceramic panel
- 8 Flat glazed ceramic tiling
- 9 Exposed aggregate precast pigmented concrete base
- 10 Backlit signage
- 11 Anodised mesh vent
- 12 Retractable canvas awning

Rev.	Date	Description	Drawn	Check
------	------	-------------	-------	-------



AP

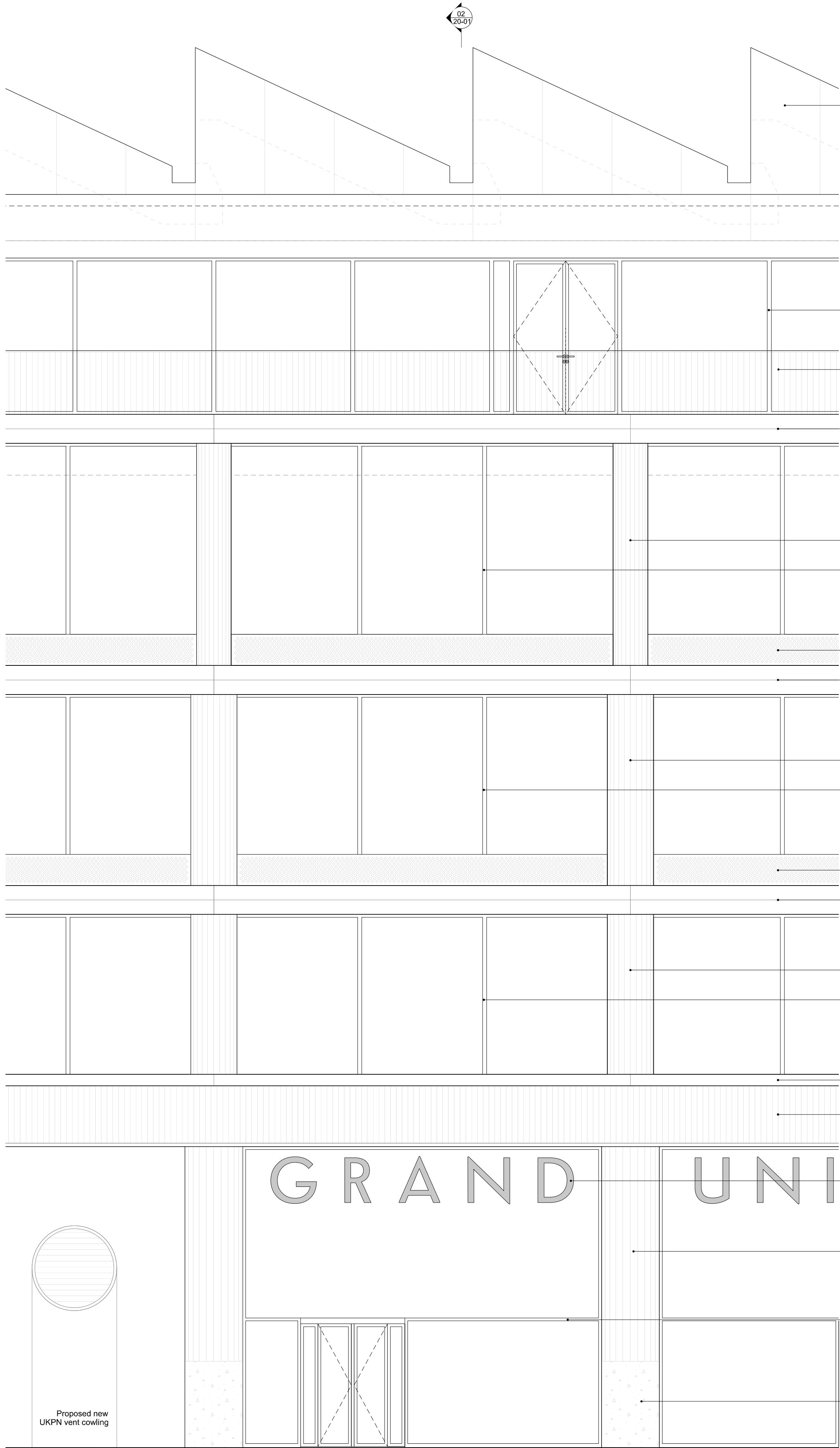
Andrew Phillips
40 Bermondsey Street
London SE1 7UD
Tel: +44 (0)203 102 1676
www.andrewphillips.co

Project	Project number
Grand Union House London	120

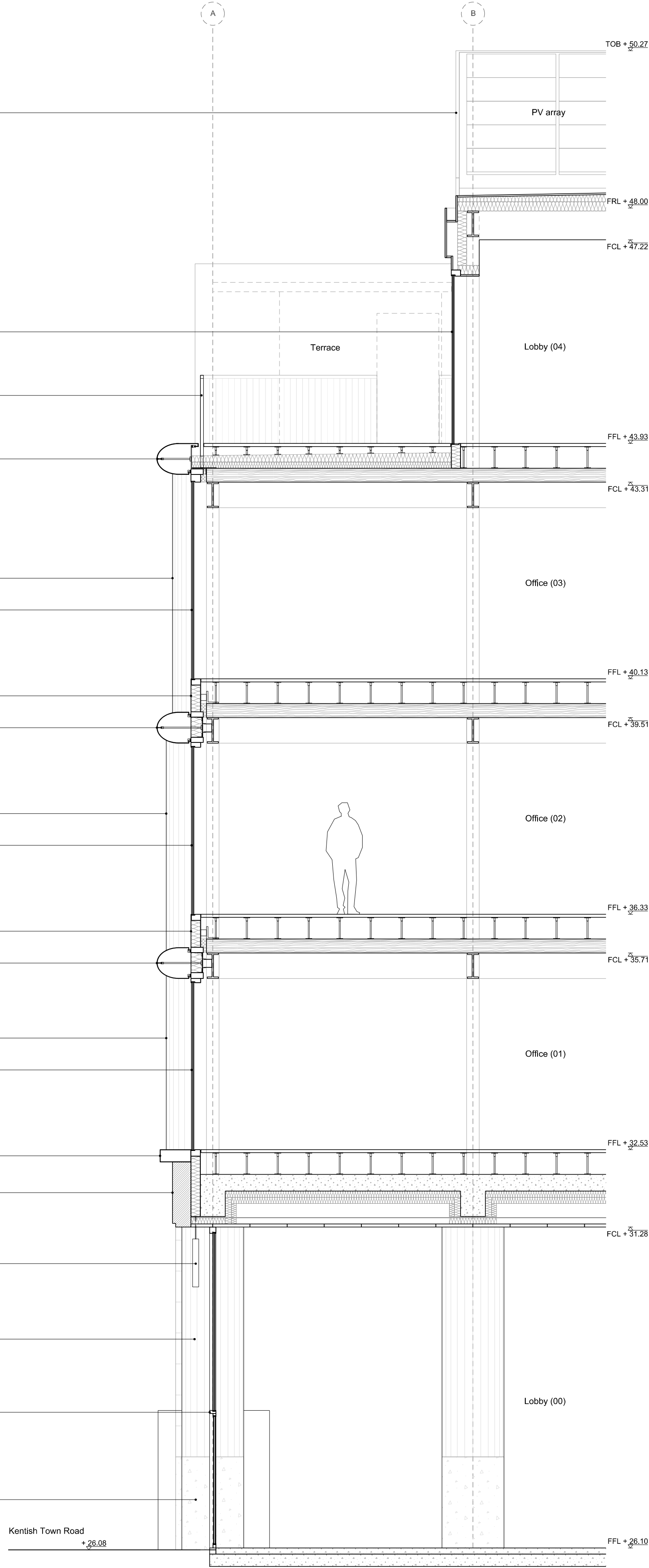
Client	Camden Mixed Developments Limited
--------	-----------------------------------

Drawing name	Drawing number
Typical façade detail Office, Kentish Town Road (west)	20_00

Date	07/12/2018	Issue
Scale / Format	1:50/A1	Planning 00
Drawn / Checked	JC / JC	
Approved	AP	
CAD Reference	120_20_00	



01 East elevation 1:50
20_01 Typical façade detail



02 Section DD 1:50
20_01 Typical façade detail

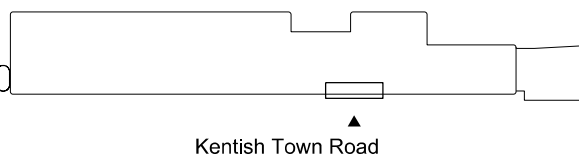
Notes

Do not scale from drawings
Discrepancies to be reported immediately to the Architect
To be read in conjunction with all relevant Architects',
Landscape Architects', and Structural Engineers' drawings.
All existing site, tree and building information has been
compiled from different sources.
All dimensions to be checked on site.

Key:

- 1 Powder coated aluminium cladding
- 2 Powder coated aluminium glazing frame
- 3 Powder coated metal balustrade
- 4 Extruded anodised aluminium cill fascia
- 5 Corrugated extruded anodised aluminium fascia
- 6 Patterned anodised aluminium spandrel
- 7 Corrugated glazed ceramic panel
- 8 Exposed aggregate precast pigmented concrete base
- 9 Internally lit suspended signage

Rev.	Date	Description	Drawn	Check
------	------	-------------	-------	-------



AP

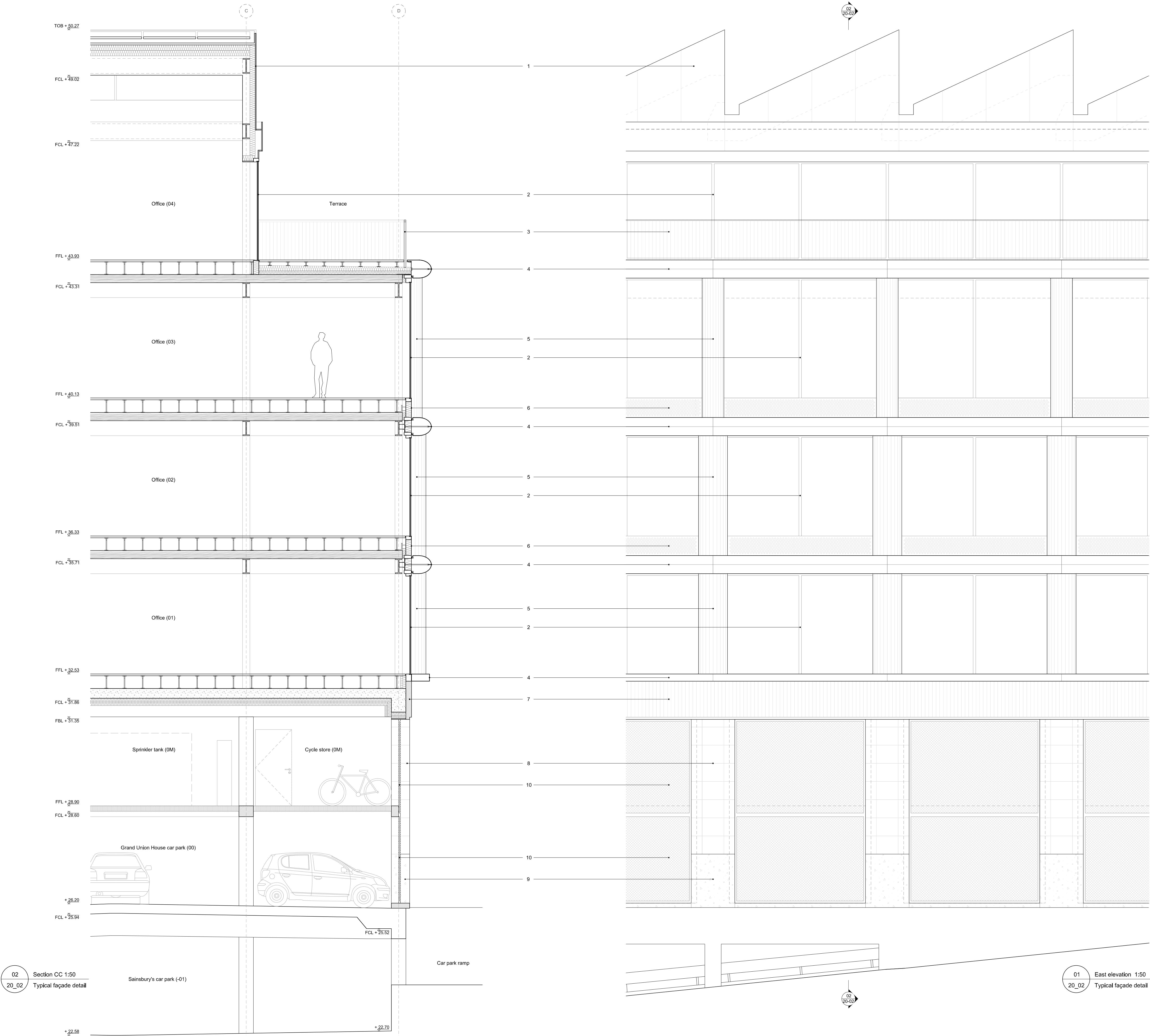
Andrew Phillips
49 Bermondsey Street
London SE1 7UD
Tel: +44 (0)203 102 1676
www.andrewphillips.co

Project	Project number
Grand Union House London	120

Client
Camden Mixed Developments Limited

Drawing name	Drawing number
Typical façade detail Office lobby, Kentish Town Road (west)	20_01

Date	07/12/2018	Issue
Scale / Format	1:50/A1	Planning 00
Drawn / Checked	JC / JC	
Approved	AP	
CAD Reference	120_20_01	

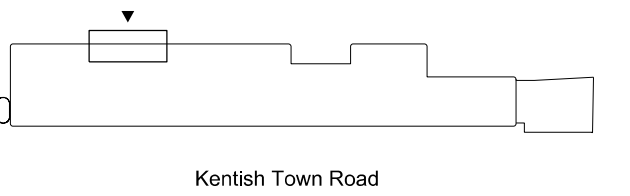


Notes

Do not scale from drawings
Discrepancies to be reported immediately to the Architect
To be read in conjunction with all relevant Architects',
Landscape Architects', and Structural Engineers' drawings.
All existing site, tree and building information has been
compiled from different sources.
All dimensions to be checked on site.

- Key:
- 1 Powder coated aluminium cladding
 - 2 Powder coated aluminium glazing frame
 - 3 Powder coated metal balustrade
 - 4 Extruded anodised aluminium cill fascia
 - 5 Corrugated extruded anodised aluminium fascia
 - 6 Patterned anodised aluminium spandrel
 - 7 Corrugated glazed ceramic panel
 - 8 Flat glazed ceramic façade tiling
 - 9 Exposed aggregate precast pigmented concrete base
 - 10 Perforated mesh panel in anodised finish

Rev.	Date	Description	Drawn	Check
------	------	-------------	-------	-------



AP

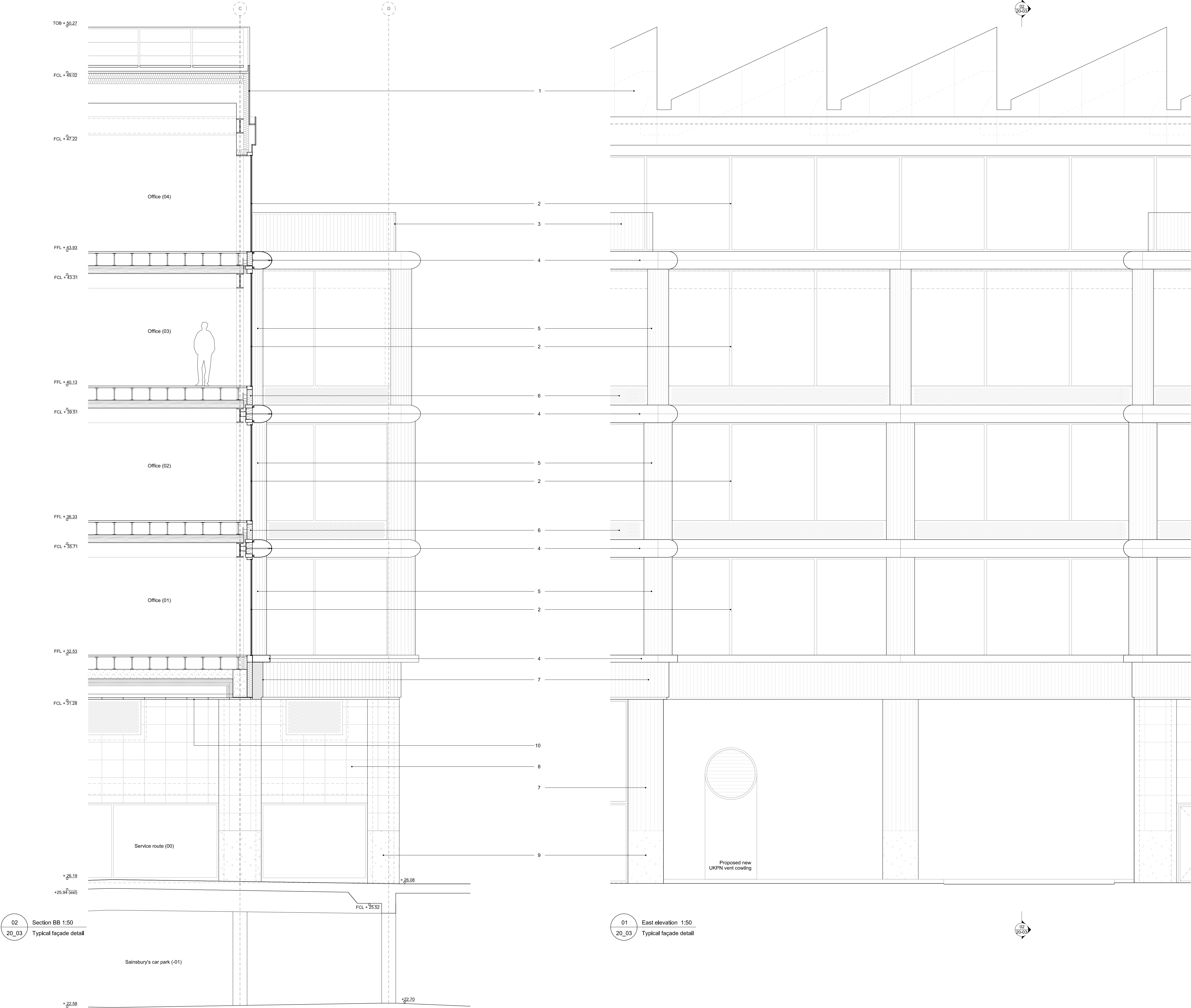
Andrew Phillips
49 Hornsey Street
London SE1 7UD
Tel: +44 (0)203 102 1676
www.andrewphillips.co

Project	Project number
Grand Union House London	120

Client
Camden Mixed Developments Limited

Drawing name	Drawing number
Typical façade detail Sainsbury's yard (east)	20_02

Date	07/12/2018	Issue
Scale / Format	1:50/A1	Planning 00
Drawn / Checked	JC / JC	
Approved	AP	
CAD Reference	120_20_02	



Notes

Do not scale from drawings
Discrepancies to be reported immediately to the Architect
To be read in conjunction with all relevant Architects',
Landscape Architects', and Structural Engineers' drawings.
All existing site, tree and building information has been
compiled from different sources.
All dimensions to be checked on site.

Key:

- 1 Powder coated aluminium cladding
- 2 Powder coated aluminium glazing frame
- 3 Powder coated metal balustrade
- 4 Extruded anodised aluminium cill fascia
- 5 Corrugated extruded anodised aluminium fascia
- 6 Patterned anodised aluminium spandrel
- 7 Corrugated glazed ceramic panel
- 8 Flat glazed ceramic façade tiling
- 9 Exposed aggregate precast pigmented concrete base
- 10 Glazed ceramic ceiling tiles with flush lighting panels

Rev.	Date	Description	Drawn	Check

Kentish Town Road

AP

Andrew Phillips
40 Bermondsey Street
London SE1 7UD
Tel: +44 (0)203 102 1676
www.andrewphillips.co

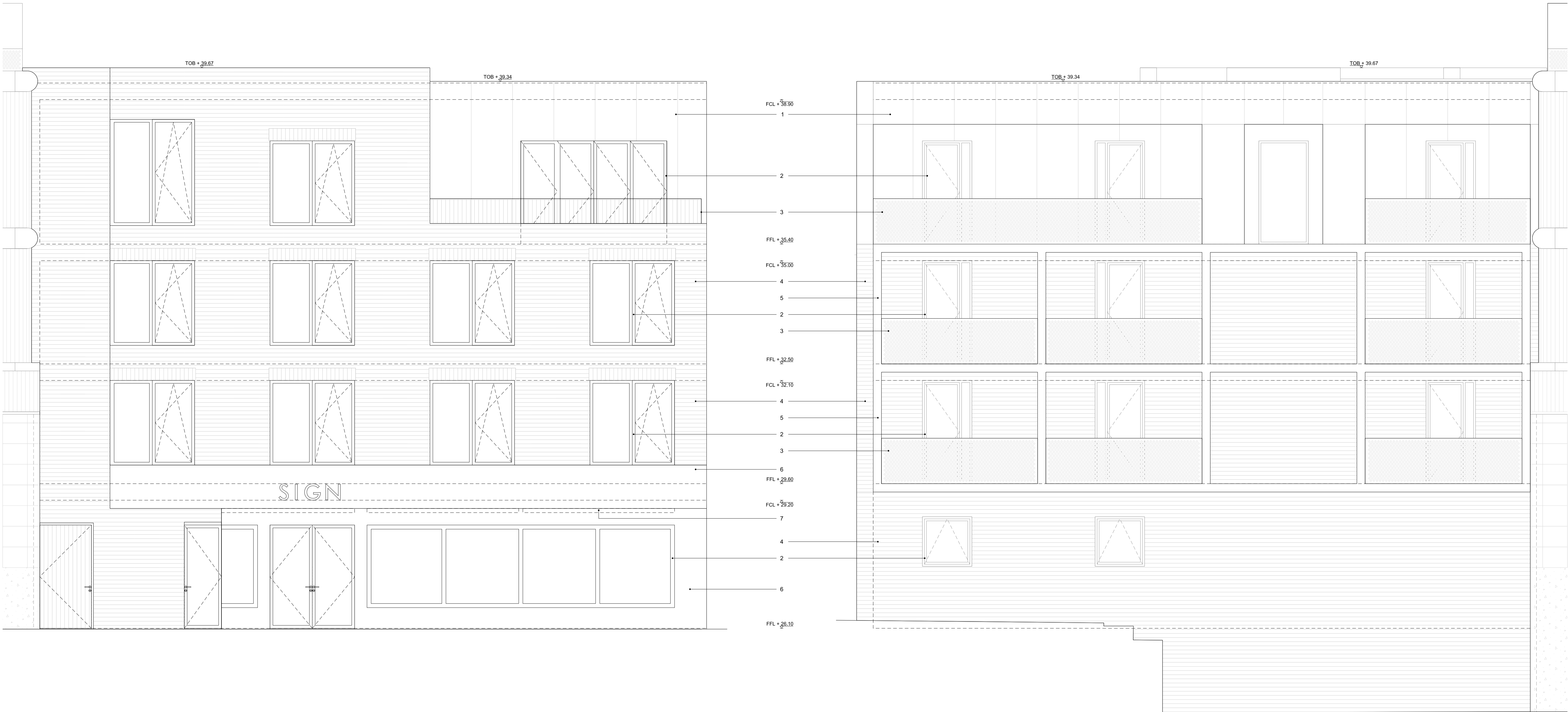
Project	Project number
Grand Union House London	120

Client

Camden Mixed Developments Limited

Drawing name	Drawing number
Typical façade detail Underpass bridge (east)	20_03

Date	07/12/2018	Issue
Scale / Format	1:50/A1	Planning 00
Drawn / Checked	JC / JC	
Approved	AP	
CAD Reference	120_20_03	



01 West elevation 1:50
20_04 Typical façade detail

02 East elevation 1:50
20_04 Typical façade detail

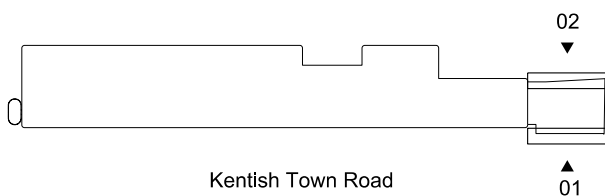
Notes

Do not scale from drawings
Discrepancies to be reported immediately to the Architect
To be read in conjunction with all relevant Architects',
Landscape Architects', and Structural Engineers' drawings.
All existing site, tree and building information has been
compiled from different sources.
All dimensions to be checked on site.

Key:

- 1 Standing seam zinc roofing
- 2 Powder coated aluminium window frame
- 3 Powder coated metal balustrade
- 4 Wire cut smooth facing bricks matching mortar
- 5 Precast concrete facade frame
- 6 Exposed aggregate precast pigmented concrete base
- 7 Retractable canvas awning

Rev.	Date	Description	Drawn	Check



AP

Andrew Phillips
Unit 12, 3 Gunthorpe Street,
London, E1 7RQ
Tel: +44 (0)207 377 9783
www.andrewphillips.co

Project
Grand Union House
London

Client
Camden Mixed Developments Limited

Project number
120

Drawing name
Typical façade detail
Residential block (east & west)

Drawing number
20_04

Date
07/12/2018

Scale / Format
1:50/A1

Drawn / Checked
JC / JC

Approved
AP

CAD Reference
120_20_04

Issue
Planning 00