



Figure 54. 1988: Sainsbury's S elevation.
Source: V&A Collections

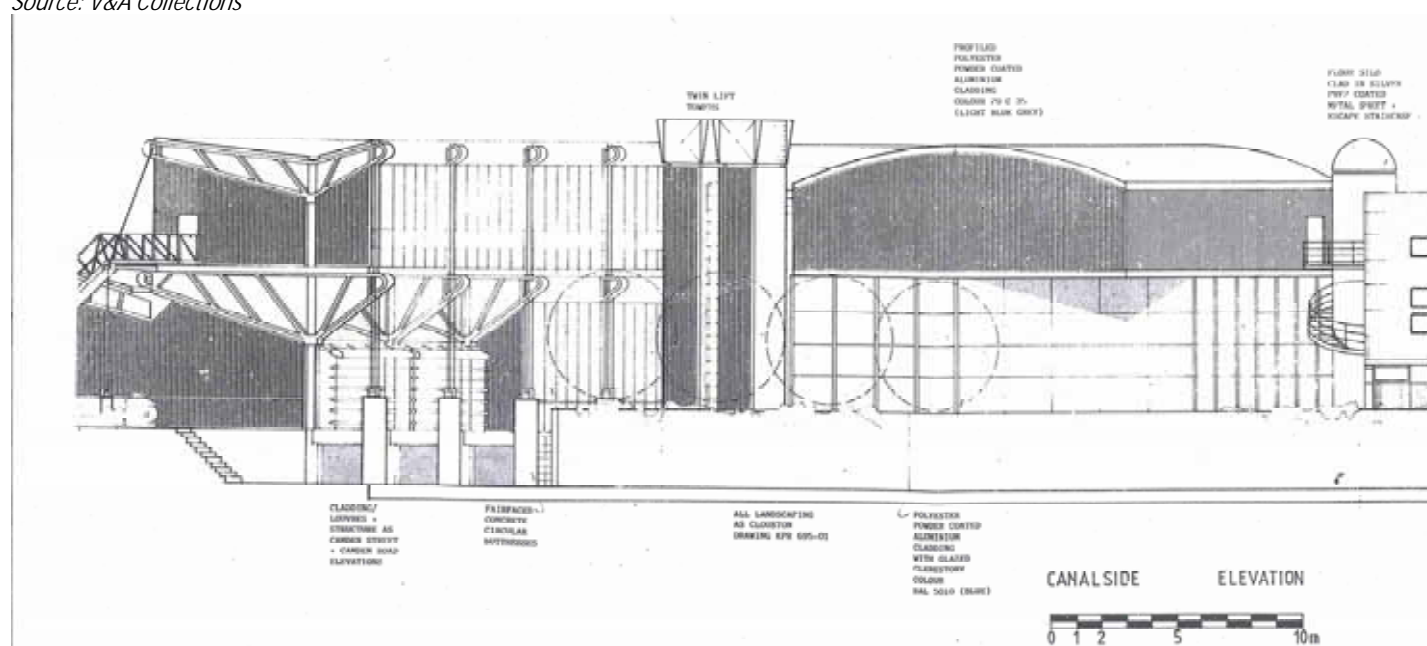
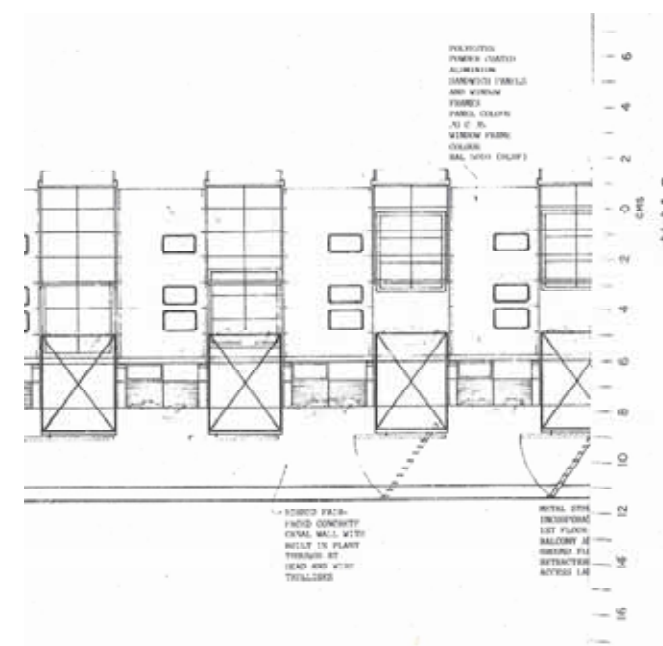


Figure 55. 1985: Canalside elevation
Source: Camden Local Studies



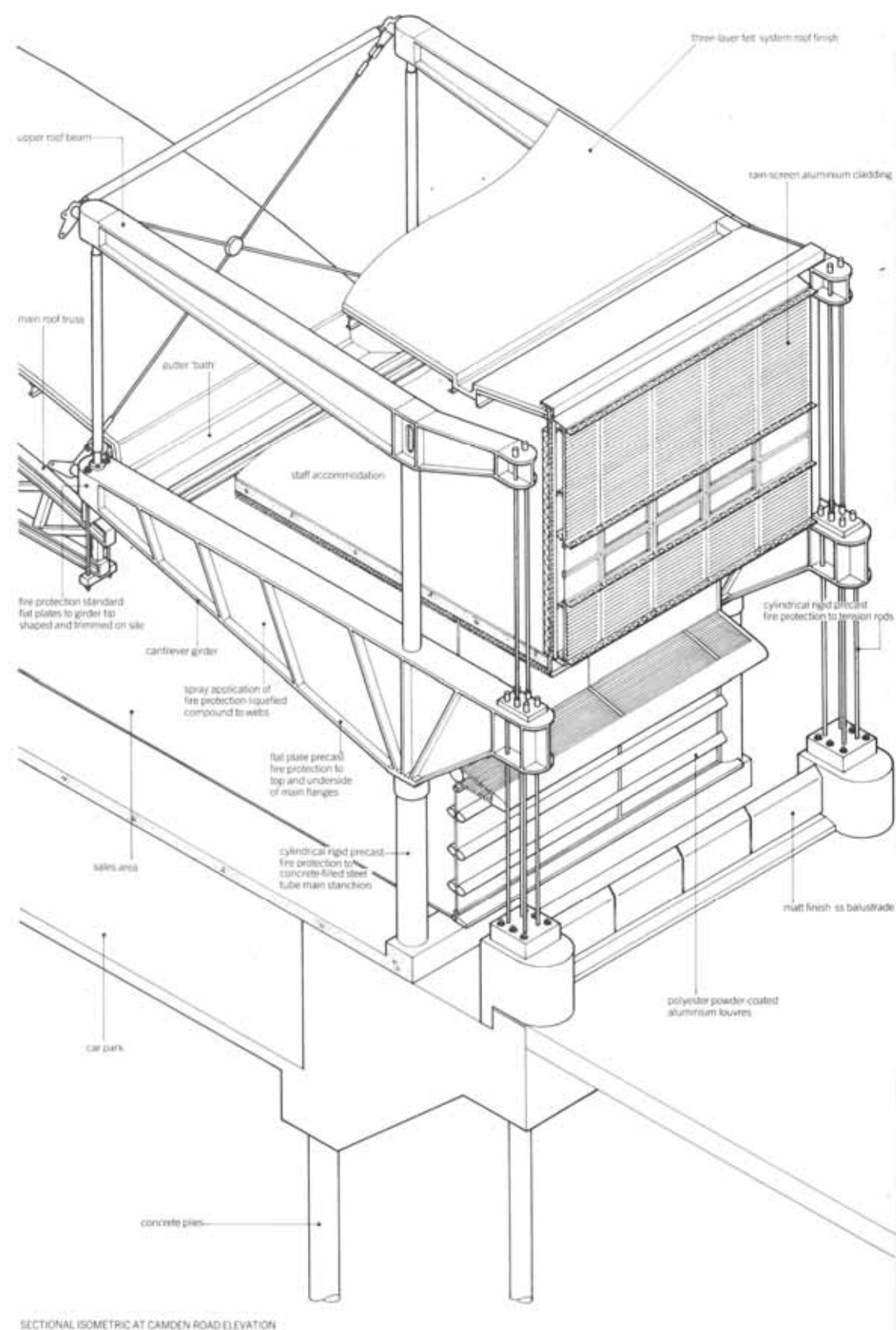


Figure 56. 1988: Isometric elevation of the Camden Road elevation
Source: Architect's Journal Building Library, <http://www.ajbuildingslibrary.co.uk/projects/display/id/1144> (accessed April 2017)

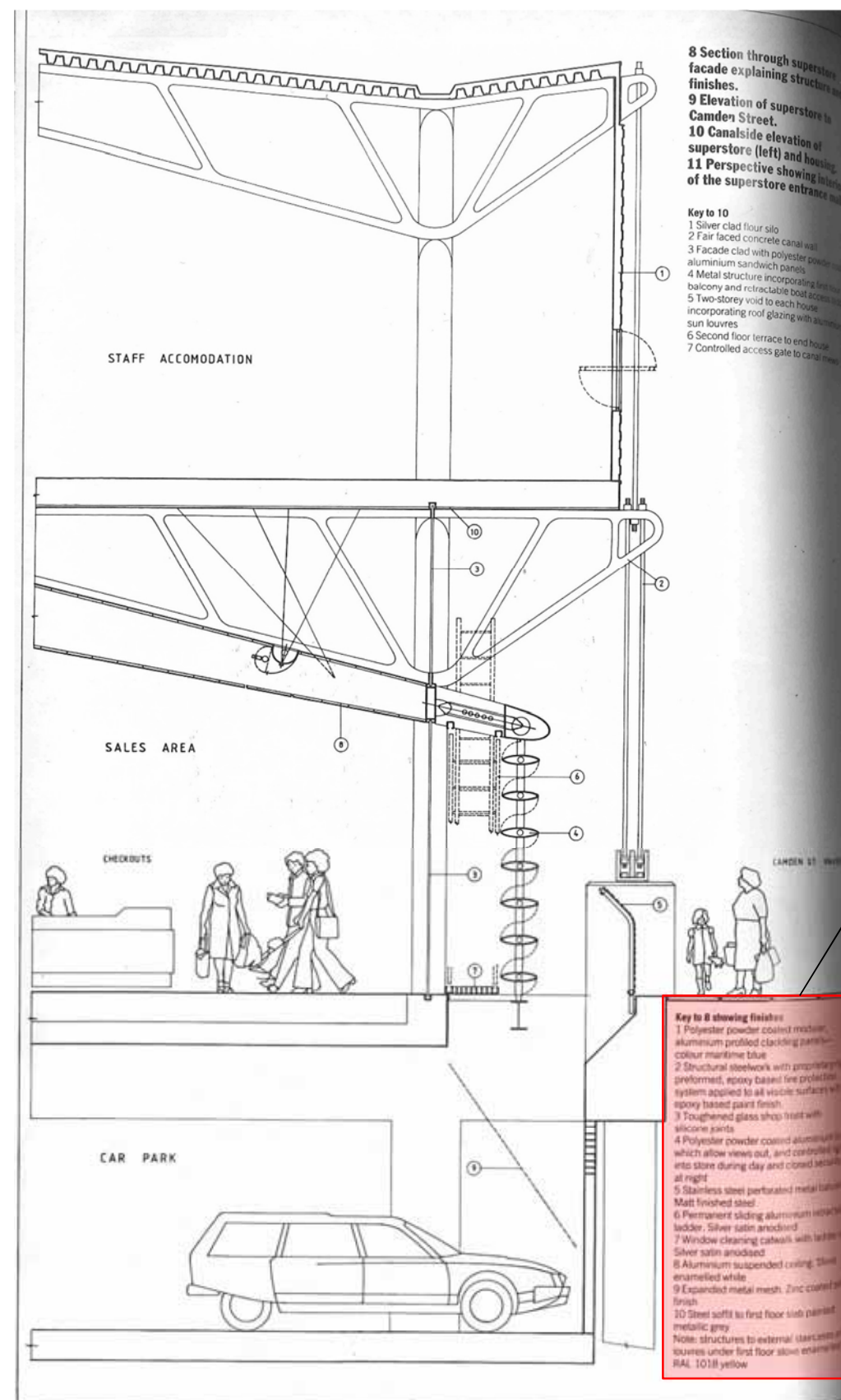


Figure 57. 1986: Section through superstore façade explaining structure and finishes
Source: AJ, August 1986

1. Polyester powder coated modular, aluminium profiled cladding panels – colour: maritime blue
2. Structural steelwork with proprietary rigid, preformed, epoxy based fire protection system applied to all visible surfaces with epoxy based paint finish
3. Toughened glass shop front with silicone joints
4. Polyester powder coated aluminium louvers which allow views out, and controlled light, into store during day and closed security at night
5. Stainless steel perforated metal balustrade. Matt finished steel
6. Permanent sliding aluminium retractable ladder. Silver satin anodised
7. Aluminium suspended ceiling. Stove enamelled white
8. Expanded metal mesh. Zinc coated self-metallic grey
9. Steel soffit to first floor slab painted metallic grey

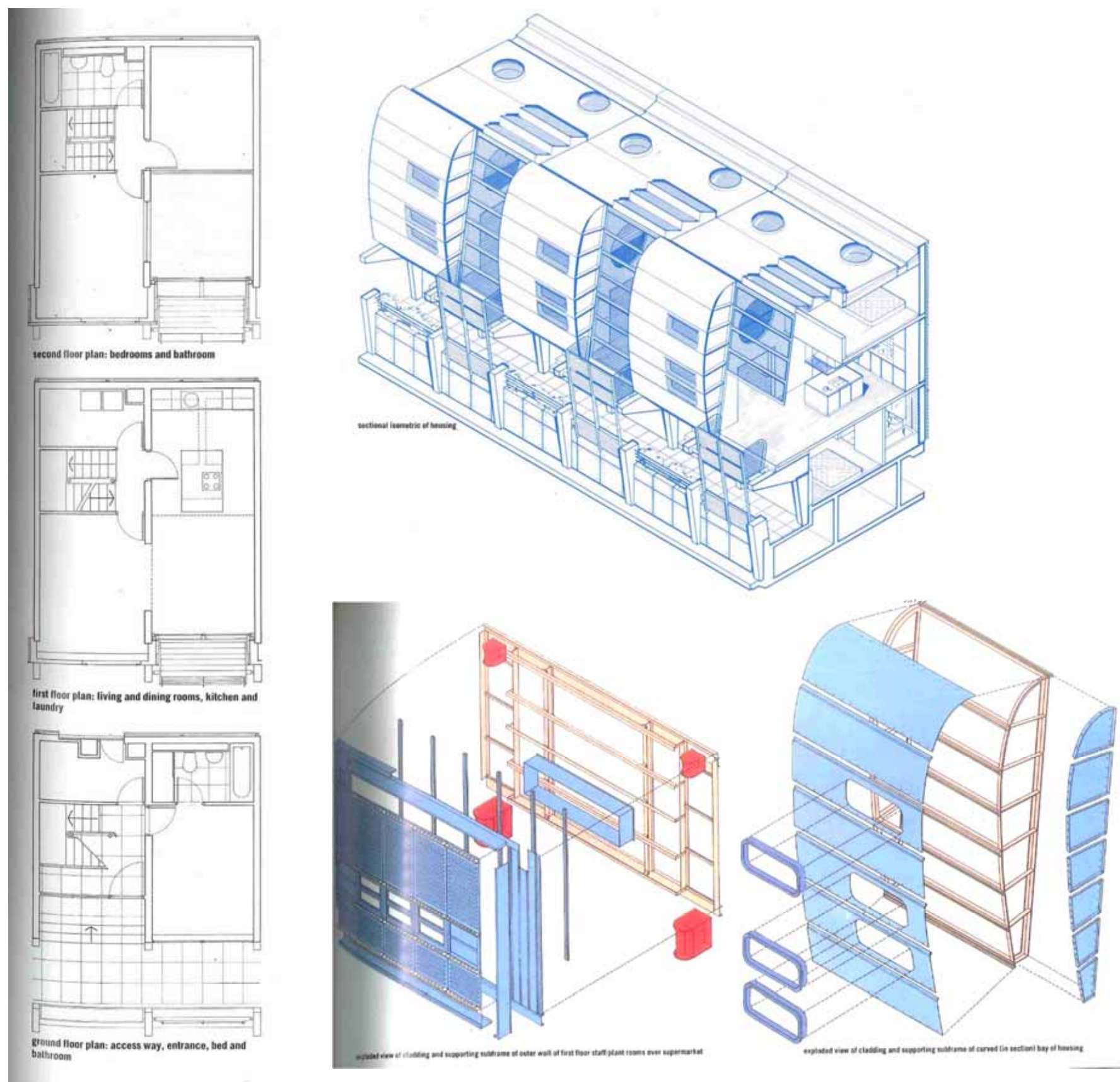
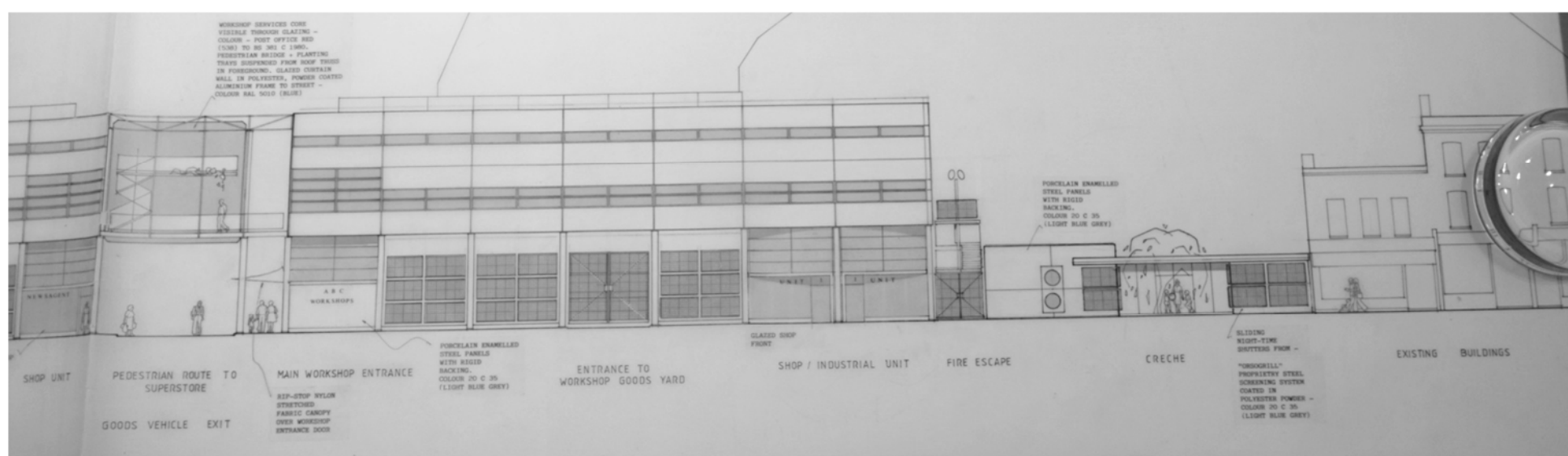


Figure 58. 1989: Floor plans, exploded views and sectional isometric of housing along the canal.
 Source: Architectural Review, October 1989, p. 45



J947 GRAND UNION HOUSE, 20 KENTISH TOWN ROAD, LONDON NW1 9NX
HERITAGE ASSESSMENT: APPENDIX A
j947 2018.12.05 GUH HA_App A (Maps) v1b_FINAL.docx

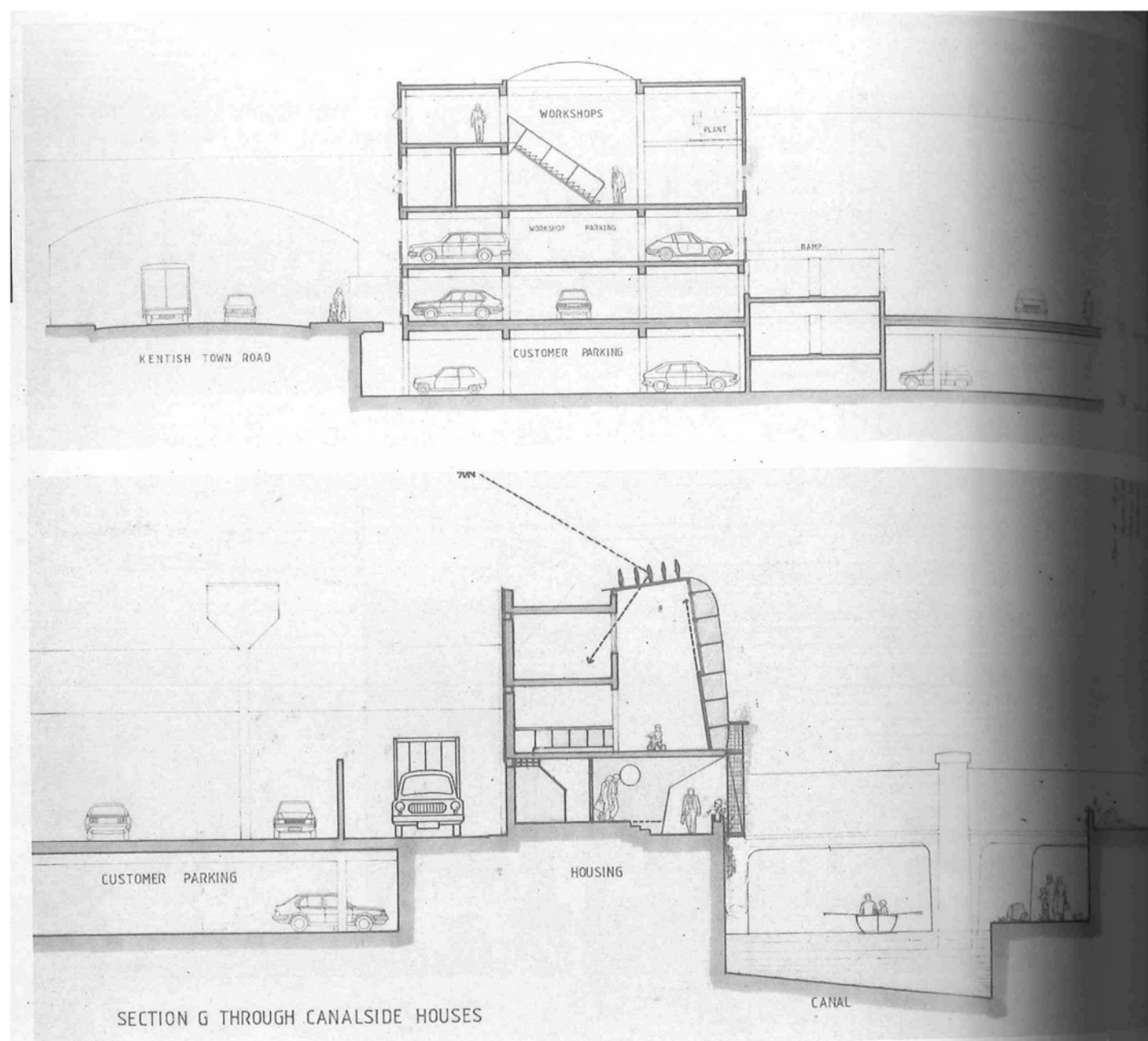


Figure 60. 1986: Above: Section through workshops; below: section through Canalside housing

Source: *AI*, August 1986

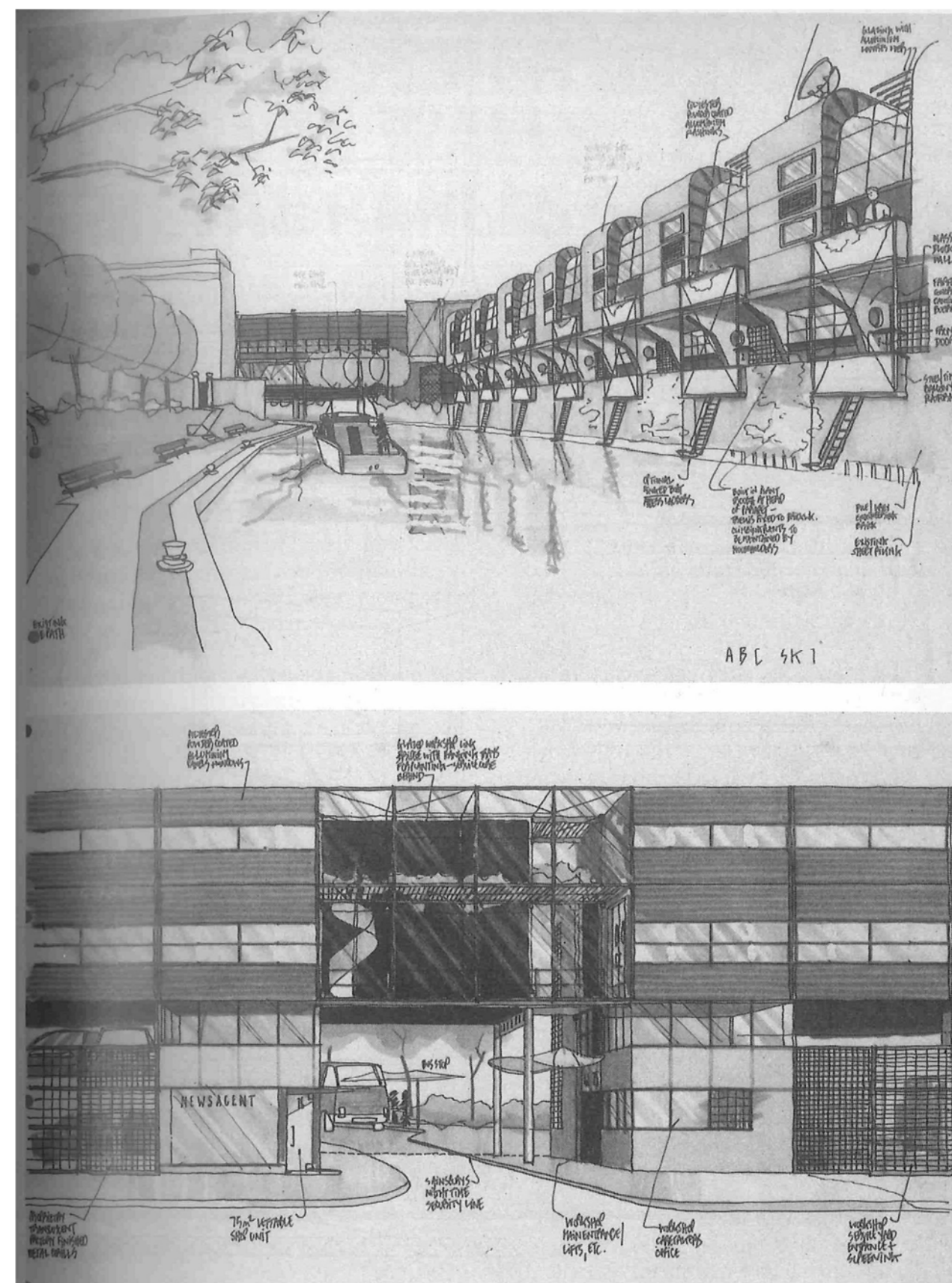


Figure 61. 1986: Above: Perspective of Canalside housing; below: Details of workshop block showing pedestrian route to supermarket and main goods vehicle exit

IV EXAMPLES OF HIGH-TECH ARCHITECTURE



Figure 62. 1973: *Modern Art Glass Factory*, Thamesmead by Norman Foster.
Source: RIBA, <https://www.architecture.com/image-library/imagecache/galleryitems/70821.1.434.434.FFFFFF.jpeg>



Figure 63. 1970-75: *Willis Faber & Dumas* by Foster and Partners (listed Grade I).
Source: Foster and Partners, <http://www.fosterandpartners.com/projects/willis-faber-dumas-headquarters/>.



Figure 64. 1970-75: *Willis Faber & Dumas* (bottom left and right) by Foster and Partners (listed Grade I)
Source: Foster and Partners, <http://www.fosterandpartners.com/projects/willis-faber-dumas-headquarters/>.



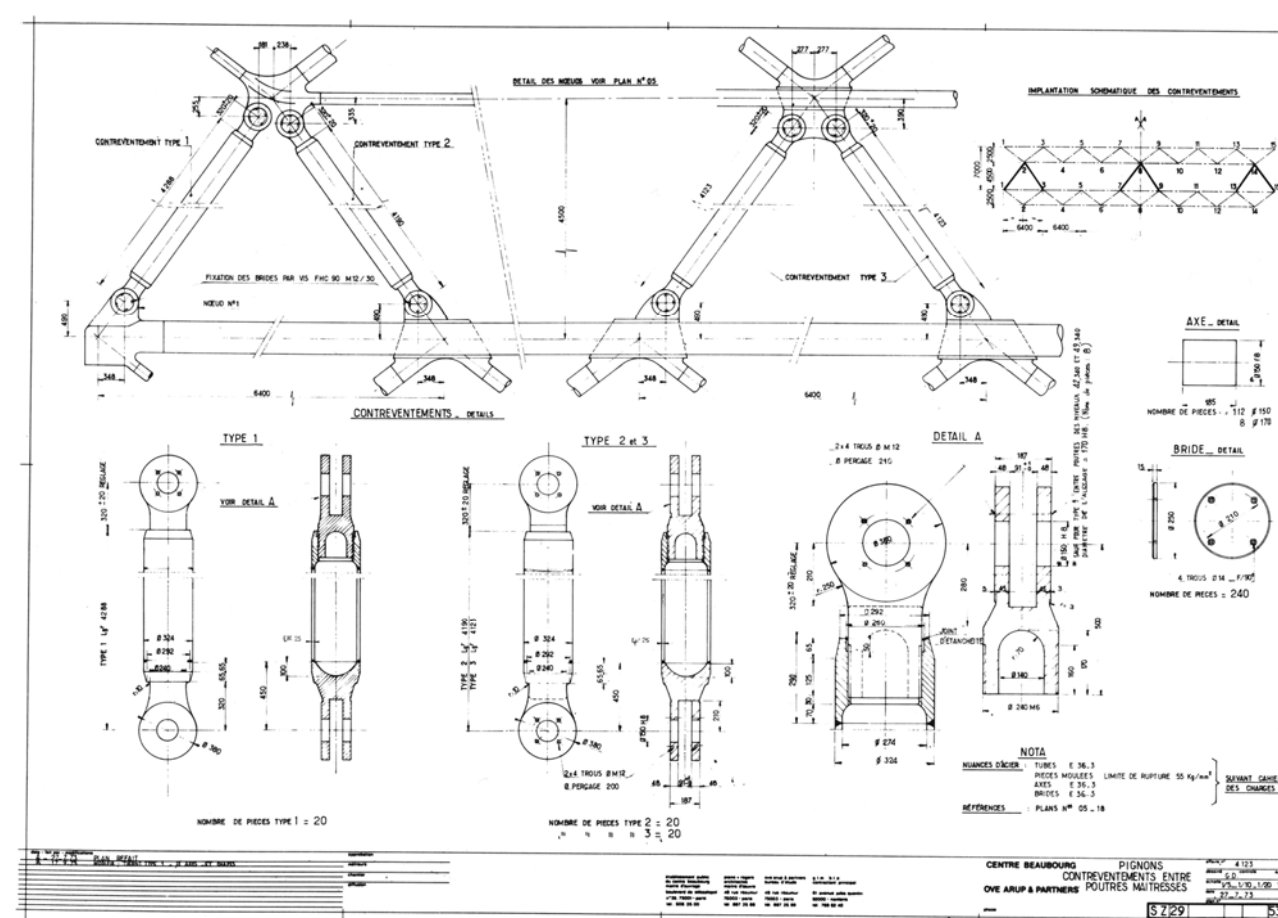


Figure 65. 1971- 1977: Centre Pompidou, Paris by Renzo Piano and Richard Rogers
Source: http://www.parisdigest.com/photos/centre_pompidou_museum_paris_france.jpg

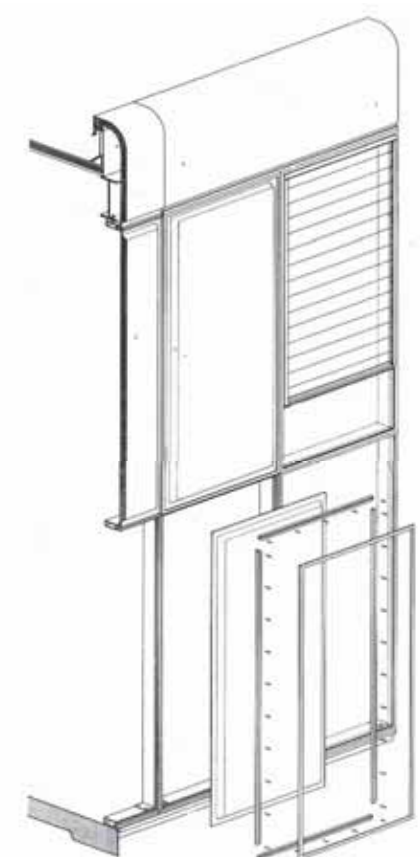
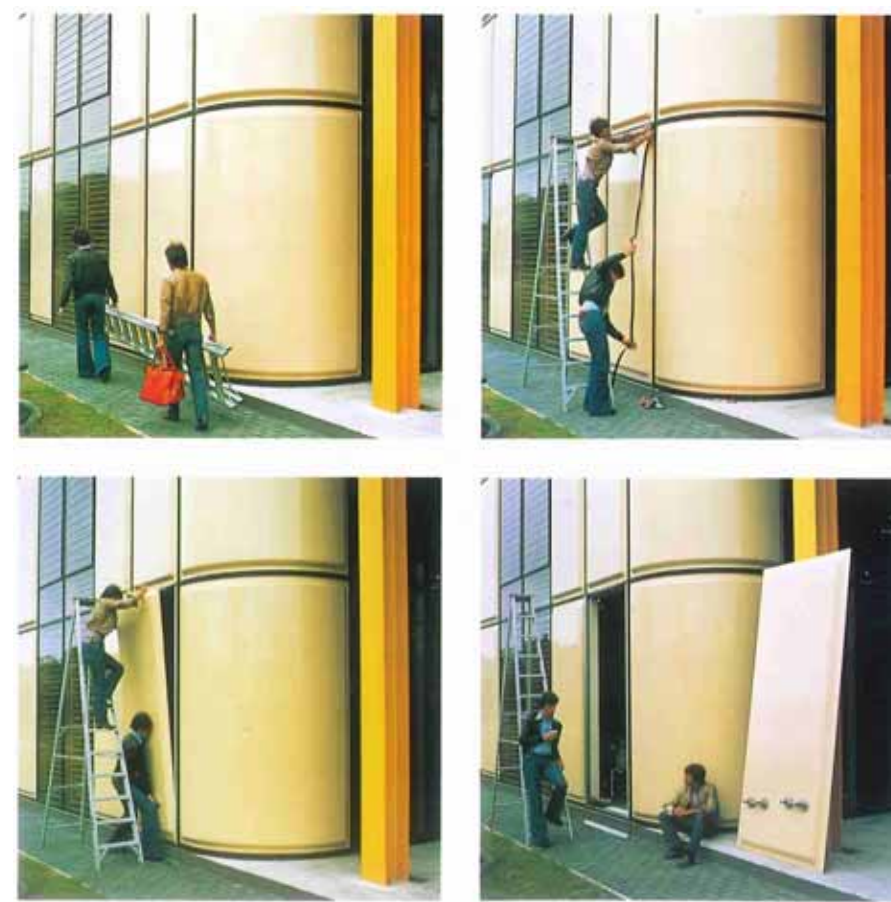


Figure 66. 1976-77: Herman Miller factory, Bath by N. Grimshaw (listed Grade II).

Source: [https://www.architectsjournal.co.uk/pictures/980x653fitpad\[31\]/7/1/7/1345717_FGP_HermanMillerFactory_Exterior_02.jpg](https://www.architectsjournal.co.uk/pictures/980x653fitpad[31]/7/1/7/1345717_FGP_HermanMillerFactory_Exterior_02.jpg)

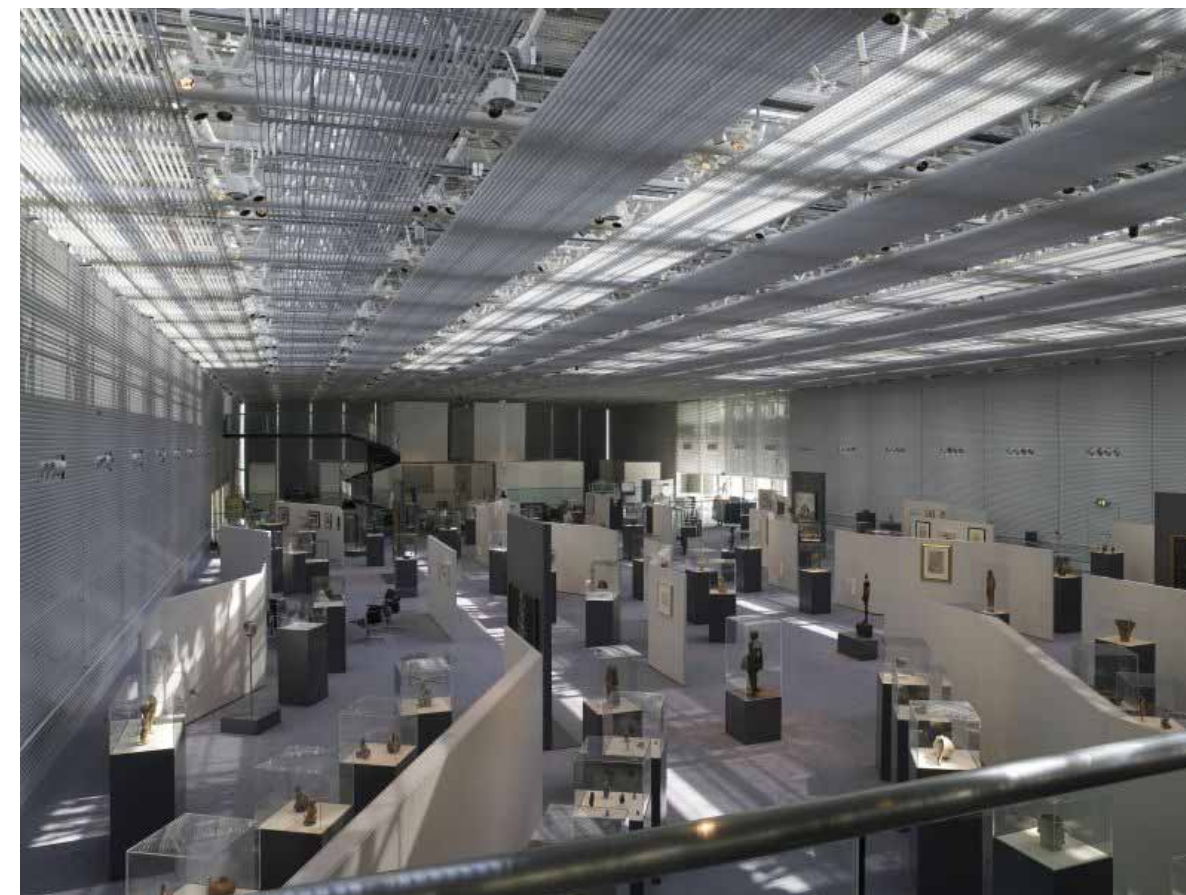


Figure 67. 1978: Sainsbury's Centre (top left and right) for Visual Arts by Norman Foster (listed Grade II*)
Source: Foster and Partners, <http://www.fosterandpartners.com/media/Projects/0188/img0.jpg>



Figure 68. 1980: Brewery in St Edmunds by Michael Hopkins (bottom left and right), not listed.
Source: Hopkins Architects, http://www.hopkins.co.uk/usr/library/images/main/81/gk_kk_n3_standard.jpg



Figure 69. 1980: IBM Sport Hall, Winchester by N. Grimshaw, not listed
Source: <http://www.auraltda.cl/media/cache/56/88/5688e059e697cc303fce7df317e24012.jpg>



Figure 70. 1982: Inmos Microprocessor Factory in Newport by Richard Rogers, not listed.
Source: Roger Stirk Harbour, https://www.rsh-p.com/assets/uploads/200_0092_1_1.jpg



Figure 71. 1982: Herman Miller Distribution Centre, Chippenham by N. Grimshaw (not listed)
<http://www.designcurial.com/Uploads/Project/9573/images/276472/large/PortalMill2.jpg>



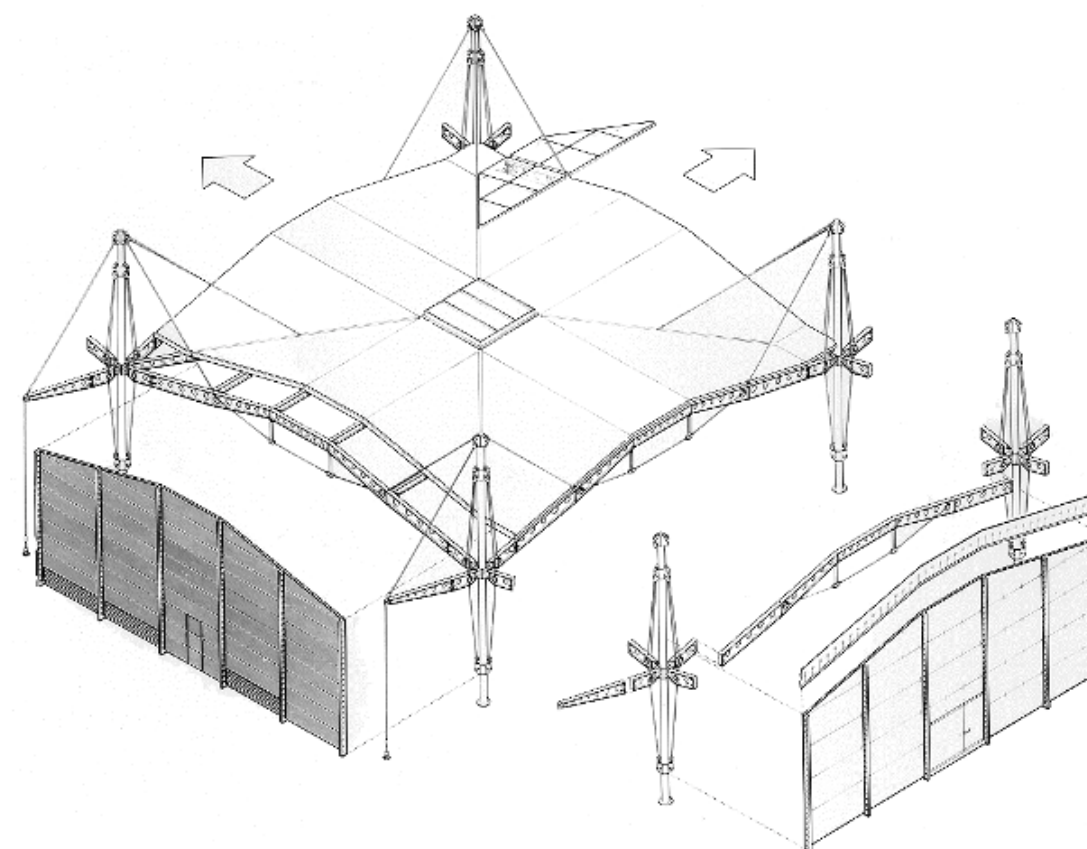
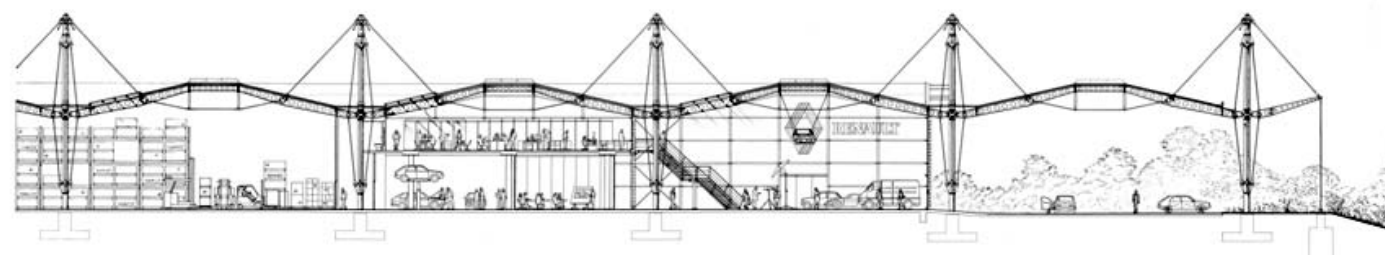


Figure 72. 1982: Renault Distribution Centre, Swindon by Norman Foster (listed Grade II*).

Source: AJ, [https://www.architectsjournal.co.uk/pictures/980x653fitpad\[31\]/6/7/4/1412674_154-2158-160-49a694c3a6ffcd0f5ef5dab8ba8e8c75.jpg](https://www.architectsjournal.co.uk/pictures/980x653fitpad[31]/6/7/4/1412674_154-2158-160-49a694c3a6ffcd0f5ef5dab8ba8e8c75.jpg)