

Figure 43. 1985: Existing site plan prior to the redevelopment of the site



Source: Camden Local Studies

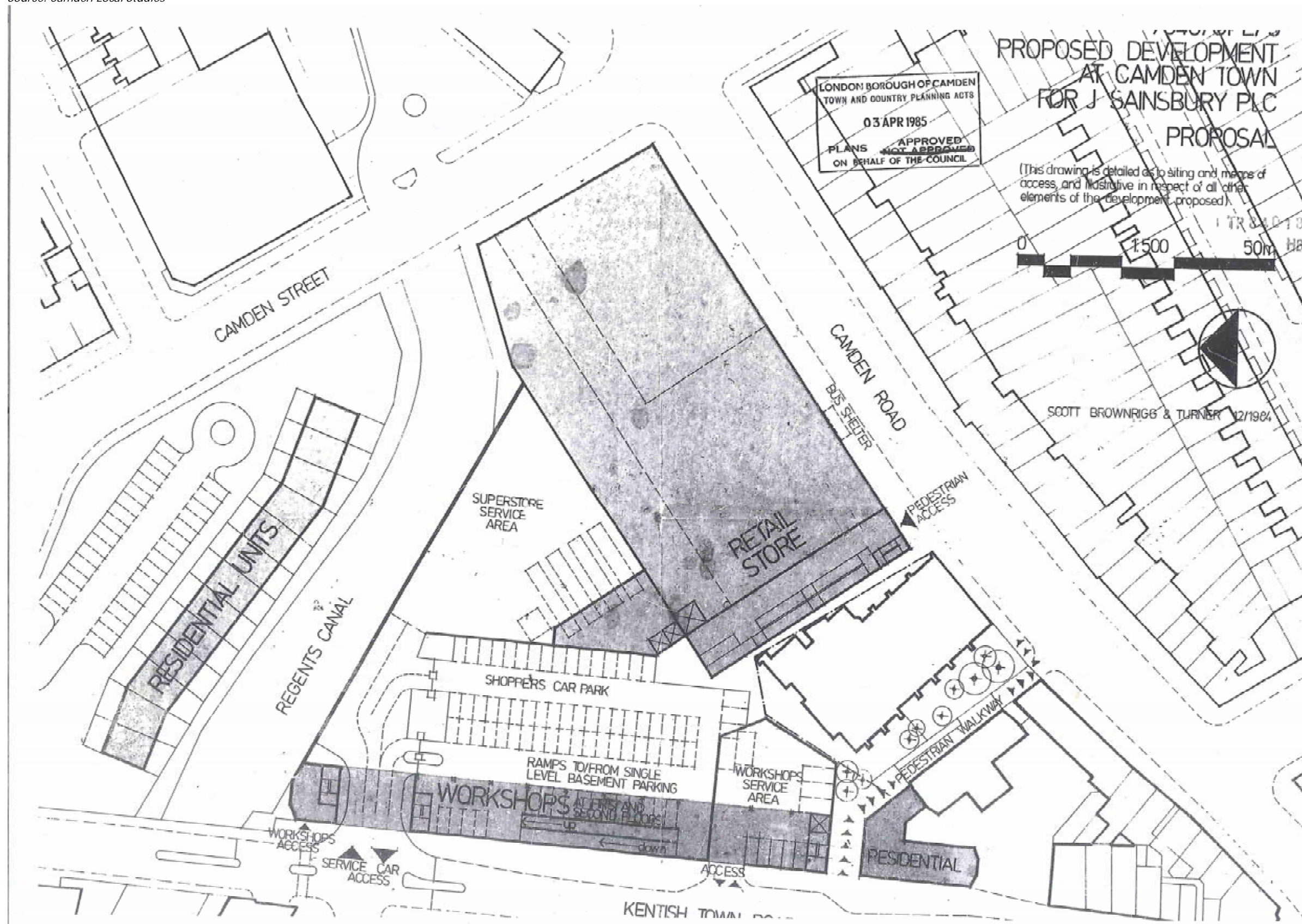
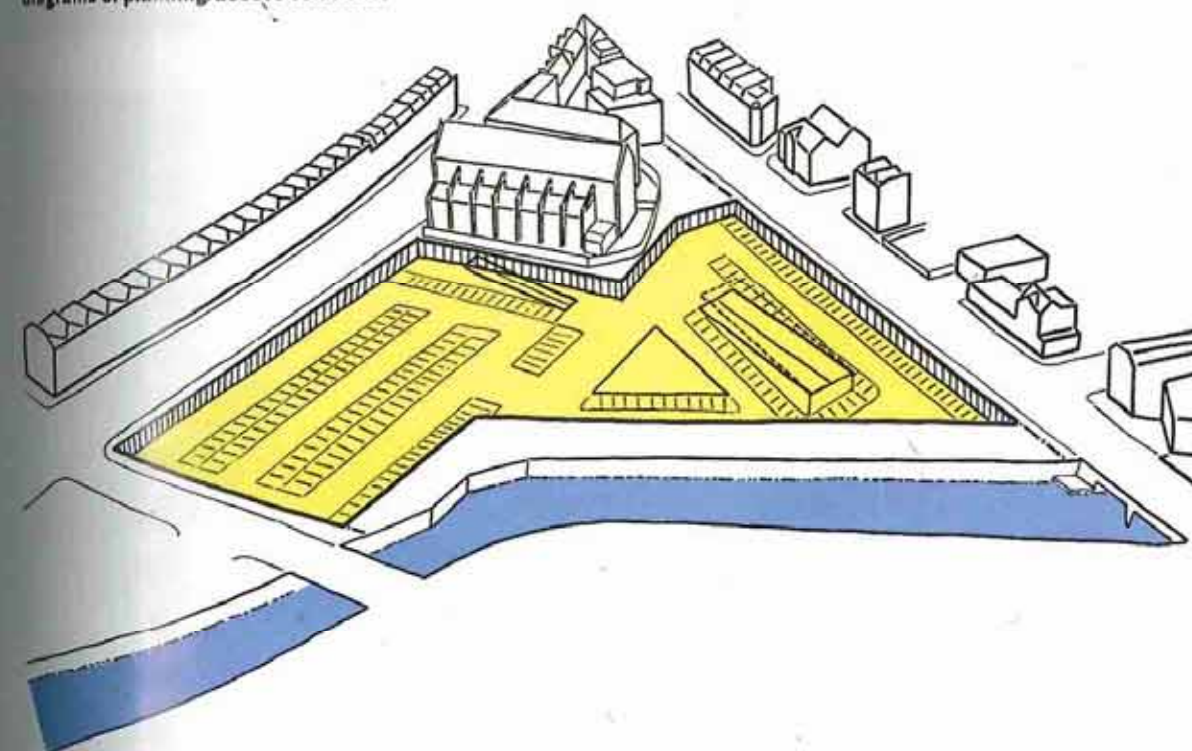


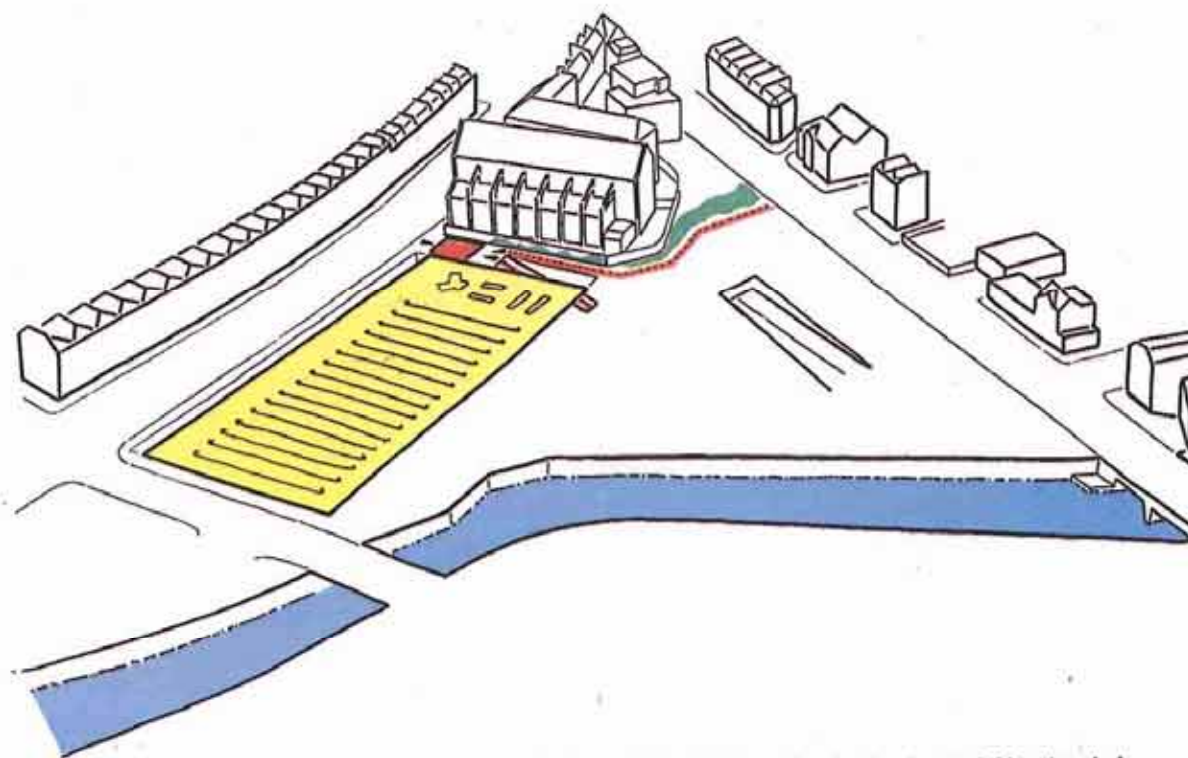
Figure 44. 1984: Initial layout of the proposed Sainsbury's development on the former ABC site  
Source: Camden Local Studies



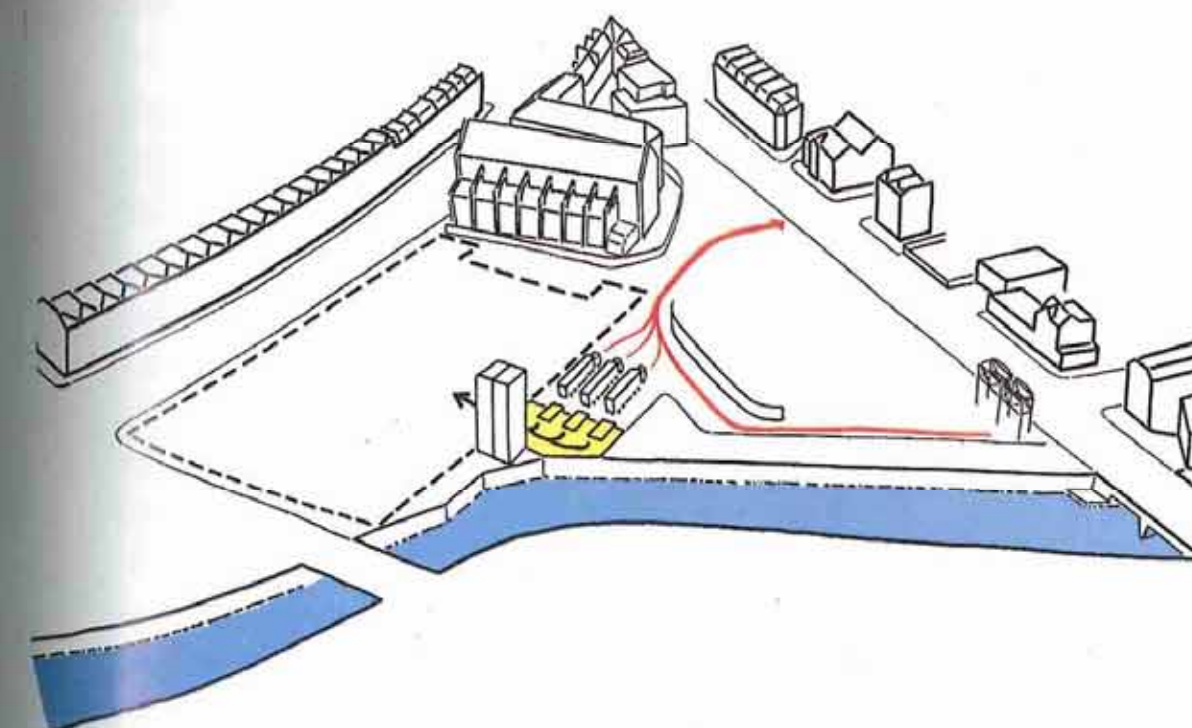
diagrams of planning/access solutions:



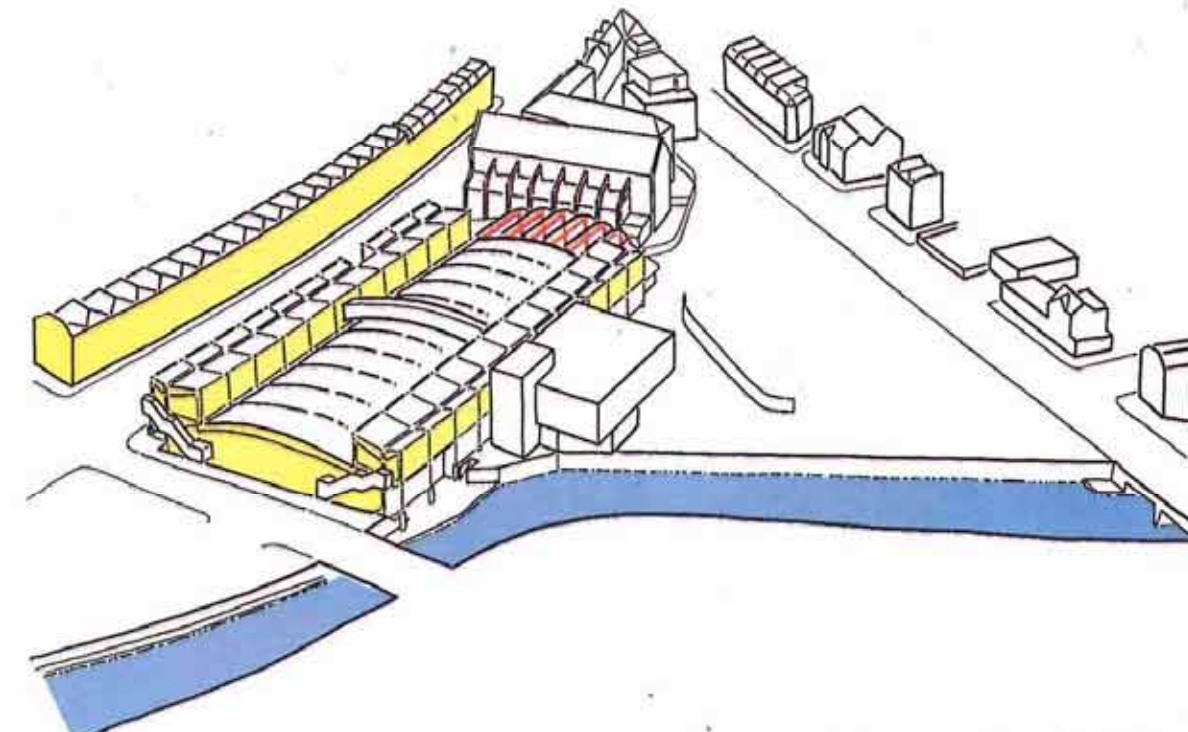
whole site excavated for parking with vehicle and pedestrian/trolley ramp



pedestrian/trolley ramp meets access routes from Camden and Kentish Town Roads at entrance lobby at end of supermarket floor



truck entrance, unloading and exit



massing and structural rhythm with store rooms elevated over loading areas and bridge connecting service areas over shopping shed; frames to entry canopy echo buttresses of church and structure of plant/staff rooms echoes roof and facades of houses across Camden Road

Figure 45. 1989: Diagrams of planning and access solutions  
Source: *Architectural Review*, October 1989, p. 45



ingenious moving ramp) and bold display of advanced construction (the tensile rod 'order' that articulates a scale comparable to neighbours) that urbanity is achieved here.

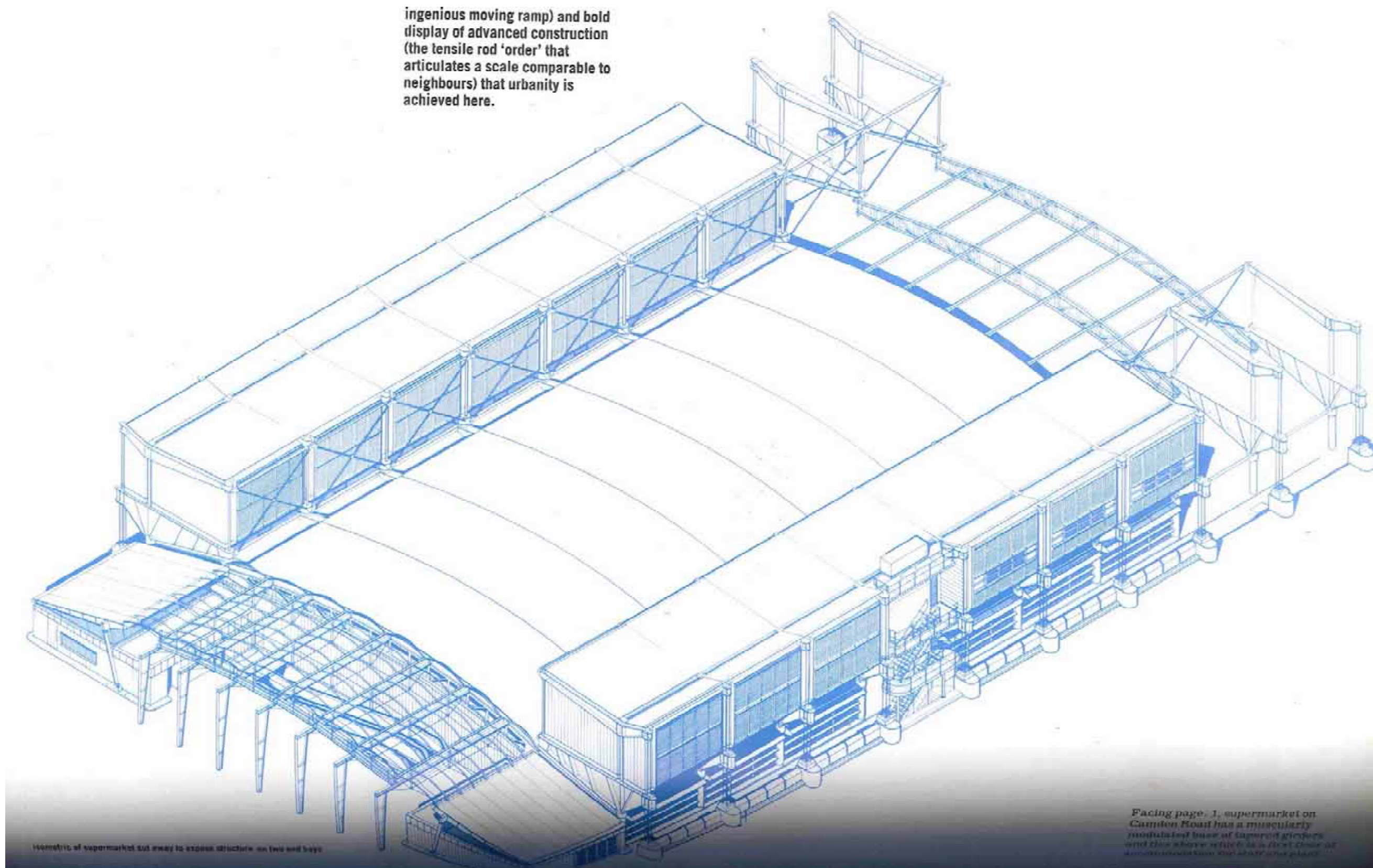


Figure 46. 1989: Isometric of supermarket cut away to expose structure on two end bays. Source: Architectural Review, October 1989, p. 45

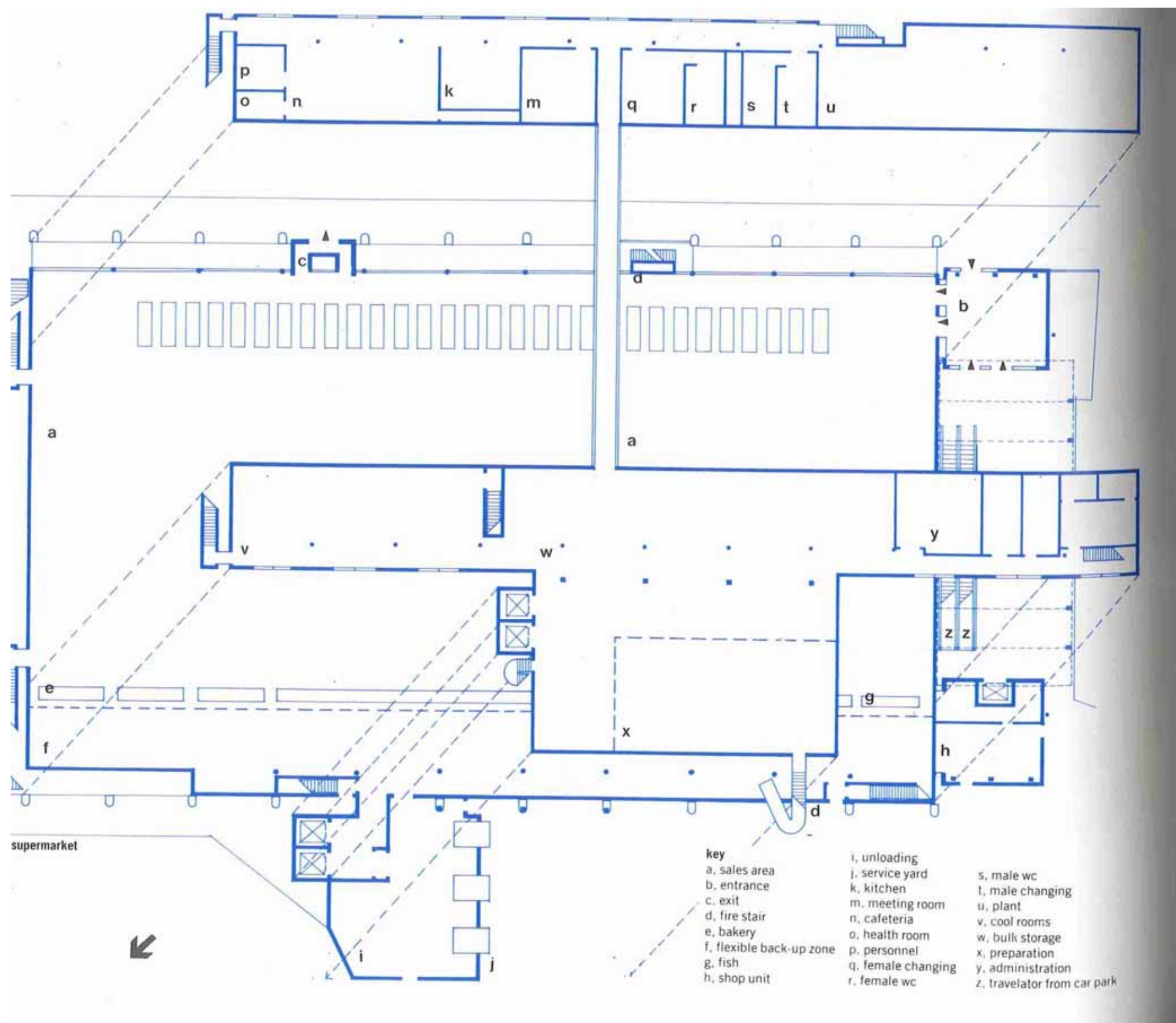


Figure 47. 1989: Exploded plans of supermarket  
 Source: Architectural Review, October 1989, p. 45



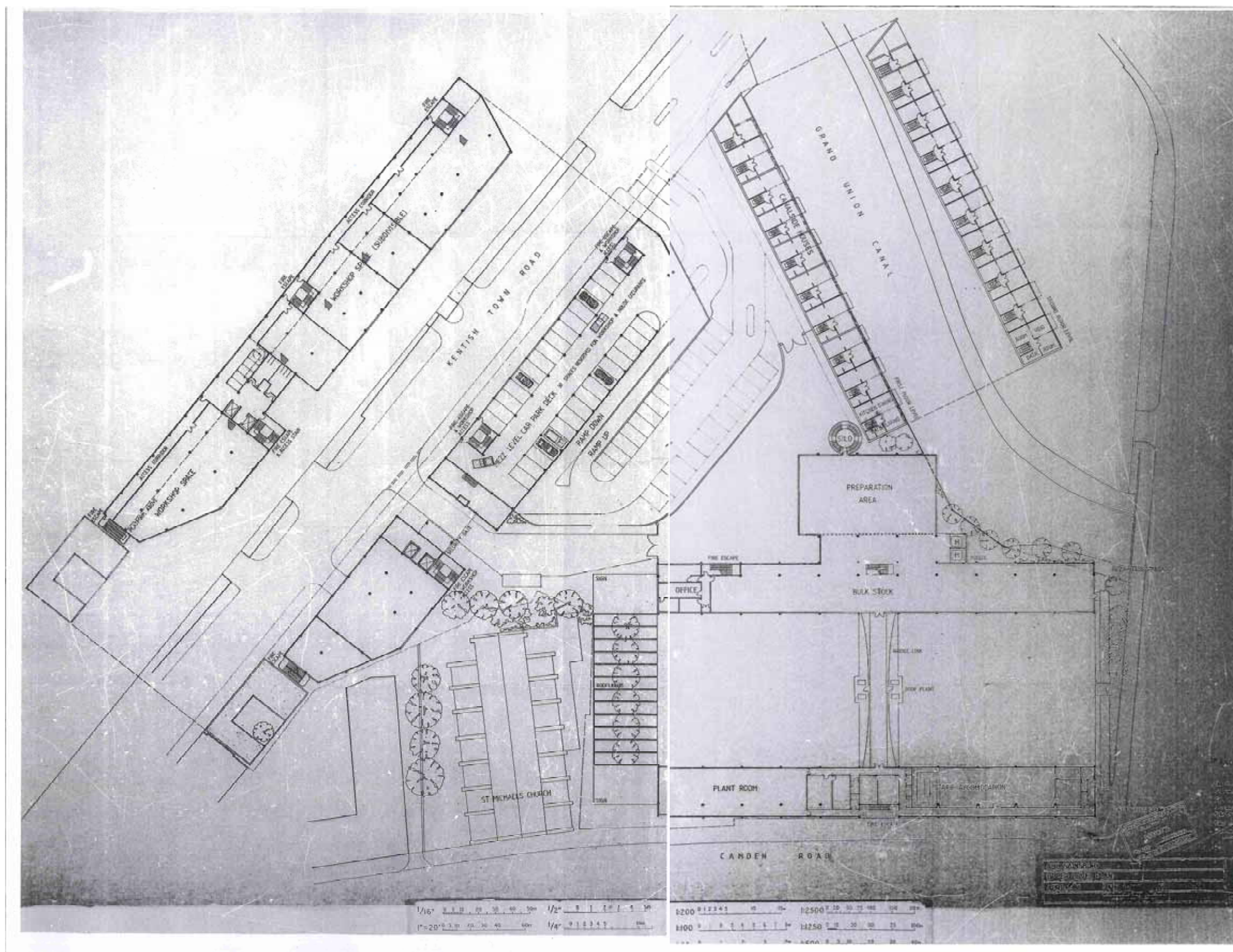


Figure 48. 1986: Upper ground floor plan of the proposed Sainsbury's development on the former ABC site  
Source: LB Camden Local Studies



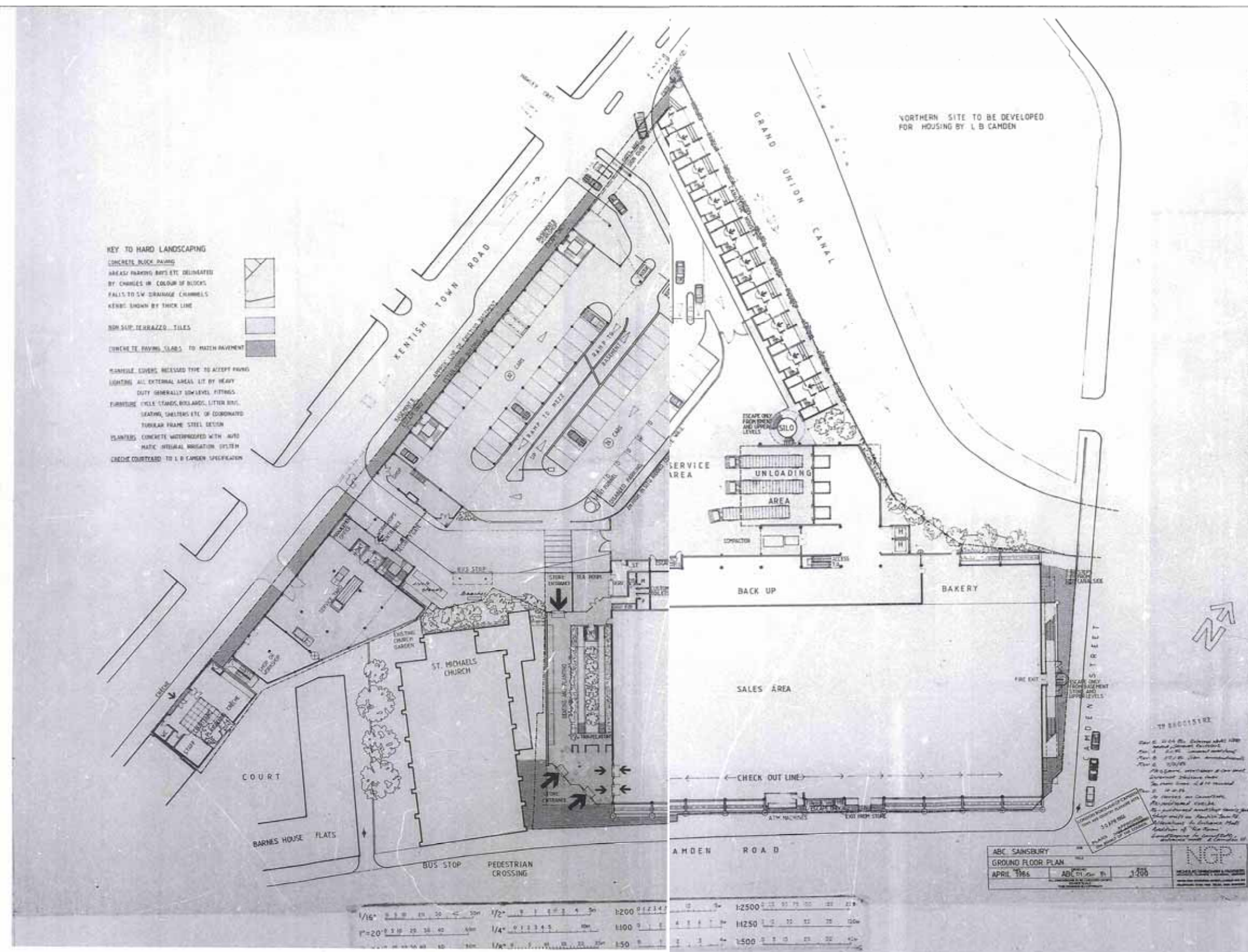


Figure 49. 1986: Lower ground floor plan of the proposed Sainsbury's development on the former ABC site  
 Source: LB Camden Local Studies



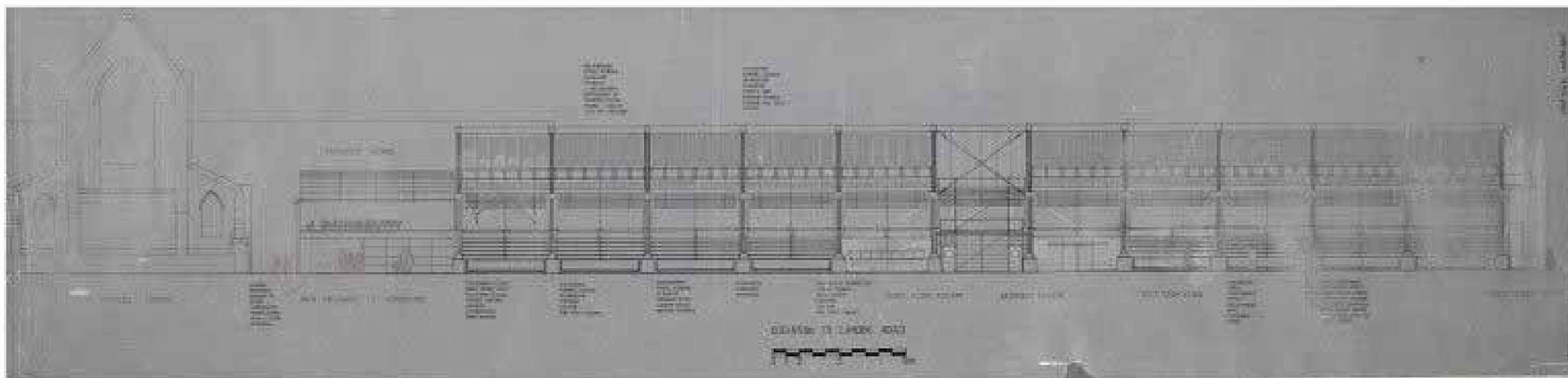


Figure 50. 1986: Sainsbury's Camden Road side elevation.  
Source: V&A Collections

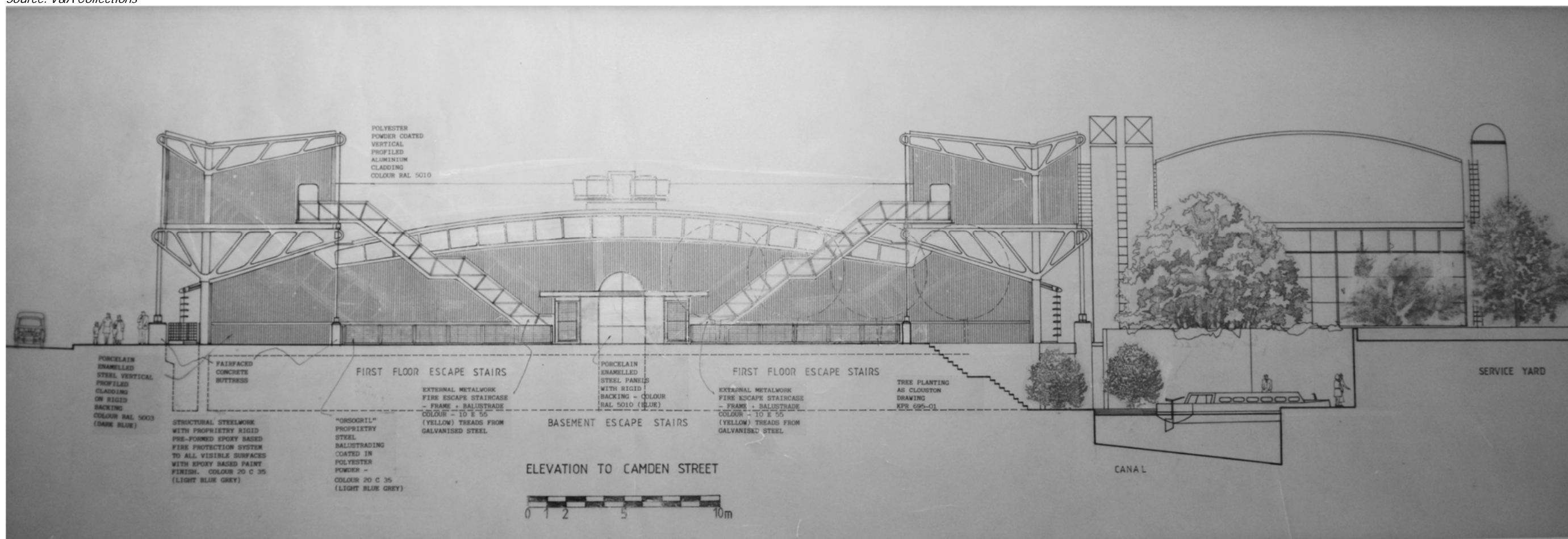


Figure 51. 1988: Sainsbury's: Elevation to Camden Street  
Source: V&A Collections



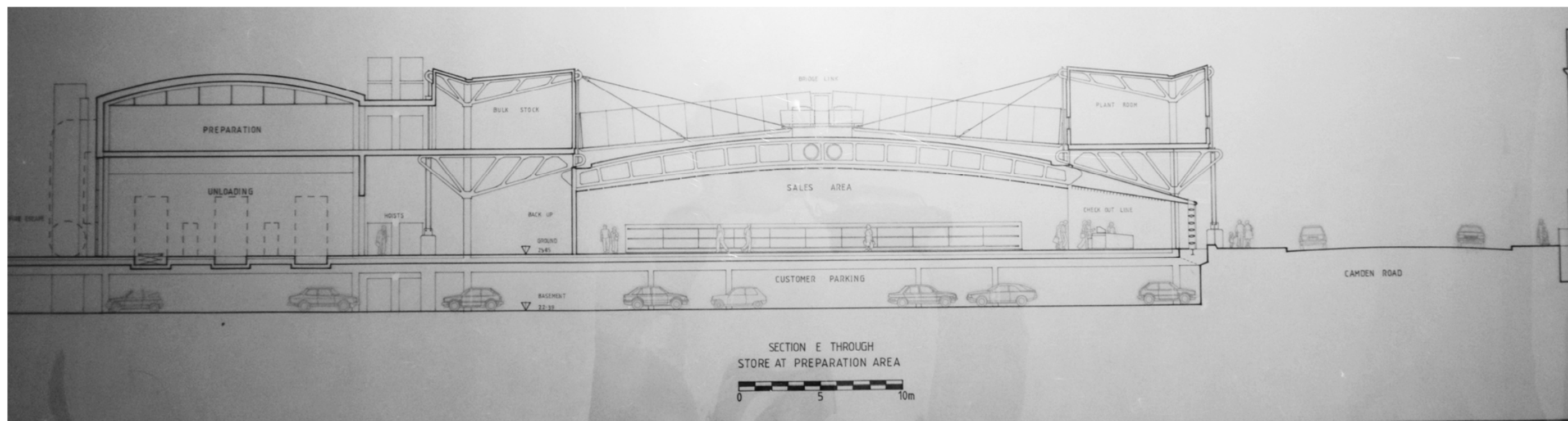


Figure 52. 1988: Sainsbury's Section E through store at preparation area  
Source: V&A Collections

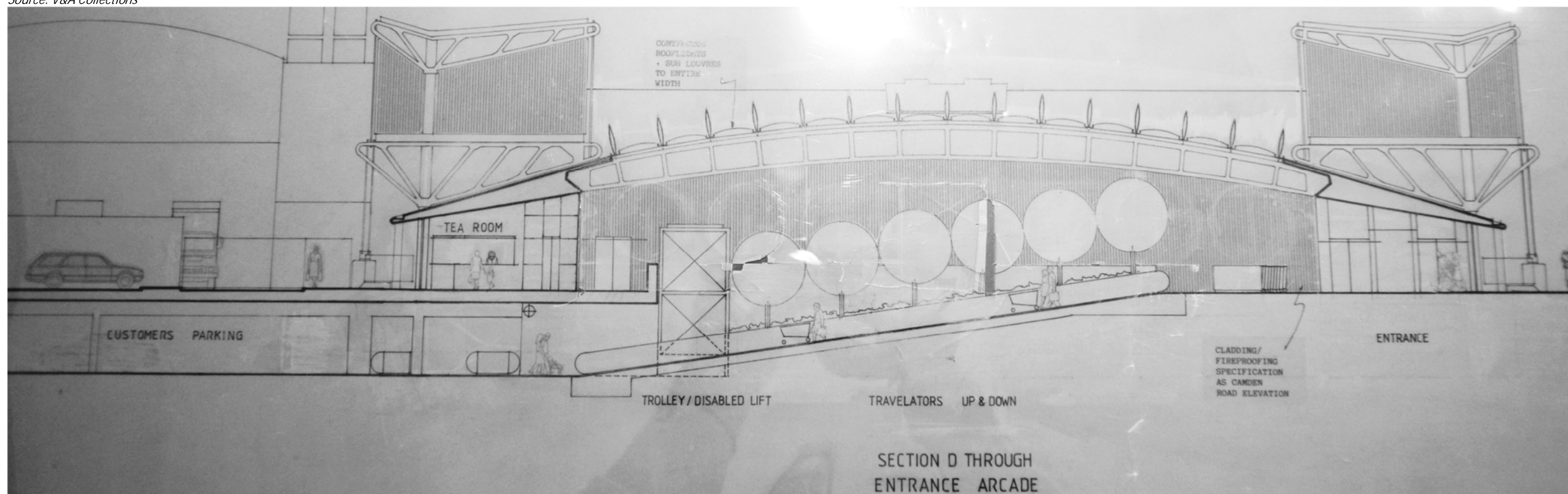


Figure 53. 1988: Sainsbury's: Section D through entrance arcade