



Figure 38. 1990s: View of the canal-side flats
Source: Wikipedia

III. HISTORIC PLANS AND DRAWINGS

IIIA AERATED BREAD COMPANY (ABC)

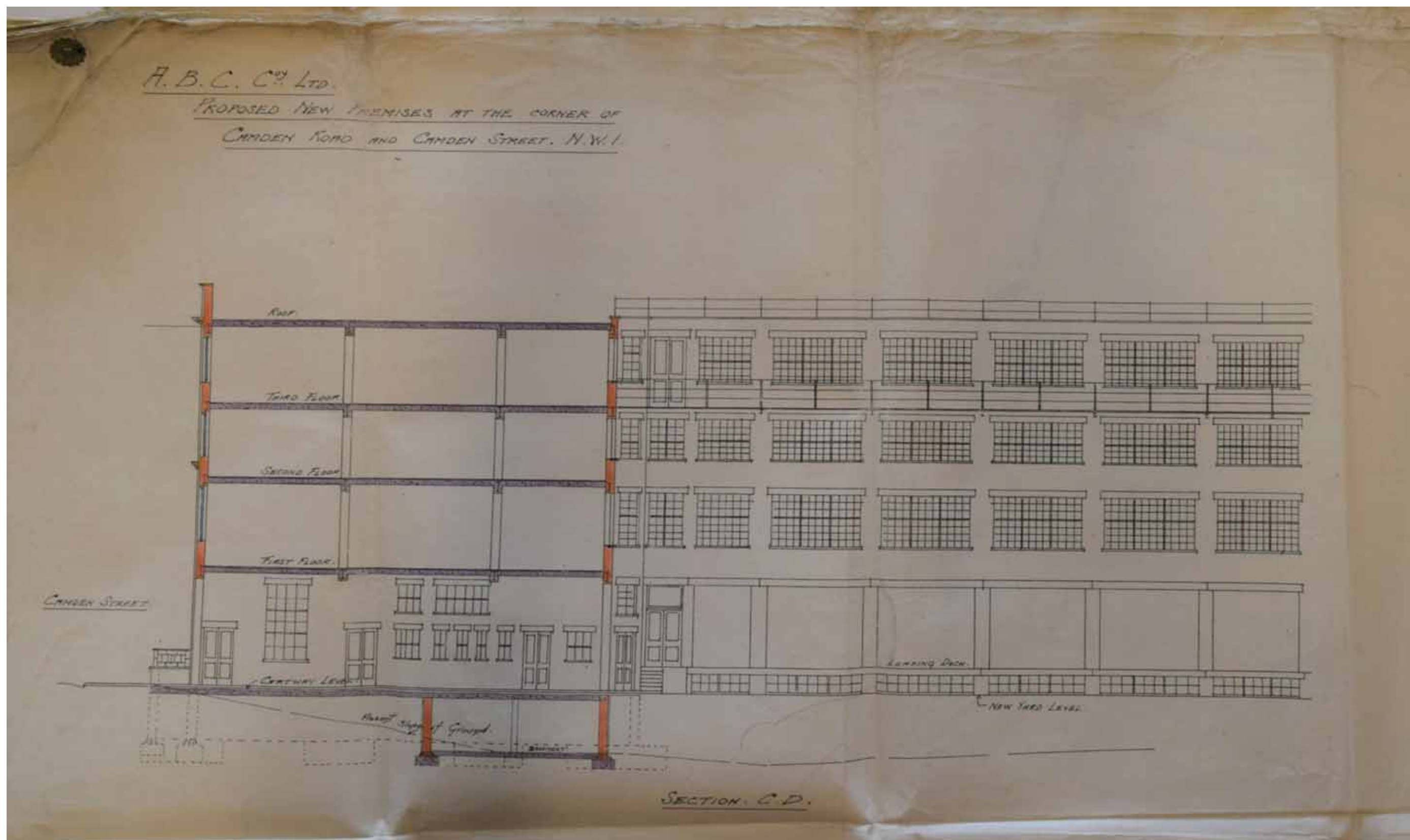


Figure 39. 1923: Proposed new ABC premises at the corner of Camden Street and Camden Road
Source: LMA, ref. GLC/AR/BR/06/052101

[illegible]

J947 GRAND UNION HOUSE, 20 KENTISH TOWN ROAD, LONDON NW1 9NX
HERITAGE ASSESSMENT: APPENDIX A
j947 2018.12.05 GUH HA_App A (Maps) v1b_FINAL.docx

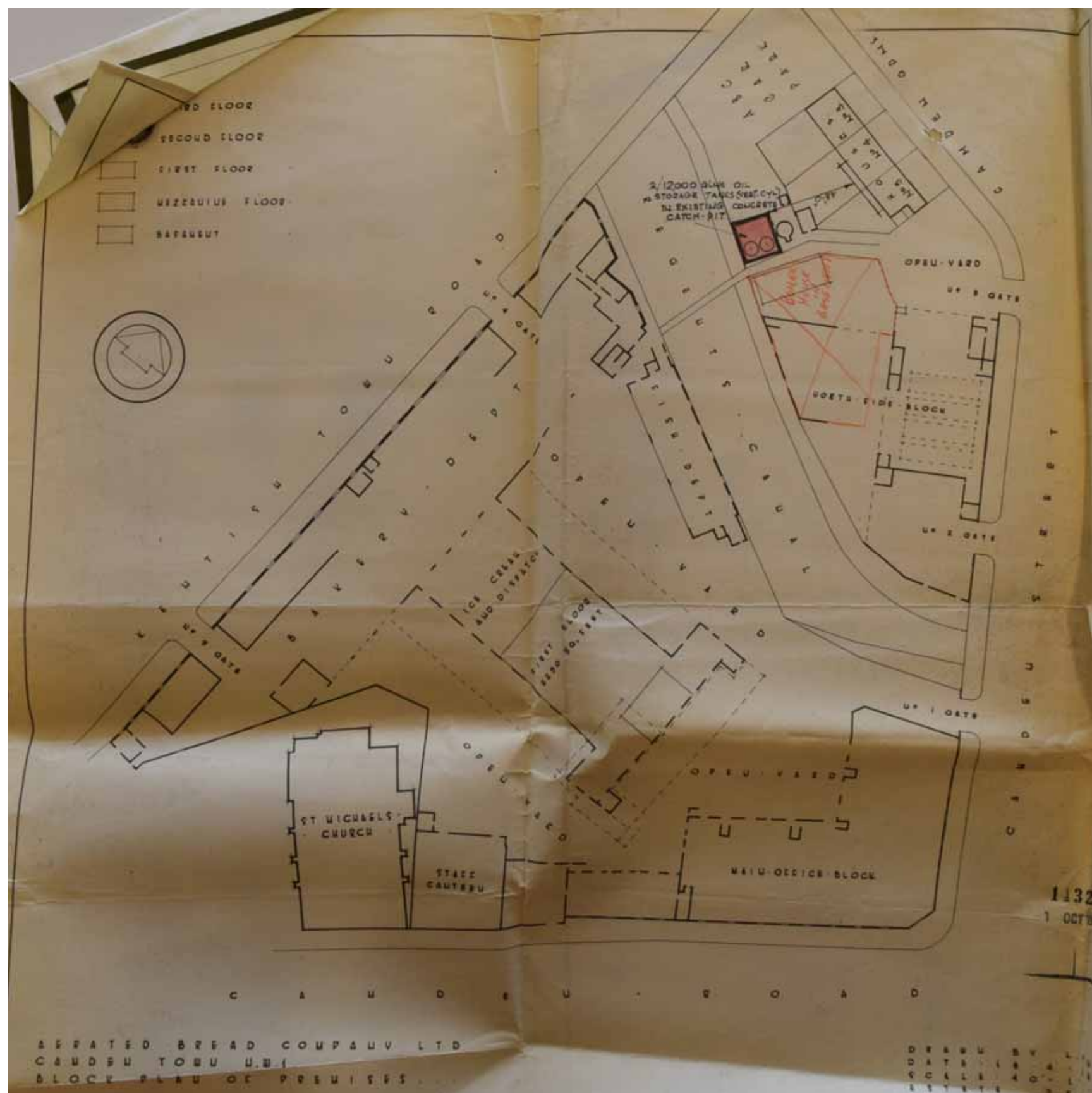


Figure 41. 1959: Site plan showing the ABC complex occupying the site between Kentish Town Road and Camden Road.
Source: LMA, ref. GLC/AR/BR/06/052101

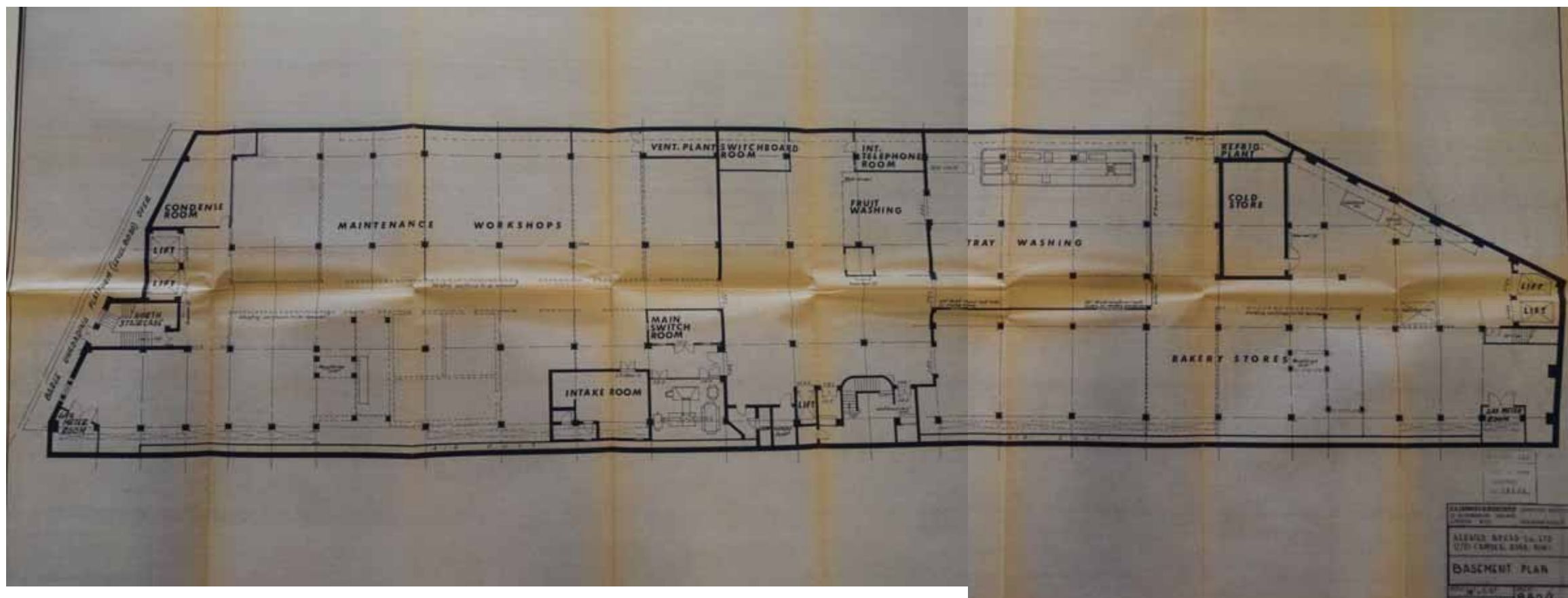


Figure 42. 1969: ABC basement plan (Kentish Town Road side)
Source: LMA, ref. GLC/AR/BR/13/107267

IIIC REDEVELOPMENT OF THE FORMER ABC SITE (N. GRIMSHAW)