

Data source - BGS Mapping - Scale 1:10,000



Scale at A3: 1:30,000

Coordinate System:  
British National Grid  
GCS\_OSGB\_1936

**Legend**

- London Borough of Camden
- Railway Lines
- A Roads

- BGS 1:10K Artificial Ground**
- MADE GROUND
  - WORKED GROUND

- BGS 1:10K Drift Geology**
- ALLUVIUM
  - HACKNEY GRAVEL FORMATION
  - LANGLEY SILT FORMATION
  - LYNCH HILL GRAVEL FORMATION
  - STANMORE GRAVEL FORMATION

- BGS 1:10K Solid Geology**
- BAGSHOT FORMATION
  - CLAYGATE MEMBER
  - LAMBETH GROUP
  - LONDON CLAY FORMATION

NB: Geological boundaries are largely indicative based on available geological mapping data

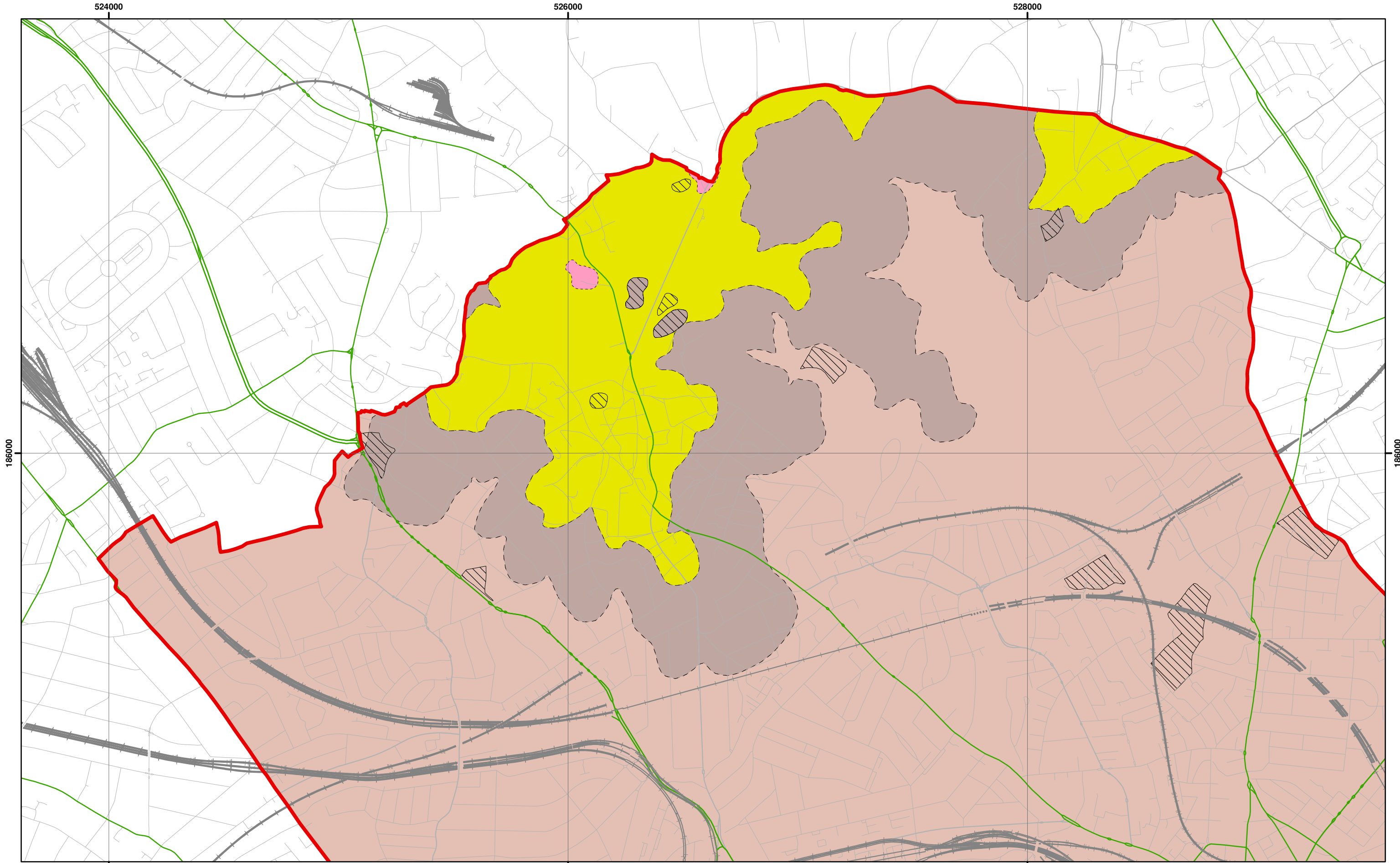
**Camden Geological, Hydrogeological  
and Hydrological Study**  
Camden Geological Map

213923

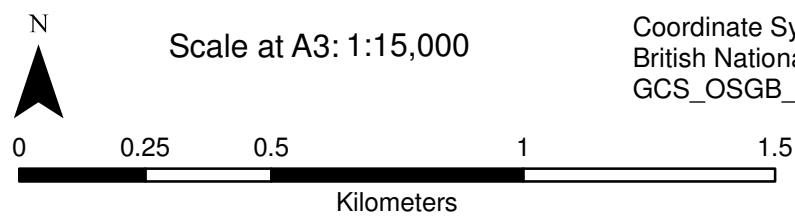
FIGURE **3**







Data Source: BGS Mapping - Scale 1:10,000



Coordinate System:  
British National Grid  
GCS\_OSGB\_1936

**Legend**

- |                          |                             |                             |                         |
|--------------------------|-----------------------------|-----------------------------|-------------------------|
| London Borough of Camden | BGS 1:10K Artificial Ground | BGS 1:10K Drift Geology     | BGS 1:10K Solid Geology |
| Railway Lines            | MADE GROUND                 | ALLUVIUM                    | BAGSHOT FORMATION       |
| A Roads                  | WORKED GROUND               | HACKNEY GRAVEL FORMATION    | CLAYGATE MEMBER         |
|                          |                             | LANGLEY SILT FORMATION      | LAMBETH GROUP           |
|                          |                             | LYNCH HILL GRAVEL FORMATION | LONDON CLAY FORMATION   |
|                          |                             | STANMORE GRAVEL FORMATION   |                         |

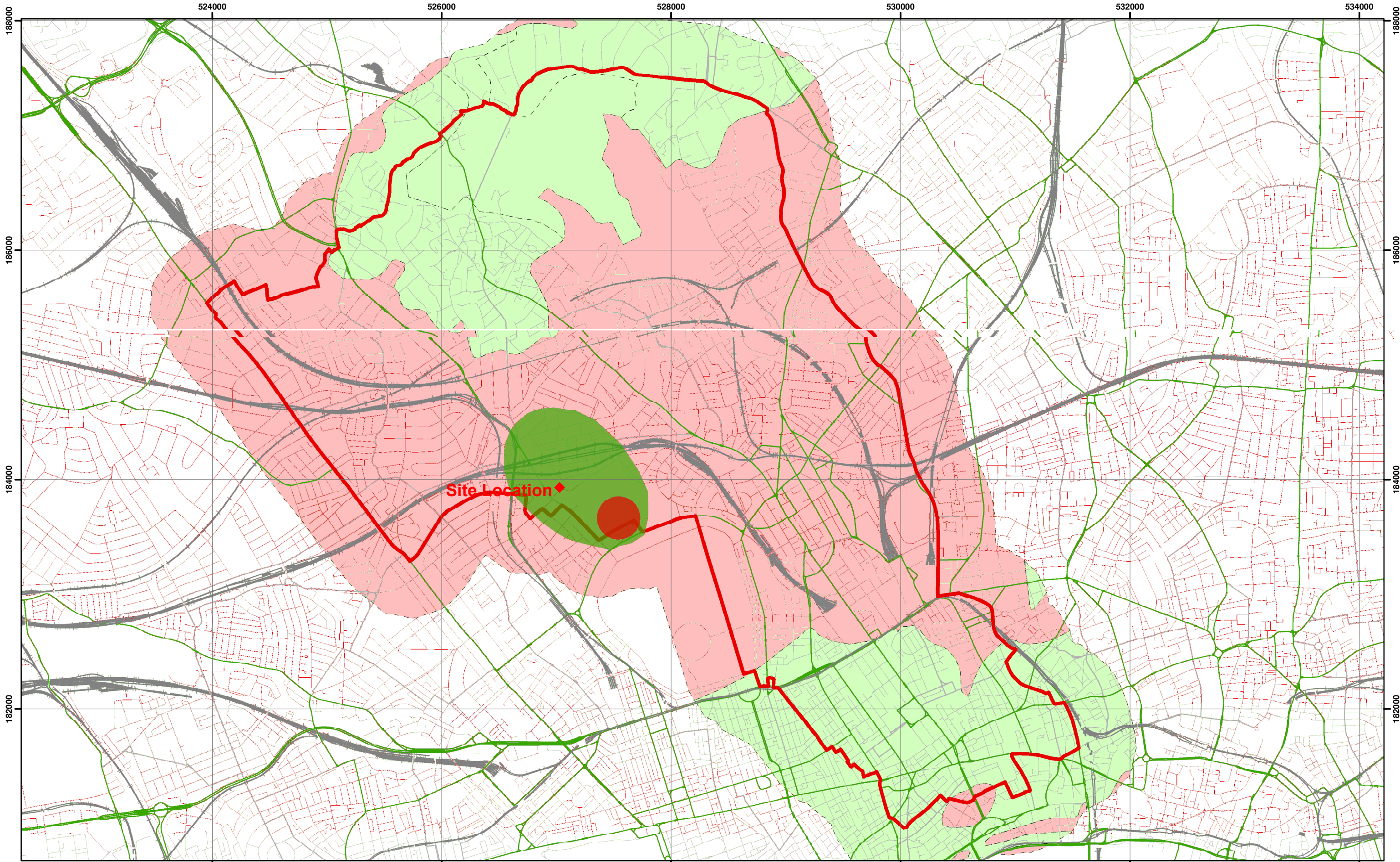
**Camden Geological, Hydrogeological  
and Hydrological Study**  
North Camden Geological Map

213923

FIGURE **4**

NB. Geological boundaries are largely indicative based on available geological mapping data





Environment Agency Aquifer Designation based on BGS Mapping



Scale at A3: 1:30,000

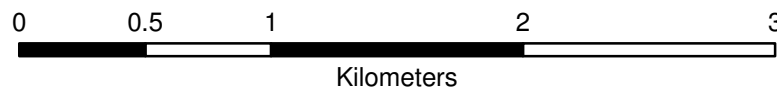
Coordinate System:  
British National Grid  
GCS\_OSGB\_1936

**Legend**

- |                   |                            |                               |
|-------------------|----------------------------|-------------------------------|
| Borough of Camden | <b>Aquifer Designation</b> | <b>Source Protection Zone</b> |
| Railway Lines     | Secondary A Aquifer        | Outer Source Protection Zone  |
| A Roads           | Unproductive Strata        | Inner Source Protection Zone  |

NB. Aquifer boundaries are indicative based on available geological mapping data

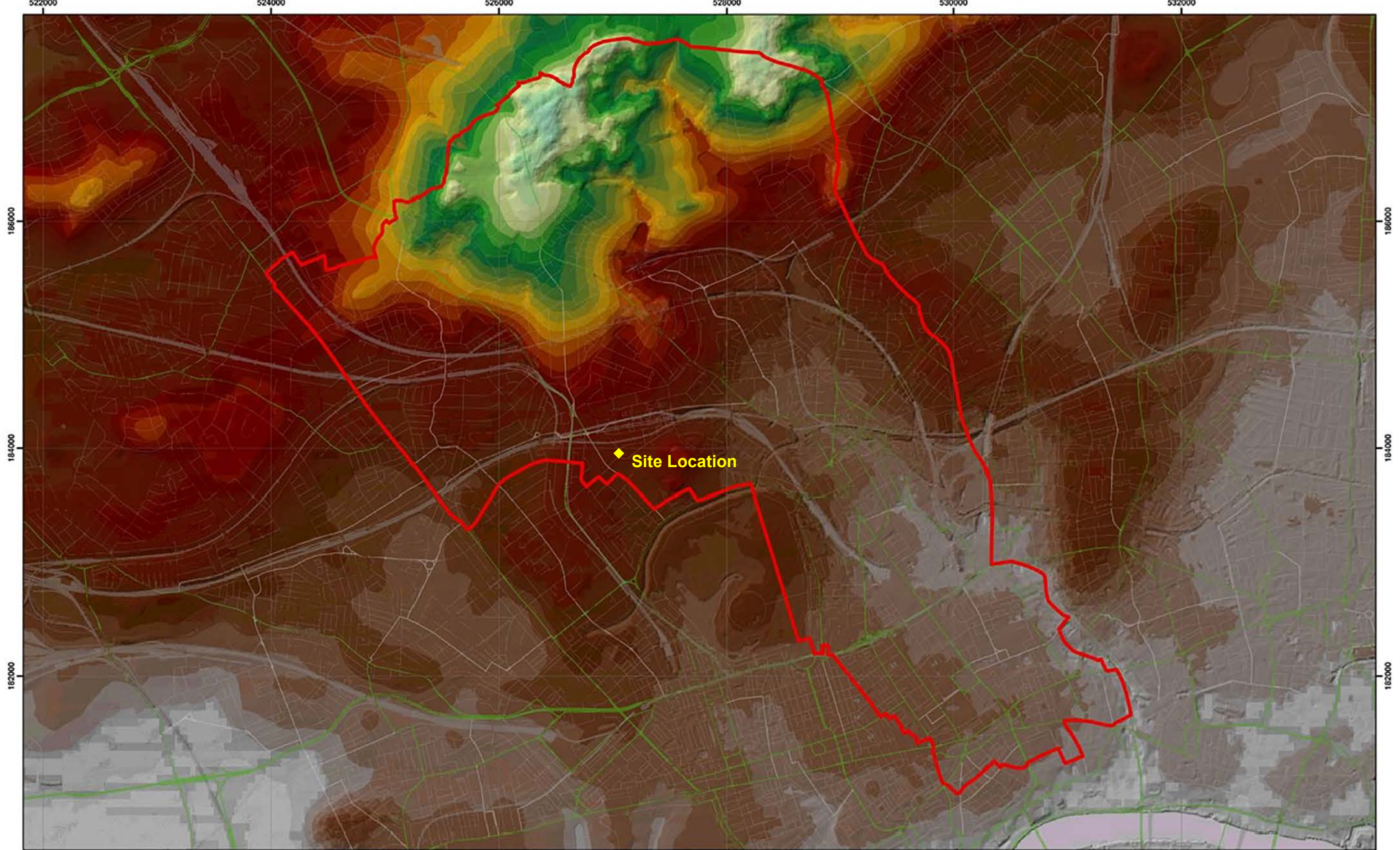
**Camden Geological, Hydrogeological  
and Hydrological Study**  
Camden Aquifer Designation Map



213923

FIGURE **8**





Topographic map based on digital terrain model provided by Camden Borough Council

Scale at A3: 1:30,000

Coordinate System:  
British National Grid  
GCS\_OSGB\_1936

0 0.375 0.75 1.5 2.25 3 3.75  
Kilometers

**Legend**

- London Borough of Camden
- Railway Lines
- A Roads

**DTM Terrain**  
- Window Size: 20,000

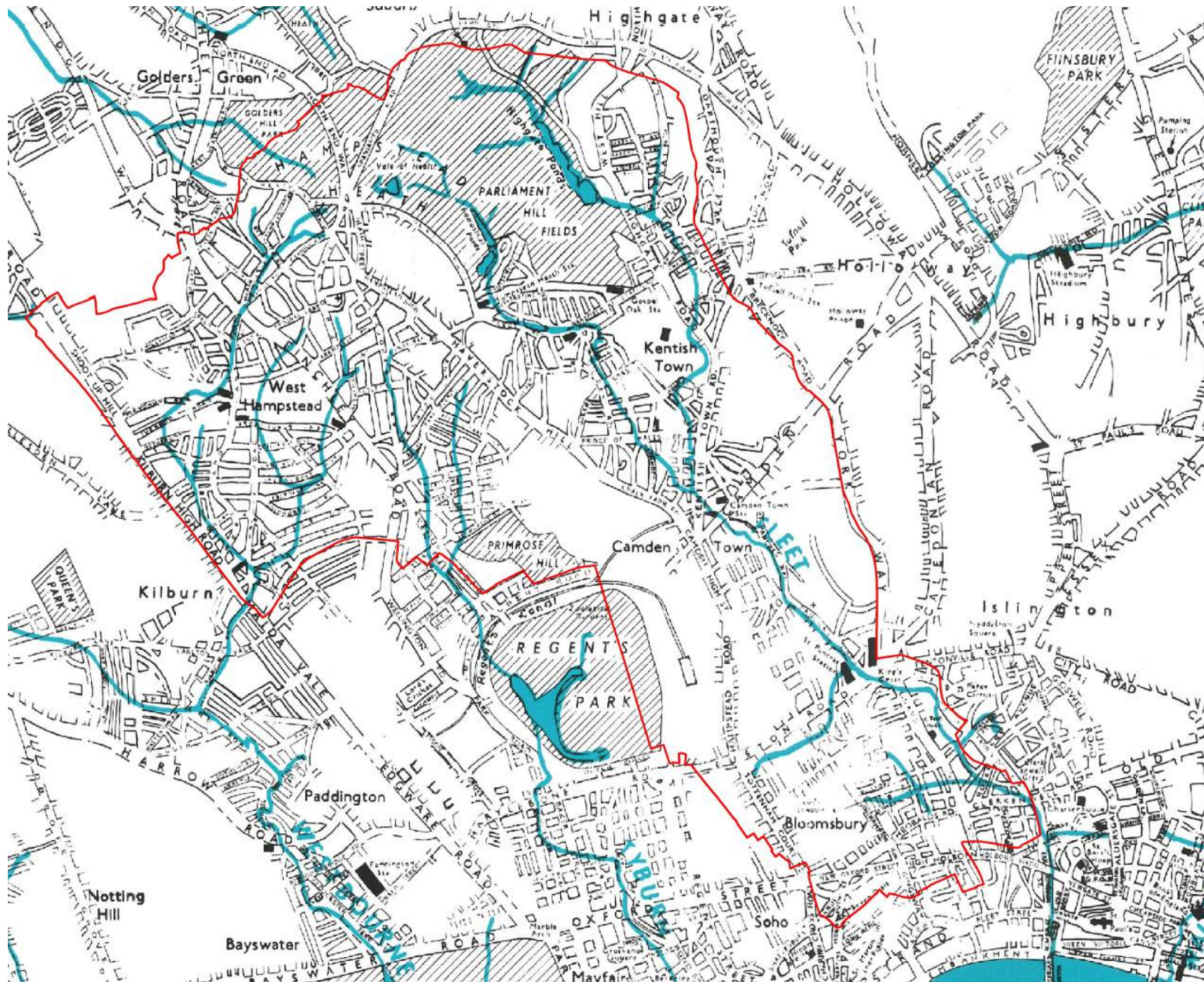
125 - 130	90 - 95	55 - 60	20 - 25
120 - 125	85 - 90	50 - 55	15 - 20
115 - 120	80 - 85	45 - 50	10 - 15
110 - 115	75 - 80	40 - 45	5 - 10
105 - 110	70 - 75	35 - 40	0 - 5
100 - 105	65 - 70	30 - 35	-5 - 0
95 - 100	60 - 65	25 - 30	-7.4 - -5

**Camden Geological, Hydrogeological and Hydrological Study**  
Camden Topographic Map

213923

FIGURE 10





**Camden Geological, Hydrogeological and Hydrological Study**  
**Watercourses**

Source – Barton, Lost Rivers of London