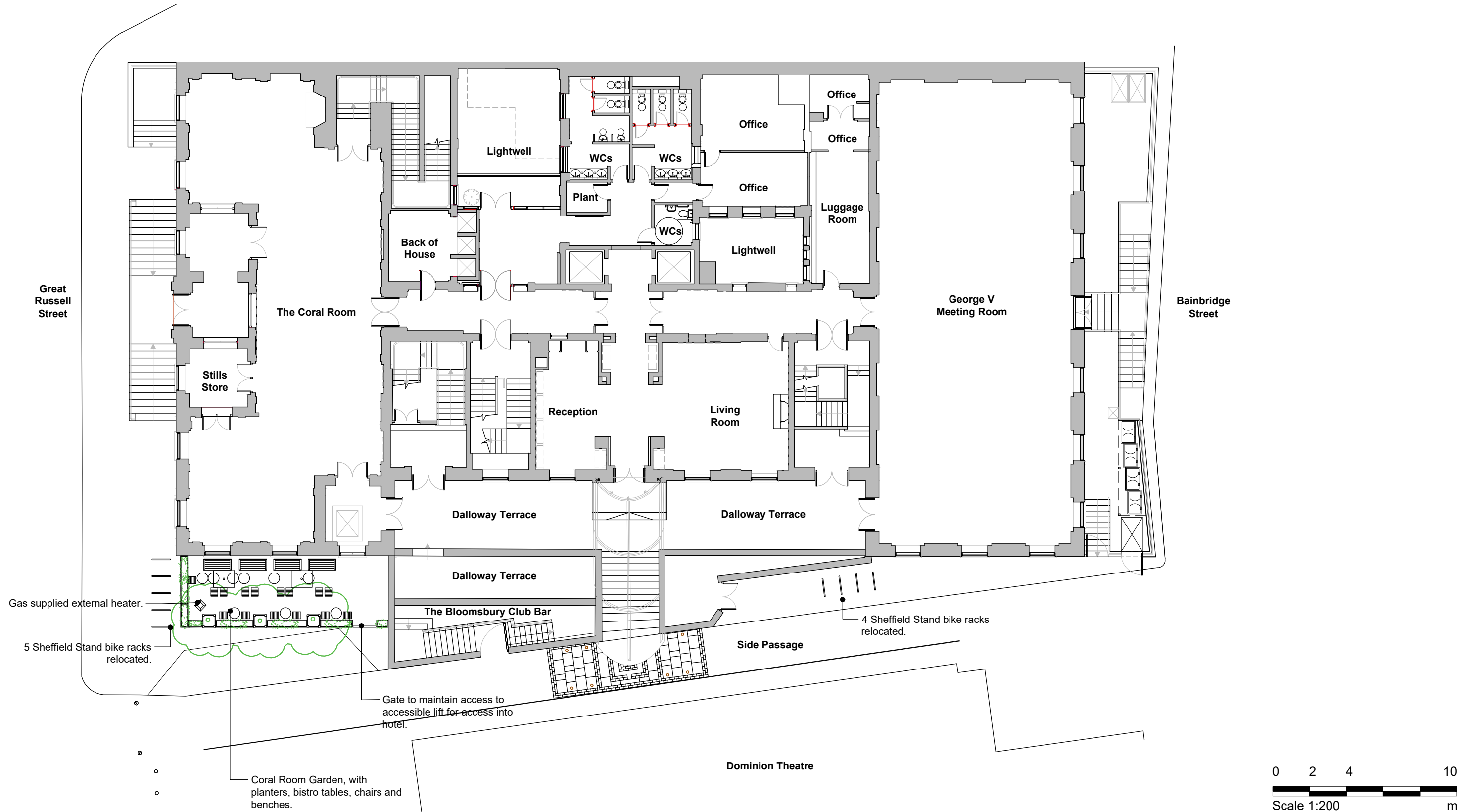
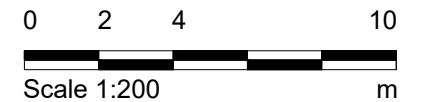


All drawings based on survey by others



01 GROUND FLOOR PLAN - AS PROPOSED
2012 1:200 @ A3



Purpose of Issue:
FOR_PLANNING

Notes:
 1 Any dwg format drawing is to be read only in conjunction with and at the scale of the accompanying pdf.
 2 Status: 'C' drawing (Construction). All dimensions are to be checked on site by the contractor, scaling is for Planning purposes only. Unless otherwise indicated, all dimensions are in millimeters. All information on this drawing is to be read in conjunction with the relevant Donald Insall Associates specification and trade contractors' drawings and information by specialists.
 3 In the event of any query, please contact us immediately.
 4 This drawing contains survey information by others and is to be used solely for the purposes for which it was issued.

Rev	Date	Dwn	Auth	Revision
B	19.12.18	AEF	AEF	BIKE RACKS REINSTATED
A	21.11.18	AEF	AEF	PERSPEX AND PORTERS LODGE REMOVED FOLLOWING LOCAL AUTHORITY COMMENTS
0	08.08.18	AEF	AEF	INITIAL ISSUE

Drawing Status
 F Feasibility
 S Sketch Design
 D Design
 P Planning
 B Building Control
 W Working Drawing
 M Measurement
 T Tender
 C Construction
 R Record

BLOOMSBURY HOTEL
 WC1B 3NN

 GROUND FLOOR PLAN
 AS PROPOSED

Donald Insall Associates
 Chartered Architects and Historic Building Consultants
 12 Devonshire Street, London W1G 7AB
 T: (+44)20 7245 9888 www.insall-architects.co.uk

Project	BLOOM.02	No	2012
Scale	1:200	Status	P
		Rev	B