

Site Area and Density Comparison

23 Ravenshaw Street London NW6 1NP
2017/0911/P

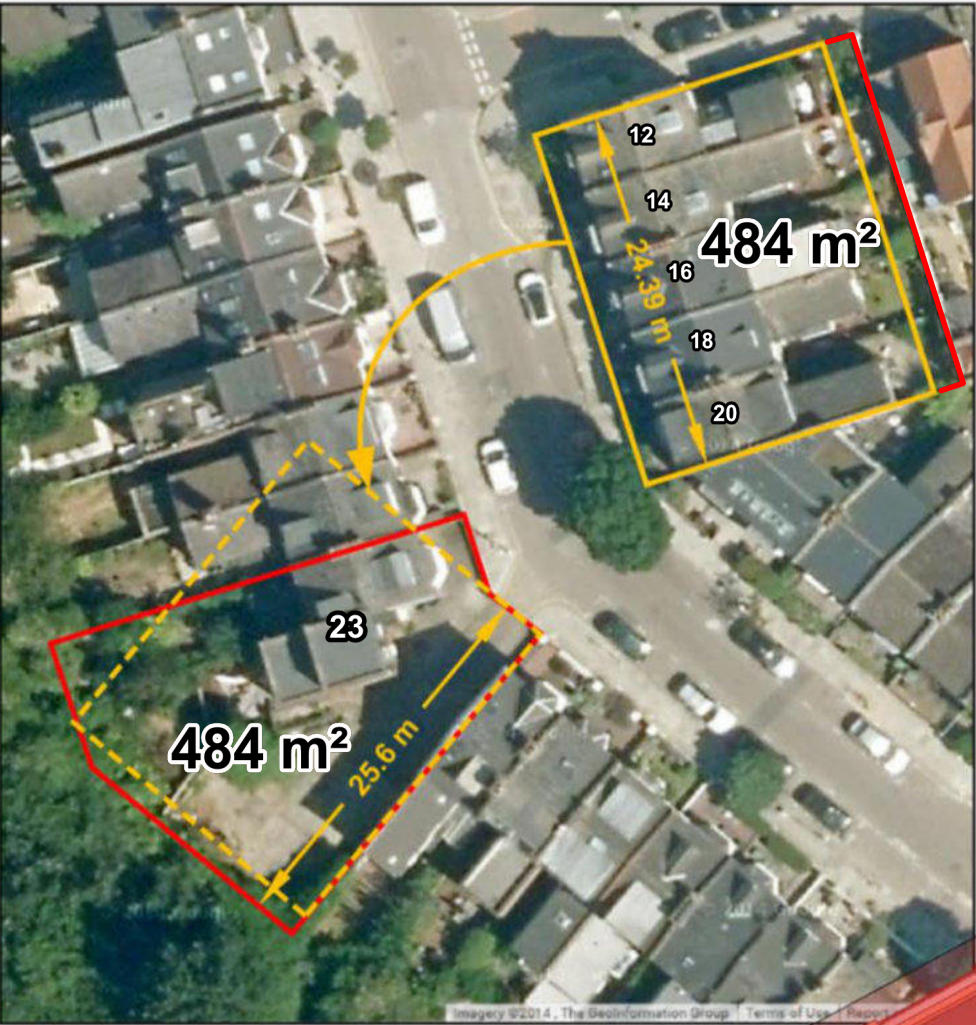
Proposed density is perfectly comparable to surrounding densities



12-20 Ravenshaw Street

The five houses (7 units) opposite comprising 12 -20 Ravenshaw Street sit on an overall plot area of just 531m².

Site area transposed and shown in yellow

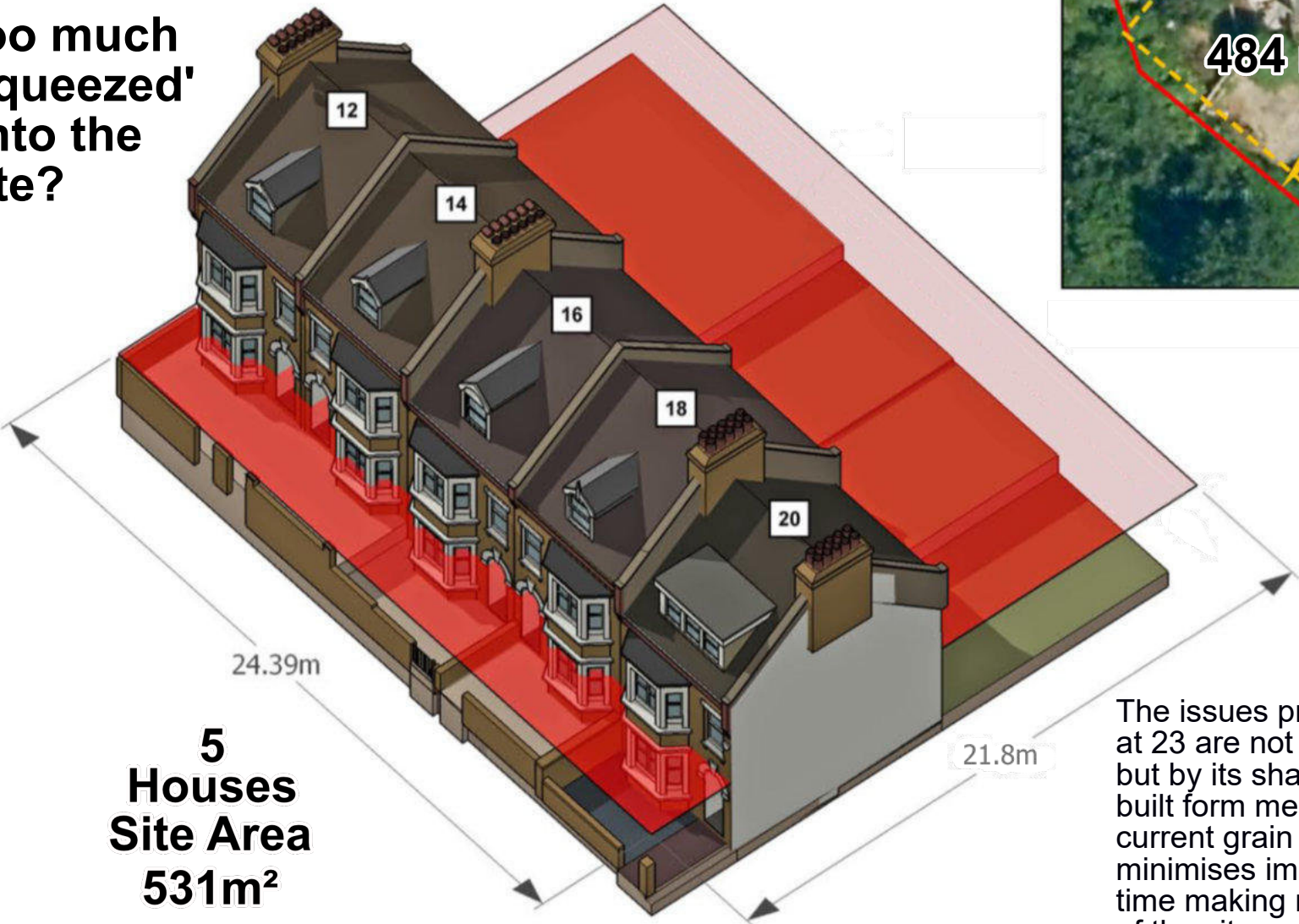


Existing site frontage



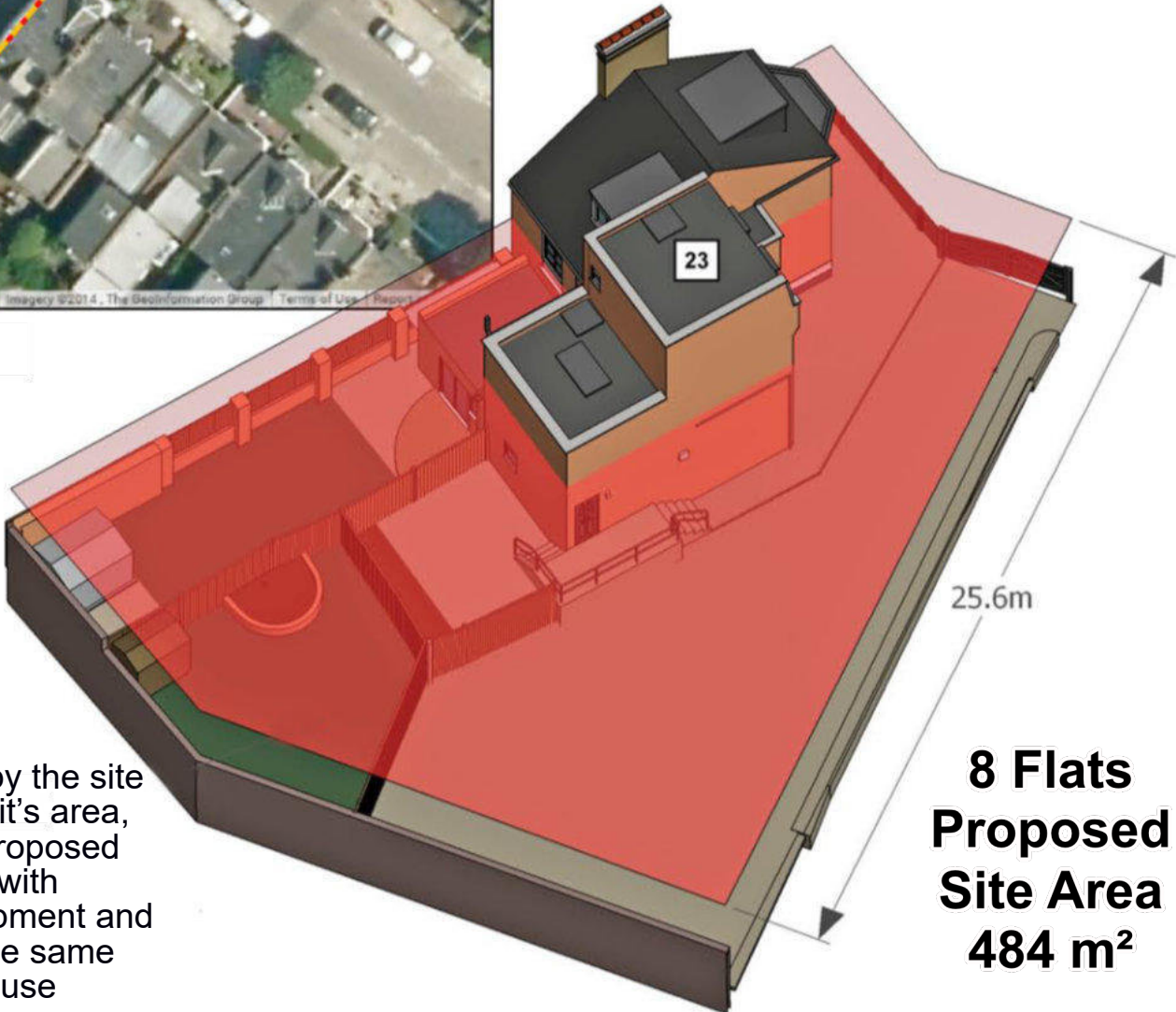
It is just not possible to understand the sites' size, shape and capacity just by looking at it from the street; which is the only view possible from the public realm. The narrow frontage gives the impression that the site is much smaller than it actually is.

Too much 'squeezed' onto the site?



5 Houses
Site Area
531m²

The issues presented by the site at 23 are not posed by it's area, but by its shape. The proposed built form meshes well with current grain of development and minimises impact. At the same time making maximum use of the site.



8 Flats
Proposed
Site Area
484 m²