

UNIT J: 2 PERSON 1 BEDROOM FLAT
 TOTAL AREA INCLUDING CUPBOARD SPACE
 : 52msq.

B	KITCHEN LAYOUT REVISED NEW DORMER ADDED	4.7.79
A	ROOM AREAS MARKED	19.4.79
NO	REVISION	DATE

DO NOT SCALE THIS DRAWING
 ALL DIMENSIONS TO BE CHECKED ON SITE
 © COPYRIGHT

HRA
 HODSON RIVERS ASSOCIATES
 ARCHITECTS AND INDUSTRIAL DESIGNERS
 2 RIDGMOUNT STREET LONDON WC1E 7AA 01 637 4898

PADDINGTON CHURCHES
 HOUSING ASSOCIATION

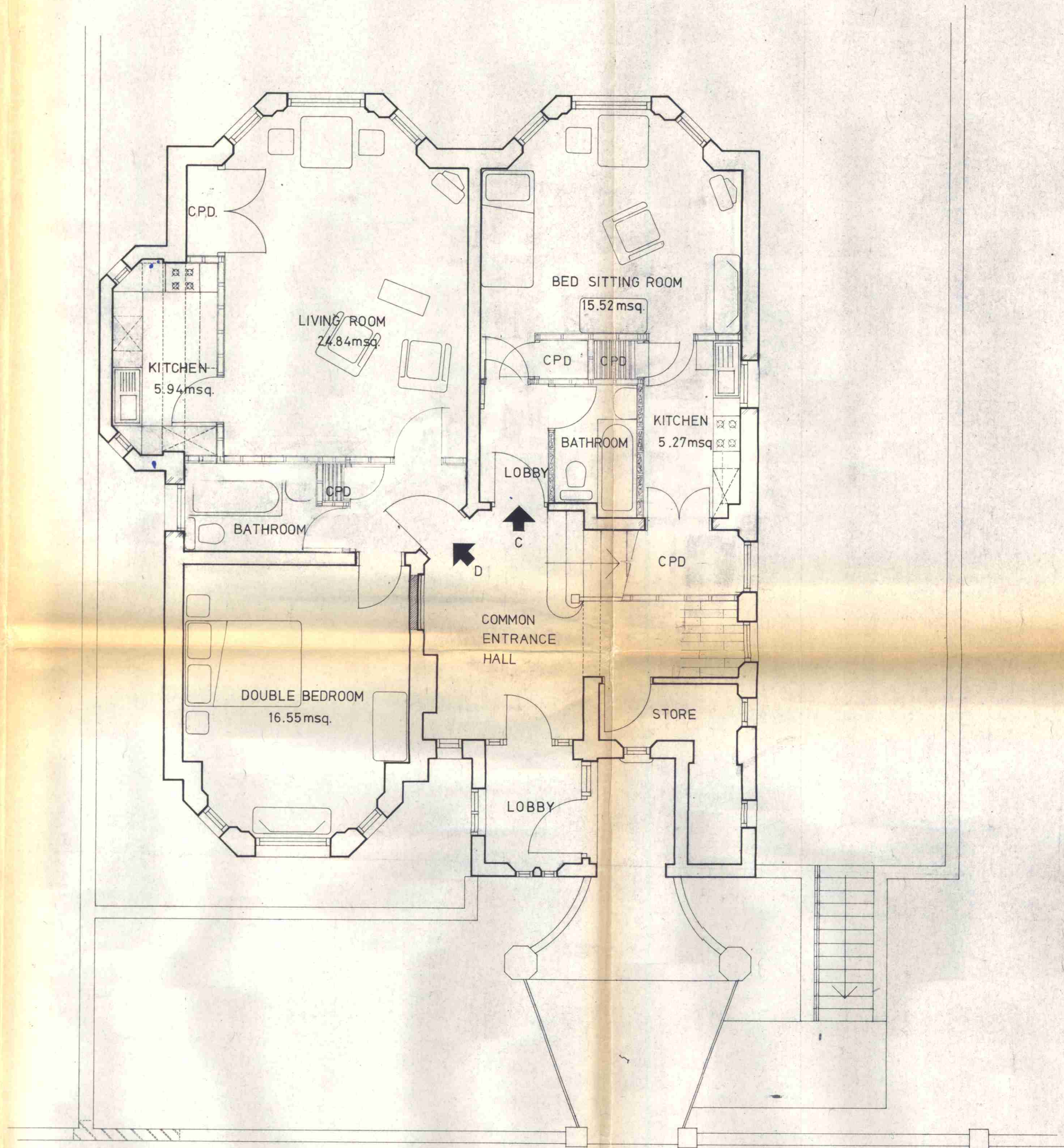
CTP/18/4/B/29546

47 ETON AVENUE
 LONDON N.W.3.

PROPOSED 3rd FLOOR

LONDON BOROUGH OF CAMDEN
 TOWN AND COUNTRY PLANNING ACTS
 23 JAN 1980
 PLANS APPROVED
 ON BEHALF OF THE COUNCIL

SCALE 1:50
 DRAWN SPL
 DATE APRIL 79
 DRAWING NO 186/205B



UNIT 'D': 2 PERSON 1 BEDROOM FLAT
 TOTAL AREA INCLUDING CUPBOARD
 SPACE: 53.83msq.

UNIT 'C': 1 PERSON BEDSIT
 TOTAL AREA INCLUDING CUPBOARD
 SPACE: 32.75 msq.

B	KITCHEN D LAYOUT REVISED	4.7.79
A	BEDSIT 'C' LAYOUT REVISED ROOM AREAS MARKED	19.4.79
NO	REVISION	DATE

DO NOT SCALE THIS DRAWING
 ALL DIMENSIONS TO BE CHECKED ON SITE
 © COPYRIGHT

HRA
 HODSON RIVERS ASSOCIATES
 ARCHITECTS AND INDUSTRIAL DESIGNERS
 2 RIDGMOUNT STREET LONDON WC1E 7AA 01 637 4898

PADDINGTON CHURCHES
 HOUSING ASSOCIATION

CTP/H8/4/3/2956

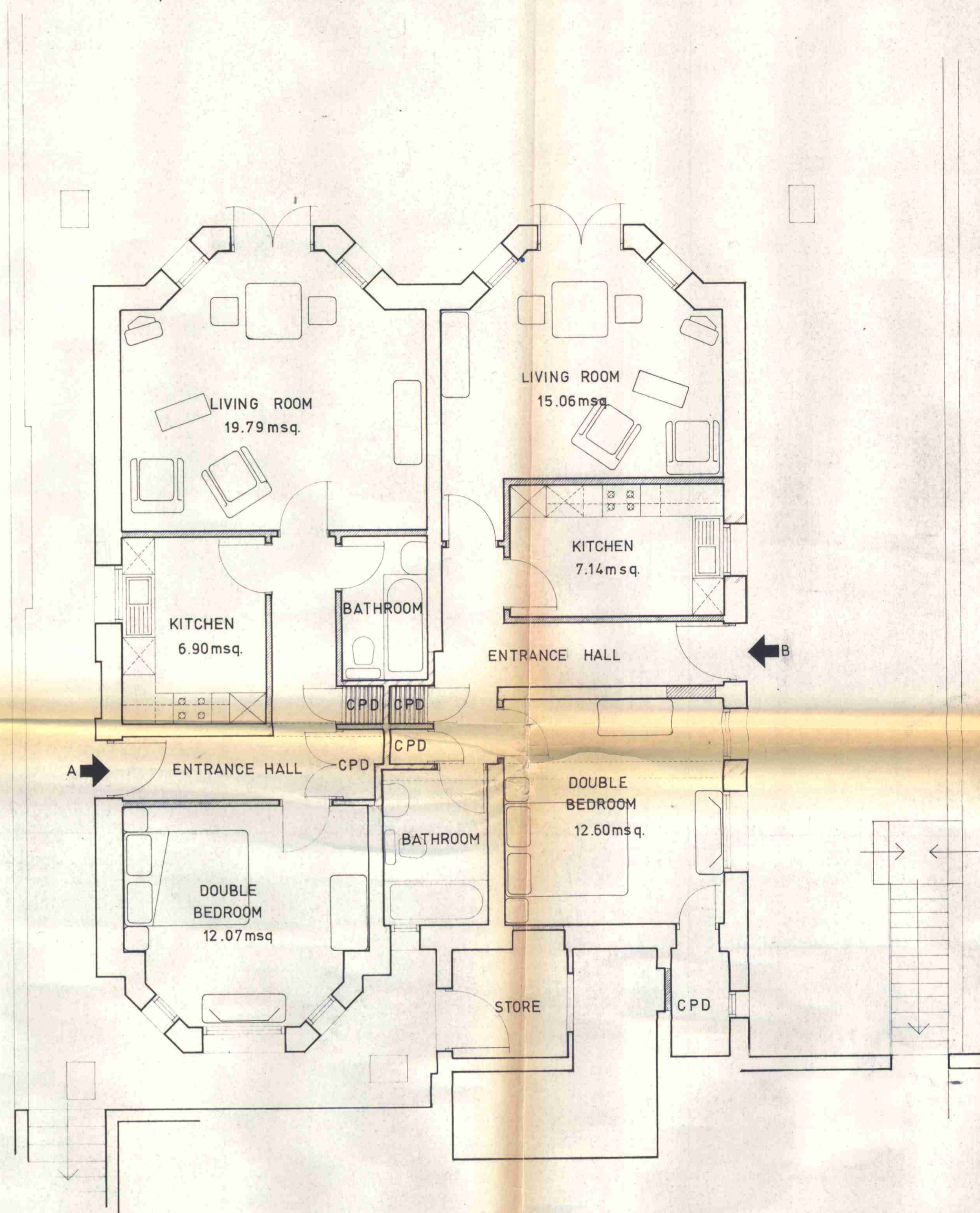
47 ETON AVENUE
 LONDON N.W.3.

LONDON BOROUGH OF CAMDEN
 TOWN AND COUNTRY PLANNING ACTS
 23 JAN 1980
 PLANS APPROVED
 ON BEHALF OF THE COUNCIL

PROPOSED GROUND FLOOR

LONDON BOROUGH OF CAMDEN
 TOWN AND COUNTRY PLANNING ACTS
 23 JAN 1980
 PLANS APPROVED
 ON BEHALF OF THE COUNCIL

SCALE 1:50
 DRAWN SPL
 DATE APRIL 79
 DRAWING NO 186/202B



UNIT A: 2 PERSON 1 BEDROOM FLAT
 TOTAL AREA INCLUDING CUPBOARD
 SPACE: 52.02msq.

UNIT B: 2 PERSON 1 BEDROOM FLAT
 TOTAL AREA INCLUDING CUPBOARD
 SPACE: 53.72msq.

NO	REVISION	DATE

DO NOT SCALE THIS DRAWING
 ALL DIMENSIONS TO BE CHECKED ON SITE
 © COPYRIGHT

HRA
 HODSON RIVERS ASSOCIATES
 ARCHITECTS AND INDUSTRIAL DESIGNERS
 2 RIDGMOUNT STREET LONDON WC1E 7AA 01 637 4898

PADDINGTON CHURCHES
 HOUSING ASSOCIATION

CTP/118/4/B/29546

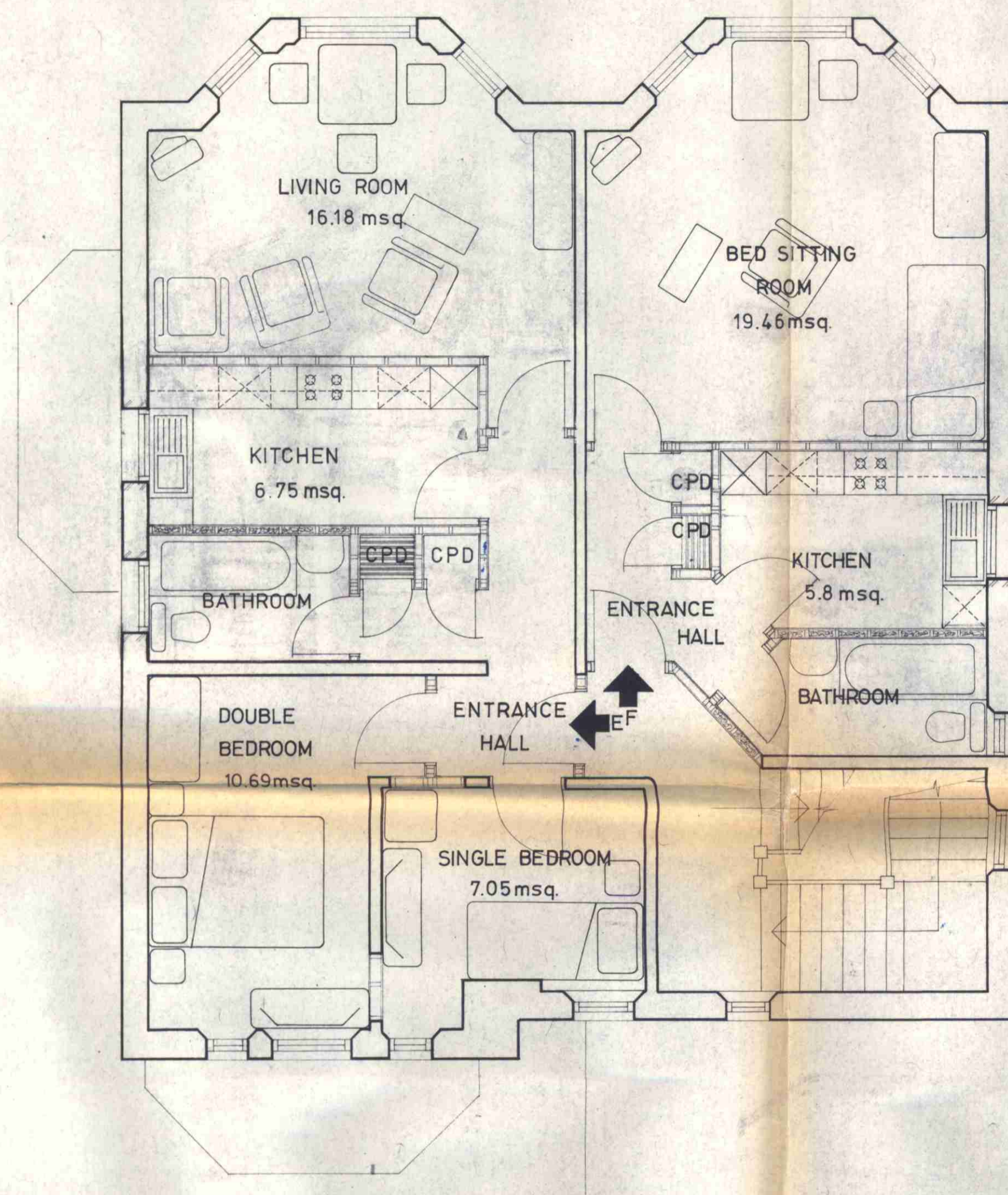
LONDON BOROUGH OF CAMDEN
 TOWN AND COUNTRY PLANNING ACTS
 23 JAN 1980
 PLANS APPROVED
 ON BEHALF OF THE COUNCIL

47 ETON AVENUE
 LONDON NW3

PROPOSED LOWER GROUND
 FLOOR.

LONDON BOROUGH OF CAMDEN
 TOWN AND COUNTRY PLANNING ACTS
 23 JAN 1980
 PLANS APPROVED
 ON BEHALF OF THE COUNCIL

SCALE 1:50
 DRAWN SPL
 DATE JULY '79
 DRAWING NO 186/207



UNIT E: 3 PERSON 2 BEDROOM FLAT
 TOTAL AREA INCLUDING CUPBOARD
 SPACE 52.32msq.

UNIT F: 1 PERSON BEDSIT
 TOTAL AREA INCLUDING CUPBOARD
 SPACE 34.16msq.

A	KITCHENS ENLARGED	4.7.79
NO	REVISION	DATE

DO NOT SCALE THIS DRAWING
 ALL DIMENSIONS TO BE CHECKED ON SITE
 © COPYRIGHT

HRA
 HOODSON RIVERS ASSOCIATES
 ARCHITECTS AND INDUSTRIAL DESIGNERS
 2 RIDGMOUNT STREET LONDON WC1E 7AA 01 637 4898

PADDINGTON CHURCHES
 HOUSING ASSOCIATION

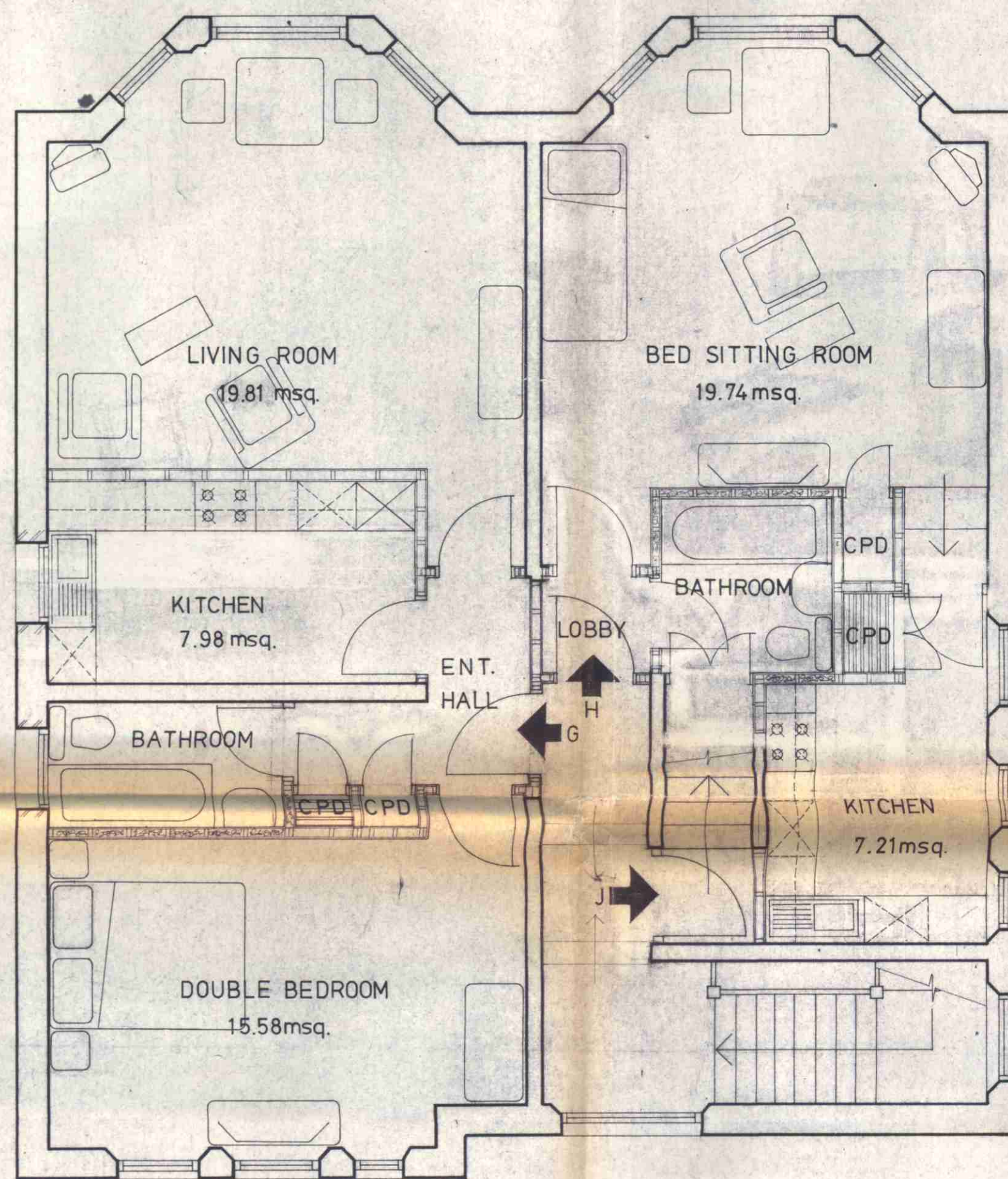
CTP/H8/4/B/20566

47 ETON AVENUE
 LONDON N.W.3

LONDON BOROUGH OF CAMDEN
 TOWN AND COUNTRY PLANNING AUTHORITY
 23 JAN 1980
 PLANS APPROVED
 ON BEHALF OF THE COUNCIL

PROPOSED 1st FLOOR.

SCALE 1:50
 DRAWN SPL
 DATE MAY 79
 DRAWING NO 186/206A



UNIT 'G': 2 PERSON 1 BEDROOM FLAT
 TOTAL AREA INCLUDING CUPBOARD
 SPACE : 53.01msq

UNIT 'H': 1 PERSON BEDSIT
 TOTAL AREA INCLUDING CUPBOARD
 SPACE : 35.21msq

B	KITCHEN 'G' ENLARGED	4.7.79
	KITCHEN 'H' LAYOUT REVISED	
A	ROOM AREAS MARKED	19.4.79

NO	REVISION	DATE
----	----------	------

DO NOT SCALE THIS DRAWING
 ALL DIMENSIONS TO BE CHECKED ON SITE
 © COPYRIGHT

HRA
 HODSON RIVERS ASSOCIATES
 ARCHITECTS AND INDUSTRIAL DESIGNERS
 2 RIDGMOUNT STREET LONDON WC1E 7AA 01 637 4898

PADDINGTON CHURCHES
 HOUSING ASSOCIATION

CT/HR/4B/29546

47 ETON AVENUE
 LONDON N.W.3.

PROPOSED 2nd FLOOR

LONDON BOROUGH OF CAMDEN
 TOWN AND COUNTRY PLANNING ACTS
 23 JAN 1980
 PLANS APPROVED
 ON BEHALF OF THE COUNCIL

SCALE 1:50
 DRAWN SPL
 DATE APRIL 79
 DRAWING NO 186/204B