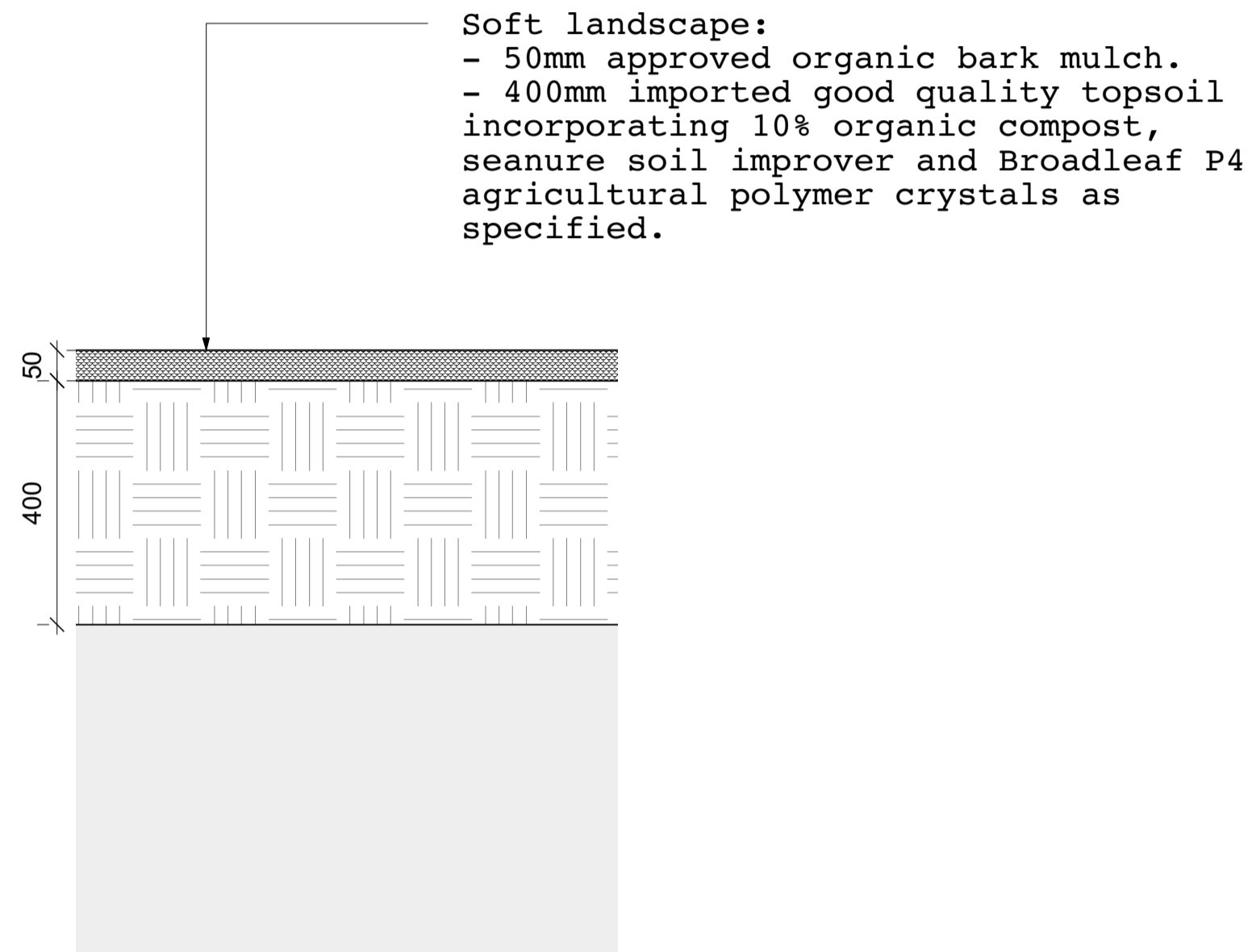


**SOFT LANDSCAPE  
PLANTING SECTION**

**LOCATION PLAN 1:200**

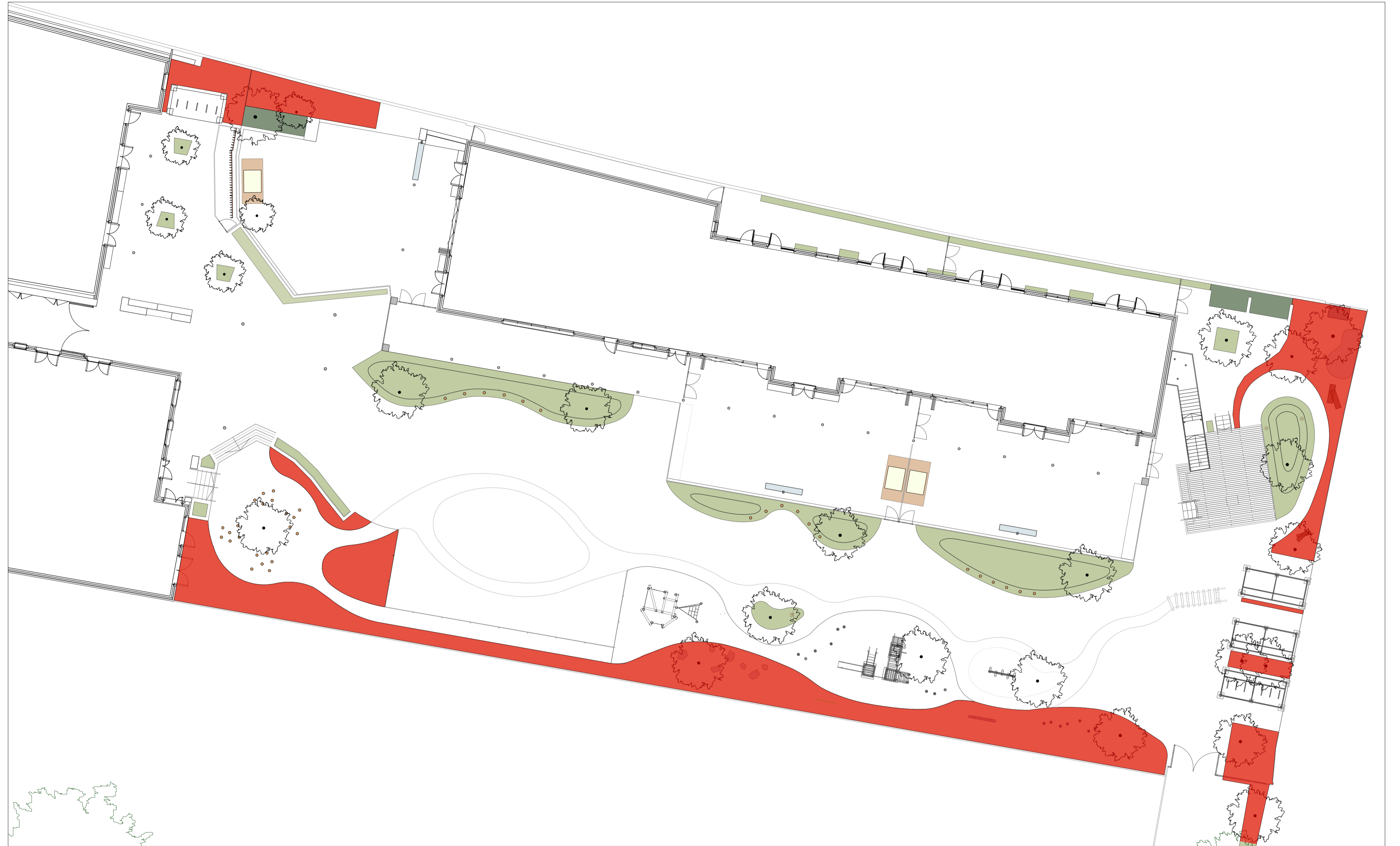
TYPICAL DETAIL A




-For falls/levels refer to current revision of detail KL037.G.01.LP1.

-Where soft landscape meets building elements refer to architect's information.

-Where soft landscape meets acoustic fence and closeboard timber fence foundations refer to subcontractor information.



 Planting areas referring to typical detail A.

Notes:

- Soil analysis to be submitted for topsoil, for approval
- Refer to current revision of Planting Plan (KL037.G.07.PP1) and Planting Schedule (KL037.G.Doc01.PS1) for plant species and sizes.

**JCLA**

3A Iliffe Yard  
LONDON SE17 3QA  
Telephone  
+44 (0)207 703 3270

www.jcla.co.uk

Notes

- Do not scale from drawings.
- To be read in conjunction with all relevant Architects', Services and Structural Engineers' drawings.
- All existing site, tree and building information has been compiled from different sources.
- All dimensions to be checked on site.

Revisions

**CONSTRUCTION ISSUE**

**Project** Kingsgate Liddell

**Project No.** KL037

**Client** Camden council

**Date** 04.08.2017

**Scale** 1:10 @ A1 / 1:200 @ A3

**Drawing Name.** Typical planting detail

**Dwg No.** KL037.G.SD.618

Revision \*