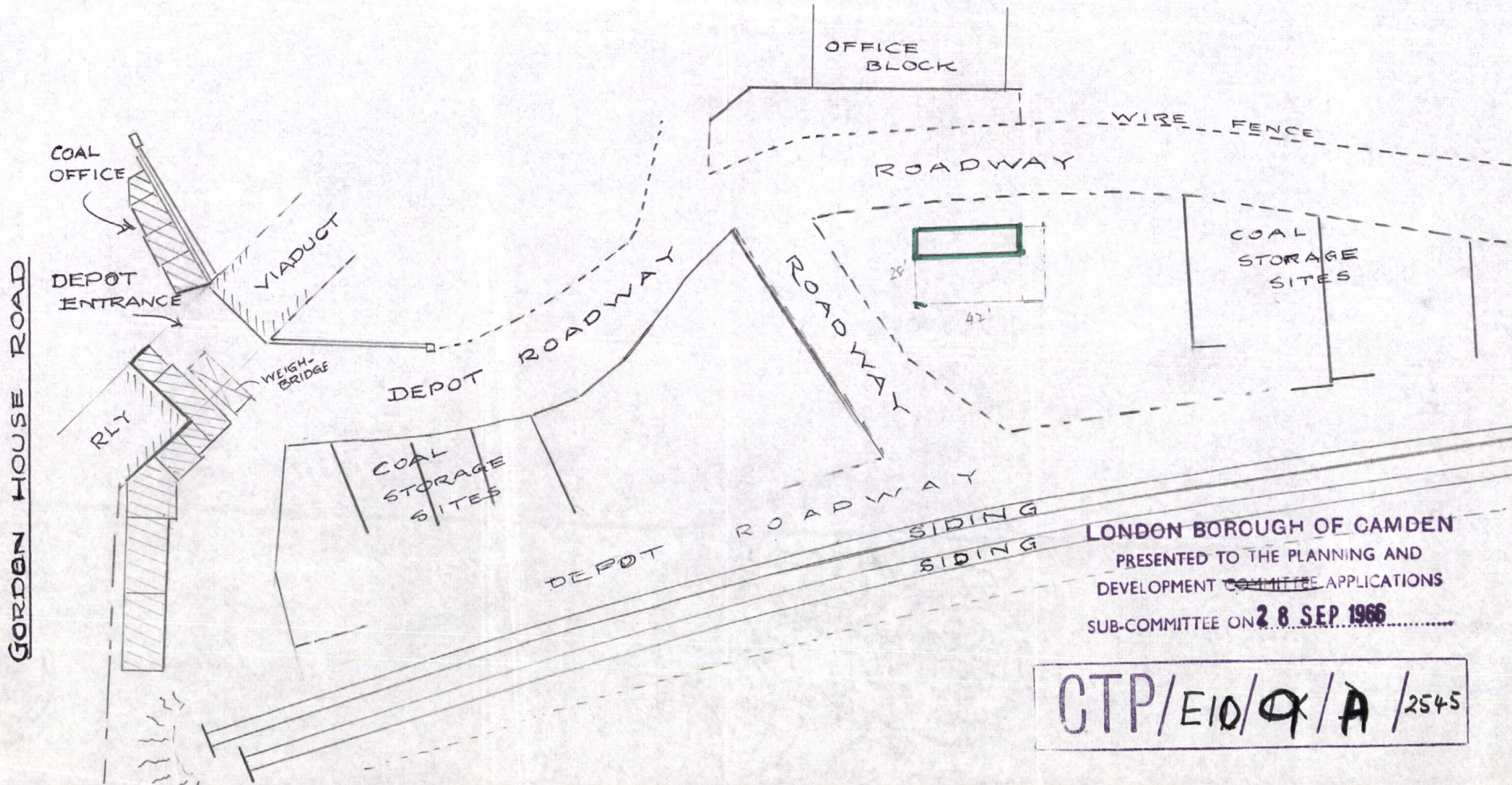


B. R

GOSPEL OAK DEPOT

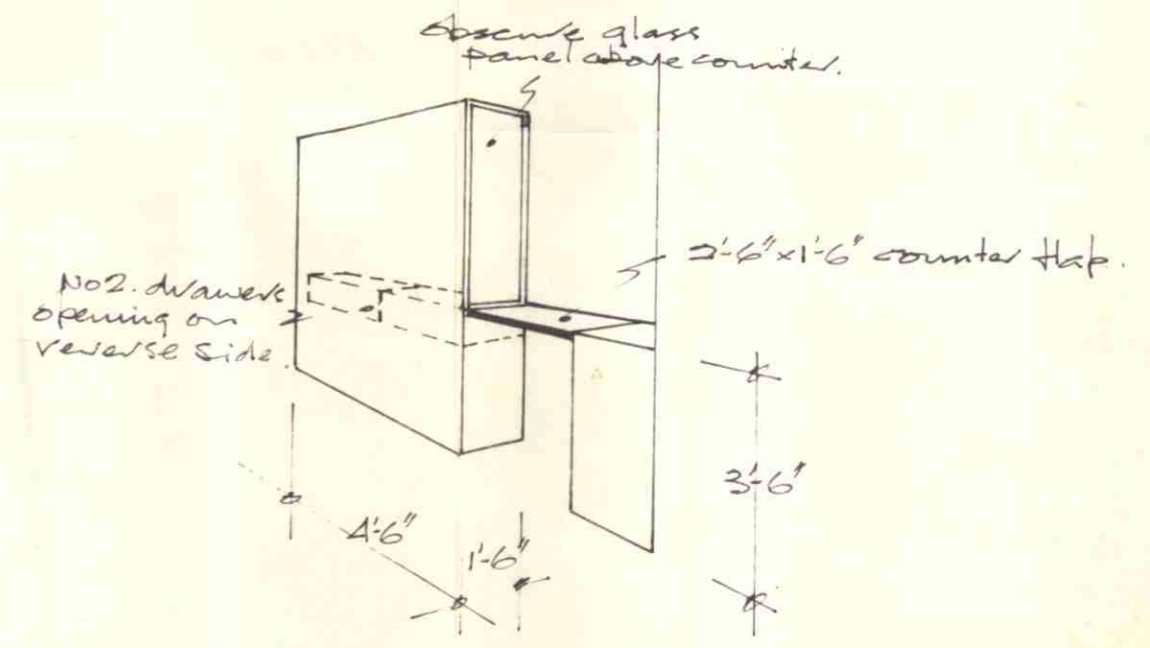
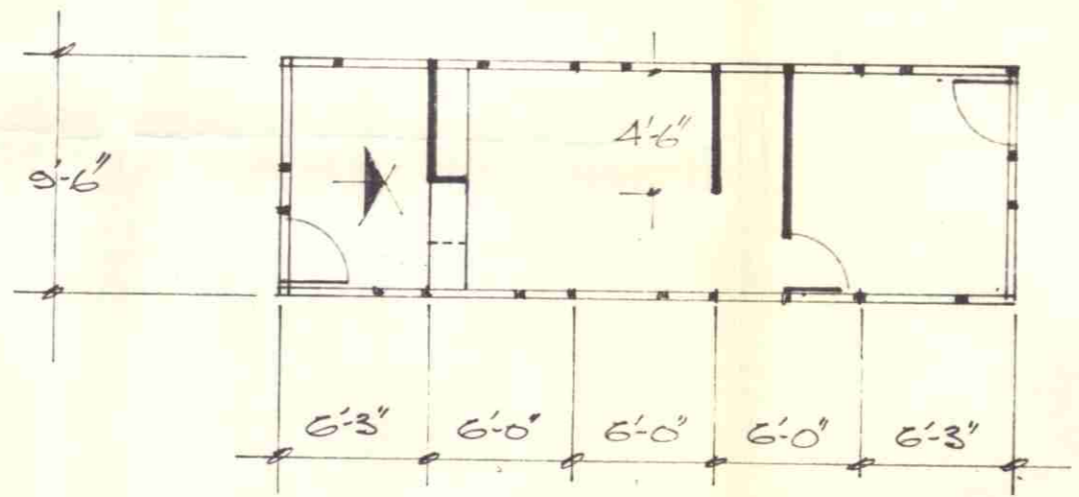
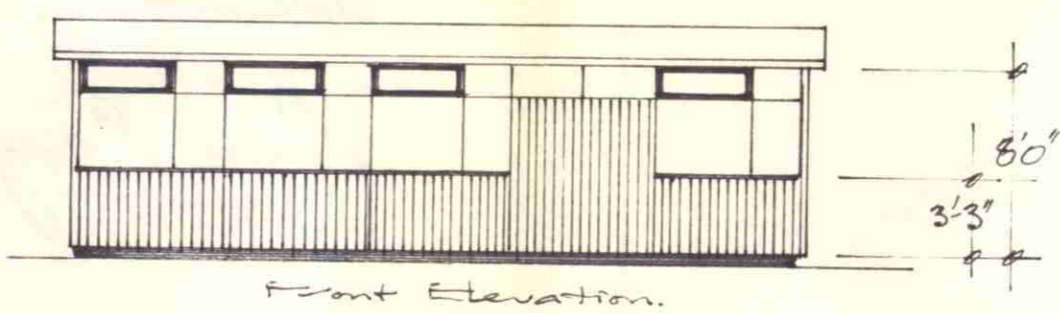
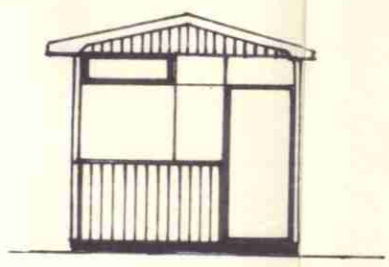
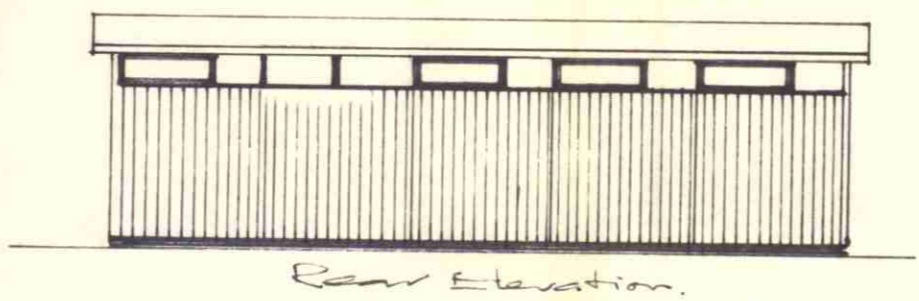


GORDEN HOUSE ROAD

LONDON BOROUGH OF CAMDEN
PRESENTED TO THE PLANNING AND
DEVELOPMENT COMMITTEE APPLICATIONS
SUB-COMMITTEE ON 28 SEP 1966

CTP/E10/Q/A/2545

Proposed demountable building - 30' 6" x 9' 6" x 8'
 Cedar Pitched Roof Timber Building
 fully lined incorporating Wernick W.K.6.
 standardized component building.



LONDON BOROUGH OF CAMDEN
 PRESENTED TO THE PLANNING AND
 DEVELOPMENT ~~COMMITTEE~~ APPLICATIONS
 SUB-COMMITTEE ON 2.8.SEP.1966.....

CTP/F10/9/A/2545

REVISIONS

TITLE 30'6" x 9'6" WKG Building.
 for J. L. Davies & Co Ltd.

S. WERNICK & SONS LIMITED.			
BILLERICAY WOLVERHAMPTON BROWNHILLS			
DRAWN	LWS	SCALES	DRWG. No.
DATE	1.8.66	1/8" = 12"	4474 S
COST			

