

Opening up investigation 28<sup>th</sup> November 2018 and proposals to reopen and widen door



South Wall of Office 8 with planted false panelling above dado removed to show former opening



Close up to show plain boarded wall with evidence of fixings for stretched oilcloth (canvas) lining to this side



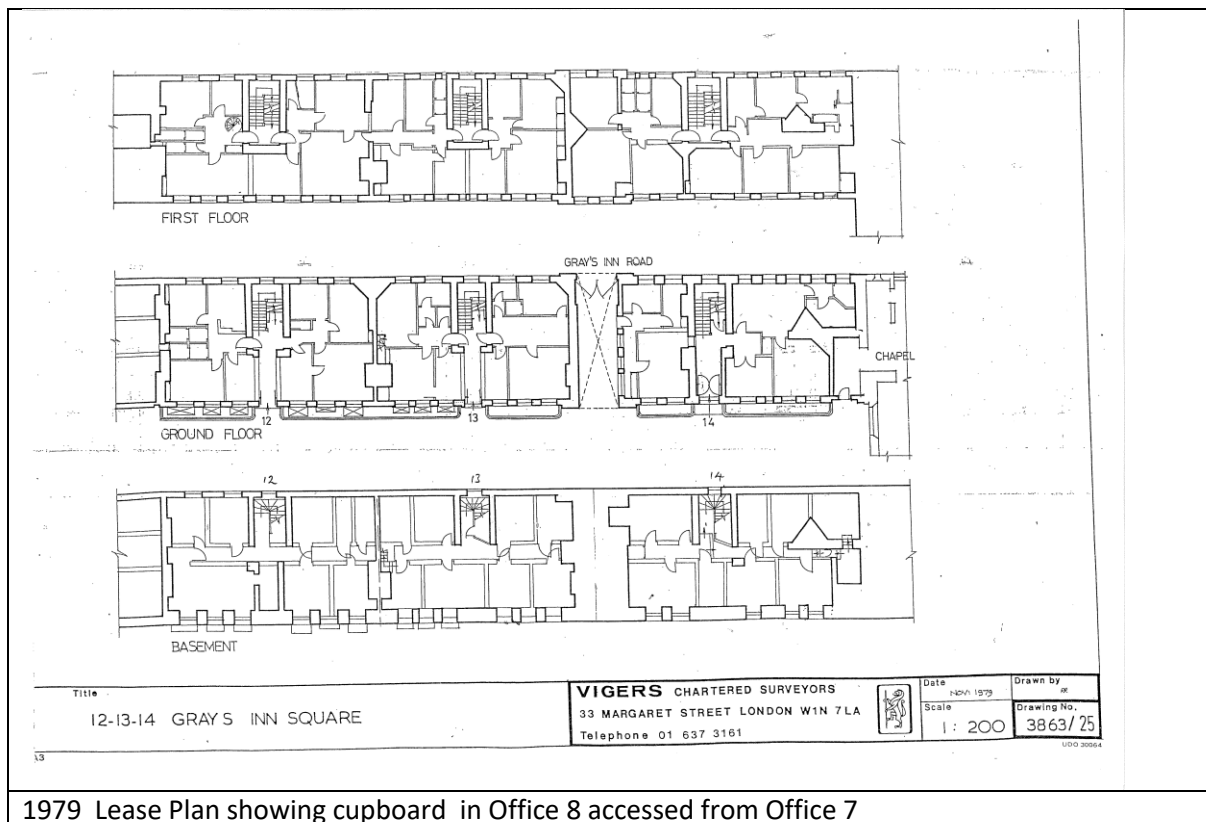
Board lifted to reveal back of full height panelling to Office 7 (now obscured in Office 7 by stud wall added for sound proofing)

## ANALYSIS

The timber partition between office 7 and 8 was originally finished with full height panelling to Office 8 and with a panelled Dado to Office 7 with a painted oilcloth (canvas) lining above.

At some point an opening was cut between the two rooms. 1979 lease plans show that at that date a cupboard had been formed in the corner of Office 8 accessed via the opening from Office 7.

Subsequently a plasterboard and stud partition was added to Office 7 to improve the sound separation between the two rooms and planted false panelling added above dado height to Office 8. It is assumed that the cupboard was removed and the opening blocked at the same time. The date for these alterations is not known.



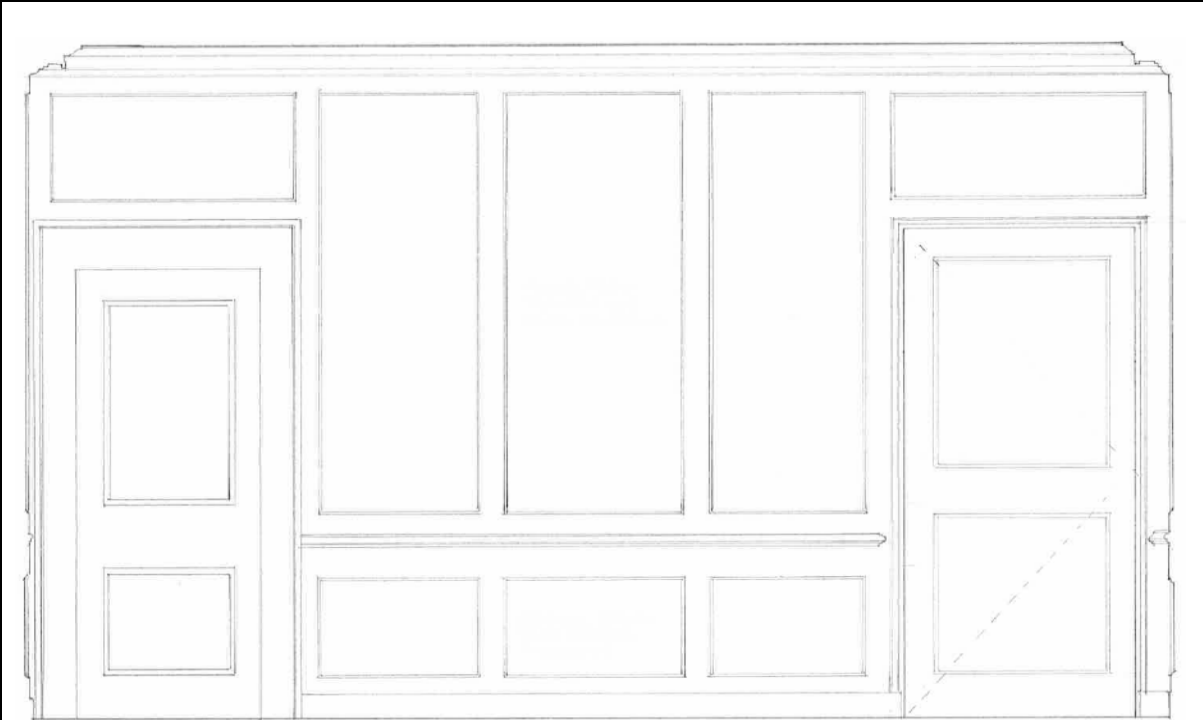
1979 Lease Plan showing cupboard in Office 8 accessed from Office 7

## PROPOSALS

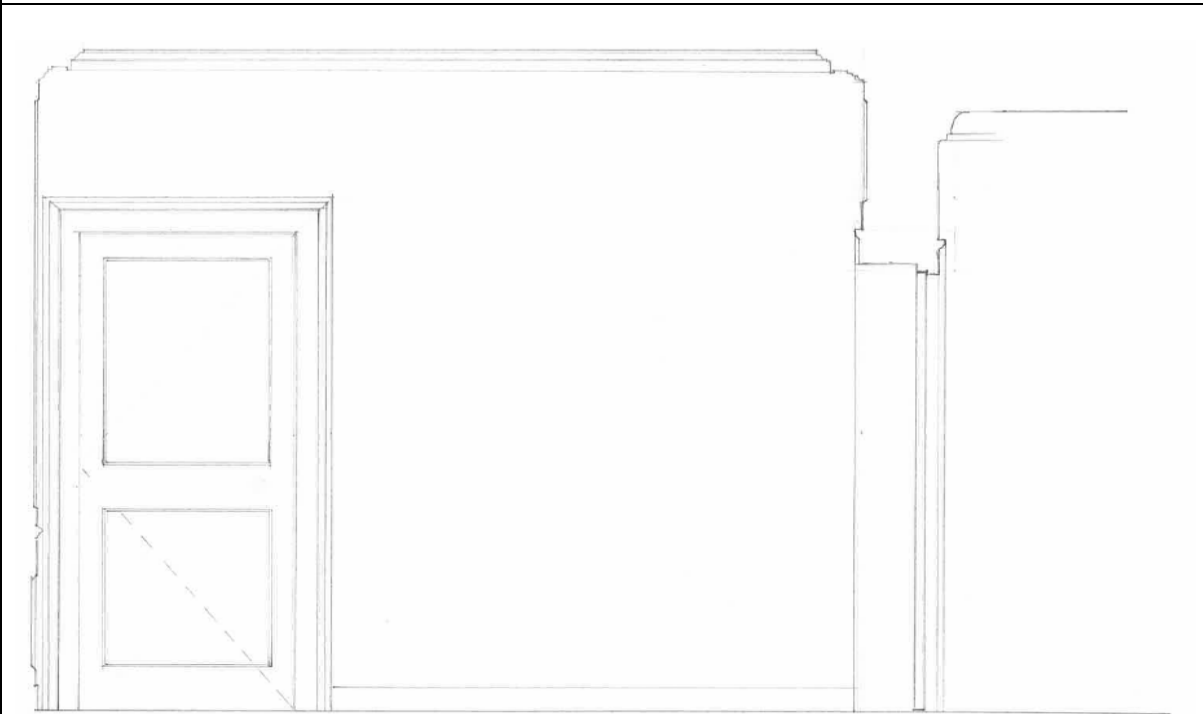
It is proposed to re-open the doorway between Office 7 and Office 8, widening this to the full width of the panel. The panel has already been cut to accommodate the existing doorway and in the event the panelling was to be fully restored, the entire panel would need to be replaced; it is therefore not considered that widening the existing opening causes material further damage to historic fabric. The panel framing to the original concealed panelling in Office 7 remains intact and the alterations to the planted false panelling in Office 8 are appropriate to the character and appearance of this room.

These proposals supersede the proposals for double doors shown on the original application for Listed Building Consent.

Room elevation sketches are included below within the report and scale plans, elevation and details attached separately.



Proposed south elevation of Office 8 (existing former opening enlarged to full panel width)



Proposed north elevation of Office 7