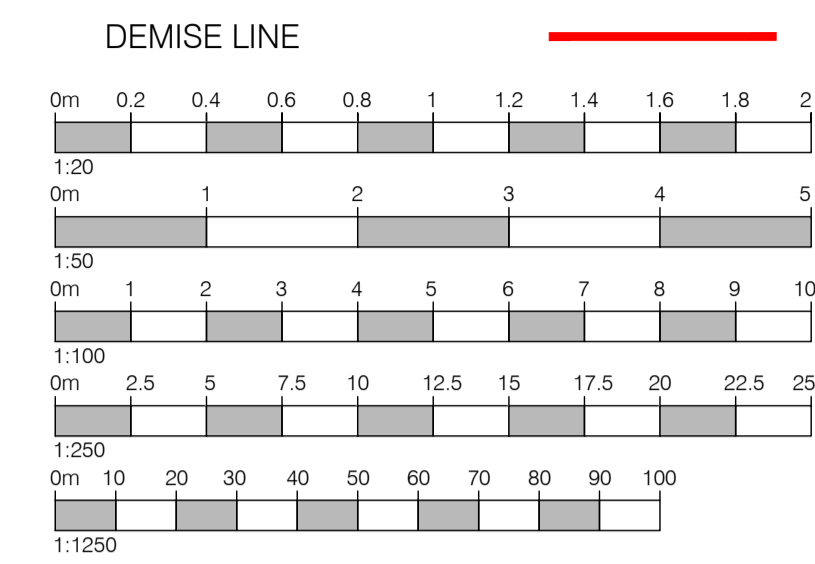


ALL DIMENSIONS TO BE CHECKED ON SITE.
COPYRIGHT PROTECTED.

PLANNING



SIGNS 'A' & 'C' - FASCIA SIGN
(ILLUMINATED SIGN AS SHOWN ON ELEVATION)

MATERIAL SPECS:
INDIVIDUAL LETTERS IN BLACK METAL, POWDER COATED IN MATT BLACK, RAL 9004.
LETTERS TO EXTRUDE 25mm FROM FACADE/ MOUNTING SURFACE.
FRAME TO BE IN WHITE, RAL 9003

SIGNS 'A' HUNG FROM BULKHEADS ABOVE DOORS & SIGN 'C' FIXED TO MEZZANINE BULKHEAD, BOTH NOT FIXED OR TOUCHING GLAZING AS PER DEVELOPERS GUIDELINES

SIGN 'B' - FLAG SIGN
(NON-ILLUMINATED FLAG SIGN AS SHOWN ON ELEVATION)

MATERIAL SPECS:
MATT BLACK RAL 9004 POWDER COATED METAL PLATE.
BLACK OPAL ACRYLIC WH9704 BODY.
MATT BLACK, RAL 9004 POWDER COATED PLATE BRACKET.

GENERAL
EACH SIGNAGE MANUFACTURER MUST COMPLETE THEIR OWN SET OF PROJECT SPECIFIC DESIGN DRAWINGS FOR APPROVAL BY THE COS DESIGN TEAM.
THE DETAILS MATERIAL FINISHES AND QUALITY EXPECTED ARE CLEARLY INDICATED. THESE MUST BE ADHERED TO WITHOUT DEVIATION IT WILL BE ASSUMED BY COS THAT ALL MANUFACTURERS ARE AWARE OF THIS SPECIFICATION AND THAT IT IS BEING FOLLOWED EXACTLY.
NO DEVIATIONS WILL BE ACCEPTED UNLESS AGREED IN ADVANCE BY THE COS DESIGN TEAM.

02	27.11.18	NOTES & SIGNAGE UPDATED AS PER PLANNING OFFICERS COMMENTS	LS	RS
01	25.06.18	SIGNAGE UPDATES AS PER COS COMMENTS ON 21.06.18.	AA	RS
00	22.05.18	FIRST ISSUE	AA	RS

REV DATE DESCRIPTION DRAWN CHECKED

CLIENT



H&M Hennes & Mauritz UK & Ireland Ltd.
1st Floor, 25Argyll Street, London, W1F 7TS. TEL: +44 (0) 207 434 8800

PROJECT
**UNIT 3. COAL DROPS YARD
KINGS CROSS**

DRAWING
**ADVERTISEMENT CONSENT
PROPOSED SIGNAGE
ELEVATIONS AND DETAILS**

CONSULTANT

18 Farnham Road
Guildford
Surrey
GU1 4XA

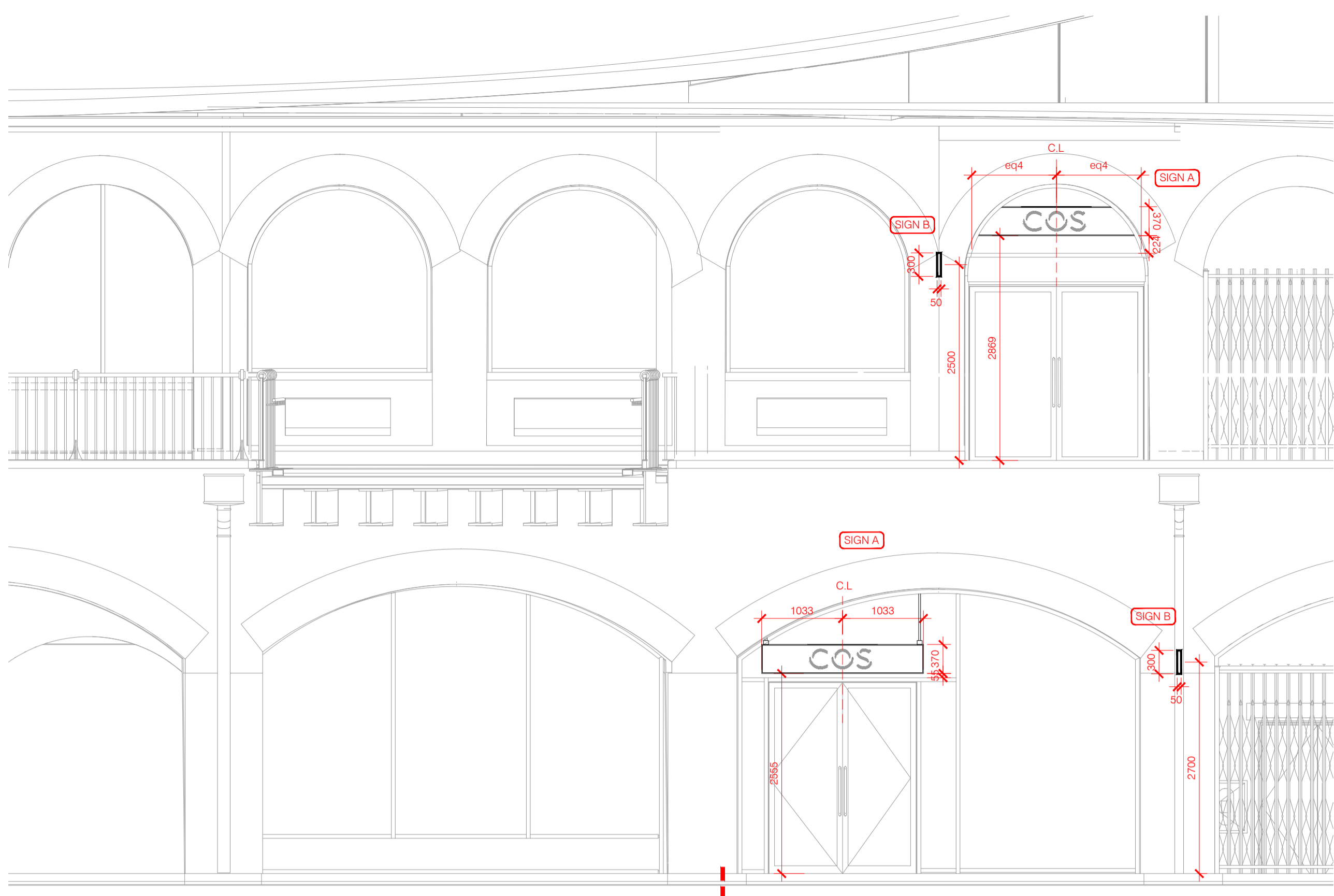
Tel: 01483 560908
Fax: 01483 560660
Email: guildford@lewisandhickey.com

CONSULTANT No	SCALE	DATE	DRAWN	CHECKED
---------------	-------	------	-------	---------

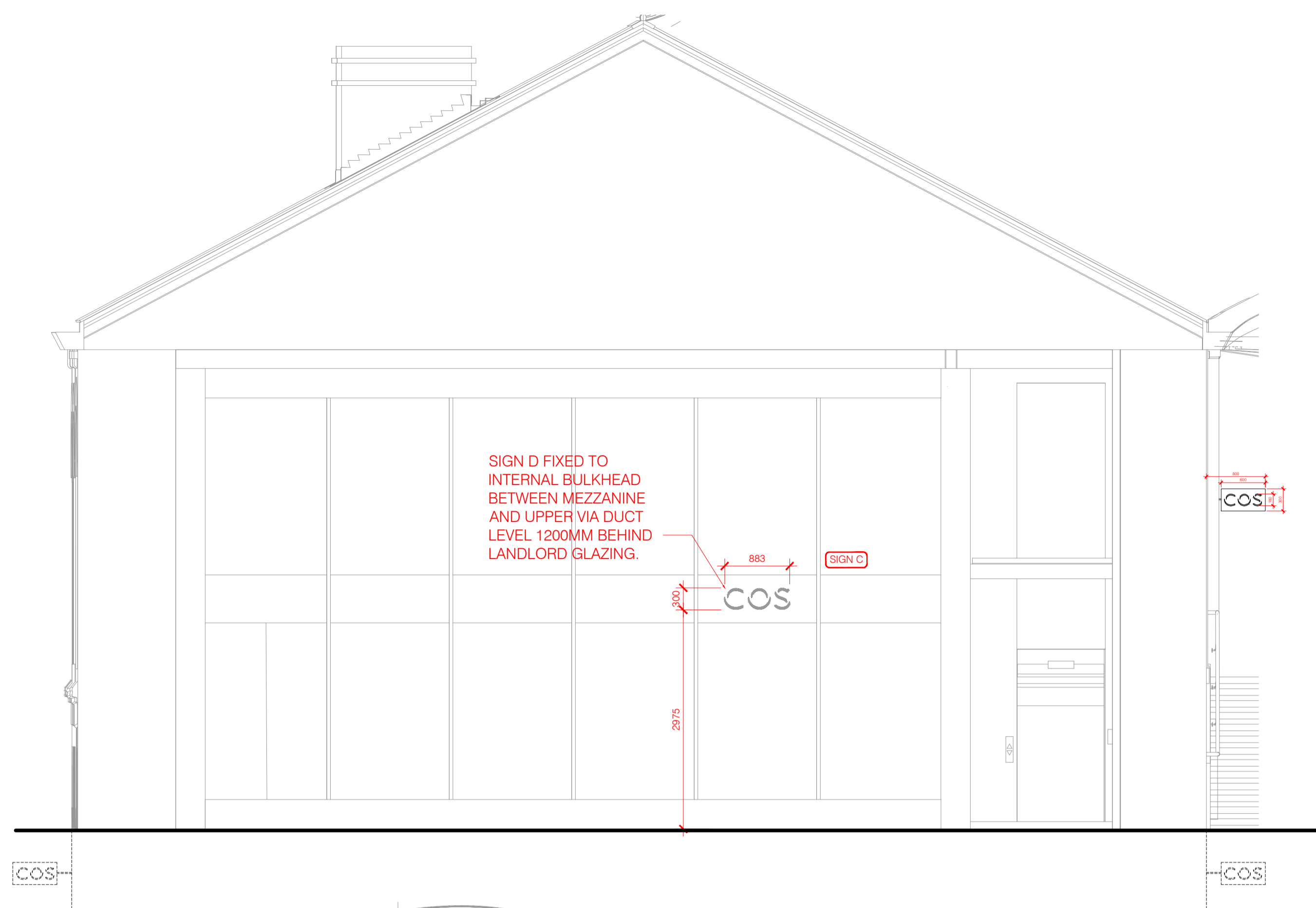
G4424 VARIES 22.05.18 AA RS

PROJECT No	DISCIPLINE	DRAWING No	STATUS	REV
------------	------------	------------	--------	-----

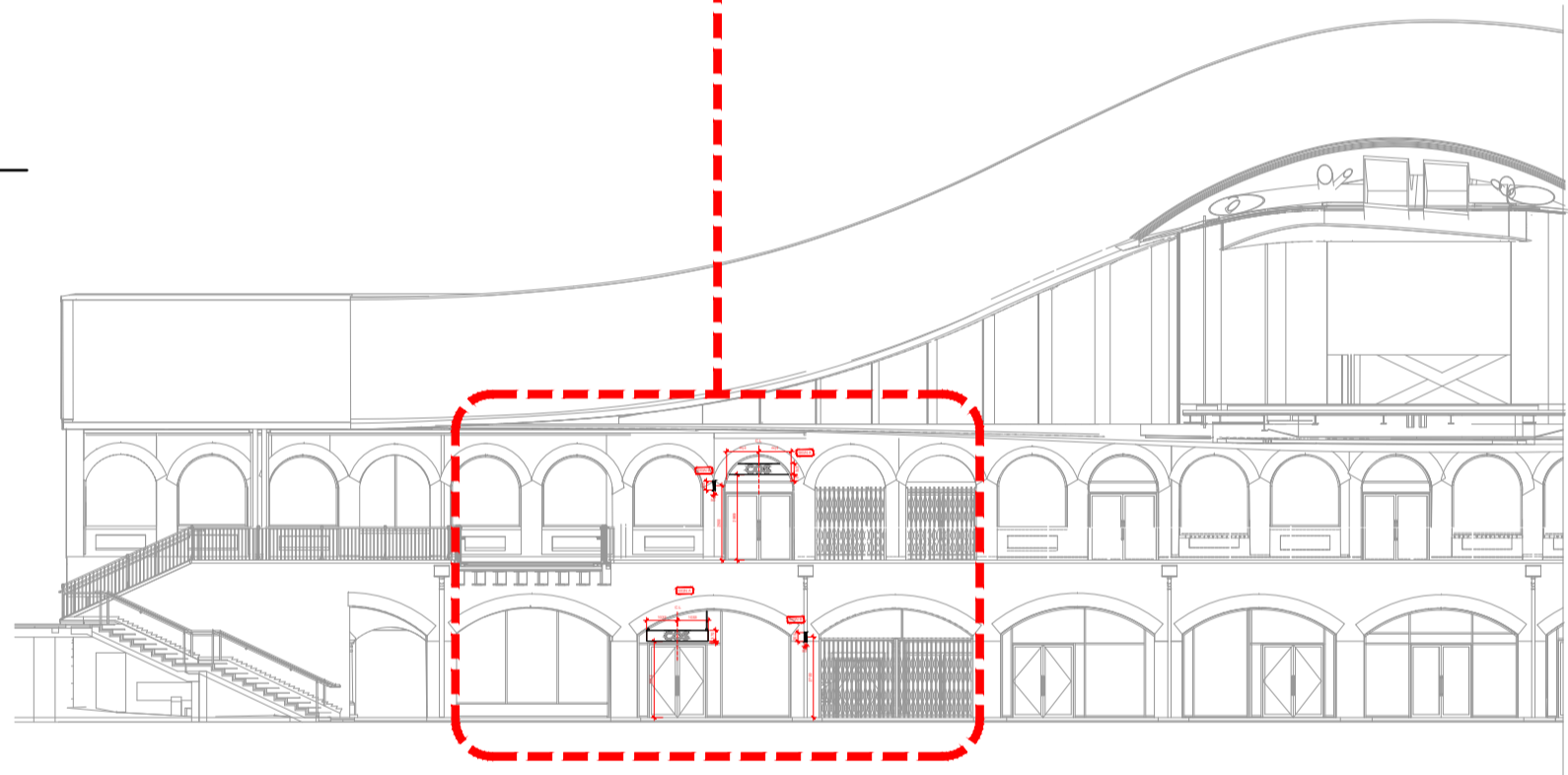
GB438 A 403 P 02



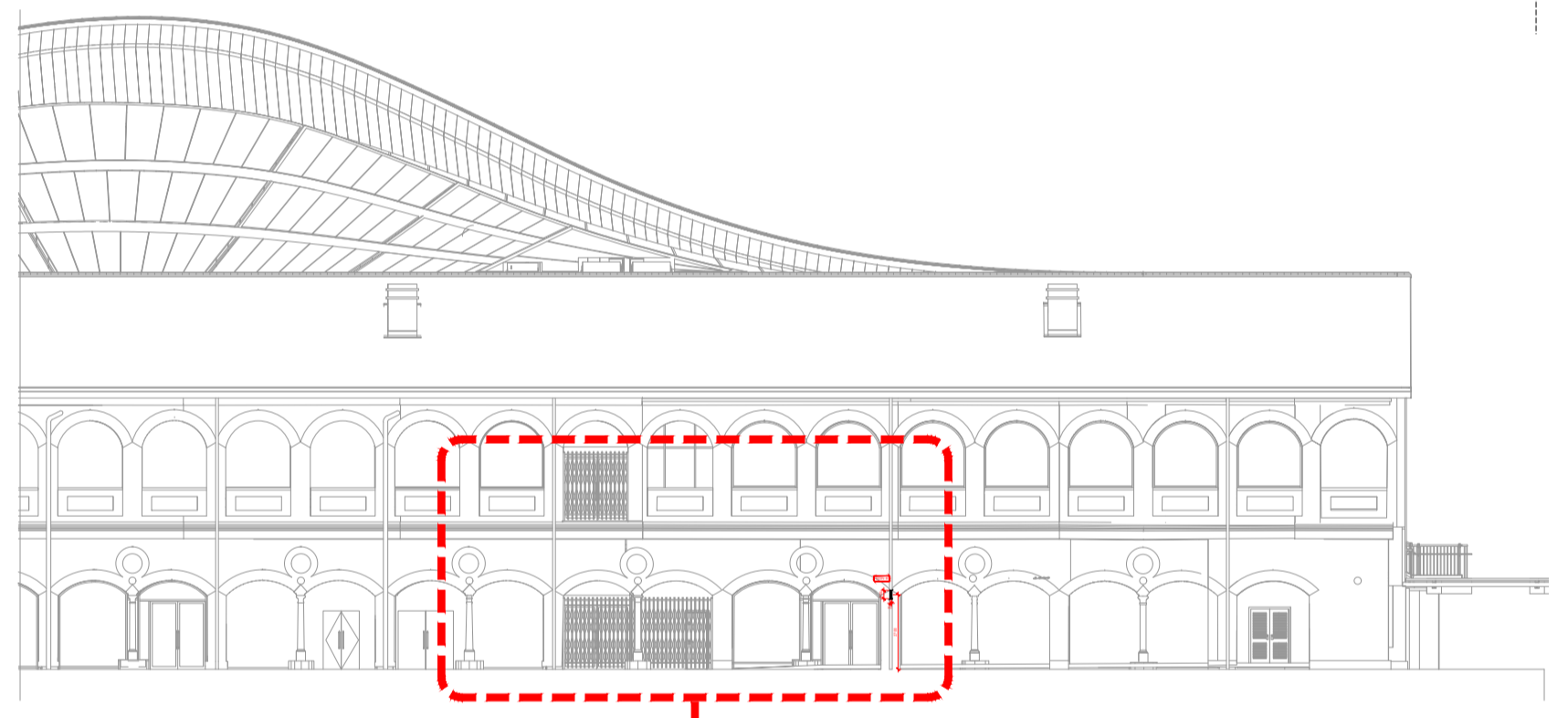
01 WEST ELEVATION
403 1:50 DIMENSIONS



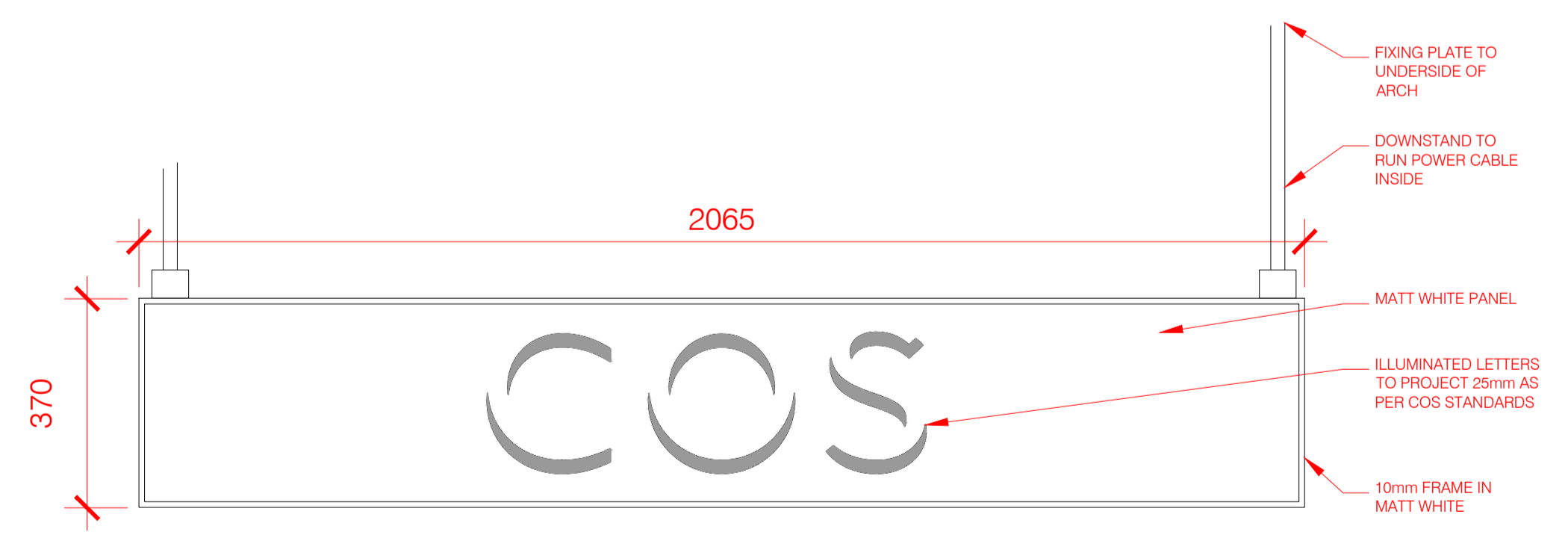
02 NORTH ELEVATION
403 1:50 DIMENSIONS



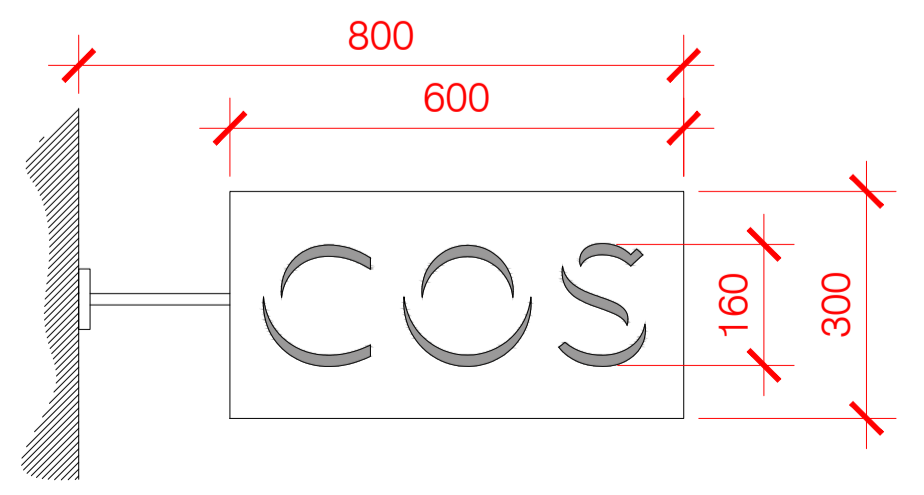
03 WEST ELEVATION
403 1:250



04 EAST ELEVATION
403 1:250



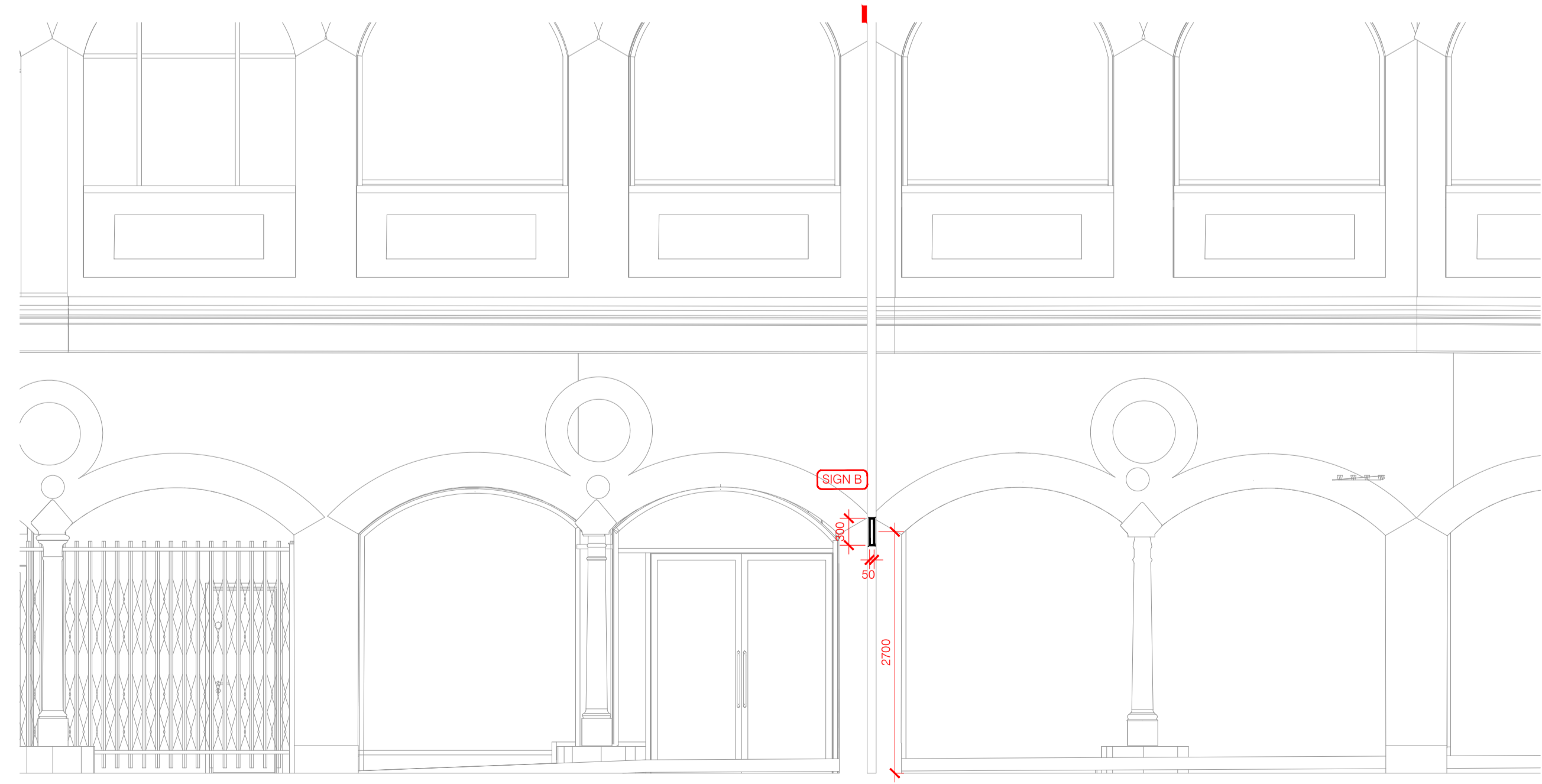
05 PROPOSED SIGN 'A'
403 1:10



06 PROPOSED SIGN 'B'
403 1:10



07 PROPOSED SIGN 'C'
403 1:10



08 EAST ELEVATION
403 1:50