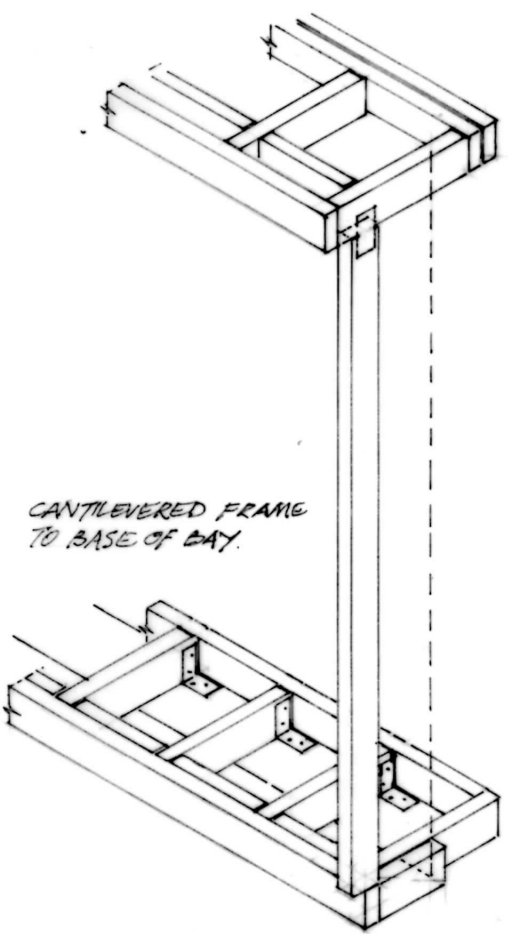
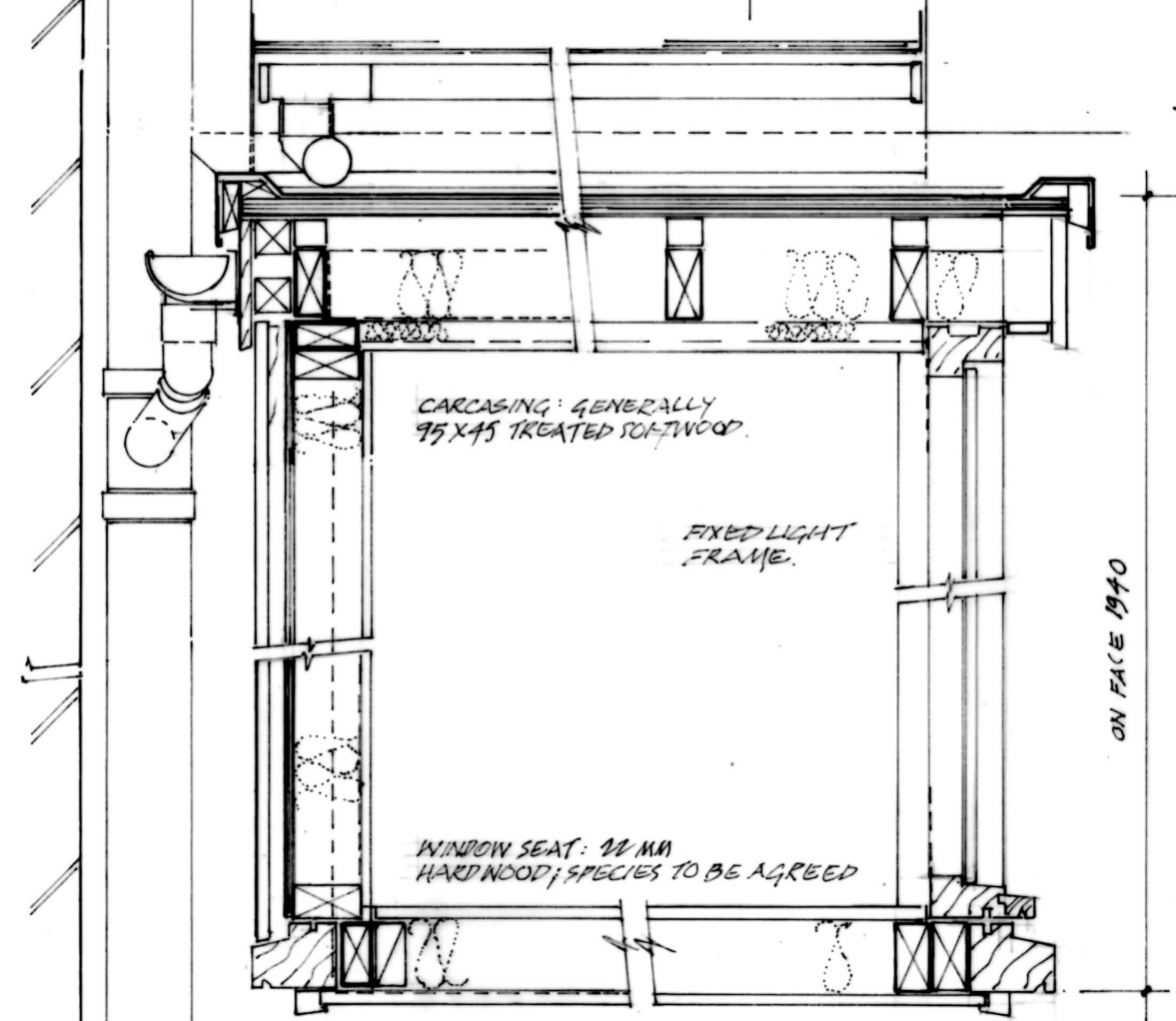


KEY ELEVATION
1:20



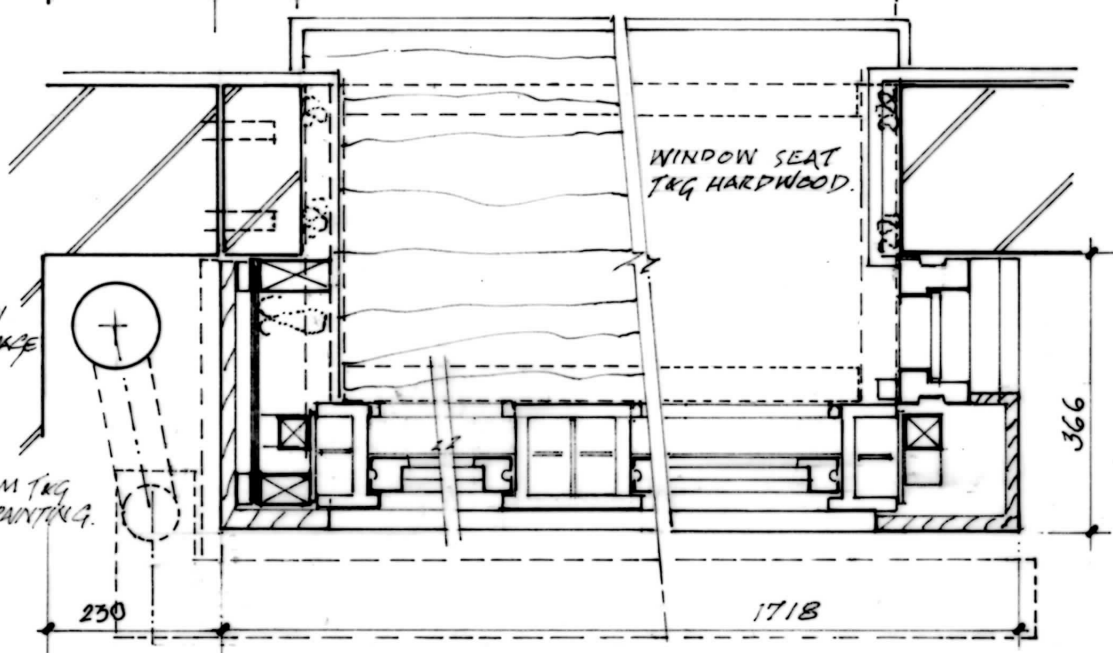
AXONOMETRIC:
STRUCTURE . 1:30

HOPPER HEAD REMOVED
FROM EX'G R.W.P. - ROOF
DRAINAGE COMBINED
& TAKEN TO NEW CONNECTION.

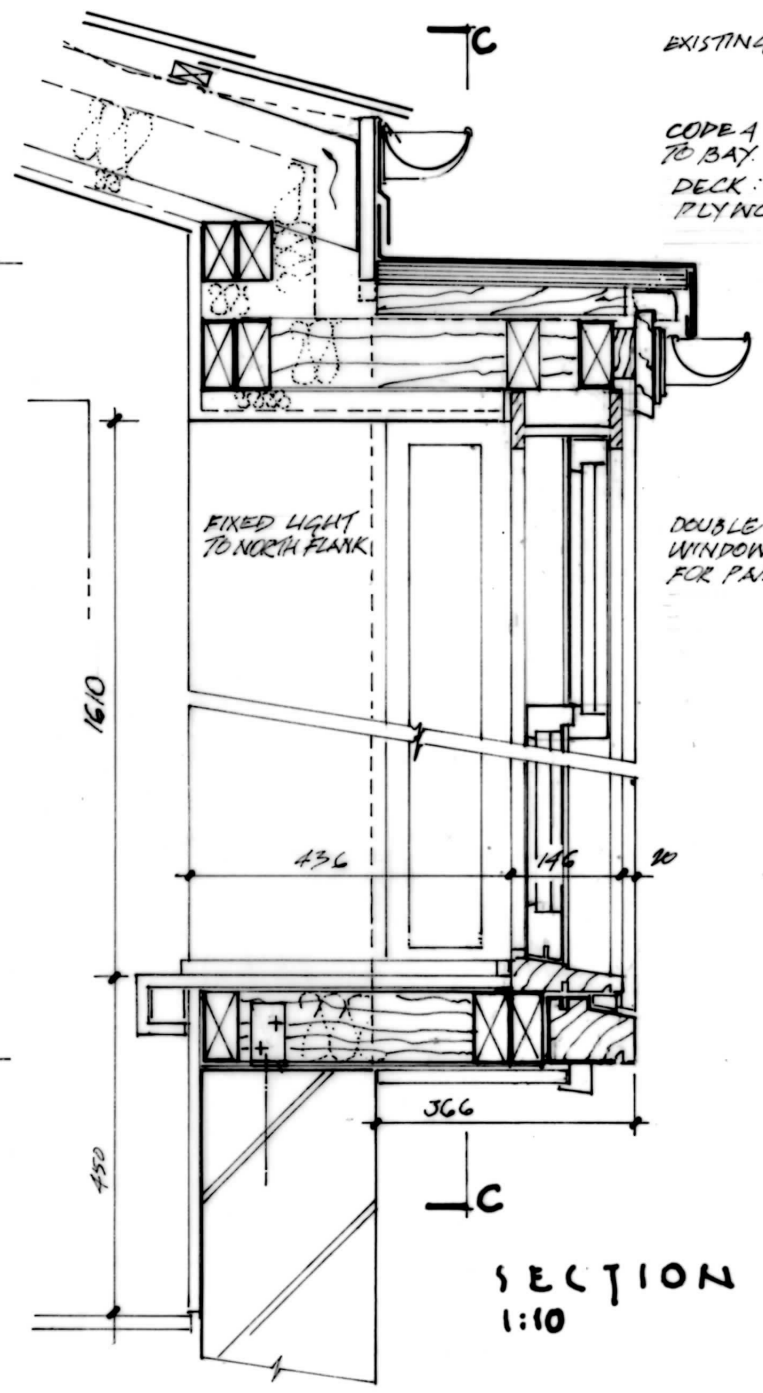


SECTION C-C 1:10

115 REDUCED STRUCT. OP'G 1460



SECTION B-B
1:10



SECTION A-A
1:10

REVISION 'A': GENERALLY REVISED FOR SIDELIGHT
IN NORTH FLANK - ON NEW NEGATIVE 29.10.2018

15 ROCHESTER ROAD LONDON NW1 9JH

BAY WINDOW W9 CONSTRUCTION DETAILS

Scale: 1:10 at A3 April 2018

Christopher M Phillips Architect christo.phillips@btconnect.com
31 Grafton Road London NW5 3DX ☎ 020 7485 3578 07743 498738

DRAWING NO. 822.21 REVISION: A

EX'G HO'P R.W.P.
NEW CONNECTION
FOR ROOF DRAINAGE

CLADDING: 15MM T&G
ACCOYA. - FOR PAINTING.

CARCASING: GENERALLY
75 X 45 TREATED SOFTWOOD.

FIXED LIGHT
FRAME.

WINDOW SEAT: 20MM
HARDWOOD; SPECIES TO BE AGREED

WINDOW SEAT
T&G HARDWOOD.

ON FACE 1940

EXISTING FASCIA RETAINED.

COPE A LEAD ROOFING
TO BAY.
DECK: 19MM WISA SPRUCE
PLYWOOD. FALL 1°.

DOUBLE HUNG SASH
WINDOWS: HARDWOOD
FOR PAINTING.

FIXED LIGHT
TO NORTH FLANK

1610

450

436

146

90

366

366

230

1718