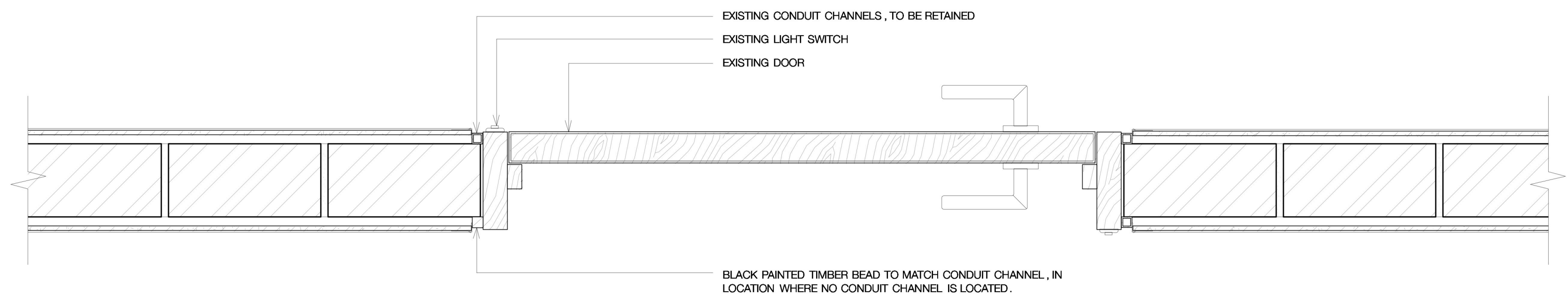


02 TYPICAL SECTION DETAIL OF BRICK WALL LINING
SCALE 1:5



01 TYPICAL PLAN DETAIL OF BRICK WALL LINING
SCALE 1:5

Promat

Promat SUPALUX® Multiple applications

The qualities and versatility of Promat SUPALUX® make it the first choice for passive fire protection applications in all types of building.

It is equally suitable for specification in both new build and refurbishment projects.

The right solution across all sectors

Promat SUPALUX® assured performance and quality is regularly specified for:

Non-residential

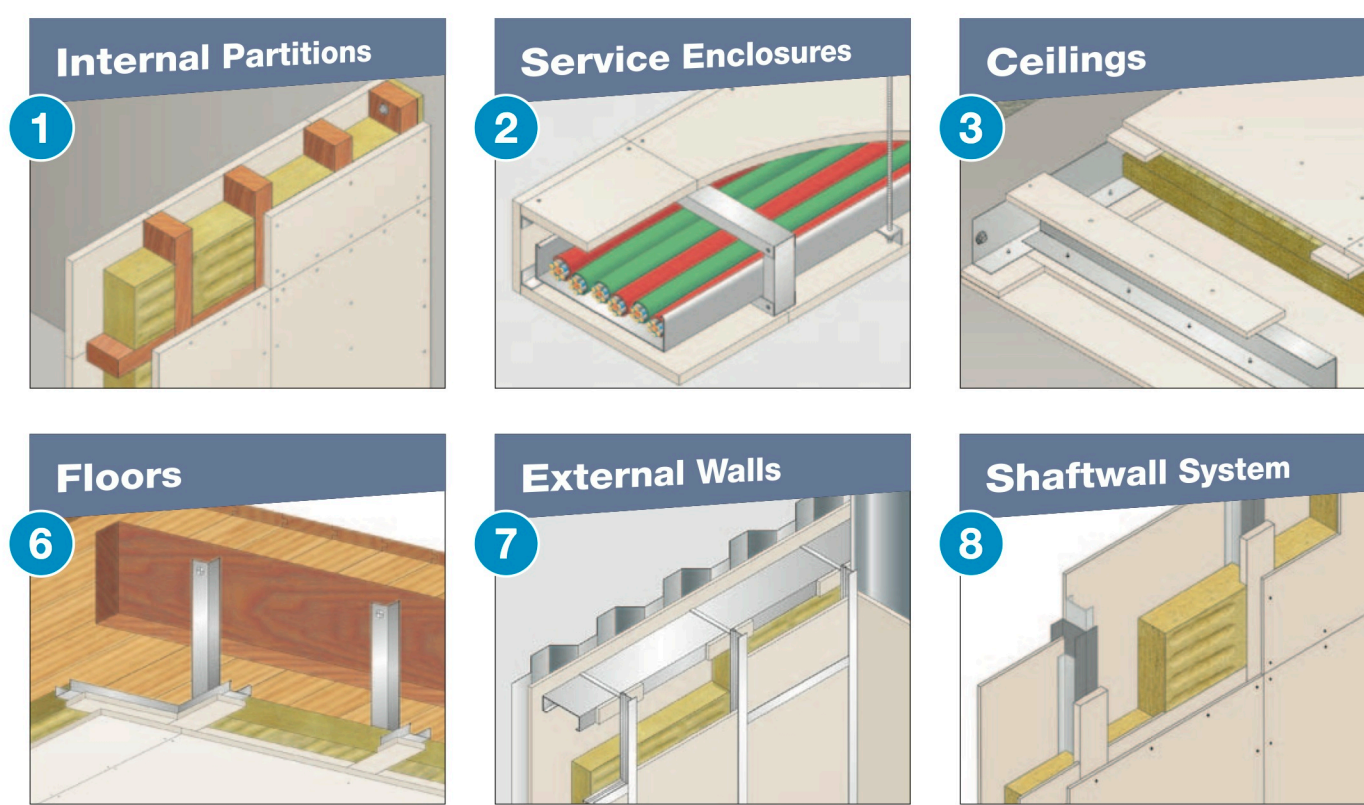
- Offices
- Industrial units
- Warehousing
- Retail outlets
- Schools and colleges
- Hospitals
- Rail and underground network facilities
- Government buildings
- Public buildings

Residential

- Social housing
- Private housing
- Halls of residence
- Care homes

Multi-purpose versatility

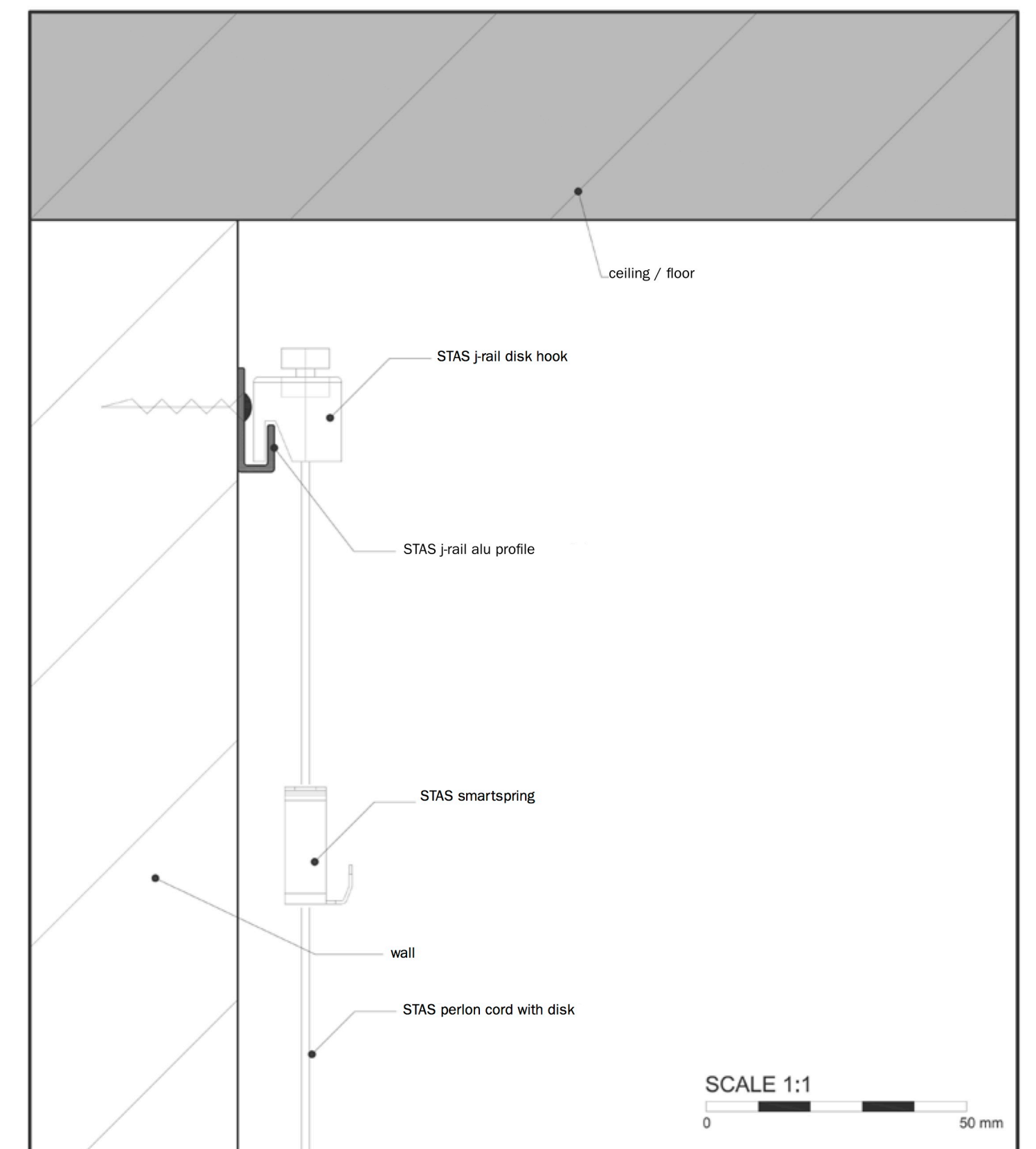
SUPALUX® can be relied on to provide fire protection for a wide range of common application needs within buildings.



4 Dedicated Promat SUPALUX® Technical Helpline 01344 381 378

03 WALL LINING MATERIAL - 6MM PROMAT SUPERLUX
NOT TO SCALE

STAS j-rail picture hanging systems



features:
- aluminium rail
- dimensions 7 x 20 mm
- capable of carrying loads up to 25 kg per meter

options:
- rods are available in various lengths, RAL 9016 (white) or natural aluminium
- other colours and finishing on request



STAS supplies multifunctional picture hanging systems and accessories for every wall and ceiling.

For more information, visit our website www.stas.nl or call +31 (0)40 292 48 48

04 WALL HANGING SYSTEM
NOT TO SCALE



LIGHT SWITCHES AND ASSOCIATED CABLING TO BE RETAINED
CONDUITS TO NEWLY INSTALLED THERMOSATS TO BE CONCEALED

ORIGINAL LIGHT SWITCH CONDUITS

05 DOOR ARCHITRAVE AND CONDUIT
NOT TO SCALE

STATUS: PLANNING

SCALE: 1:5 at A1

DATE: DECEMBER 2018

DRAWING NO: 1806-SK02

TITLE: WALL LINING DETAIL

PROJECT: 6 BACON'S LANE, LONDON, N6 6BL