

notes:
Do not scale from this drawing
All dimensions to be checked on site and any discrepancies reported to the Architect/Contract Administrator before proceeding with the works on site, or off-site fabrication



IMAGE - AS-BUILT BIN AND CYCLE STORAGE AREA



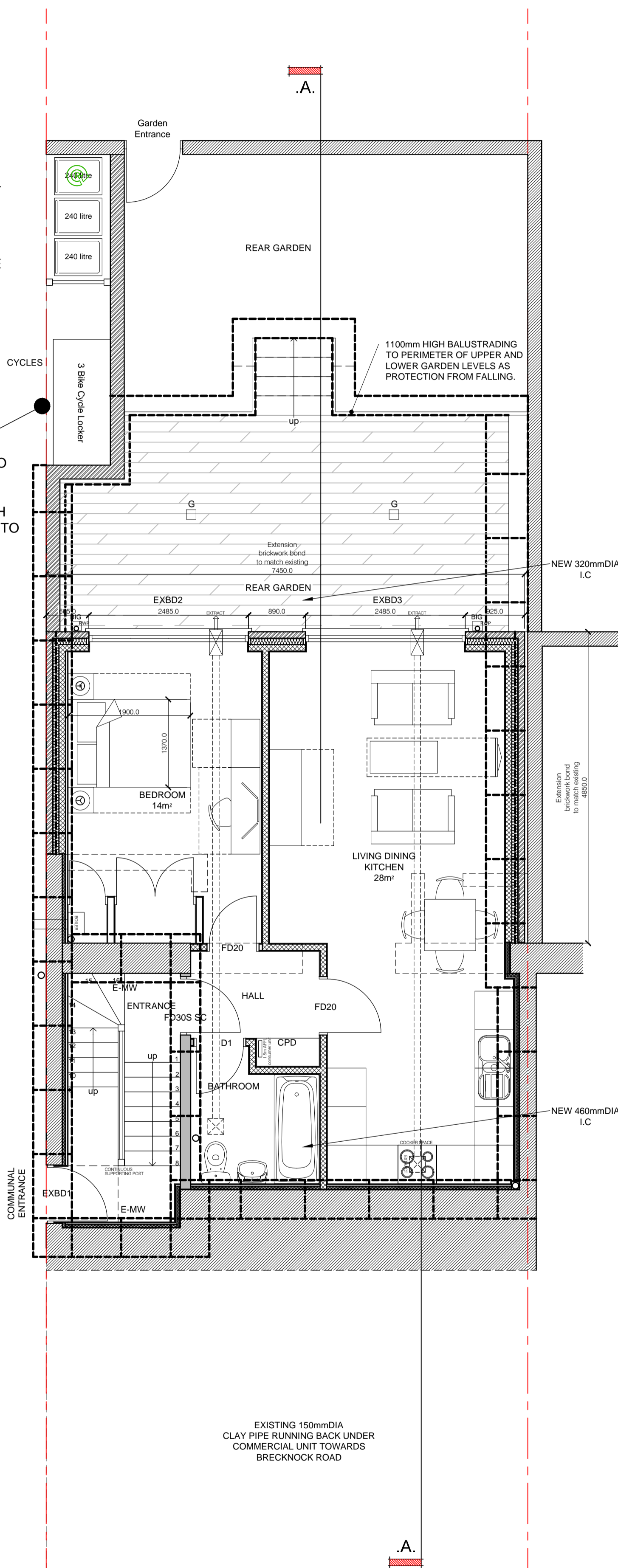
IMAGE - AS-BUILT BIN AND CYCLE STORAGE AREA



TRIMETALS BICYCLE STORAGE STORES UPTO 3 ADULT BIKES H133XW196XD90cm

POSITION OF 3NO 240L WHEELIE BINS 1070Wx580Dx740H TO SERVE 4xFLATS AS DETAILED IN THE COUNCIL'S WASTE GUIDANCE NOTES.

POSITION OF CYCLE STORAGE FOR 3 NO CYCLES TRIMETALS BICYCLE STORAGE - STORES UPTO 3 ADULT BIKES H133XW196XD90cm COMMUNAL CYCLE STORAGE OUTSIDE THE HOME TO BE SECURE, SHELTERED AND ADEQUATELY LIT, WITH CONVENIENT ACCESS TO THE STREET.



LOWER GROUND FLOOR PLAN 1:50

For Approval	
A	CYCLE STORAGE ARRANGEMENTS CHANGED 06.12.18 IRMB
revision	description date
GENESIS ARCHITECTS LTD 7 St Margarets Road, Stanstead Abbotts Ware Hertfordshire SG12 8EP T: 01920 877998 F: 01920 877998 E: genesis.architects@btconnect.com W: www.genesisarchitects.ltd.uk	
client	Brecknock Properties Ltd
project	RESIDENTIAL DEVELOPMENT AT 43 BRECKNOCK ROAD LONDON N7 0BT
title	PROPOSED LOWER GROUND FLOOR PLAN - CYCLES STORAGE
date	OCT 18 scale AS SHOWN drawn IRMB
drawing no	revision
GAL 262 (WD) 041 A	