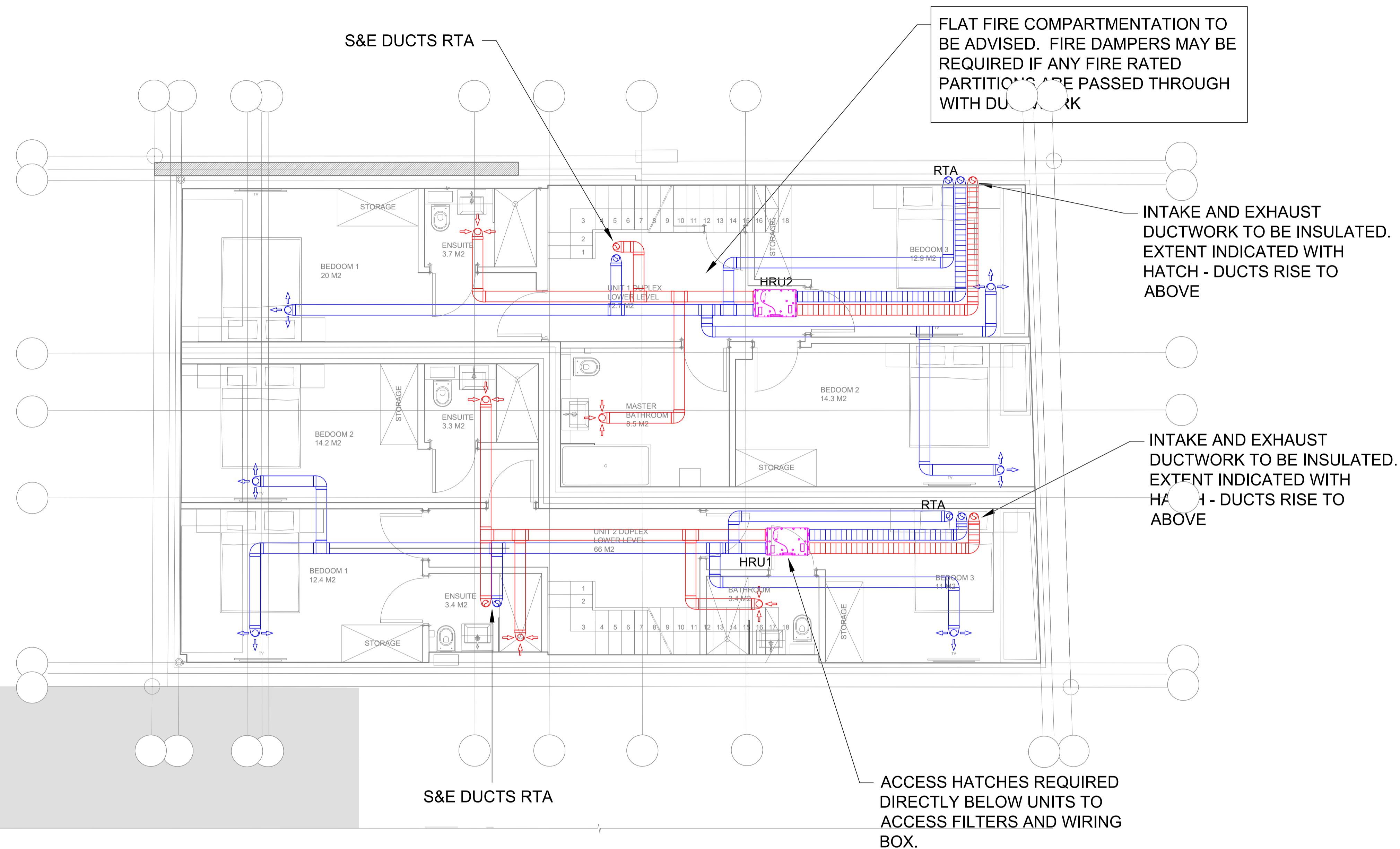
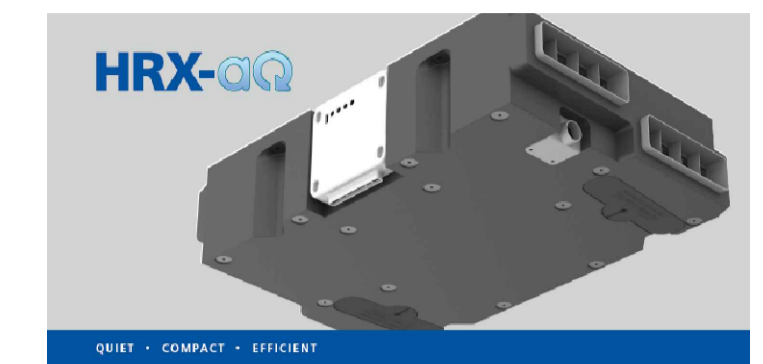


POSSIBLE VENTILATION UNIT
SILAVENT AQH200-B
SUPPLIED WITH BLUE BRAIN
CONTROLLER

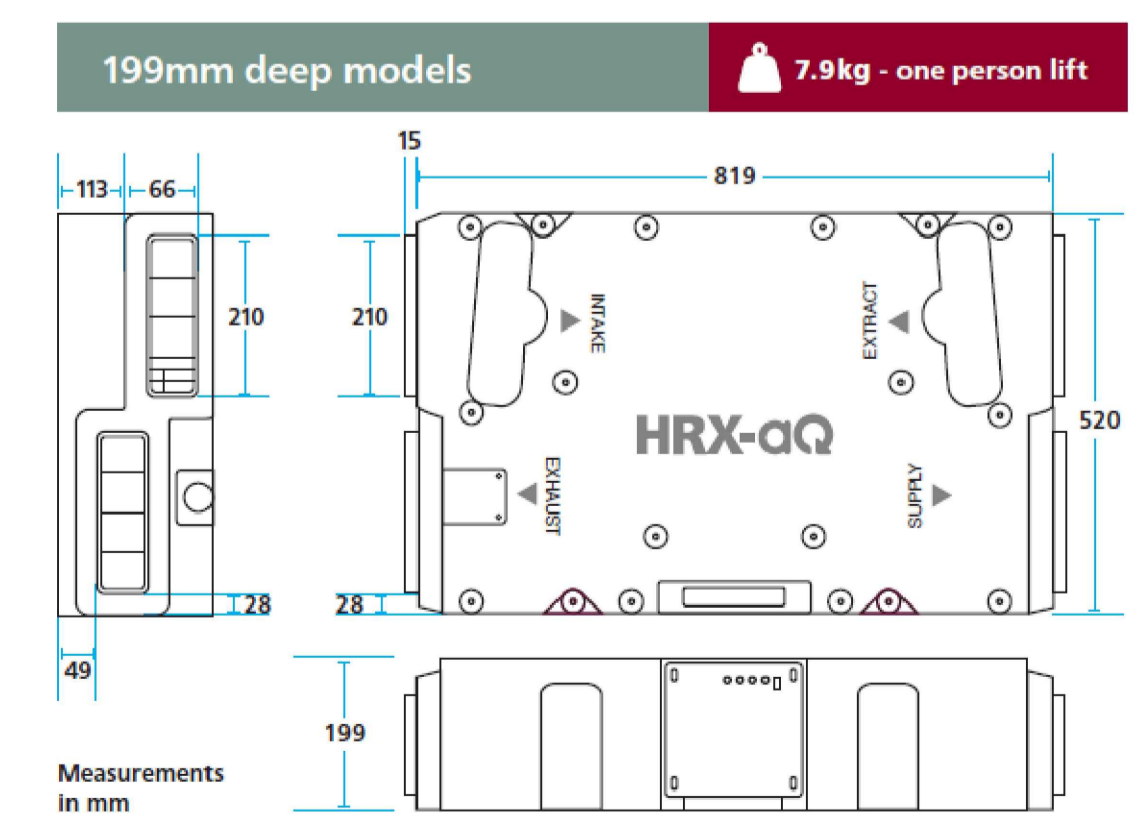
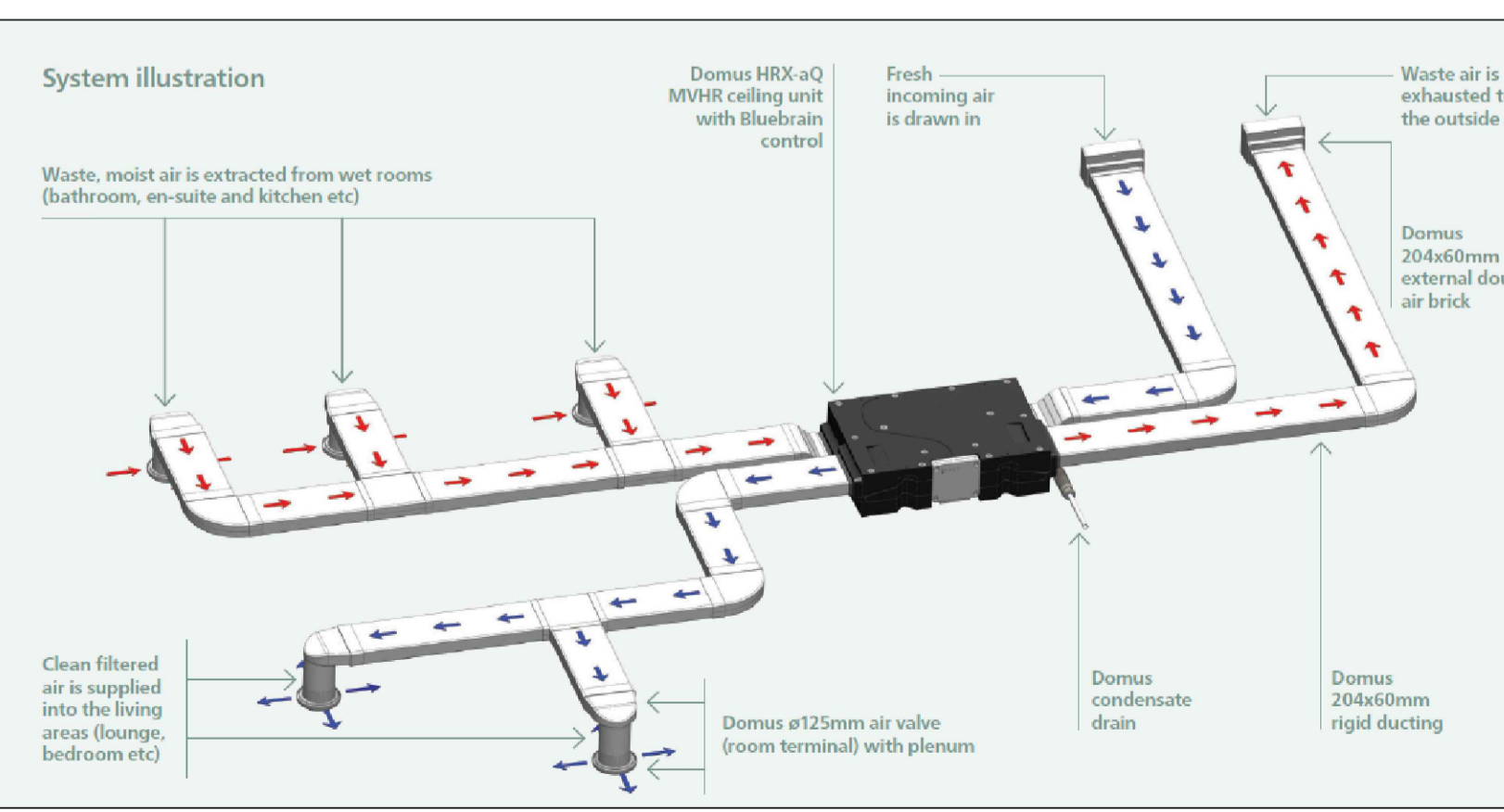


- D ARCHITECTS LAYOUT UPDATED 17.09.18
EXTRACT ADDED IN UNIT 2 BED 2 ENSUITE
- C ARCHITECTS LAYOUT UPDATED 12.07.18
SYSTEM ALTERED TO SUIT
- B ARCHITECTS LAYOUT UPDATED 01.05.18
- A ARCHITECTS LAYOUT UPDATED 16.04.18
VENT SYSTEMS ALTERED TO SUIT

REVISION

A W Powis Ltd

The Dutch Barn
Dunnimere Farm
Portway Lane
Harlaston
B79 9LA
Tel No. 07976 709828
Fax No. 01827 382944

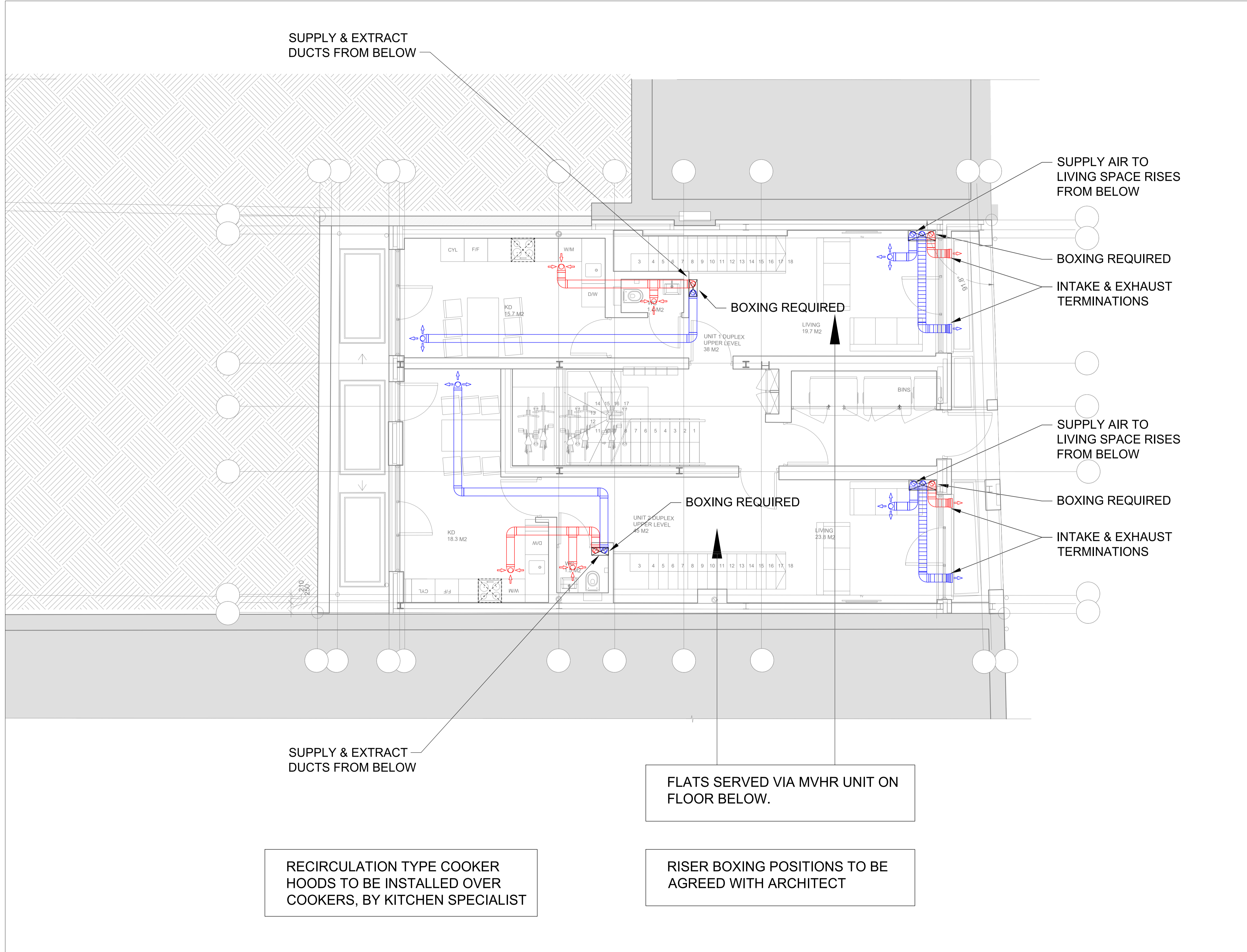


VENTILATION STRATEGY:

EACH BASEMENT FLAT WILL BE PROVIDED WITH A WHOLEHOUSE SUPPLY AND EXTRACT VENTILATION SYSTEM. THE VENTILATION UNIT WILL BE INSTALLED ABOVE THE HALL CEILING. FLAT PACK DUCTWORK WILL BE INSTALLED AROUND THE FLAT IN 204 x 60mm PLASTIC DUCTING. EACH WET ROOM OR KITCHEN WILL BE PROVIDED WITH A 125Ømm AIR VALVE IN THE CEILING (EXTRACT VENT POINT). SUPPLY AIR VALVES 125Ø WILL BE INSTALLED IN THE LIVING ROOM AND EACH BEDROOM. FINAL TERMINATION POSITIONS AND VENTILATION TERMINAL TO BE AGREED WITH THE ARCHITECT

THE UNIT WILL OPERATE ON TRICKLE SPEED AND BOOST WHEN LIGHT SWITCHES ARE TURNED ON IN BATHROOMS OR MANUAL SWITCH IS ACTIVATED IN THE KITCHEN

Issue Status	FOR APPROVAL		
Client	JAMES TAYLOR CONSTRUCTION		
Project	KINGS MEWS		
Drawing Title	BASEMENT FLOOR VENTILATION SERVICES		
Scale	Date	By	
1:50	FEB' 2018	PW	
Job	Dwg Number	Rev	
2924	M/-1/200	D	A1



REVISION	DESCRIPTION	DATE
D	ARCHITECTS LAYOUT UPDATED PLUS KITCHEN LAYOUTS	17.09.18
C	ARCHITECTS LAYOUT UPDATED ADDITIONAL RISERS FROM BELOW	12.07.18
B	ARCHITECTS LAYOUT UPDATED	01.05.18
A	ARCHITECTS LAYOUT UPDATED VENT SYSTEMS ALTERED TO SUIT	16.04.18

A W Powis Ltd

The Dutch Barn
 Dunningmere Farm
 Portway Lane
 Harlaston
 B79 9LA
 Tel No. 07976 709828
 Fax No. 01827 382944

Issue Status
 FOR APPROVAL

Client
 JAMES TAYLOR CONSTRUCTION

Project
 KINGS MEWS

Drawing Title
 GROUND FLOOR VENTILATION SERVICES

Scale	Date	By	
1:50	JAN' 2018	PW	
Job	Dwg Number	Rev	
2924	M/0/200	D	A1

EXACT TERMINATION
POSITION TO BE AGREED

EXACT TERMINATION
POSITION TO BE AGREED

EXACT TERMINATION
POSITION TO BE AGREED

EXACT TERMINATION
POSITION TO BE AGREED

RECIRCULATION TYPE COOKER
HOODS TO BE INSTALLED OVER
COOKERS, BY KITCHEN SPECIALIST

VENTILATION STRATEGY:

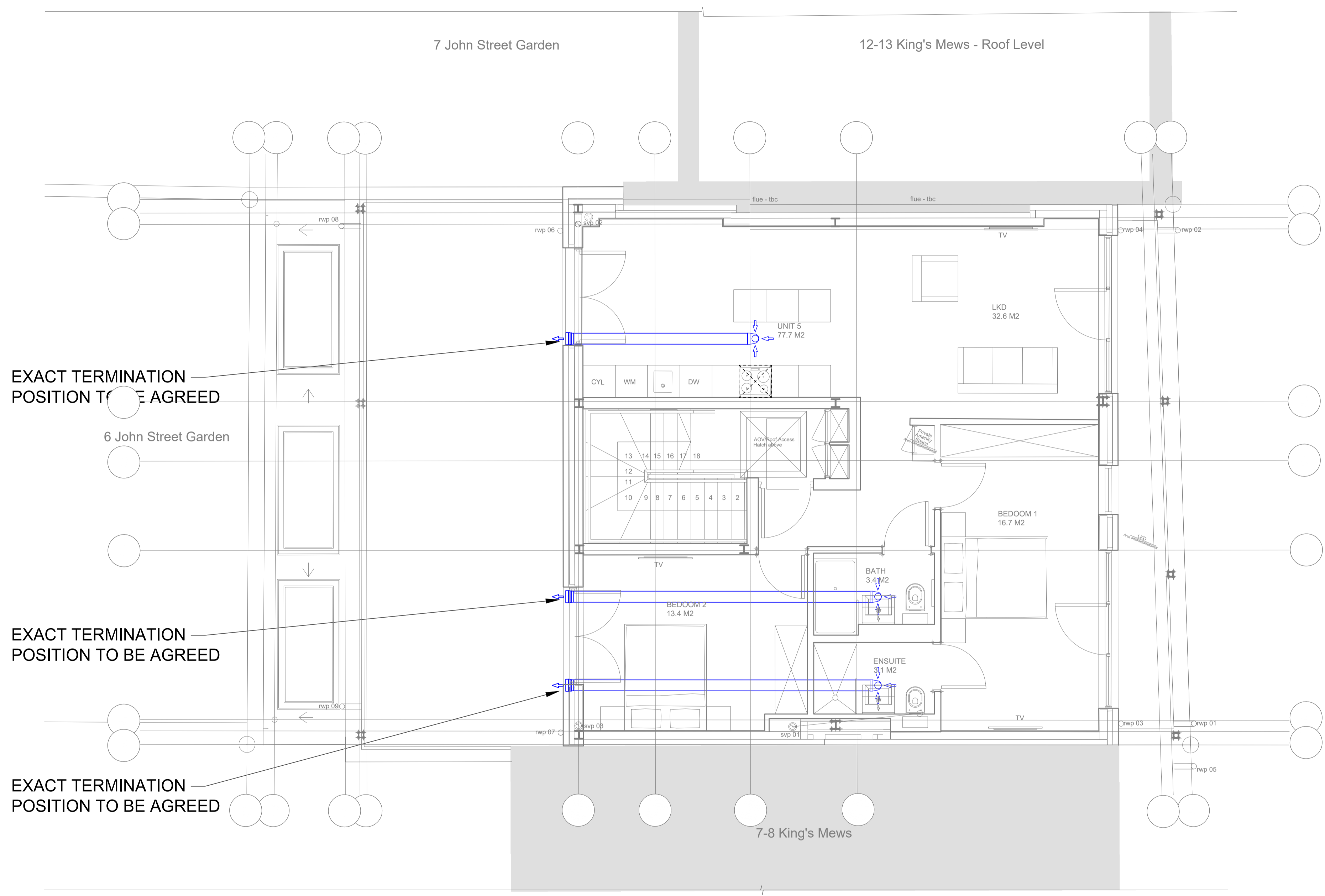
EACH FLAT WILL BE PROVIDED CONTINUOUS EXTRACT FANS. FANS WILL BE INSTALLED SURFACE MOUNTED ON THE CEILING.
FLAT PACK DUCTWORK WILL BE INSTALLED AROUND THE FLAT IN 204 x 60mm PLASTIC DUCTING. FINAL TERMINATION POSITIONS AND VENTILATION TERMINAL TO BE AGREED WITH THE ARCHITECT

REVISION		
C	ARCHITECTS LAYOUT UPDATED PLUS KITCHEN LAYOUTS	17.09.18
B	ARCHITECTS LAYOUT UPDATED FANS CHANGED TO SEPERATE CONTINUOUS EXTRACT FANS	12.07.18
A	ARCHITECTS LAYOUT UPDATED VENT SYSTEMS ALTERED TO SUIT	01.05.18

A W Powis Ltd

The Dutch Barn
Dunnimere Farm
Portway Lane
Harlaston
B79 9LA
Tel No. 07976 709828
Fax No. 01827 382944

Issue Status	FOR APPROVAL		
Client	JAMES TAYLOR CONSTRUCTION		
Project	KINGS MEWS		
Drawing Title	FIRST FLOOR VENTILATION SERVICES		
Scale	Date	By	
1:50	JAN' 2018	PW	
Job	Dwg Number	Rev	
2924	M/1/200	C	A1



EXACT TERMINATION POSITION TO BE AGREED

EXACT TERMINATION POSITION TO BE AGREED

EXACT TERMINATION POSITION TO BE AGREED

RECIRCULATION TYPE COOKER HOODS TO BE INSTALLED OVER COOKERS, BY KITCHEN SPECIALIST

VENTILATION STRATEGY:
 EACH FLAT WILL BE PROVIDED CONTINUOUS EXTRACT FANS. FANS WILL BE INSTALLED SURFACE MOUNTED ON THE CEILING.
 FLAT PACK DUCTWORK WILL BE INSTALLED AROUND THE FLAT IN 204 x 60mm PLASTIC DUCTING. FINAL TERMINATION POSITIONS AND VENTILATION TERMINAL TO BE AGREED WITH THE ARCHITECT

REVISION		
C	ARCHITECTS LAYOUT UPDATED PLUS KITCHEN LAYOUTS	17.09.18
B	ARCHITECTS LAYOUT UPDATED FANS CHANGED TO SEPERATE CONTINUOUS EXTRACT FANS	12.07.18
A	ARCHITECTS LAYOUT UPDATED VENT SYSTEMS ALTERED TO SUIT	01.05.18

A W Powis Ltd
 The Dutch Barn
 Dunningere Farm
 Portway Lane
 Harlaston
 B79 9LA
 Tel No. 07976 709828
 Fax No. 01827 382944

Issue Status			FOR APPROVAL
Client			JAMES TAYLOR CONSTRUCTION
Project			KINGS MEWS
Drawing Title			
SECOND FLOOR VENTILATION SERVICES			
Scale	Date	By	
1:50	JAN' 2018	PW	
Job	Dwg Number	Rev	
2924	M/2/200	C	A1