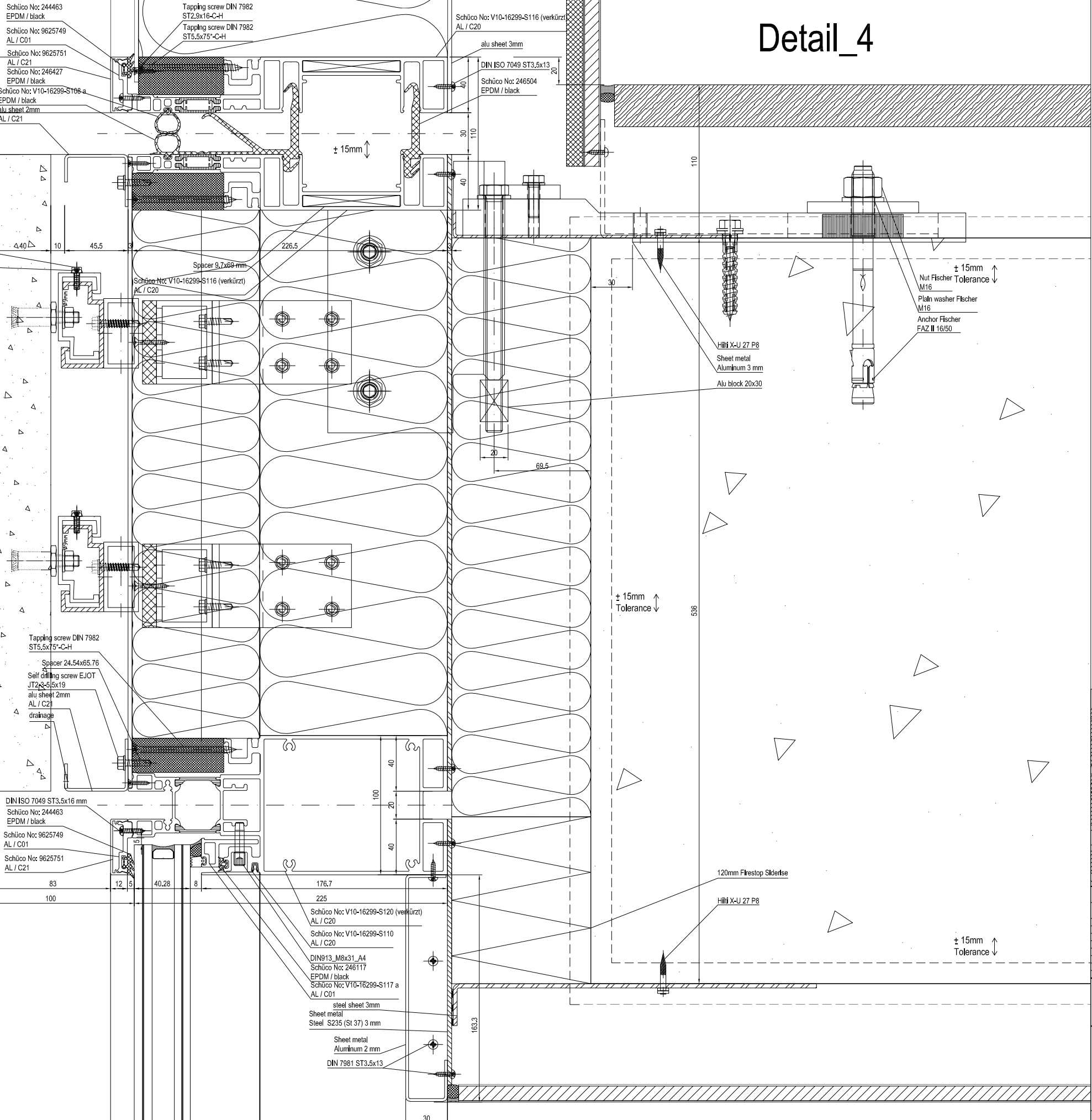


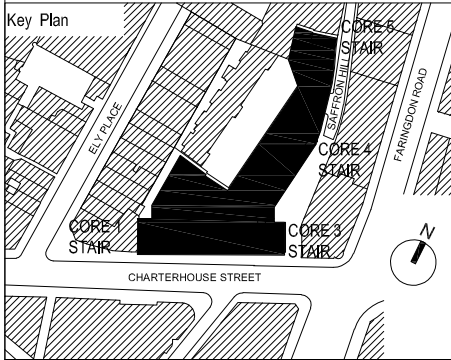
Third Floor  
+ 23.755

# Detail\_4

Cheese head screw DIN 912  
M4x12  
DIN 7981 ST4.2x13  
x2



**EWS 07 - SECTION DETAIL, STONE AND GLASS JUNCTION, THIRD FLOOR, SAFFRON HILL**



APPROVAL

DATE:

Rev	Revisions	Date	Drawn	Checked
C7				
C6				
C5				
C4				
C3				
C2				
C1				

**Schneider GB Ltd**  
Downstream Offices  
Butlers Wharf West  
38 Shad Thames  
London, SE1 2YD  
t +44 (0) 20 7401 6383  
www.schneider-facades.co.uk

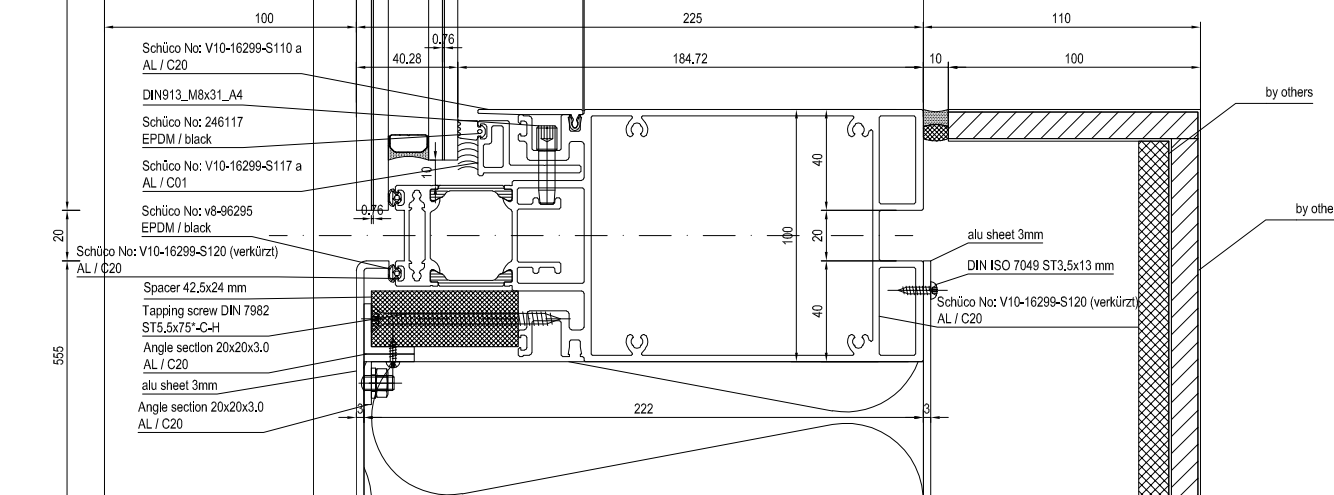
**WINDOWS  
FACADES  
CURTAIN WALLING**

JOB NO.: K30152  
CONTRACT: 17 Charterhouse Street  
ARCHITECTS: MCM Architecture Limited  
DRAWING TITLE: Principal detail  
Vertical section  
slab with bracket  
stone panel

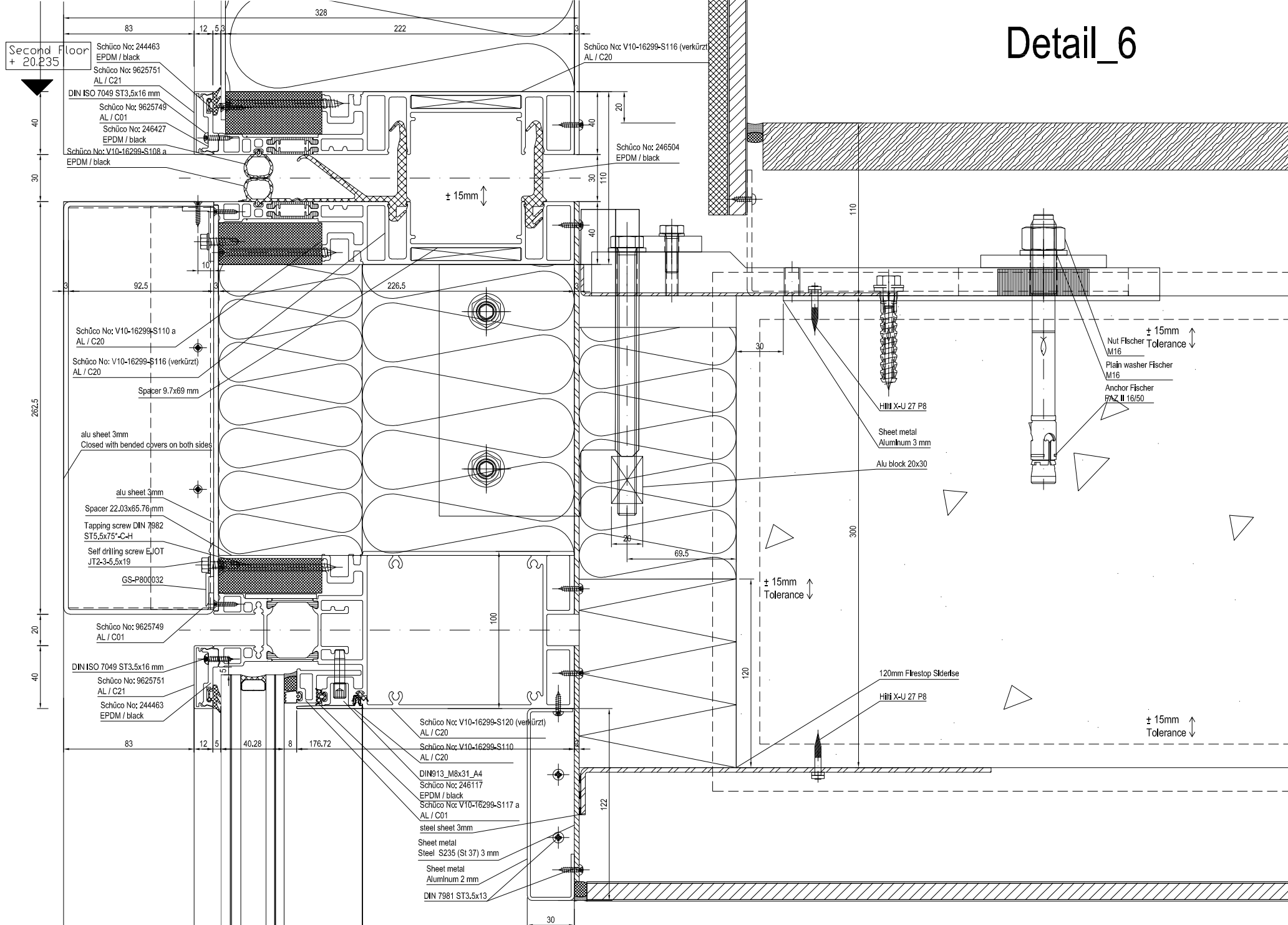
Scale: A3:1,3  
A0:1,1  
Date: 18-JUN-18  
Checked-by: F.Schurig  
Drawn by: M.Wieczary  
Revisions: 00

This drawing is our property. Each application, utilization or passing on to third persons is forbidden and will be pursued.

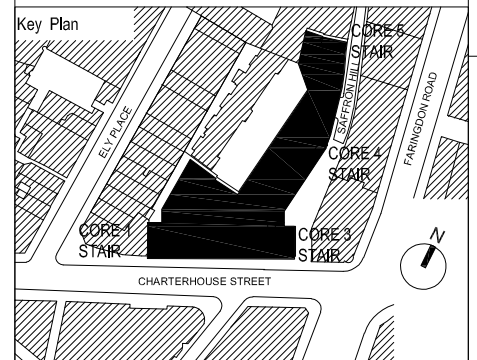
# Detail\_5



# Detail\_6



**EWS 07 - SECTION DETAIL, ALUMINIUM SPANDREL PANEL AND GLASS JUNCTION, TYPICAL FLOOR, SAFFRON HILL**



APPROVAL

DATE:

Rev	Revisions	Date	Drawn	Checked
C7				
C6				
C5				
C4				
C3				
C2				
C1				

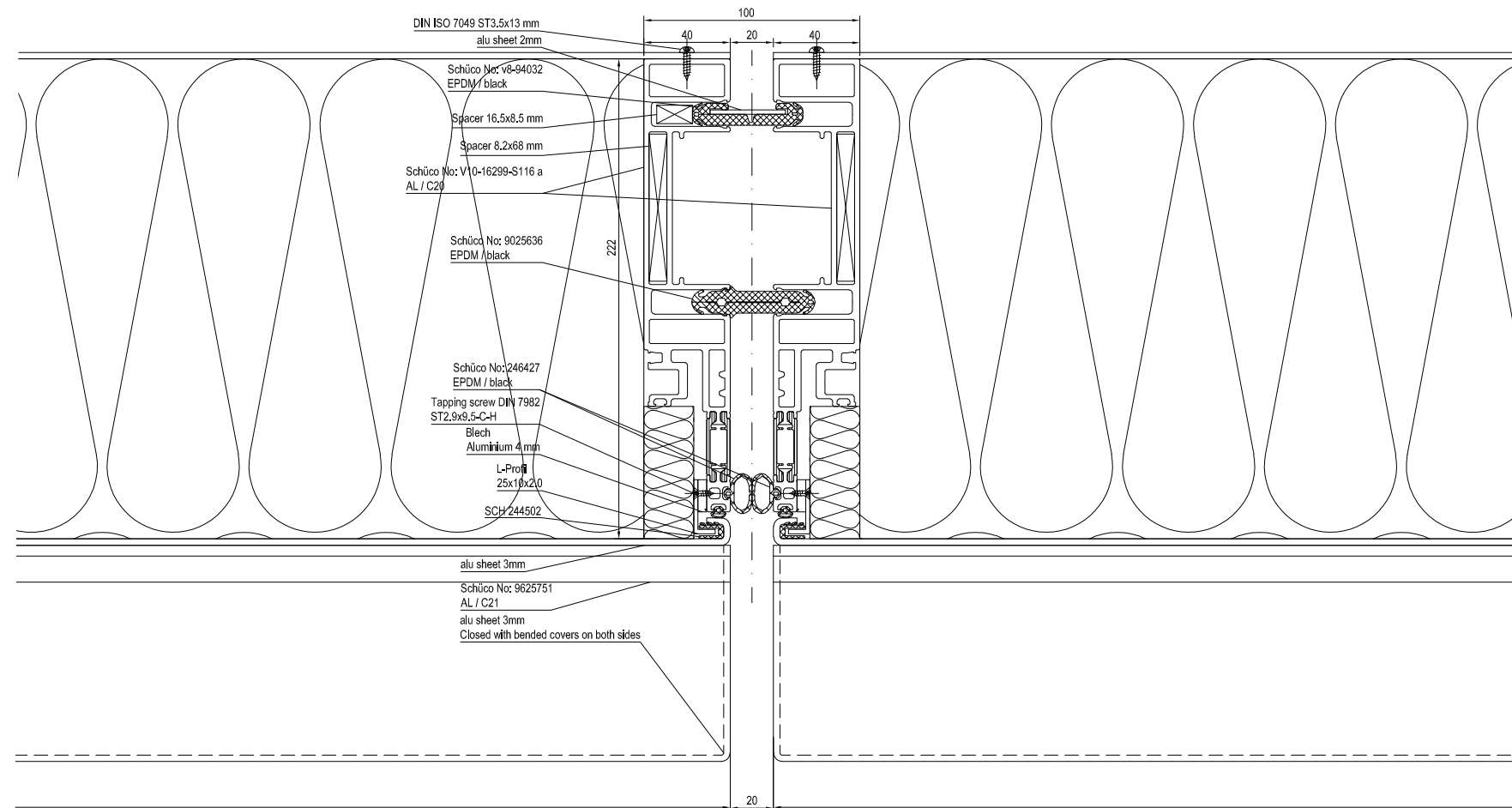
**Schneider GB Ltd**  
Downstream Offices  
38 Shad Thames  
London, SE1 2YD  
t +44 (0) 20 7401 6383  
www.schneider-facades.co.uk

**WINDOWS**  
**FAÇADES**  
**CURTAIN WALLING**

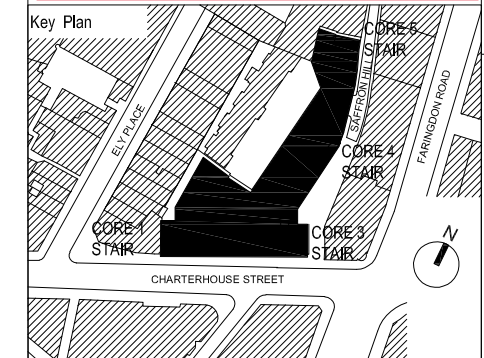
JOB NO.: K30152  
CONTRACT: 17 Charterhouse Street  
ARCHITECTS: MCM architecture Limited  
DRAWING TITLE: Principal details  
Vertical section  
slab with bracket and parapet panel  
Checked-by: F.Schurig  
Drawn by: M.Wieczary  
Revision: 00

This drawing is our property. Each application, utilization or passing on to third persons is forbidden and will be pursued.

# Detail\_7



**EWS 07 - PLAN DETAIL, DETAIL OF ALUMINIUM PANEL JUNCTION, TYPICAL FLOOR, SAFFRON HILL**



**APPROVAL**

DATE:

C7			
C6			
C5			
C4			
C3			
C2			
C1			

<p><b>Schneider GB Ltd</b> Downstream Offices Butlers Wharf West 38 Shad Thames London, SE1 2YD t +44 (0) 20 7401 6383 www.schneider-facades.co.uk</p>	<p><b>WINDOWS</b> <b>FACADES</b> <b>CURTAIN WALLING</b></p>
	<p>JOB NO.: K30152 CONTRACT: 17 Charterhouse Street ARCHITECTS: MCM Architecture Limited DRAWING TITLE: Principal details horizontal section parapet panel</p>
<p>Scale: A3:1,3 A0:1:1 Date: 18-JUN-18 Checked-by: F.Schurig Drawn by: M.Wieczary Revisions: 00</p>	<p>Drawing-Nr.: P2020-SGB-PD-07-D-XX-005 Copying and distribution to third parties prohibited. Measurements to be re-checked.</p>

This drawing is our property. Each duplication, utilization or passing on to third persons is forbidden and will be pursued.

Schüco-No. 244463  
EPDM / black / SD011  
Schüco No: V8-9634323  
AL02 / C04 / SP18  
Schüco No: V8-9634322  
AL02 / C01 / SP17  
ISO 7049 TX ST2.9x13  
Schüco No: 9033021  
EPDM / black / SD5  
Schüco No: V8-9634376  
EPDM / black / SD1

+21.150 Sheet metal 2 mm  
+21.135  
Angle section SPAETER 30x25x3.0

DIN EN ISO 4017 M6x12  
FA04  
Drillinox\_6\_5,5x32\_A4  
FA15  
Fischer FZP II  
13x26 M8/50/12 A4  
Tapping screw  
ST3.5x38\* mm  
Z-section  
40x60x40x4  
Self drilling screw EJOT  
JT3-6-5.5x50-E16/2  
Spacer 80x24.1

F

Spacer 10x69 mm  
D12/TK1  
Schüco No: 203100  
PVC-U / red / SZ01  
secial bold\_DIN913\_M8x31\_A4  
Schüco No: V8-9634313  
AL02 / C04 / SP13  
Schüco No: V8-9634316  
AL02 / C02 / SP12  
Schüco No:16299-S128  
EPDM / black / SD7

Schüco No: 9623674  
EPDM / black / SD2  
Schüco No: V8-9634295  
AL02 / i.C04 o.C01 / SP5  
SCH336990  
AL02  
Rectangular tube SPAETER  
80x40x2.5  
Angle section SPAETER  
50x50x3.0

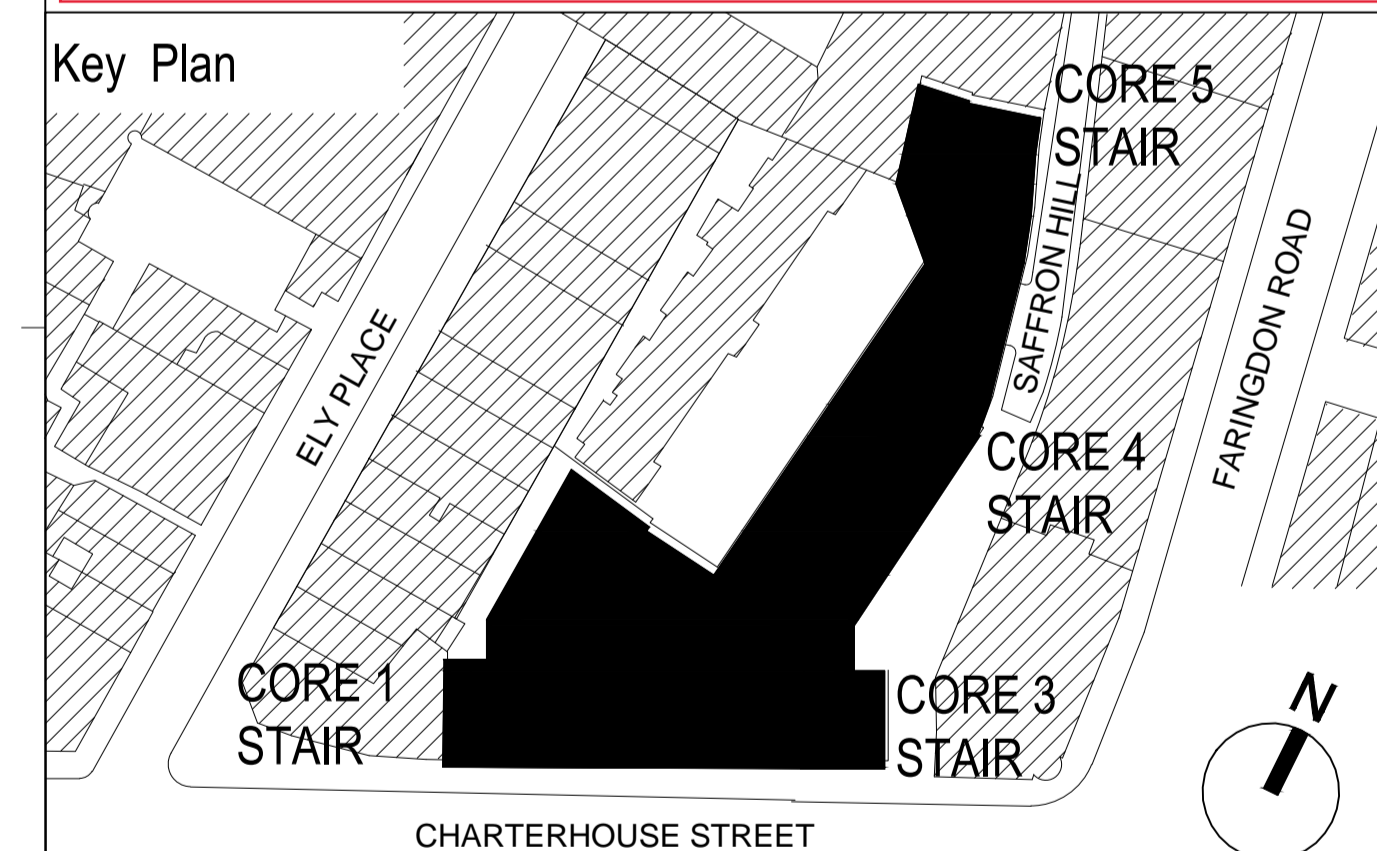
Insulation 50 mm  
Insulation 160 mm

+20.524

+20.127

ISO 4032 M12  
FA04  
Flat DIN EN 10058 60x5x60  
ST02 / C05 / PS3  
Ø40  
filled with FIS HB 150C  
Aluminium distance packing  
Jordahl JC-M10x80-fv  
C05  
Channel Jordahl  
JM W 40/22  
Flat DIN 59200 200x10 l=300mm  
ST03 / C02 / PS6

**EW5 07 - SECTION DETAIL, STONE  
CLADDING TO PAVILION ROOF,  
COURTYARD FACADES**



APPROVAL  
DATE:

Rev	Revisions	Date	Drawn	Checked
C7				
C6				
C5				
C4				
C3				
C2				
C1				

**SCHNEIDER**

**Schneider GB Ltd**  
Downstream Offices  
Butlers Wharf West  
38 Shad Thames  
London, SE1 2YD  
t +44 (0) 20 7401 6383  
www.schneider-facades.co.uk

**WINDOWS  
FACADES  
CURTAIN WALLING**

JOB NO.: K30152  
CONTRACT: 17 Charterhouse Street

ARCHITECTS: MCM Architecture Limited  
DRAWING TITLE: Mainwork Drawings EW507  
Vertical Detail  
parapet panel

Date: 06-SEP-18  
Checked-by: M. Martin  
Drawn by: E. Perez  
Revision: 00

This drawing is our property. Each duplication, utilization or passing on to third persons is forbidden and will be pursued.

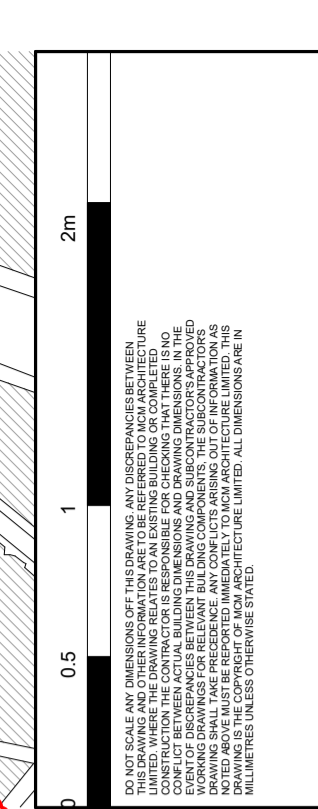
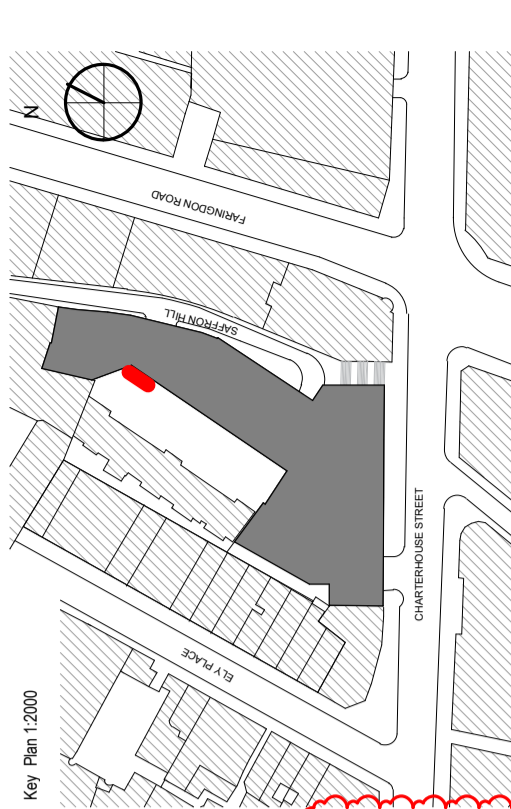
**SYMBOLS KEY**

- BY STRUCTURAL ENGINEER
- WATERPROOFING LAYER
- VAPOUR BARRIER
- BOUNDARY LINE

NOTES:  
ALL CONCRETE UPSTANDS TO BE BY STRUCTURAL ENGINEER.  
READ IN CONJUNCTION WITH A11 DWSG DATE: 17/04/2017 TO DWB9

**EWS 08 - CLADDING TO STAIR 4, COURTYARD**

1	Portland Based Stone - AKTH51
2	Portland Bowers React Stone - AKTH51
3	Ceramic Stone - AKTH52
4	Insulated Render - AKT/MZ1
5	Anodised aluminium unitised curtain walling mullion/transom - AKT/A and H11
6	Anodised aluminium stick system curtain walling mullion - AKT/A and H11
7	Sealed double glazed laminated vision glass unit with Low-E glass and AKTL40
8	Sealed double glazed laminated vision glass unit with Low-E glass and translucent stone veneer - AKTL40
9	Anodised aluminium vertical and horizontal fin sun shading - AKTZ11
10	Anodised aluminium framed glazed doors with low-E double glazed units - AKTZ11, L10, L20
11	MIG steel curtain walling mullion - AKT/H11
12	Polyester powder coated aluminium louvre panel - MCM/L19 and Z31
13	Anodised aluminium louvre panel - AKT/Z33
14	Carved steel glass balustrade - AKT/A. General requirements: 3.14.1
15	Specialist steel garage door with Portland stone facing - MCM/L20/06/1A
16	Specialist steel door with Portland stone facing - MCM/L20/06/1A
17	White pebble ballast - MCM/J31/13/05
18	European granite pavers - MCM/J31/13/1A
19	Raised access floor -
20	Concrete pavers to plant room enclosures - MCM/J31/13/10A
21	Insulated stone soffit panel - AKTH52
22	Thermal Insulation - AKT/Section 11.7
23	Light Steel Framing MCM/G13/124
24	Existing Portland Stone (re-named) MCM/C40/111
25	Plasterboard - MCM/K10
26	Steel plate - AKT/Z11, Z12 and Z20
27	Blockwork MCM/F10/350A
28	Gravel girth - AKTH51
29	Anodised aluminium - AKT/Z33
30	Entrance matting - MCM/W10/250
31	Ceramic print to privacy fin - AKTL40
32	Cementitious board - MCM/J31/13/10
33	Replacement window - AKTL10



NO.	REVISION	DATE	PURPOSE OF ISSUE
T3	03.10.17		SP
T2	05.03.18		SP
T1	16.02.18		DM
P3	22.01.18		SP
P2	15.12.17		SP
P1	09.10.17		SP

CLIENT	AA & DB
PROJECT	17 CHARTERHOUSE ST.
DRAWING	SAFFRON HILL COURTYARD STAIR EWS-08
SCALE	1:25 @ 1:50 @ 1:100 @
DRAWN	DM
CHECKED	SP
DRAWING NO.	P17-082 A-21-DET-21 T3

STATUS:  PRELIMINARY,  TENDER,  CONSTRUCTION,  AS BUILT

DATE: 03.10.17

PROJECT: 17 CHARTERHOUSE ST.

DRAWING: SAFFRON HILL COURTYARD STAIR EWS-08

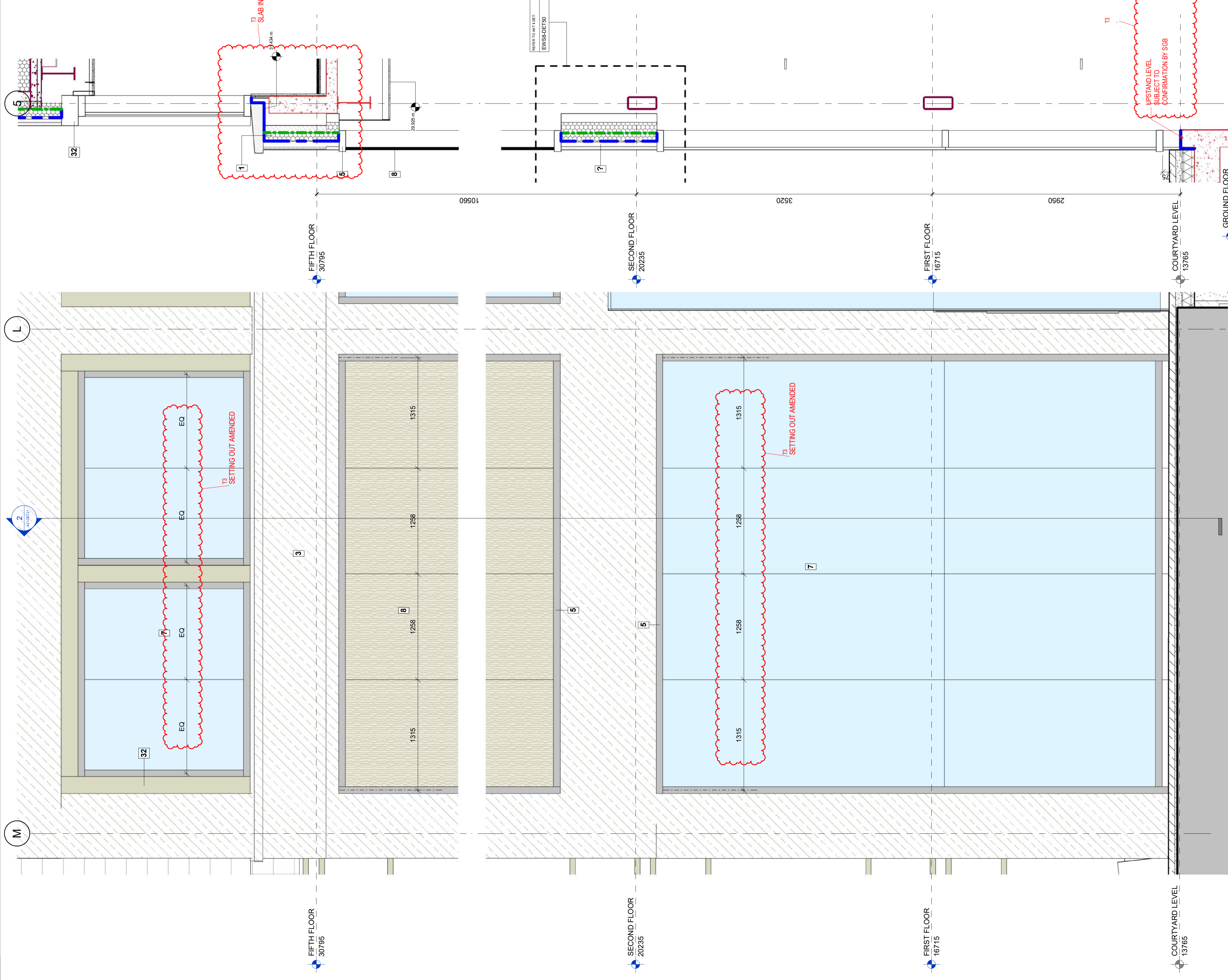
SCALE: 1:25 @ 1:50 @ 1:100 @

DRAWN: DM

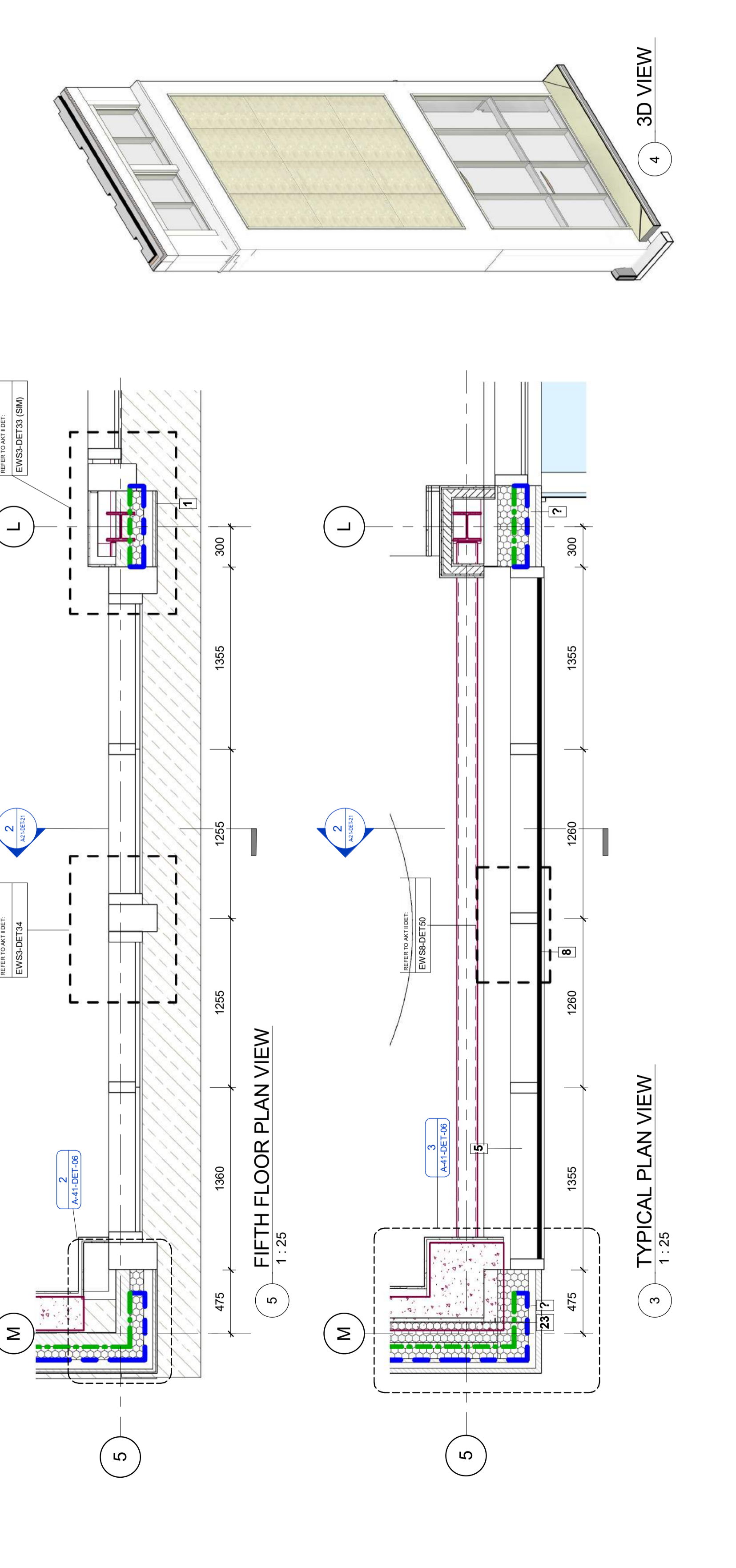
CHECKED: SP

DRAWING NO.: P17-082 A-21-DET-21 T3

**MCM**  
MCM Architectural Limited  
71 Noton Street, London, SE1 6LR  
T: 020 7902 0900  
www.mcm.co.uk



SECTION VIEW  
1:25



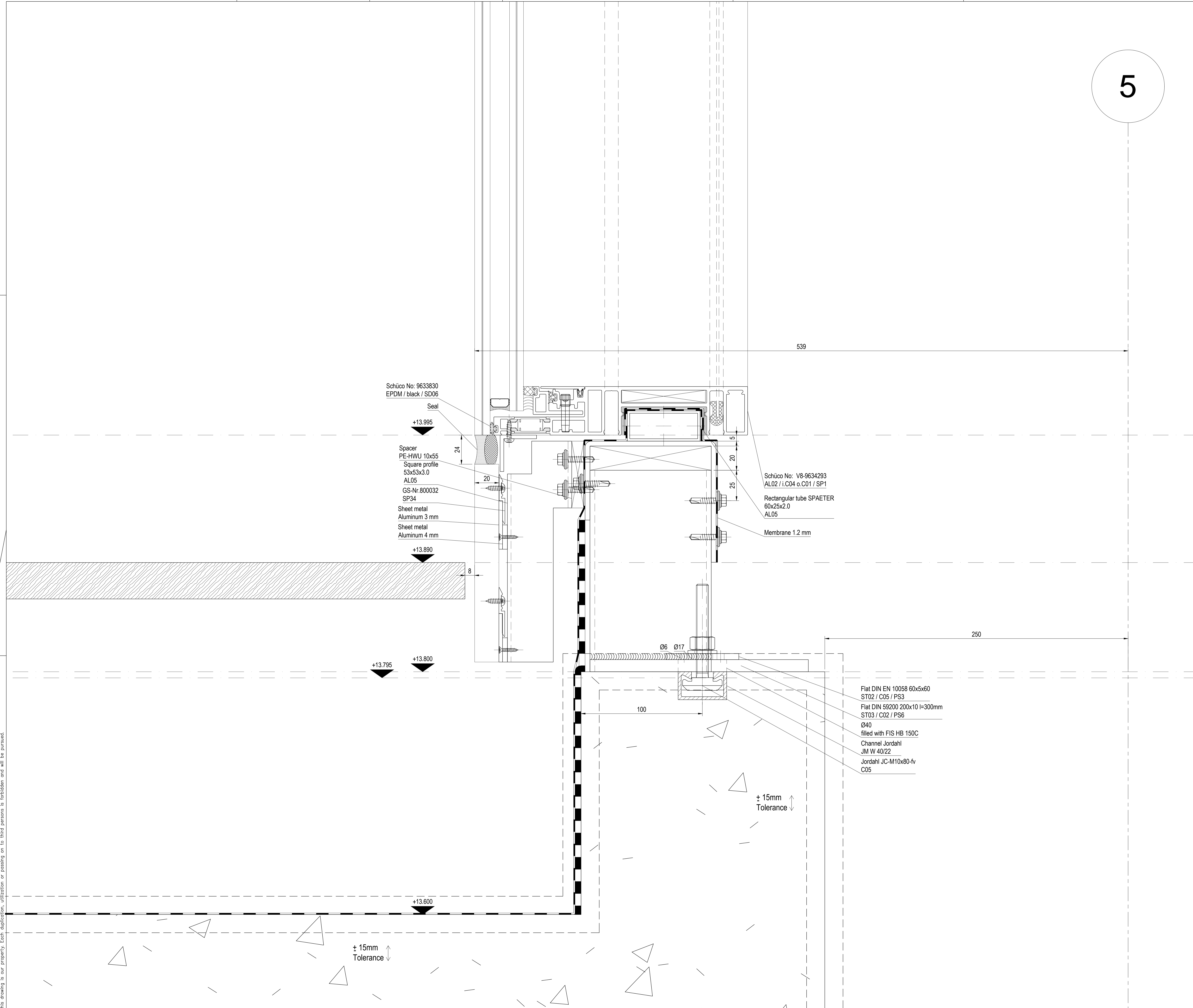
ELEVATION VIEW  
1:25

FIFTH FLOOR PLAN VIEW  
1:25

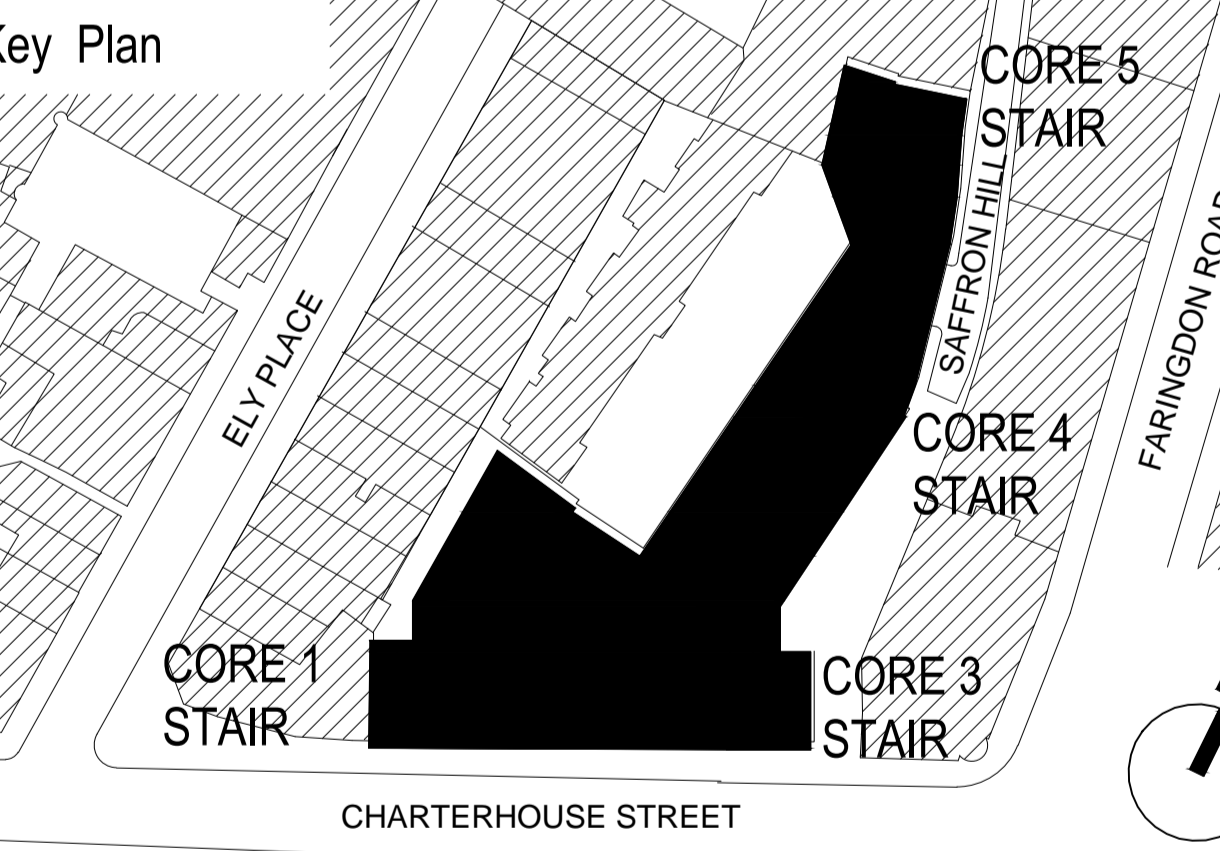
TYPICAL PLAN VIEW  
1:25

3D VIEW

5



**EWS 08 - SECTION DETAIL, BASE OF STAIR 4, GLASS TO COURTYARD PAVING**



APPROVAL  
DATE:

Rev	Revisions	Date	Drawn	Checked
C7				
C6				
C5				
C4				
C3				
C2				
C1				

**SCHNEIDER**

**Schneider GB Ltd**  
Downstream Offices  
Butlers Wharf West  
38 Shad Thames  
London, SE1 2YD

**WINDOWS**  
**FACADES**  
**CURTAIN WALLING**

t +44 (0) 20 7401 6383  
www.schneider-facades.co.uk

JOB NO.: K30152  
CONTRACT: 17 Charterhouse Street

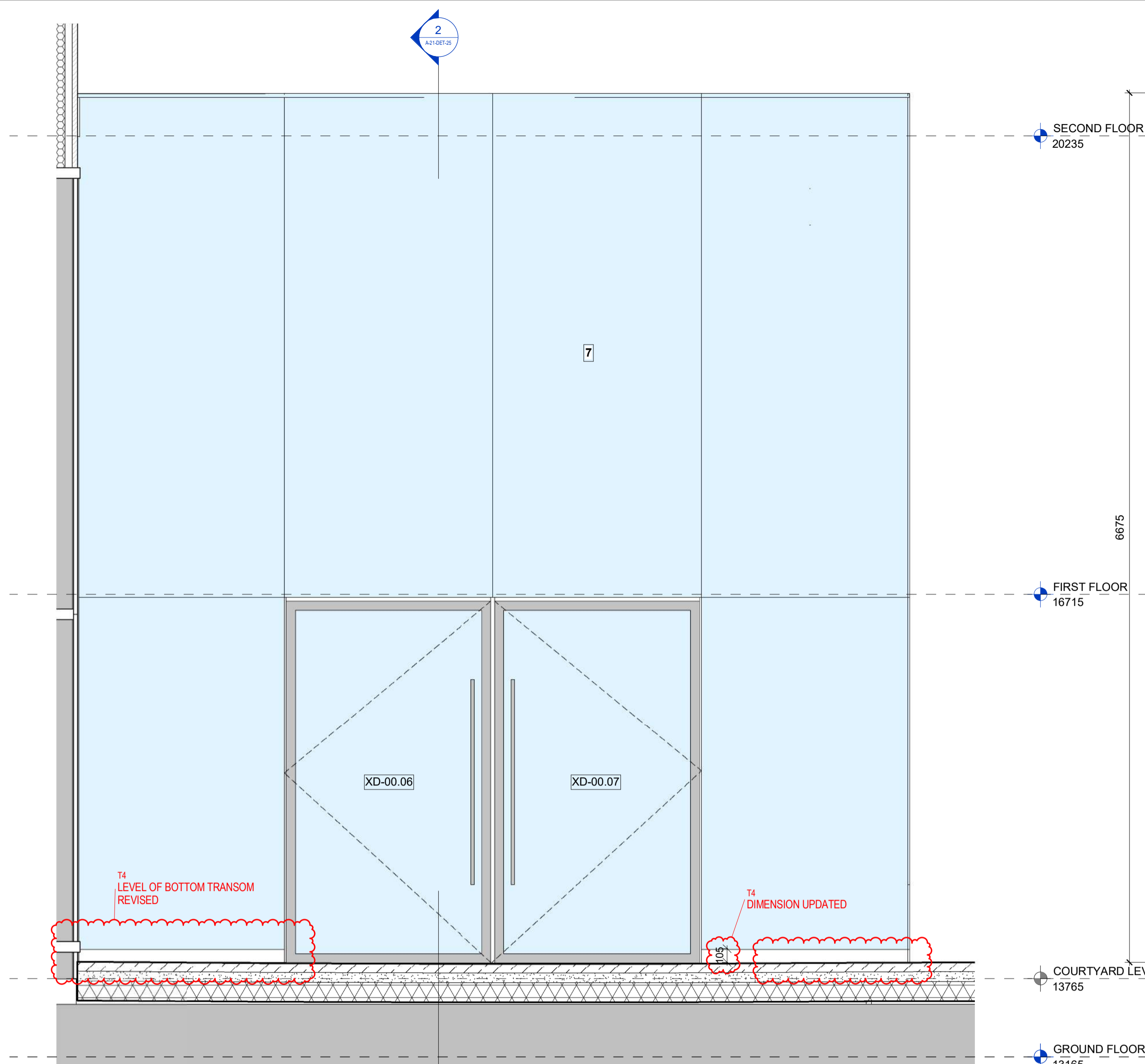
ARCHITECTS: MCM Architecture Limited

DRAWING TITLE: Mainwork drawings  
vertical section  
parapet panel

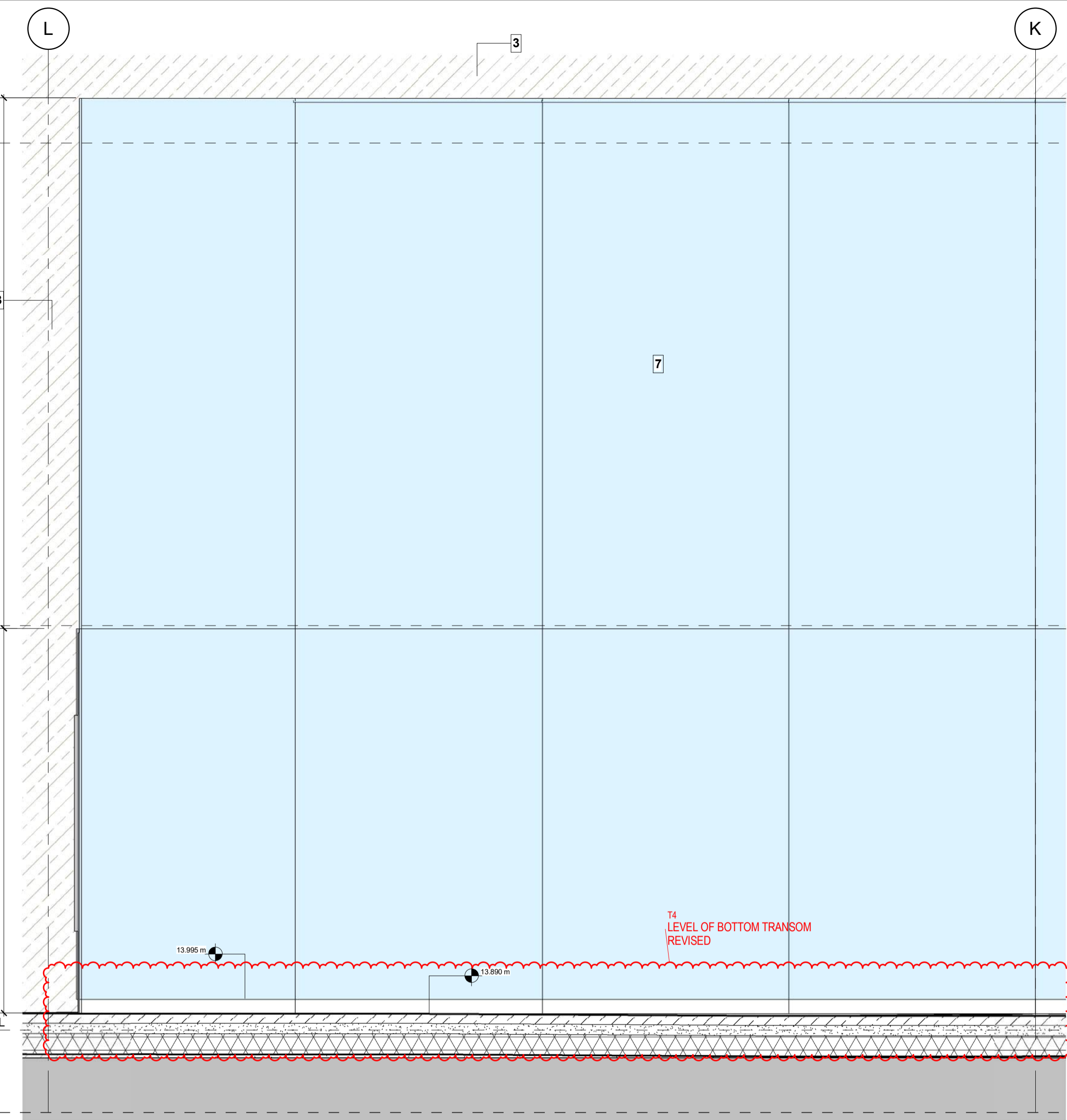
Scale: A3: 1:3  
Date: 06-SEP-18  
Checked-by: M. Martin  
Drawn by: E. Perez  
Revision: 00

Drawing-Nr.: P2020-SGB-MW-08-D-02-012

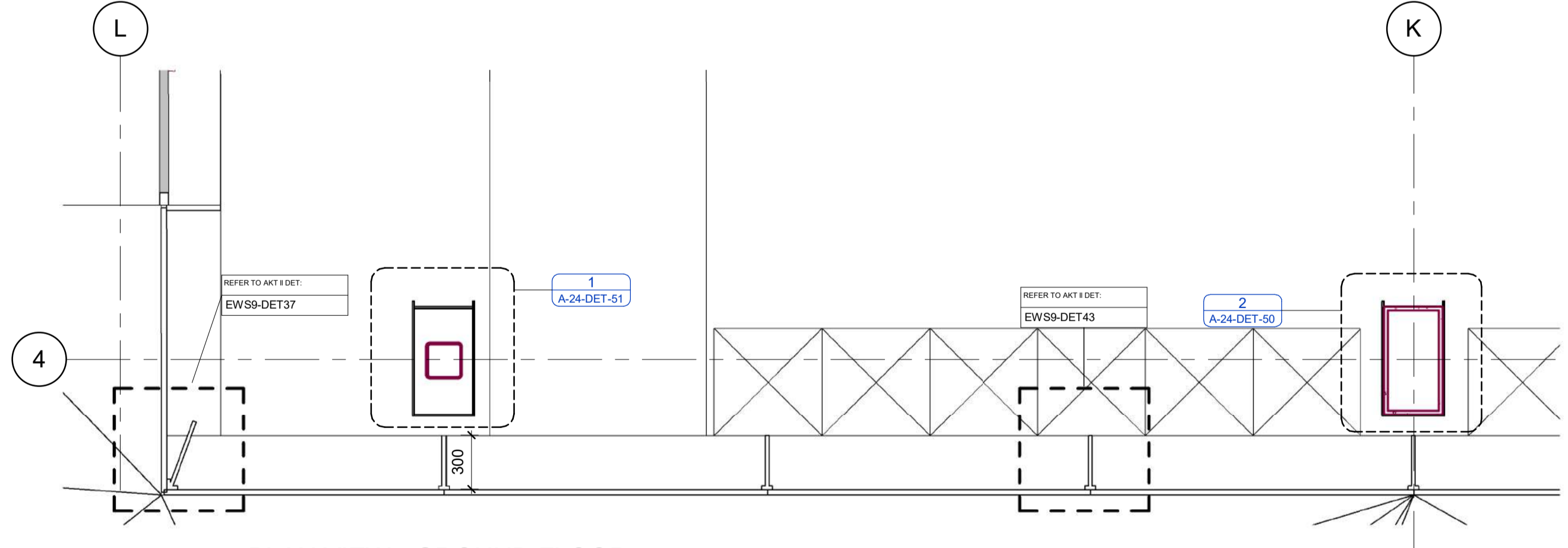
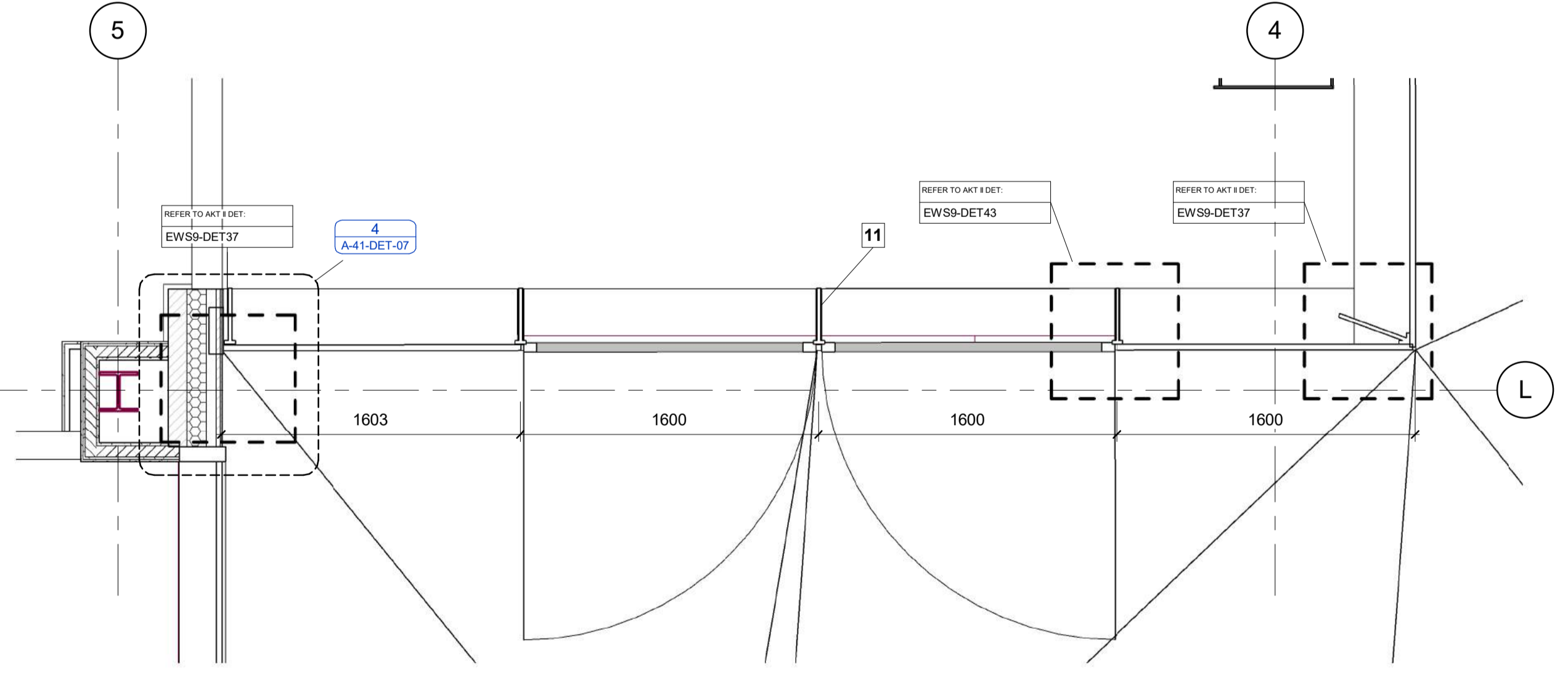
This drawing is our property. Each duplication, utilization or passing on to third persons is forbidden and will be pursued.



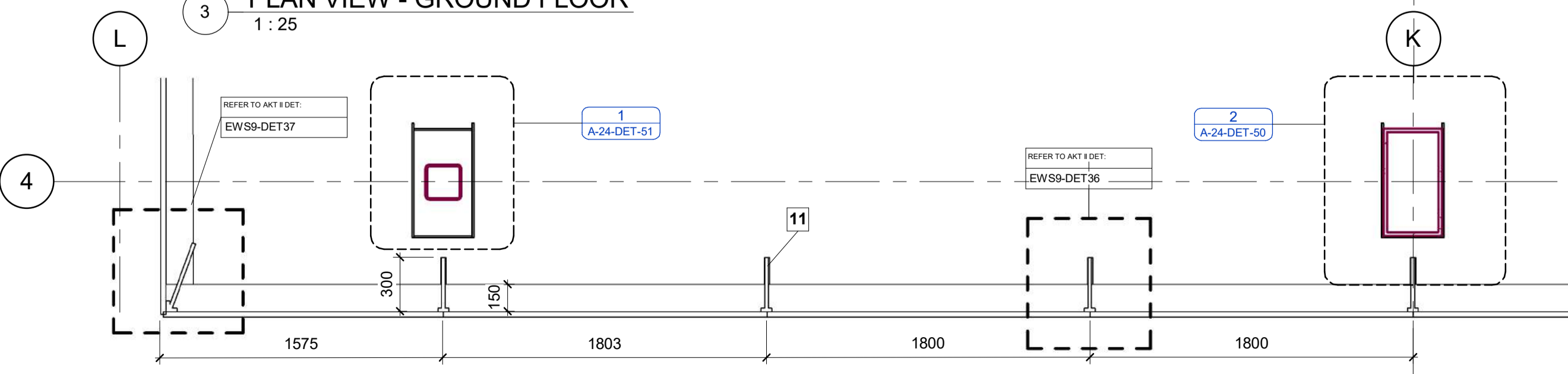
2 ELEVATION VIEW  
1:25



1 ELEVATION VIEW  
1:25



3 PLAN VIEW - GROUND FLOOR  
1:25



4 PLAN VIEW - FIRST FLOOR  
1:25

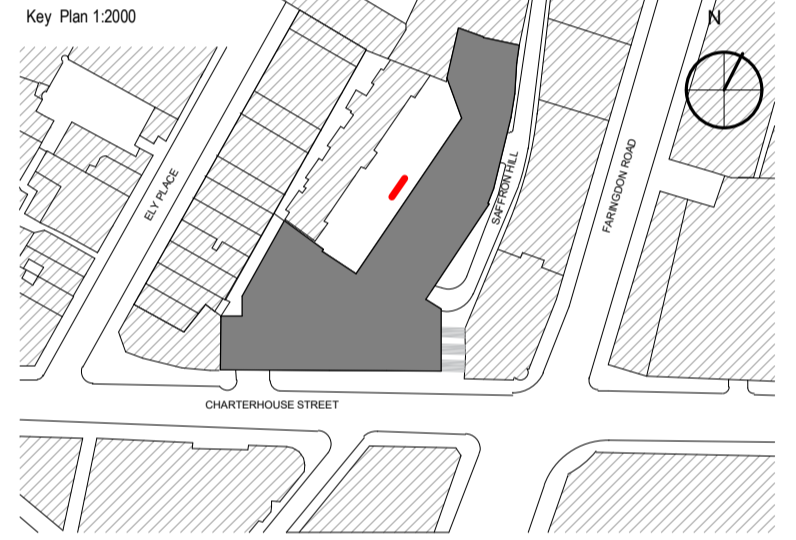
**EWS09 - CLADDING TO GLASS PAVILION, COURTYARD**

**SYMBOLS KEY**

- BY STRUCTURAL ENGINEER
- WATERPROOFING LAYER
- VAPOUR BARRIER
- BOUNDARY LINE

NOTES:  
ALL CONCRETE UPSTANDS TBC BY STRUCTURAL ENGINEER  
READ IN CONJUNCTION WITH AKT DWGS AKTE-17CH-CW01 TO CW08

1	Portland Basebed Stone- AKT/H51
2	Portland Bowers Roach Stone- AKT/H51
3	Ceramic Stone- AKT/H92
4	Insulated Render- AKT/M21
5	Anodised aluminium unisited curtain walling mullion/transom- AKT/A and H11
6	Anodised aluminium stick system curtain walling mullion- AKT/A and H11
7	Sealed double glazed laminated vision glass unit with Low-E glass- AKT/L40
8	Sealed double glazed laminated vision glass unit with Low-E glass and translucent stone veneer- AKT/L40
9	Anodised aluminium vertical and horizontal fin sun shading- AKT/Z11
10	Anodised aluminium framed glazed doors with low-E double glazed units- AKT/Z11, L10, L20
11	Mild steel curtain walling mullion- AKT/H11
12	Polyester powder coated aluminium louvre panel - MCM/L19 and Z31
13	Anodised aluminium louvre panel- AKT/Z33
14	Canilevered glass balustrade - AKT/A, General requirements, 3.14.1
15	Specialist steel garage door with Portland stone facing - MCM/L20/481A
16	Specialist steel door with Portland stone facing MCM/L20/463B
18	White pebble Ballast - MCM/J31/130B
19	European granite pavers - MCM/J31/371A
20	Raised access Floor -
21	Concrete pavers to plant room enclosures - MCM/J31/370A
22	Insulated stone soffit panel- AKT/H52
23	Thermal Insulation- AKT/Section 11.7
24	Light Steel Framing MCM/G13/124
26	Existing Portland Stone (retained) MCM/C40/111
27	Plasterboard - MCM/K10
29	Steel plate - AKT/Z11, Z12 and Z20
30	Blockwork MCM/F10/350A
31	Granite plinth - AKT/H51
32	Anodised aluminium - AKT/Z33
34	Entrance matting - MCM/N10/290
35	Ceramic print to privacy frit- AKT/L40
36	Cementitious board - MCM/J31/130
37	Replacement window - AKT/L10



0.5 1 2m

DO NOT SCALE ANY DIMENSIONS OFF THIS DRAWING. ANY DISCREPANCIES BETWEEN THIS DRAWING AND OTHER INFORMATION ARE TO BE REFERENCED TO THIS ARCHITECTURE. LATER REVISIONS TO THIS DRAWING SHALL BE THE RESPONSIBILITY OF THE CONTRACTOR. IN THE EVENT OF DISCREPANCIES BETWEEN THIS DRAWING AND OTHER INFORMATION, THE ARCHITECT'S DRAWINGS SHALL TAKE PRECEDENCE. ANY INFORMATION OUT OF INFORMATION AS NOTED ABOVE MUST BE RECORDED IMMEDIATELY TO MATCH ANY INFORMATION AS NOTED ABOVE. THE DRAWING IS THE PROPERTY OF MCM ARCHITECTURE. ALL DIMENSIONS ARE IN METRES UNLESS OTHERWISE STATED.

COM REGULATION				
HAZARDS	DATE ADDED	DATE MITIGATED	RISK ASSESSMENT DATE	

T4	03.10.17	FACADE SETTING OUT UPDATE	SP
T3	26.04.18	STAGE 4 ENVELOPE UPDATE	DM
T2	29.03.18	STAGE 4 ENVELOPE UPDATE	DM
T1	16.02.18	STAGE 4 ENVELOPE UPDATE	DM
P3	22.01.18	ISSUED FOR INFORMATION	SP
P2	15.12.17	ISSUED FOR INFORMATION	SP
P1	09.10.17	STAGE 3 ISSUE	SP
REV	DATE	PURPOSE OF ISSUE	

CLIENT: AA & DB  
PROJECT: 17 CHARTERHOUSE ST.  
DRAWING: GLASS PAVILION TYP. BAY EWS-09

SCALE: 1:25 @A1  
1:50 @A3

STATUS:  PRELIMINARY  
 TENDER  
 CONSTRUCTION  
 AS BUILT

DRAWN: DM  
CHECKED: SP

DRAWING NO: P17-082 A-21-DET-24 T4

**MCM**  
MCM Architecture Limited  
71 Hopton Street, London SE1 8LR  
T 020 7602 6600  
www.mcm-uk.com

grid transom +16.695

grid transom +13.995

+13.890

+13.770

+13.750

- RAI 150110
- RAI 034052
- RAI 164611
- RAI 168558
- RAI 167371
- Raico-Nr. 012110
- Sealing
- RAI 168400
- RAI 129005
- RAI 168410
- Drill Ø15
- Cheese head screw DIN 6912 M8x25
- Threaded drilling M8x25
- PS-SF-80x15mm transom
- PS-SF-5/70x30mm Steel
- PS-SF-250x15mm mullion
- PS-SF-60x20mm transom
- Threaded drilling M8
- Cheese head screw DIN 6912 M8x12
- Drill fine M8
- PS-SF-60x20mm mullion

- RAI 150110
- RAI 034052
- RAI 164611
- RAI 168558
- PA-AW- 20x20x2 mm Aluminum
- Sealing
- Tapping screw ISO 7050 ST3.5x25-C-H
- Tapping screw ISO 7050 ST3.5x19-C-H
- Spacer PVC 41.8x30mm
- V73008 Reisser RP-K-5.5x38 E16
- PA-AF- 5/30 mm Aluminum
- Membrane 1/136 mm
- Insulation FLP 035/A1, 50mm
- BA-BK- 3/244 mm Aluminum
- RAI 167371
- RAI 168400
- Raico-Nr. 012110
- RAI 129005
- RAI 168410
- Threaded drilling M8
- Cheese head screw DIN 6912 M8x12
- Drill Ø15
- PS-SF-250x15mm transom
- Threaded drilling M8x29
- PS-SF-10/130 mm Steel
- Cheese head screw DIN 6912 M8x25
- PS-SF-60x20mm transom
- Threaded drilling M6x13
- Drill fine M6
- Cheese head screw DIN 6912 M6x12
- PS-SF-60x20mm mullion
- BS-BK- Sheet metal Steel 2/200 mm
- PS-SF-250x15mm mullion
- Threaded drilling M6x11
- Drill fine M6
- Plain washer ISO 7089 M6
- Cheese head screw DIN 6912 M6x12
- PA-AW- 20x40x3 mm Wall by others
- PS-SF-150x15mm mullion (250x15 trimmed)
- Drill Ø17
- PS-SF- 5/60 mm Steel
- Drill Ø40 filled with FIS HB 150C
- PS-SF- 20/150 mm Steel
- Slotted hole 17x60
- Anchor Fischer FAZ II 16/60 A4
- packers 1-2mm
- Zebra Pias 4,8x16 W-205 7 Steel galvanized
- BS-BK- 2/116 mm Steel
- Wall 10mm
- FO-EP- Membrane EPDM 5/355 mm
- Spacer PVC 60x150
- B01628 Nail anchor N-Z-A2 Fisch50372

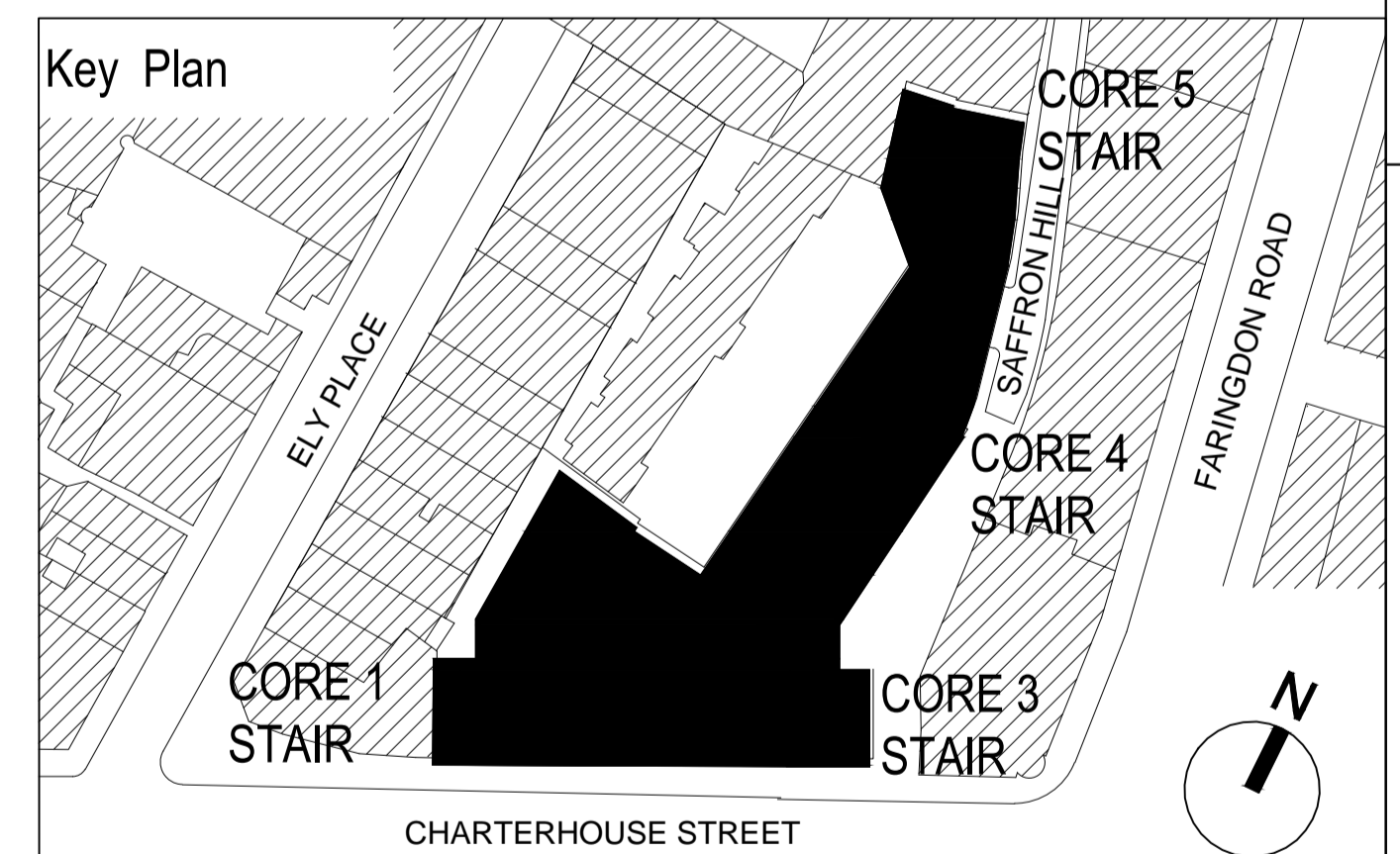
6276

405

4

4

### EWS 09 - SECTION DETAIL, BASE OF GLASS PAVILION CLADDING TO COURTYARD PAVING, COURTYARD



APPROVAL DATE:

Rev	Revisions	Date	Drawn	Checked
C7				
C6				
C5				
C4				
C3				
C2				
C1				

**SCHNEIDER** **Schneider GB Ltd**  
 Downstream Offices  
 Butlers Wharf West  
 38 Shad Thames  
 London, SE1 2YD  
 t +44 (0) 20 7401 6383  
 www.schneider-facades.co.uk

**WINDOWS**  
**FACADES**  
**CURTAIN WALLING**

JOB NO.: K30152  
 CONTRACT: 17 Charterhouse Street  
 ARCHITECTS: MCM Architecture Limited  
 DRAWING TITLE: principle detail EWS09  
 vertical section  
 bottom point L00

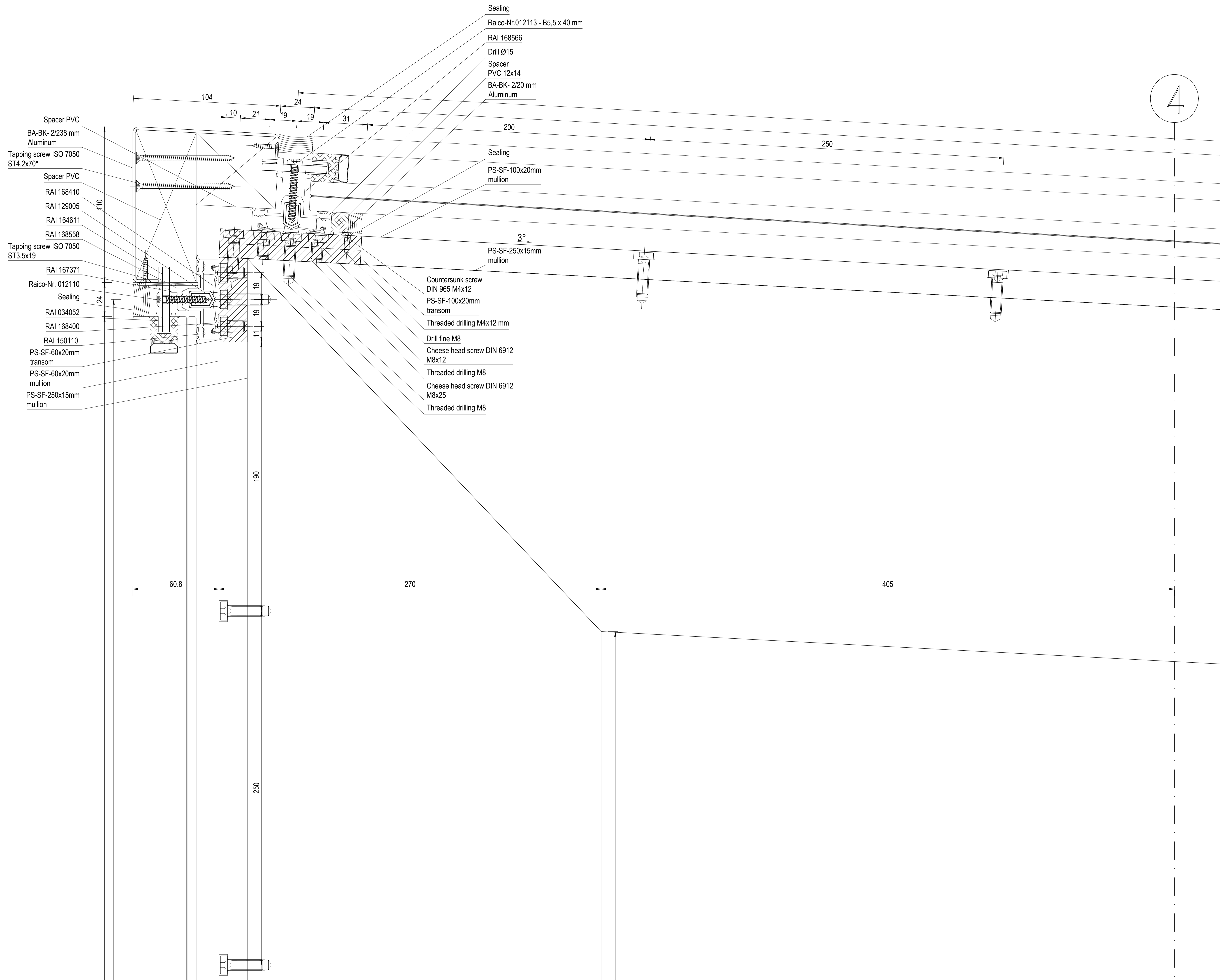
Date: 15-AUG-2018  
 Checked-by: U. Drabe  
 Drawn by: A. Westhof  
 Revision: 00

This drawing is our property. Each duplication, utilization or passing on to third persons is forbidden and will be pursued.

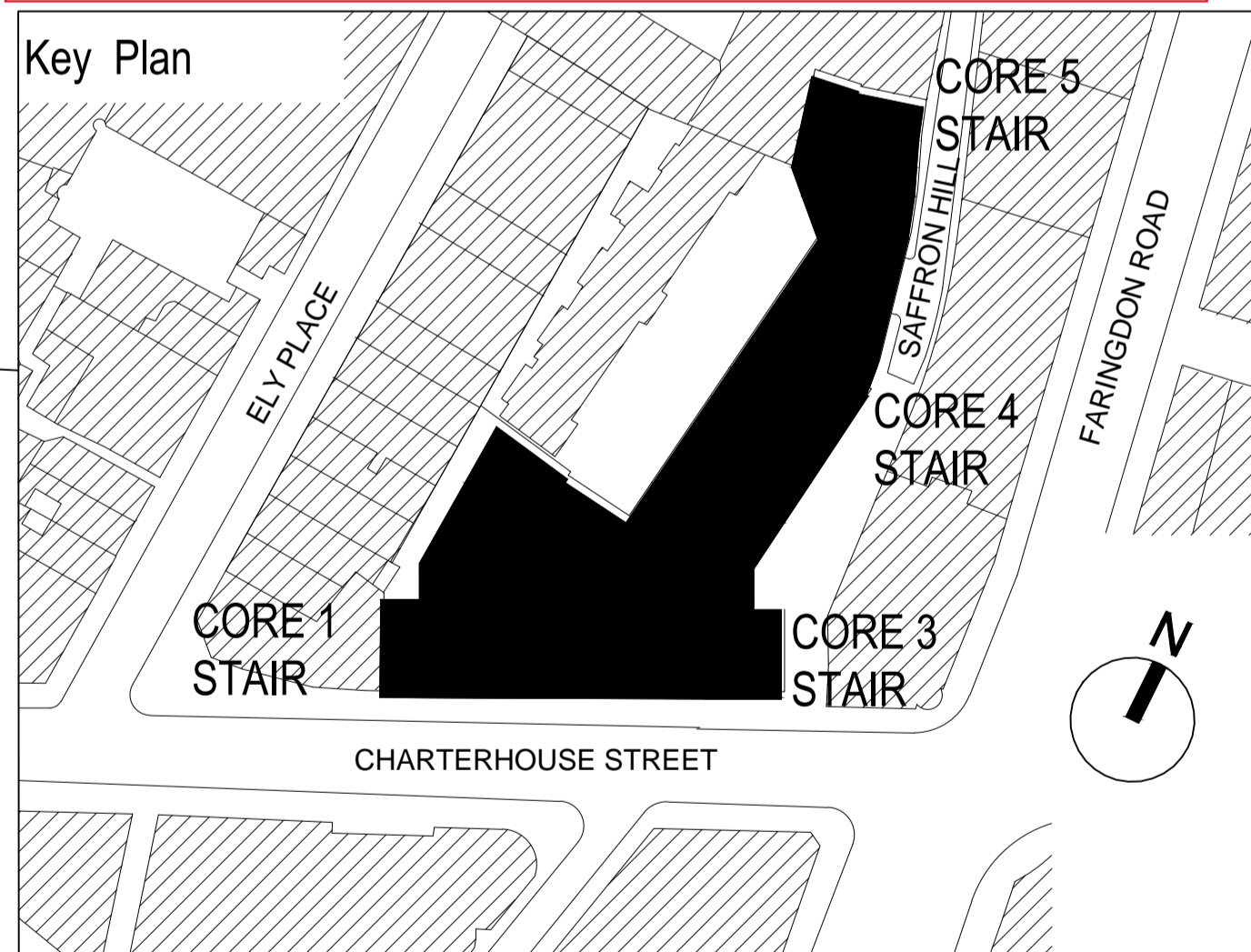


4

+20.637  
 top of steel construction +20.565  
 +20.545  
 grid transom +20.515  
 second floor +20.235



**EWS 09 - SECTION DETAIL, TOP OF GLASS PAVILION CLADDING TO GLASS ROOF, COURTYARD**



**APPROVAL**  
 DATE:

C7				
C6				
C5				
C4				
C3				
C2				
C1				

<p><b>SCHNEIDER</b></p>	<p><b>Schneider GB Ltd</b>          Downstream Offices          Butlers Wharf West          38 Shad Thames          London, SE1 2YD          t +44 (0) 20 7401 6383          www.schneider-facades.co.uk</p>	<p><b>WINDOWS</b>  <b>FACADES</b>  <b>CURTAIN WALLING</b></p>
	<p>JOB NO.: K30152          CONTRACT: 17 Charterhouse Street          ARCHITECTS: MCM Architecture Limited          DRAWING TITLE: principle detail EWS09          vertical section          top point L02          -          Drawing-Nr.: P2020-SGB-PD-09-D-XX-002</p>	<p>           Scale: A3, 1:1          Date: 15-AUG-2018          Checked-by: U. Drabe          Drawn by: A. Westhof          Revision: 00</p>

This drawing is our property. Each duplication, utilization or passing on to third persons is forbidden and will be pursued.

4

405

100

130

20

20

rear edge of flooring

250

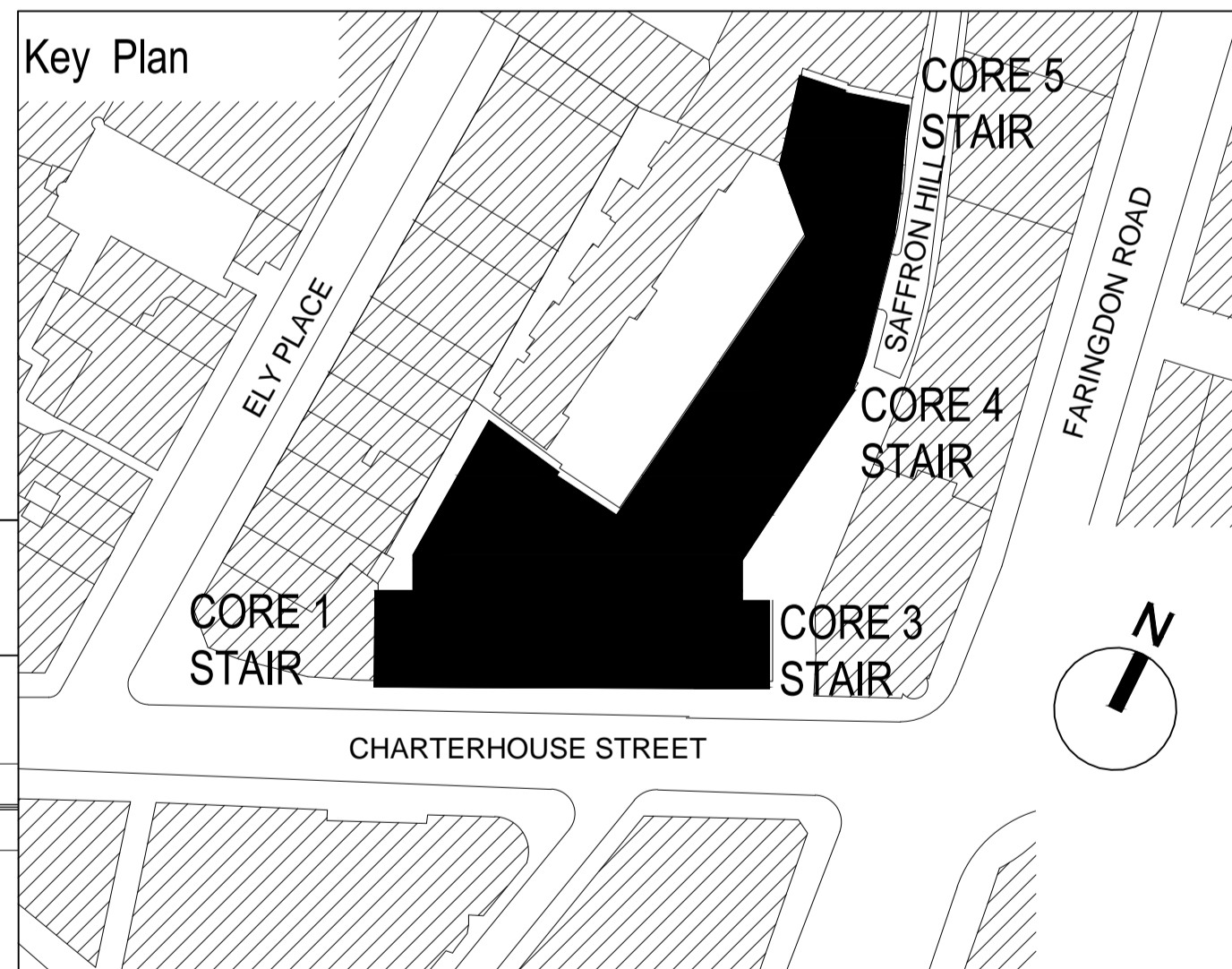
28.5 11 19 19 11 28.5

250

- PS-SF-250x15mm mullion
- PS-SF-40x130mm steel
- PS-SF-250x15mm transom
- Threaded drilling M8
- Cheese head screw DIN 6912 M8x25
- Threaded drilling M8
- Cheese head screw DIN 6912 M8x12
- RAI 168410
- PS-SF-60x20mm mullion
- Drill Ø15
- PS-SF-60x20mm transom
- RAI 129005
- Raico-Nr. 012110
- RAI 168558
- RAI 034052
- RAI 164611
- Sealing

- Slotted hole 9x13
- Slotted hole 15x19
- RAI 168400
- RAI 150105

**EWS 09 - PLAN DETAIL, PAVILION CLADDING GLASS TO GLASS JOINT, COURTYARD**

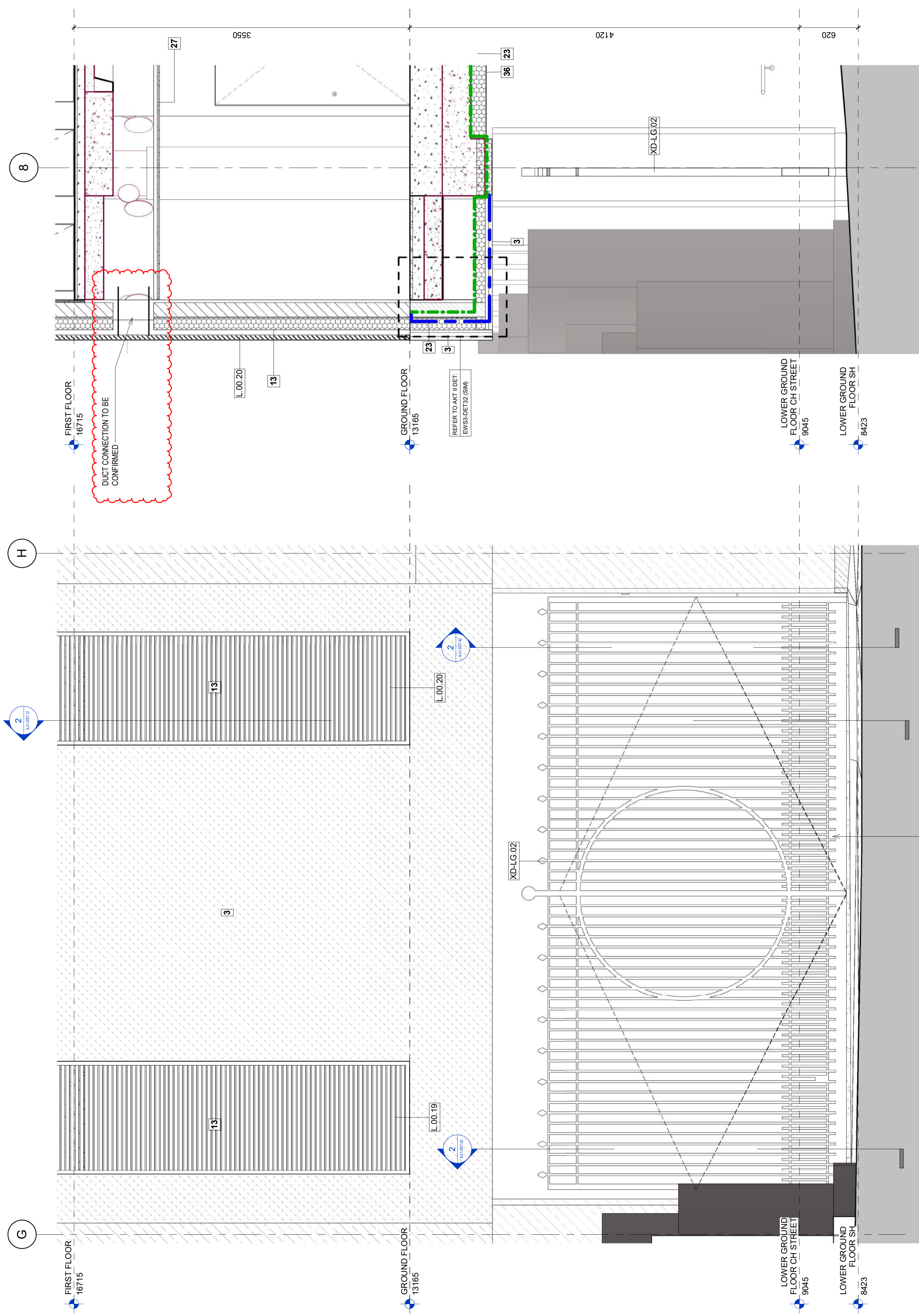


**APPROVAL**  
DATE:

C7				
C6				
C5				
C4				
C3				
C2				
C1				

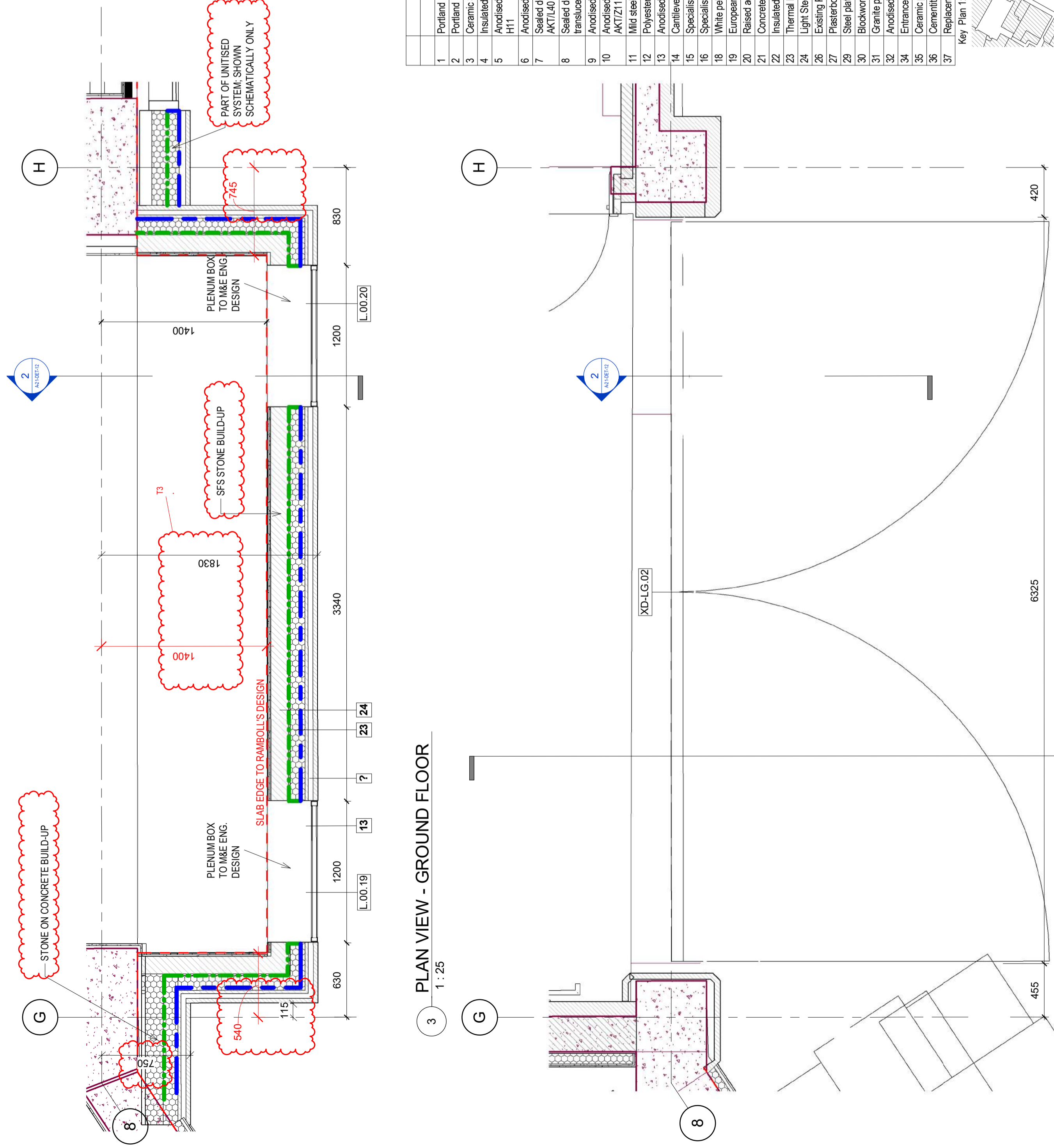
	<b>Schneider GB Ltd</b> Downstream Offices Butlers Wharf West 38 Shad Thames London, SE1 2YD t +44 (0) 20 7401 6383 www.schneider-facades.co.uk	<b>WINDOWS</b> <b>FACADES</b> <b>CURTAIN WALLING</b>
	JOB NO.: K30152 CONTRACT: 17 Charterhouse Street ARCHITECTS: MCM Architecture Limited DRAWING TITLE: principle detail EWS09 horizontal section L00 Checked-by: U. Drabe Drawn by: A. Westhof Drawing-Nr.: P2020-SGB-PD-09-D-XX-021 Revision: 00	 Scale: A3, 1:1 Date: 15-AUG-2018 Drawn by: A. Westhof Revision: 00

This drawing is our property. Each duplication, utilization or passing on to third persons is forbidden and will be pursued.



5 Elevation View  
1:25

**EWS 05 - SECTION DETAIL, TYPICAL STONE CLADDING, TYPICAL FLOOR, SAFFRON HILL**



3 Plan View - Ground Floor  
1:25

4 Plan View - Lower Ground Floor  
1:25

1	Portland Beashed Stone - AKTH51
2	Portland Bovers Road Stone - AKTH51
3	Ceramic Stone - AKTH62
4	Insulated Render - AKTM21
5	Anodised aluminium uPVC curtain walling mullion/transom - AKT/A and H11
6	Anodised aluminium stick system walling mullion - AKT/A and H11 and H11
7	Sealed double glazed laminated vision glass unit with LOW-E glass - AKTL40
8	Sealed double glazed laminated vision glass unit with LOW-E glass and translucent stone veneer - AKTL40
9	Anodised aluminium vertical and horizontal fin sun shading - AKTZ11
10	Anodised aluminium framed glazed doors with low-E double glazed units - AKTZ11, L10, L20
11	MIG steel curtain walling mullion - AKTH11
12	Polyester powder coated aluminium boure panel - MCM/L19 and Z31
13	Anodised aluminium boure panel - AKTZ23
14	Centilevered glass balustrade - AKT/A, General requirements, 3.14.1
15	Specialist steel garage door with Portland stone facing - MCM/L20/461A
16	Specialist steel door with Portland stone facing MCM/L20/483B
18	White pebble Ballast - MCM/J31/30B
19	European granite pavers - MCM/J31/371A
20	Raised access floor -
21	Concrete pavers to plant room enclosures - MCM/J31/370A
22	Insulated stone soffit panel - AKTH52
23	Thermal insulation - AKT Section 11.7
24	Light Steel Framing MCM/G13/24
26	Existing Portland Stone (retained) MCM/C40/111
27	Plasterboard - MCM/KR10
29	Steel plate - AKTZ11, Z12 and Z20
30	Blockwork MCM/F03/50A
31	Granite plinth - AKTH51
32	Anodised aluminium - AKTZ23
34	Entrance matting - MCM/M10/280
35	Ceramic print to privacy fin - AKTL40
36	Cementitious board - MCM/J31/30
37	Replacement window - AKTL10

**SYMBOLS KEY**

- BY STRUCTURAL ENGINEER
- WATERPROOFING LAYER
- VAPOUR BARRIER
- BOUNDARY LINE

**NOTES:**  
ALL CONCRETE UPSTANDS TBC BY STRUCTURAL ENGINEER  
READ IN CONJUNCTION WITH AKT DWGS AKYE-17CH-001 TO 0028

**CDM REGULATION**

HAZARDS	DATE ADDED	DATE MITIGATED	RISK MITIGATED

**DO NOT SCALE ANY DIMENSIONS OFF THIS DRAWING. ANY DIMENSIONS BETWEEN BRACKETS ARE DIMENSIONS OF THE EXISTING BUILDING OR COMPLETED WORK. WHERE THE DRAWING RELATES TO AN EXISTING BUILDING OR COMPLETED WORK, THE DIMENSIONS SHOWN ARE THE DIMENSIONS OF THE EXISTING BUILDING OR COMPLETED WORK. DIMENSIONS IN BRACKETS ARE DIMENSIONS OF THE EXISTING BUILDING OR COMPLETED WORK. DIMENSIONS IN SQUARE BRACKETS ARE DIMENSIONS OF THE EXISTING BUILDING OR COMPLETED WORK. DIMENSIONS IN CIRCLES ARE DIMENSIONS OF THE EXISTING BUILDING OR COMPLETED WORK. DIMENSIONS IN TRIANGLES ARE DIMENSIONS OF THE EXISTING BUILDING OR COMPLETED WORK. DIMENSIONS IN DIAMONDS ARE DIMENSIONS OF THE EXISTING BUILDING OR COMPLETED WORK. DIMENSIONS IN PARALLELOGRAMS ARE DIMENSIONS OF THE EXISTING BUILDING OR COMPLETED WORK. DIMENSIONS IN TRAPEZOIDALS ARE DIMENSIONS OF THE EXISTING BUILDING OR COMPLETED WORK. DIMENSIONS IN OTHER SHAPES ARE DIMENSIONS OF THE EXISTING BUILDING OR COMPLETED WORK. DIMENSIONS IN UNITS ARE DIMENSIONS OF THE EXISTING BUILDING OR COMPLETED WORK. DIMENSIONS IN METRES UNLESS OTHERWISE STATED.**

**REV** | **DATE** | **PURPOSE OF ISSUE**

T3	17.09.18	FAÇADE UPDATE - SETTING OUT	SP
T2	27.03.18	STAGE 4 ENVELOPE UPDATE	DM
T1	16.02.18	STAGE 4 ENVELOPE UPDATE	DM
P3	22.01.18	ISSUED FOR INFORMATION	SP
P2	15.12.17	ISSUED FOR INFORMATION	SP
P1	09.10.17	STAGE 3 ISSUE	SP

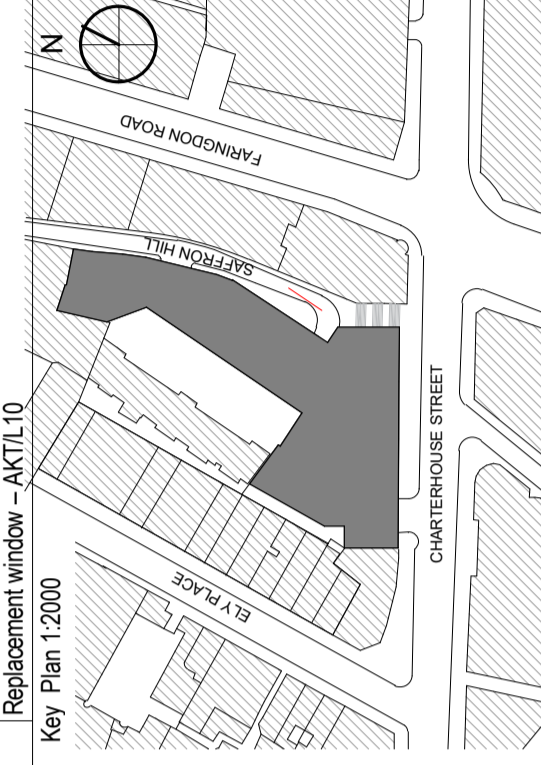
**CLIENT** AA & DB  
**PROJECT** 17 CHARTERHOUSE ST.  
**DRAWING** SAFFRON HILL CYCLE BAY/CORE 3  
**EPSW-07**

**SCALE** 1:25 @A1  
**DRAWN** DM  
**CHECKED** SP

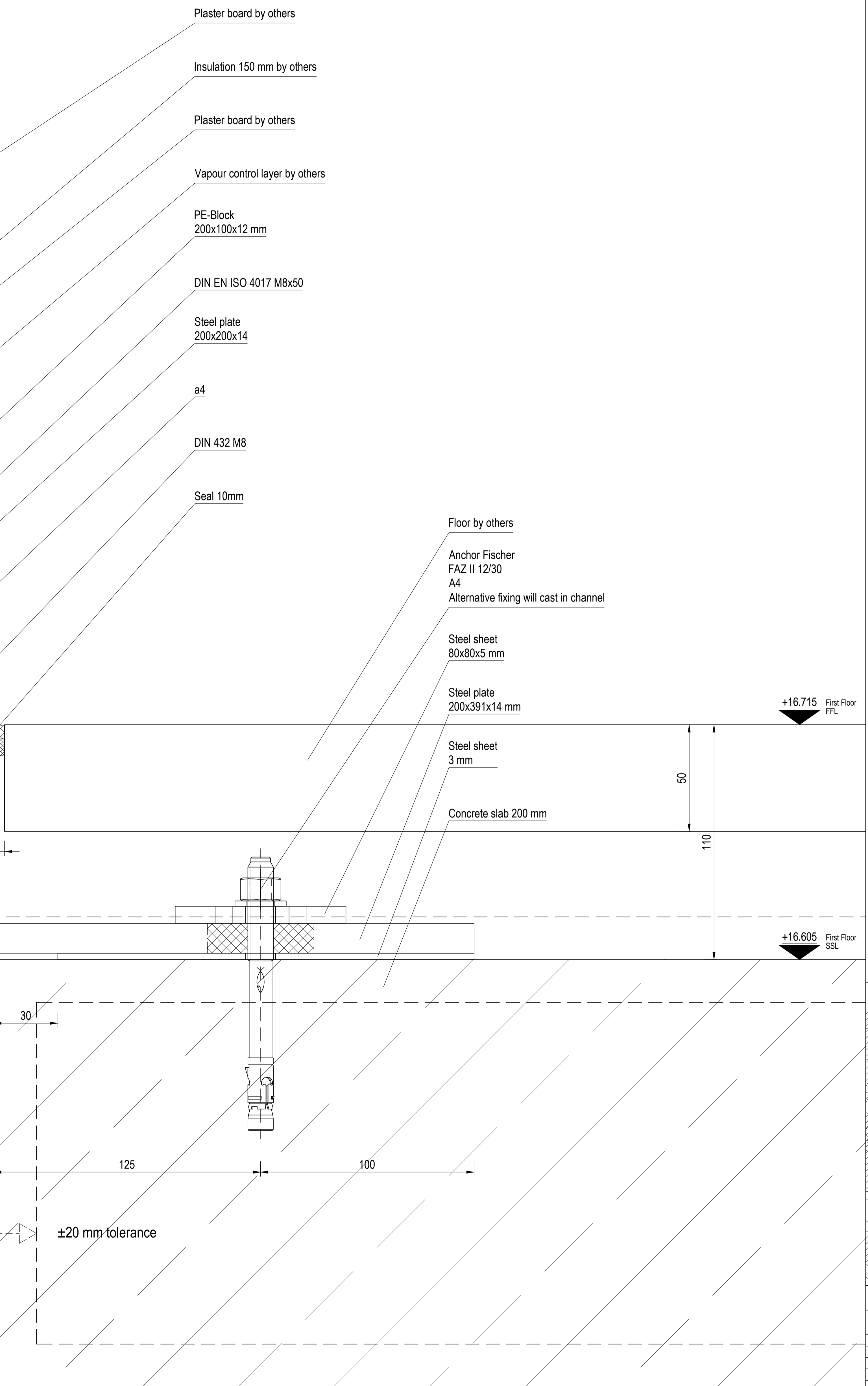
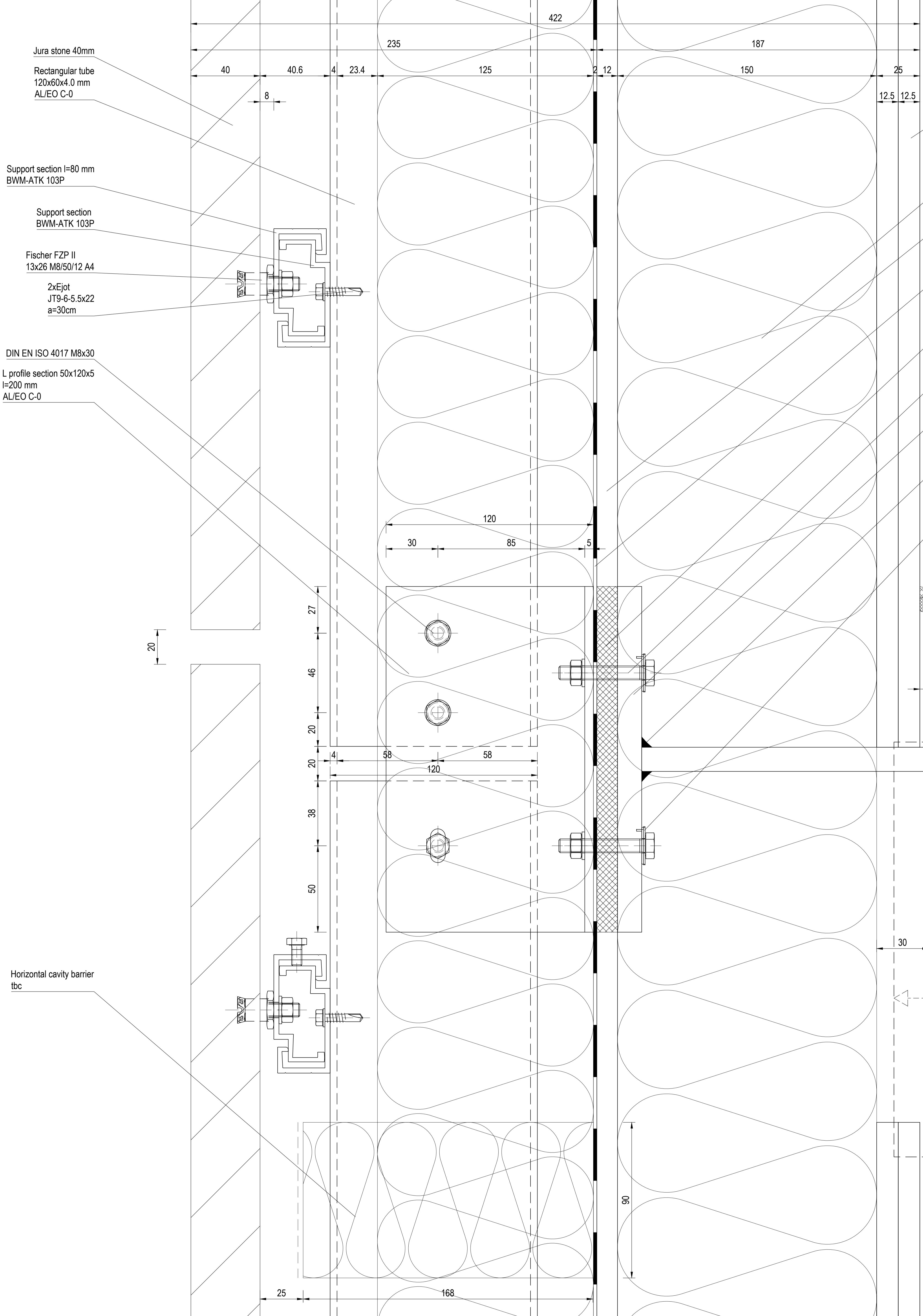
**STATUS**  
 PRELIMINARY  
 TENDER  
 CONSTRUCTION  
 AS BUILT

**DRAWING NO.** P17-082  
**REV** A-21-DET-12  
**NO.** T3

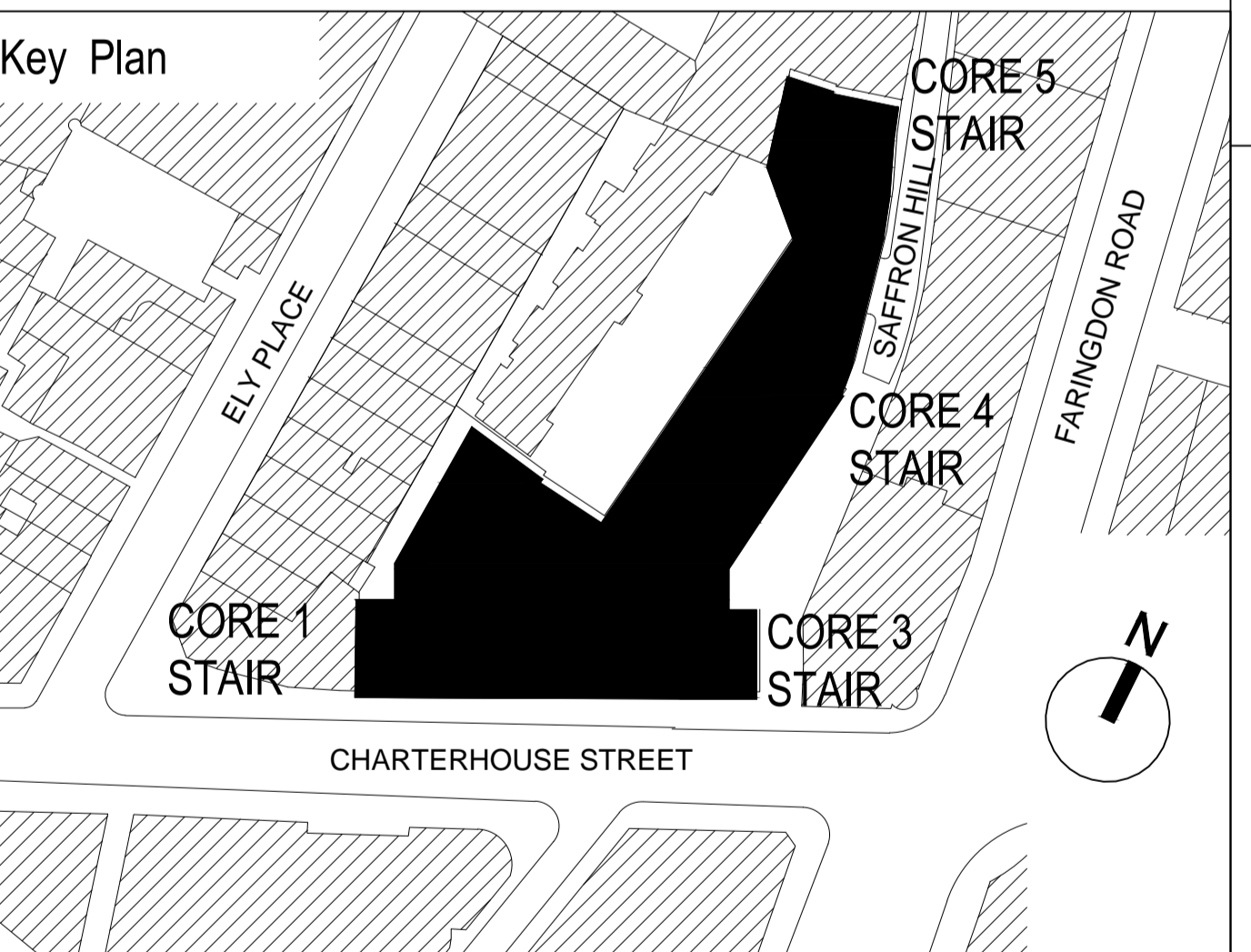
**MCM**  
MCM Architects Limited  
71 Hopton Street London SE1 8LR  
T 020 7692 0800  
www.mcm-uk.com



This drawing is our property. Each duplication, utilization or passing on to third persons is forbidden and will be pursued.



**EWS 05 - SECTION DETAIL, TYPICAL STONE CLADDING, TYPICAL FLOOR, SAFFRON HILL**

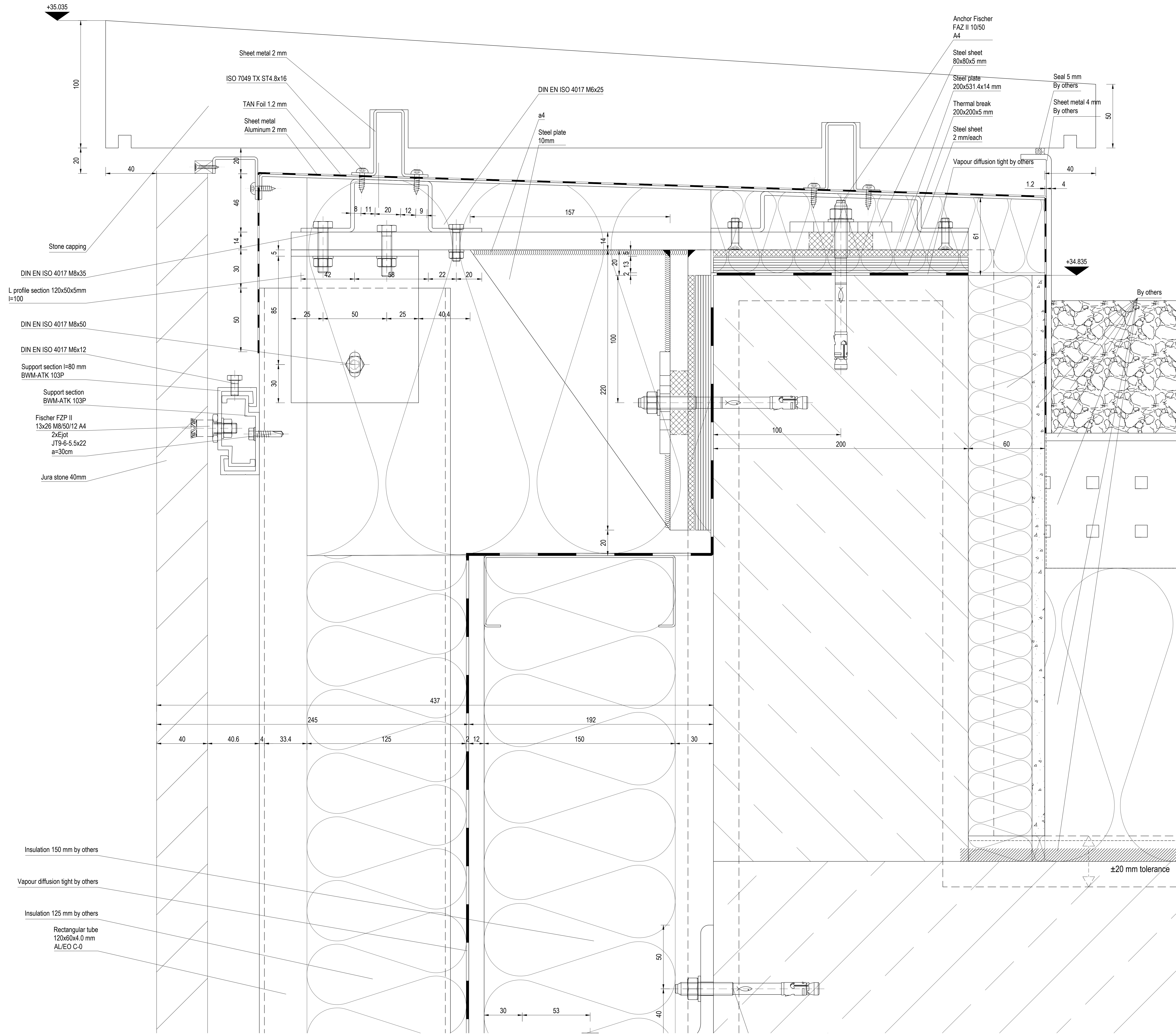


APPROVAL

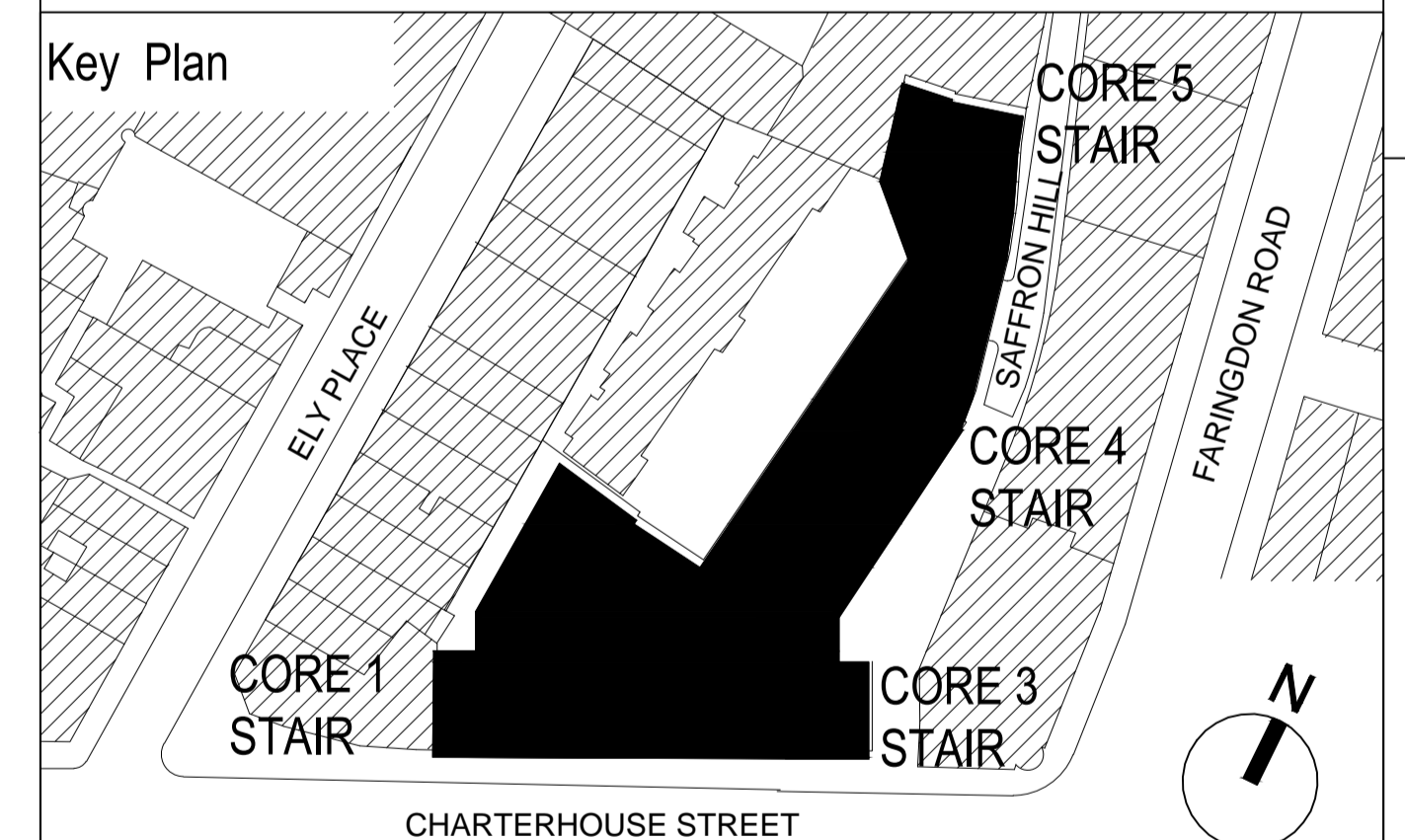
DATE:

C7			
C6			
C5			
C4			
C3			
C2			
C1			

<b>SCHNEIDER</b> Downstream Offices Butlers Wharf West 38 Shad Thames London, SE1 2YD t +44 (0) 20 7401 6383 www.schneider-facades.co.uk	<b>SCHNEIDER GB Ltd</b> JOB NO.: K30152 CONTRACT: 17 Charterhouse Street ARCHITECTS: MCM Architecture Limited DRAWING TITLE: Principle detail Stone cladding on the SFS-Wall (EWS-05) Vertical section Drawing-Nr.: P2020_SGB_PD_20_D_XX_001	<b>WINDOWS</b> <b>FACADES</b> <b>CURTAIN WALLING</b> Timber-Alu Alu Timber Scale: A3, 1:3 A0, 1:1 Date: 07-SEP-18 Checked-by: F.Schurig Drawn by: A. Figueroa Revision: 00
	Rev Revisions Date Drawn Checked	



**EWS 05 - SECTION DETAIL, STONE PARAPET DETAIL FIFTH FLOOR, SAFFRON HILL**



**APPROVAL**  
DATE:

Rev	Revisions	Date	Drawn	Checked
C7				
C6				
C5				
C4				
C3				
C2				
C1				

**SCHNEIDER** **Schneider GB Ltd**  
Downstream Offices  
Butlers Wharf West  
38 Shad Thames London, SE1 2YD t +44 (0) 20 7401 6383 www.schneider-facades.co.uk

**WINDOWS**  
**FACADES**  
**CURTAIN WALLING**

JOB NO.: K30152  
CONTRACT: 17 Charterhouse Street  
ARCHITECTS: MCM Architecture Limited  
DRAWING TITLE: Principle detail Stone cladding on the SFS-Wall (EWS-05) Vertical section

Scale: A3, E3  
A0, I, II  
Date: 12-SEP-18  
Checked-by: F. Schurig  
Drawn by: A. Figueroa  
Revision: 00

Drawing-Nr.: P2020\_SGB\_PD\_20\_D\_XX\_006  
Revision: 00

This drawing is our property. Each duplication, utilization, or passing on to third persons is forbidden and will be pursued.

**MCM**