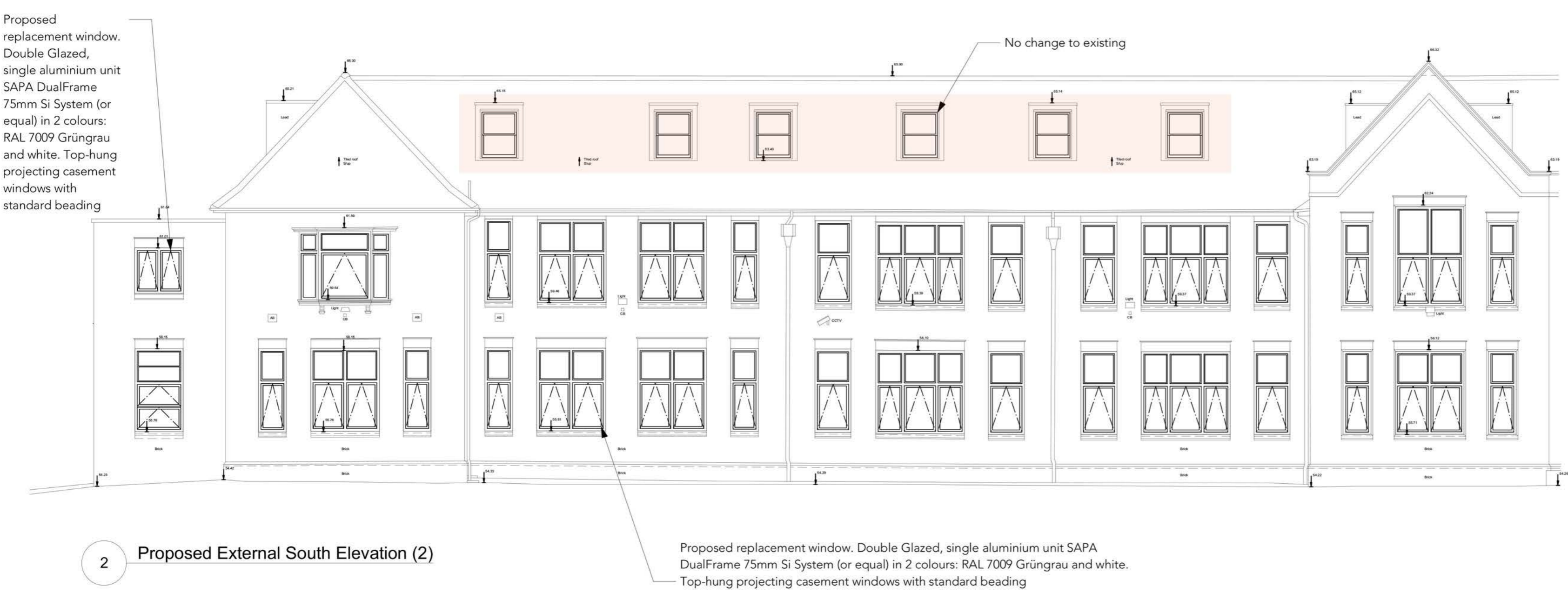


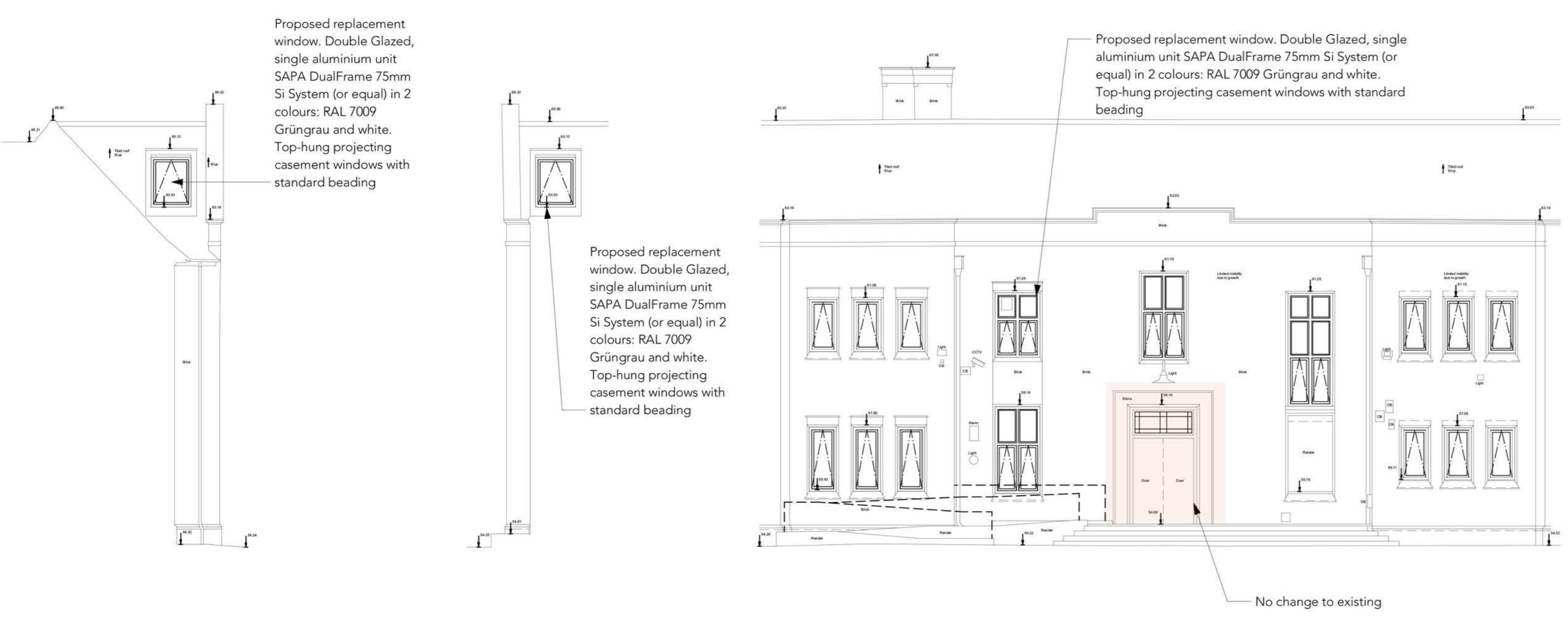
1 Proposed South-West Elevation (1)

Datum 50.000m A.O.D



2 Proposed External South Elevation (2)

Datum 50.000m A.O.D



3 Proposed Ex. South-West Elevation (20)

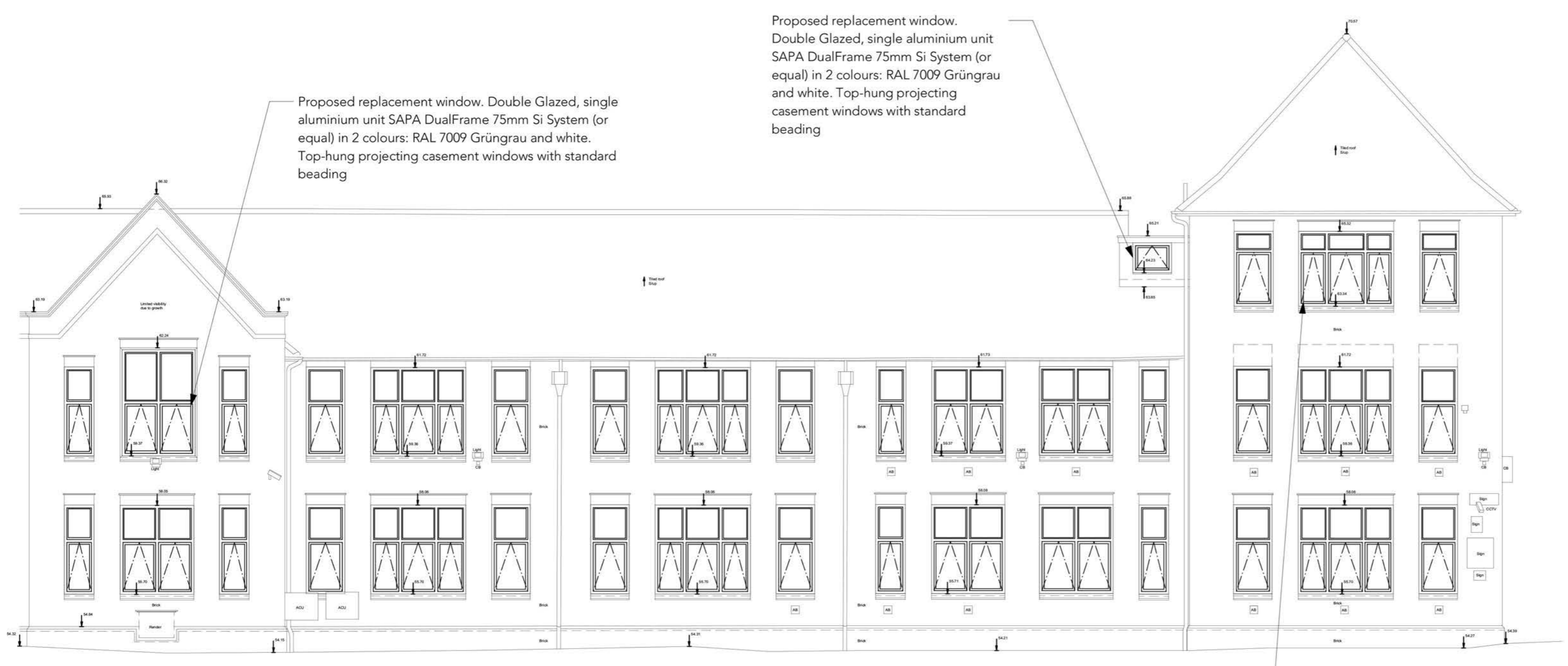
4 Proposed Ex. East Elevation (21)

5 Proposed External South-East Elevation (3)

Datum 50.000m A.O.D

Datum 50.000m A.O.D

Datum 50.000m A.O.D



6 Proposed External East Elevation (4)

Proposed replacement window. Double Glazed, single aluminium unit SAPA DualFrame 75mm Si System (or equal) in 2 colours: RAL 7009 Grüngrau and white. Top-hung projecting casement windows with standard beading

Datum 50.000m A.O.D

REVISION HISTORY		
REV	DATE	DESCRIPTION

Not changed within the proposal

Do not scale from drawings
Confirm all dimensions on site prior to manufacture
Confirm discrepancies with Architect prior to proceeding
Refer to all Engineers' documentation

job no.	notes
598	William Ellis School Highgate
date	dwg. title
27/11/18	Proposed Elevations
Client: William Ellis School	
Scale: 1:100 @ A1 / 1:200 @ A3	
598_P-106	rev. no.
	-

PLANNING

© Sarah Wigglesworth Architects
T +44 (0)20 7607 9200 F +44 (0)20 7607 5800
E mail@swwarch.co.uk W www.swwarch.co.uk